

Contributing to a healthy and green Sutherland Hospital Campus

The NSW Government is investing \$81.5 million to redevelop The Sutherland Hospital Operating Theatre complex with the addition of \$7 million to procure and install an MRI Suite.

To service the current and future health service demand, The Sutherland Hospital Operating Theatre Upgrade Project includes:

- New operating theatres and procedure rooms
- New Surgical Short Stay Unit and Recovery
- New staff amenities and workspaces
- Facilities for admission and discharge
- New Central Sterilising Services Department
- A new MRI Suite.



Artist's impression

Landscaping

The Sutherland Hospital Operating Theatre Upgrade Project will provide an opportunity to significantly revitalise the area. The vision for landscaping design is to achieve inclusivity, connections and safety.

The project's landscape architects and health planners are working together to ensure the landscaping concept delivers:

- Engaging spaces for patients, visitors and staff
- Welcoming resting spaces with intuitive paths and wayfinding

This meeting place will create a sense of community and promote health and wellbeing in busy urban settings.



The Sutherland Hospital Redevelopment Stage 1 view from the west

Materiality

The Sutherland Hospital Operating Theatre Upgrade Project exterior materiality will seamlessly integrate with the existing hospital structure. The design will reference the surrounding context of the site, embracing the site's history and local areas natural features.

FOR MORE INFORMATION:

@ SESLHD-Sutherland-HospitalRedevelopment@health.nsw.gov.au

seslhd.health.nsw.gov.au

Arts on Campus

The delivery of health facilities is greatly enhanced by ensuring the Arts are built-in and becomes a core part of healthcare facilities.

Arts on the grounds of The Sutherland Hospital will reflect the rich local culture recognising Aboriginal history. The Arts and Culture strategy for The Sutherland Hospital Operating Theatre Upgrade Project will showcase connection to country through art, through song and through the creation of meeting places.

Beautiful artistic spaces and landmarks help with wayfinding and ensure indoor and outdoor spaces compliment health service delivery.

Exposure to the Arts has a profoundly beneficial impact on patient wellbeing through its use in health promotion.

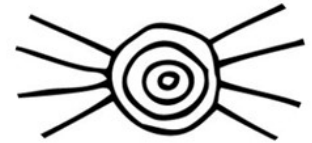
The Arts on The Sutherland Hospital campus are to be delivered in conjunction with community to celebrate the local cultural heritage.



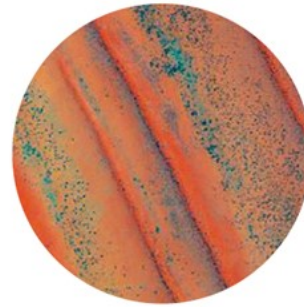
The Sutherland Hospital Redevelopment Stage 1 interior finishes



Connection to Country through Song



Creation of Meeting Place



Connection to Country through Art

Interior design

The Sutherland Hospital Operating Theatre complex will be a holistic healing environment using human centred design which promotes health and wellness by being warm, inviting and harmonious.

The interior design strategy for the new operating theatres will be inspired by the local environment of the Sutherland Shire, embracing a calming colour palette similar to The Sutherland Hospital Redevelopment Stage 1.

The interior design is focused on creating a positive healthcare experience where patients feel safe, informed, reassured and cared for and to provide a supportive and high quality work environment for staff.

FOR MORE INFORMATION:

@ SESLHD-Sutherland-HospitalRedevelopment@health.nsw.gov.au

seslhd.health.nsw.gov.au