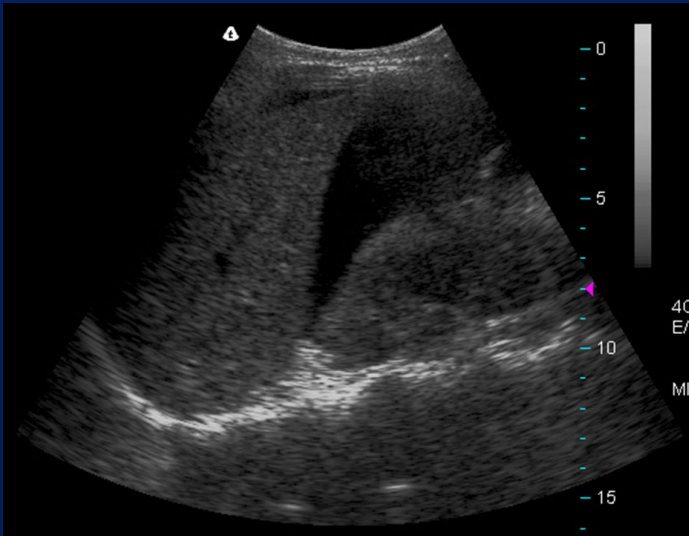




Emergency Department

Thinking of Emergency Medicine?



POW ED/CC SRMO Evening
20th July
Therese Becker



Emergency Department

Emergency Medicine

POWH ED vs Critical Care

- Breadth of experience
- Access to a variety of terms
- Readiness for ED registrar positions and locum opportunities
- Entry into ED training
- Pastoral support
- We can provide anaesthetics and ICU over 2 years (can guarantee 1 as SRMO)
- Other secondments include MH, paed, peripheral ED opportunities



Why a career in emergency medicine?



Emergency Department

- Sense of being part of something bigger
 - Bridge between community and hospital
- Immediacy of relationship with patients of all backgrounds and ages
- Incredible variety
 - Mental health, orthopaedics, aged care, gynaecology, cardiology, surgical etc
- Large and wonderful team: senior, junior, inter-professional- horizontal structure
- Extremely flexible and family friendly
- Hands-on
 - Procedures, airway, ultrasound
- Flexible problem-solving- incomplete information

Emergency Medicine



Emergency Department

-Position options: SRMO or PT

- PT if a trainee

- Eligibility has changed:

- Applications open 1st August- close 13th Sept
 - General registration
 - 6 months (or 26 weeks) in a single ED in previous 12 months

- SRMO otherwise

- Highlight to us if you're looking to apply for training as an SRMO (helps application, affects term allocations)



Emergency Department

Training Program

Structured minimum five-year training program,

- Completion of four Training Stages comprising:
 - Minimum 42 FTE months training in emergency medicine;
 - Minimum 6 FTE months training in disciplines other than emergency medicine;
 - Minimum 6 FTE months training in Critical Care (intensive care medicine and/or anaesthesia); and
 - Minimum 6 FTE months elective in the final training stage.



Exams/Assessments

- Progress from stage 1 to stage 2
 - 12 months in ED
 - Complete primary exam
 - Written & Viva
- WBAs
- Research project- project or coursework
- To become a FACEM
 - Time complete
 - Fellowship exam
 - Written and osce



Emergency Department

Why work at POWH?


- Great team- team of over 60 Registrars and SRMOs
- Flexibility in rostering
- 4 hours protected teaching weekly- SIM procedures courses and focussed sessions
- Additional primary and fellowship teaching
- 24 months accreditation in POWH ED and lots of secondment opportunities
- Well supervised
- SRMO support: Paris Ramrakha & Nick Stewart
- Special skills at POWH: tox, US



Emergency Department

Emergency Medicine

- Specialty options
 - Emergency Medicine
 - Tertiary to peripheral
 - Work all over Australia
 - International EM
 - Teaching/ training/ Admin
 - ACEM
 - DPET/ DEMT
 - Policy
 - Academia/ Online EM
 - Subspecialty/ special interest
 - Toxicology
 - Retrieval
 - Resuscitation
 - Point of care ultrasound



[Home](#) / [Training](#) / [Do you want to become an EM Physician?](#)

Do you want to become an EM Physician?

Emergency Medicine (EM) is an exciting and rewarding career choice, attracting individuals who enjoy variety and challenge. EM physicians manage the full spectrum of physical and behavioral emergencies. They are experts in identifying the critically ill and injured and providing safe and effective immediate care.



The challenges

- Fatigue: shift work and weekends
- Can be thankless and demanding
- Working environment can be tough

- Working environment subject to external pressures
 - Beds/ crowding
 - Policy environment
 - Staff fluctuations

If you are interested feel free to contact me to discuss further



Emergency Department

- Therese.Becker@health.nsw.gov.au