

Peer Education and Youth Advisory Committee (PEYAC) | Consumer Position

1. Title

Peer Educator and Youth Advisor

Consumer Position for South Eastern Sydney Local Health District (SESLHD)

2. Responsible to

Projects Team, Sexual Health & Blood Borne Virus Services, SESLHD

3. Based

Meetings are held fortnightly at headspace Bondi Junction.

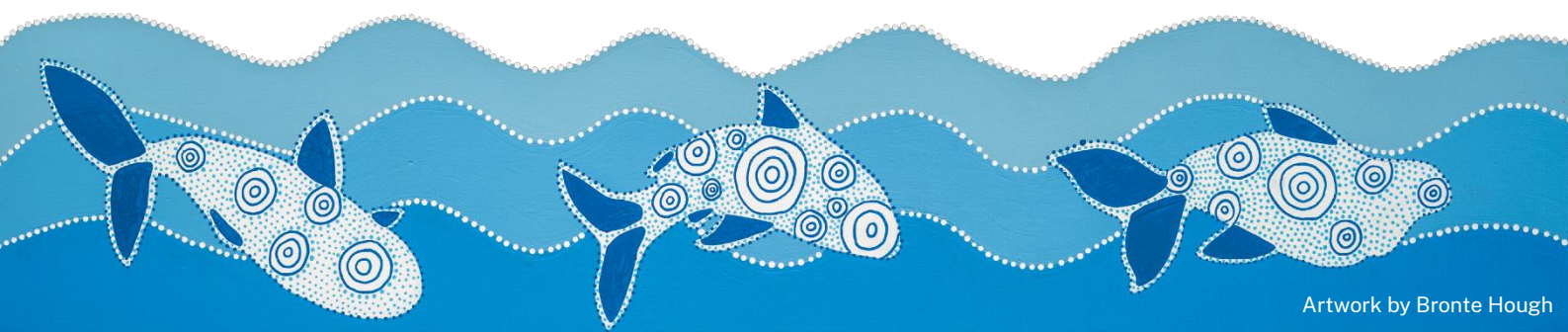
Outreach activities to occur within the **Northern suburbs of SESLHD**. These include the City of Sydney, Randwick, and Bayside Council areas (e.g., Bondi Junction, Botany, Coogee, Hillsdale, La Perouse, Maroubra, Randwick, and Woolloomooloo).

Independent travel to these locations for shifts is a requirement of this role.

4. Key Duties

Once trained:

1. Undertake outreach activities in communities, health, and other youth settings within the Northern suburbs of SESLHD.
2. Provide peer education to young people regarding sexual health and alcohol & other drugs through outreach, informing health services, and referral processes.
3. Deliver a youth advisory function to SESLHD.
4. Be a youth representative at meetings and planning activities with health staff.
5. Provide feedback through group consultations about ways to make health services and resources more youth accessible.
6. Partake in meeting chair roles during team meetings.
7. Work as a team member with people from different backgrounds.



5. Skills and Competencies

Requirements for the role:

- Aged between 16 and 23 years old.
- Live, work, study or be connected to the Northern suburbs of SESLHD.
- Willing to approach and talk to other young people in public.
- Interested in providing safe sex and alcohol & other drug health information, referrals, and health resources, including condoms.
- Able to work both independently with minimal supervision and in teams, taking direction from the Coordinators of the Program.
- Able to work with young people of diverse backgrounds and sexual orientations.
- Able to work rostered shifts, including some evenings and weekends.

6. Type and period of employment

Employment as a Consumer Representative.

Employment from October 2025 to October 2026, after 3-month probation period. There is opportunity for ongoing employment through the annual recruitment process.

Variable hours each fortnight (usually around 4-8 hours per fortnight). Hours to be flexible and negotiated with occasional evening and weekend work.

7. Minimum commitment required to remain actively employed in the role

- Attend **at least 5 out of 6** team meetings per three-month period
 - Evening team meetings are held every second and fourth Tuesday of the month
- Work **at least 6** outreach shifts or related activities (excluding team meetings) per three-month period

8. Payment

You will be paid according to the SESLHD Consumer and Carer Representatives' Payment Schedule. Rates for meetings and outreach activities:

- 1 hour - \$40
- 2 hours - \$80
- 3 hours - \$120
- 4 hours - \$160
- Full Day (5 hours or more) - \$220

