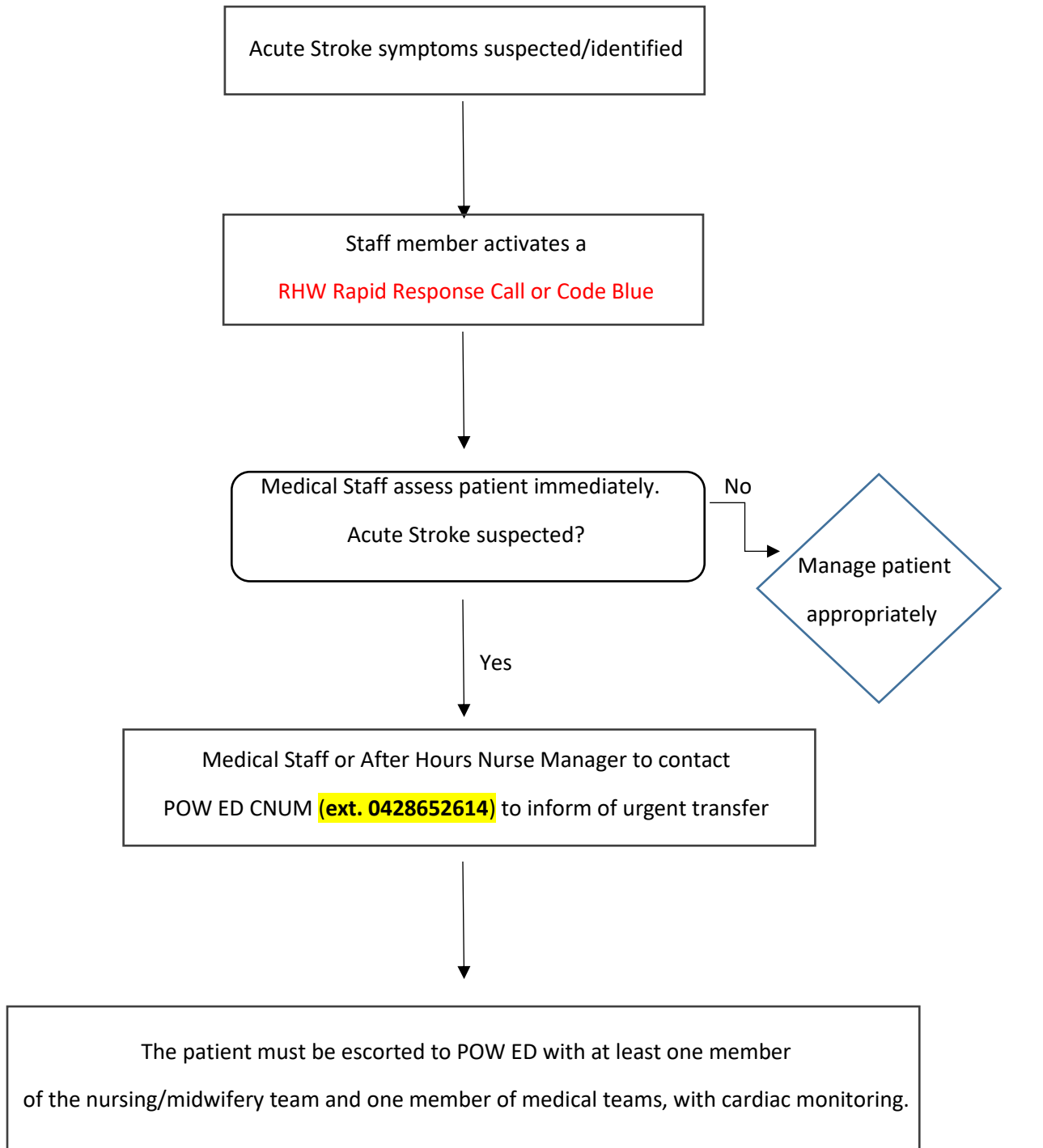


## Management of patients with suspected or identified acute stroke symptoms at RHW



**A Code Blue must be activated at any time if there is any compromise of airway, breathing or circulation, the patient is acutely unwell and/or other potential differential diagnoses for**



**Management of patients with suspected or  
identified acute stroke symptoms at RHW**  
**acute deterioration is suspected**