

SESLHD PROCEDURE COVER SHEET



Health
South Eastern Sydney
Local Health District

NAME OF DOCUMENT	Inpatient Management of Patients Admitted to SESLHD Facilities using Medicinal Cannabis Products
TYPE OF DOCUMENT	Procedure
DOCUMENT NUMBER	SESLHDPR/620
DATE OF PUBLICATION	April 2022
RISK RATING	High
LEVEL OF EVIDENCE	National Safety and Quality Health Service Standards: Standard 1 – Governance for Safety and Quality in Health Service Organisations (1.18) Standard 4 – Medication Safety (4.2, 4.3, 4.10, 4.13)
REVIEW DATE	April 2024
FORMER REFERENCE(S)	Nil
EXECUTIVE SPONSOR or EXECUTIVE CLINICAL SPONSOR	Director, Clinical Governance and Medical Services
AUTHOR	Nicholas Lintzeris, Director Drug and Alcohol Services Katie Hargreaves, QUM Lead Pharmacist
POSITION RESPONSIBLE FOR THE DOCUMENT	Erica Wales, QUM Lead Pharmacist Erica.wales@health.nsw.gov.au
FUNCTIONAL GROUP(S)	Pharmacy/Pharmaceuticals Medicine
KEY TERMS	Cannabis
SUMMARY	This procedure establishes the processes for the management of medicinal cannabis products when patients are admitted taking or using these products, including prescription, supply, secure storage and administration in patient care areas at SESLHD.

COMPLIANCE WITH THIS DOCUMENT IS MANDATORY

**This Procedure is intellectual property of South Eastern Sydney Local Health District.
Procedure content cannot be duplicated.**

Feedback about this document can be sent to SESLHD-Policy@health.nsw.gov.au

**Inpatient Management of Patients
Admitted to SESLHD facilities using
Medicinal Cannabis Products**

SESLHDPR/620

1. POLICY STATEMENT

There is growing use of cannabis products for medicinal purposes in the community. A number of legislative and regulatory changes have been made by the Commonwealth Department of Health and NSW Ministry of Health to facilitate access to medicinal cannabis products to appropriate patients. There are a range of legal medicinal cannabis products available in Australia.

NSW Ministry of Health has also taken steps to allow adults with a terminal illness to possess illegal cannabis products through the Medicinal Cannabis Compassionate Use Scheme with less fear of prosecution. The Scheme does not supply cannabis or cannabis products or endorse the use of cannabis products not lawfully prescribed.

This procedure establishes a process for SESLHD staff to follow when a patient presents to hospital using a cannabis product for medicinal purposes. It should be read in conjunction with [NSW Health Policy Directive PD2013_043 - Medication Handling in NSW Public Health Facilities](#).

2. BACKGROUND

There are a number of ways in which patients may access cannabis products, which affect the way the product should be managed during an inpatient admission.

- **Legally prescribed registered medications:** Nabiximols (Sativex®) is an oral spray which is registered in Australia for spasticity in multiple sclerosis. It may be prescribed for other indications as an off-label use. Other products registered by the TGA in the future will fall under this category.
- **Legally prescribed unregistered medications:** A range of cannabis products are available after approval from the TGA, usually through the Special Access Scheme, Authorised Prescriber Schemes or via clinical trials (on the Clinical Trial Notification (CTN) or Clinical Trial Exemption (CTX) schemes).
- **Cannabis or cannabis products used under the Medicinal Cannabis Compassionate Use Scheme (not legally prescribed):** This Scheme provides guidelines for NSW Police Officers to use their discretion not to charge adults with a terminal illness and their identified carers for possession of cannabis if they are registered with the Scheme. The Scheme does not supply cannabis or cannabis products, and products obtained for use by these patients are not lawful.
- **Cannabis or cannabis products in any form that have been obtained unlawfully and are not legally prescribed:** This includes products that are not regulated, but may also include registered or unregistered medicines obtained without a legal prescription.

Inpatient Management of Patients Admitted to SESLHD facilities using Medicinal Cannabis Products

SESLHDPR/620

The scope of this procedure is limited to the management patients admitted taking medicinal cannabis products. When starting a patient on new treatment the requirements of the TGA and/or NSW Ministry of Health must be followed. Further information can be found at:

- <https://www.tga.gov.au/access-medicinal-cannabis-products-1>
- <https://www.health.nsw.gov.au/pharmaceutical/cannabismedicines/Pages/default.aspx>

In addition to TGA and NSW Ministry of Health requirements, [SESLHDPD/183 - Medicine: Drug Formulary Policy](#) also applies.

3. DEFINITIONS

Medicinal cannabis: Refers to the therapeutic use of cannabinoids derived from the cannabis plant, or synthetically made cannabinoids such as dronabinol and nabilone.

Tetrahydrocannabinol (THC): One of the cannabinoids which may be extracted as a therapeutic good from the cannabis plant. THC is responsible for the euphoric, psychoactive effects of the cannabis plant. THC is listed as a Controlled Drug in Schedule 8 (S8) of the Poisons Standard and products containing greater than 2% THC are handled as S8 medicines.

Cannabidiol (CBD): Another one of the cannabinoids which may be extracted as a therapeutic good from the cannabis plant. CBD is not psychoactive. It is included under Schedule 4 (S4) Prescription Only Medicine of the Poisons Standard when preparations for therapeutic use contain 2% or less of other cannabinoids.

Nabiximols: A combination of CBD and THC in a 50:50 ratio. Nabiximols is the only medicinal cannabis product included on the Australian Register of Therapeutic Goods (ARTG). A TGA registered product (Sativex®) is available in an oromucosal spray formulation.

TGA Authority: A number issued by the TGA allowing a medical officer the right to prescribe an unregistered medicinal cannabis product for a particular patient or group of patients. No TGA authority is required to prescribe registered cannabis product, including for off label indications.

NSW Ministry of Health (MoH) Authority: A number issued by the NSW MoH allowing the prescriber to prescribe and supply a Schedule 8 cannabis medicine (registered or unregistered). NSW MoH Authority is required in the following circumstances:

- to prescribe to a drug-dependent person including a person treated under the Opioid Treatment Program, or
- to prescribe a compounded medicine, or
- to supply under a clinical trial (if an unregistered product).

Products containing CBD-only are Schedule 4 medications and do not require NSW Health Authority.

SESLHD PROCEDURE

Inpatient Management of Patients Admitted to SESLHD facilities using Medicinal Cannabis Products

SESLHDPR/620

4. RESPONSIBILITIES

4.1 Employees will:

- Manage legally prescribed cannabis products in accordance with [NSW Health Policy Directive PD2013_043 - Medication Handling in NSW Public Health Facilities](#)
- Ensure that non-legally prescribed cannabis products are not handled as medicines
- Escalate any patient safety or legal concerns regarding a patient's use of cannabis products to their line manager.

4.2 Line Managers will:

- Provide support for the implementation of these procedures

4.3 Medical staff will:

- When a patient presents to hospital using a cannabis product for medicinal purposes, establish whether the cannabis is legally prescribed
- Obtain copies of relevant Authority documentation and file in the patient's Health Care Record
- Assess the appropriateness of continuation of a legally prescribed cannabis product during the patient's inpatient stay. Prescribe legally prescribed medicinal cannabis products on an approved medication chart or electronic equivalent, including the name of the authorised prescriber
- Document clearly in the Health Care Record all relevant information surrounding the patient's use of a medicinal cannabis product
- Actively inform patients and/or their carers regarding the application of these procedures.

4.4 Nursing Staff will:

- Administer legally prescribed cannabis products to the patient in accordance with the Medical Officer's prescription
- Ensure that a patient's own supply is available for use and request further supply be obtained when necessary
- Not administer or store non-legally prescribed cannabis products.

4.5 Pharmacy Staff will:

- Provide advice on obtaining further supply of cannabis products and liaise with community providers where necessary
- Verify the relevant Authority numbers as documented by the Medical Officer.

**Inpatient Management of Patients
Admitted to SESLHD facilities using
Medicinal Cannabis Products****SESLHDPR/620****5. PROCEDURE****5.1 Establish whether the patient's cannabis is legally prescribed for medicinal purposes**

Both TGA registered and unregistered cannabis products can be legally prescribed in Australia for medicinal purposes. When a patient presents to hospital using a medicinal cannabis product, the admitting Medical Officer must make every effort to ensure that the cannabis product has been legally obtained under appropriate authorisation where required.

5.1.1 The Medical Officer must:

- Confirm and document the name of the doctor who prescribed the medicinal cannabis for the patient prior to admission
- Confirm and document the usual place of supply
- Obtain copies of relevant TGA and/or MoH Authority documentation and file in the patient's Health Care Record (see section 3 for Authority requirements)
- Communicate directly with the prescribing doctor and dispensing pharmacist to clarify the product, dose and amount supplied to the patient.

Out of hours, clinical judgment should be applied and the legality confirmed at the earliest opportunity. All legally obtained medicinal cannabis products will have been prescribed by a medical practitioner and dispensed by a pharmacist, and there should be evidence of routine pharmacy labelling on the product.

5.2 Continuing Legally Prescribed Cannabis in Hospital

The appropriateness of continuation of legally prescribed medicinal cannabis during the patient's admission must be confirmed by the treating team in discussion with the patient and/or carer, and the original prescriber. Discussion with an appropriate specialist (e.g. palliative care, neurology, pain) is also recommended. The patient's wishes must be duly respected whilst balanced with any risks, for example potential drug interactions and suspected adverse drug effects.

5.2.1 Prescribing

If appropriate to continue, the treating Medical Officer will prescribe the patient's own medicinal cannabis in the approved electronic medication management system as per [NSW Ministry of Health Policy - PD2013_043 Medication Handling in NSW Public Health Facilities](#), and [NSW Ministry of Health Information Bulletin – IB2019_041 Schedule 8 Cannabis Medicines and Unregistered Schedule 8 Medicines](#).

The order must include:

- The name of the original prescriber
- The relevant Authority number/s from either the TGA, NSW MoH or both (see section 3 for Authority requirements)
- The name of the usual place of supply.

**Inpatient Management of Patients
Admitted to SESLHD facilities using
Medicinal Cannabis Products**

SESLHDPR/620

A new Authority is not required when continuing treatment with a medicinal cannabis product for a patient in hospital if the patient was the subject of an Authority immediately prior to hospital admission.

5.2.2 Supply for Inpatient use

SESLHD Pharmacy Departments do not routinely stock any medicinal cannabis products. As supplies are usually obtained under authorisation, the patient's own supply must be used for administration in hospital. This should be explained to the patient and their agreement documented in the Health Care Record.

Prior to use, the patient's own medicinal cannabis product should be checked by a Pharmacist, Medical Officer or Registered Nurse (RN) to confirm:

- It is the correct prescribed medication for that patient
- It is appropriately labelled
- It is in date
- The approximate quantity remaining (if possible to determine)
- That the product appears to be in good condition and suitable for use.

It may be necessary to arrange for the patient's family / carer to obtain further supply via the usual prescriber and community pharmacy. This should be arranged as soon as possible following admission if there is unlikely to be sufficient quantity to last for the expected duration of the admission.

If the patient's own supply cannot be used and further supply cannot be obtained, options should be discussed with the facility Pharmacy Department.

Different medicinal cannabis products have different compositions and clinical judgement should be applied before changing to a different product. The implications for future supply (e.g. availability, Authority to Prescribe etc.) post-discharge should also be considered.

5.2.3 Storage and Handling for Patient's Own Legally Prescribed Cannabis Products**5.2.3.1 Products Containing CBD only**

Products containing CBD only are Schedule 4 medicines and do not have any special storage or handling requirements. They should be managed in accordance with local business rules for use of patient's own medicines.

5.2.3.2 Products Containing THC

For products containing THC, Schedule 8 (S8) medicine storage and handling requirements must be followed in accordance with [NSW Health Policy Directive PD2013_043 - Medication Handling in NSW Public Health Facilities](#) and facility business rules.

Inpatient Management of Patients Admitted to SESLHD facilities using Medicinal Cannabis Products

SESLHDPR/620

Recording in the S8 Drug Register

Patient's own supplies must be documented as the patient's own in the S8 Drug Register. The drug name (THC or CBD or both), the strength and formulation, e.g. tablet (mg) or liquid (mg/mL), must be clearly documented in the S8 Drug Register. A separate page of the drug register should be designated for that drug and that patient only.

When using a patient's own medicine, recording of the 'amount received' volume in the S8 Drug Register is not required. The 'amount given' (dose) (e.g. sprays, tablets, drops or mL) must be recorded in the S8 Drug Register at each administration.

Storage of Non-Refrigerated THC-containing Products

The patient's own medicinal cannabis must be stored in the S8 medication storage unit.

Storage of THC-containing Products requiring Refrigeration

Where the product requires refrigeration, the product must be stored:

- In a locked medication refrigerator, which is securely attached to the structure of the building, or in a refrigerator that is in a locked room to which the public does not have access.
- If goods other than Schedule 4 Appendix D medicines are to be kept in the refrigerator, the Schedule 8 medicines must be kept separated from them, such as in a locked box attached to the refrigerator.
- If these requirements are not able to be met on the ward, the medicine should be stored in a nearby ward / area where the requirements can be met.
- The refrigerator will remain locked when not in immediate use and the keys to the refrigerator will be kept with the S4D/S8 keys which will be managed in accordance with [NSW Health Policy Directive PD2013_043 - Medication Handling in NSW Public Health Facilities](#).

Some refrigerated products may be stored out of the refrigerator once in use. Check the product packaging and/or liaise with the Pharmacy Department to clarify this for individual products. If able to be stored at room temperature, the date of removal from the refrigerator and use-by date should be clearly recorded on the packaging, and the product stored in the S8 medication storage unit.

At time of discharge

When returning the medication to the patient, the drug must be signed out of the S8 Drug Register by two nurses, one of whom is a RN.

If the S8 medication is not to be returned to the patient, the medication must be destroyed by a Pharmacist on the ward in the presence of a RN.

**Inpatient Management of Patients
Admitted to SESLHD facilities using
Medicinal Cannabis Products**

SESLHDPR/620**5.2.4 Additional Requirements for Children**

When a Schedule 8 cannabis medicine is prescribed to a child (under 16 years), an exemption under the Children and Young Persons (Care and Protection) Act 1998 must be sought, by making an application to the Ministry. If the child has been undergoing treatment with the Schedule 8 cannabis medicine prior to admission, an exemption may already be in place. The Ministry of Health should be contacted to seek clarification and details of the exemption documented in the child's Health Care Record.

5.3 Management of Patients Using Non-Legally Prescribed Cannabis Products under the Medicinal Cannabis Compassionate Use Scheme

The NSW Government has developed [The Medicinal Cannabis Compassionate Use Scheme](#) (the Scheme) to extend compassion to adults with a terminal illness. NSW residents who are aged 18 years and over who have a terminal illness are eligible to register for the Scheme.

To register for the Scheme, adults with a terminal illness require a medical practitioner who is registered in Australia and involved in their ongoing care to certify that the person has a terminal illness as defined by the Scheme. Each eligible adult may nominate up to three carers who will also be registered under the Scheme. Even though the patient is registered under the Scheme, products obtained for use under the Scheme are not legally prescribed and remain unlawful.

On admission to a SESLHD facility, a history of the patient's use of non-legally prescribed cannabis (NLPC) must be taken and disclosure of use encouraged. The patient / carer must provide the registration documentation issued from the NSW Department of Justice for themselves and their carers registered under the Scheme. The Scheme registration documents must be copied and filed in the patient's Health Care Record. The originals must be given back to the patient / carer.

Non-legally prescribed cannabis products may not be prescribed for continuation in hospital, even if the patient is registered under the Scheme. SESLHD staff must not administer or assist patients or carers in the administration of non-legally prescribed cannabis products, either in hospital or in the patient's home. SESLHD staff cannot store any non-legally prescribed cannabis products on site, including in the ward drug trolley or S8 medication storage unit. Staff should request that a patient or carer remove any non-legally prescribed cannabis products from hospital premises.

Patients should be fully informed that their cannabis products cannot be prescribed, administered, or stored by SESLHD staff. Patients should be made aware that continued use of any illegal cannabis preparation remains unlawful and of the risks of using non-legally prescribed cannabis products of unknown composition and concentrations of cannabinoids and other potentially dangerous substances, and the risk of drug interactions.

If the patient wishes to continue their use of non-legally prescribed cannabis products whilst in hospital, they should be asked to advise the nursing staff, medical officer and/or

**Inpatient Management of Patients
Admitted to SESLHD facilities using
Medicinal Cannabis Products****SESLHDPR/620**

multidisciplinary staff of each use. Patients are responsible for the safe storage of their own cannabis products.

If the patient's cannabis product is smoked, the patient must be advised that smoking is restricted to designated smoking zones as per hospital site regulations.

All advice given including any changes to therapy and the decision of the patient should be recorded in the patient's Health Care Record. All reported use of cannabis by the patient should also be recorded.

If harm has resulted from use of an illegal cannabis preparation, and the supplier can be identified, the hospital should consider bringing the matter to the attention of NSW Police

5.4 Management of Patients Using Cannabis Products that Have Been Obtained Unlawfully

On admission to a SESLHD facility, a history of the patient's use of non-legally prescribed cannabis must be taken. Patients should be made aware of the risks of using non-legally prescribed cannabis products of unknown composition and concentrations of cannabinoids and other potentially dangerous substances, and the risk of drug interactions. Advice given should be recorded in the patient's Health Care Record. All reported or suspected use of cannabis by the patient should also be recorded.

Non-legally prescribed cannabis products may not be prescribed for continuation in hospital. SESLHD staff must not administer or assist with patients or carers in the administration of non-legally prescribed cannabis products, either in hospital or in the patient's home. SESLHD staff cannot store any non-legally prescribed cannabis products on site, including in the ward medication trolley or S8 medication storage unit. Staff should request that a patient or carer remove any non-legally prescribed cannabis products from hospital premises.

Patients should be monitored for cannabis withdrawal and managed in accordance with [NSW Health Guideline GL2008_011 - Drug and Alcohol Withdrawal Clinical Practice Guidelines – NSW](#).

Any concerns regarding the safety or wellbeing of a patient should be discussed with the treating Senior Medical Officer and escalated to the Director of Clinical Services or Executive on-call as required.

If harm has resulted from use of an illegal cannabis preparation, and the supplier can be identified, the hospital should consider bringing the matter to the attention of NSW Police.

SESLHD PROCEDURE

Inpatient Management of Patients Admitted to SESLHD facilities using Medicinal Cannabis Products

SESLHDPR/620

6. DOCUMENTATION

S8 Drug Register
Medication Chart (where used)
Approved electronic Medication Management System
Health Care Record
IIMS Reports

7. AUDIT

To be included in regular audits of S4D/S8 registers.

8. REFERENCES

[NSW Health Policy Directive PD2013_043 - Medication Handling in NSW Public Health Facilities](#)
[NSW Health Guideline GL2008_011 - Drug and Alcohol Withdrawal Clinical Practice Guidelines – NSW](#)
[SESLHDPD/183 - Medicine: Drug Formulary Policy](#)
[The Medicinal Cannabis Compassionate Use Scheme](#)
[TGA, Accessing unapproved products, Medicinal cannabis – guidance documents](#)
St Vincent's Health Australia Guidelines for the Safe Prescribing, Dispensing and Administration of Medicinal Cannabis
[Therapeutic Goods Administration. Guidance for the use of medicinal cannabis in Australia: Overview. Version 1, December 2017](#)
SESLHD Memo: Medicinal Cannabis. TRIM: T18/17229
[NSW Health Information Bulletin IB2019_041 - Schedule 8 Cannabis Medicines and Unregistered Schedule 8 Medicines](#)

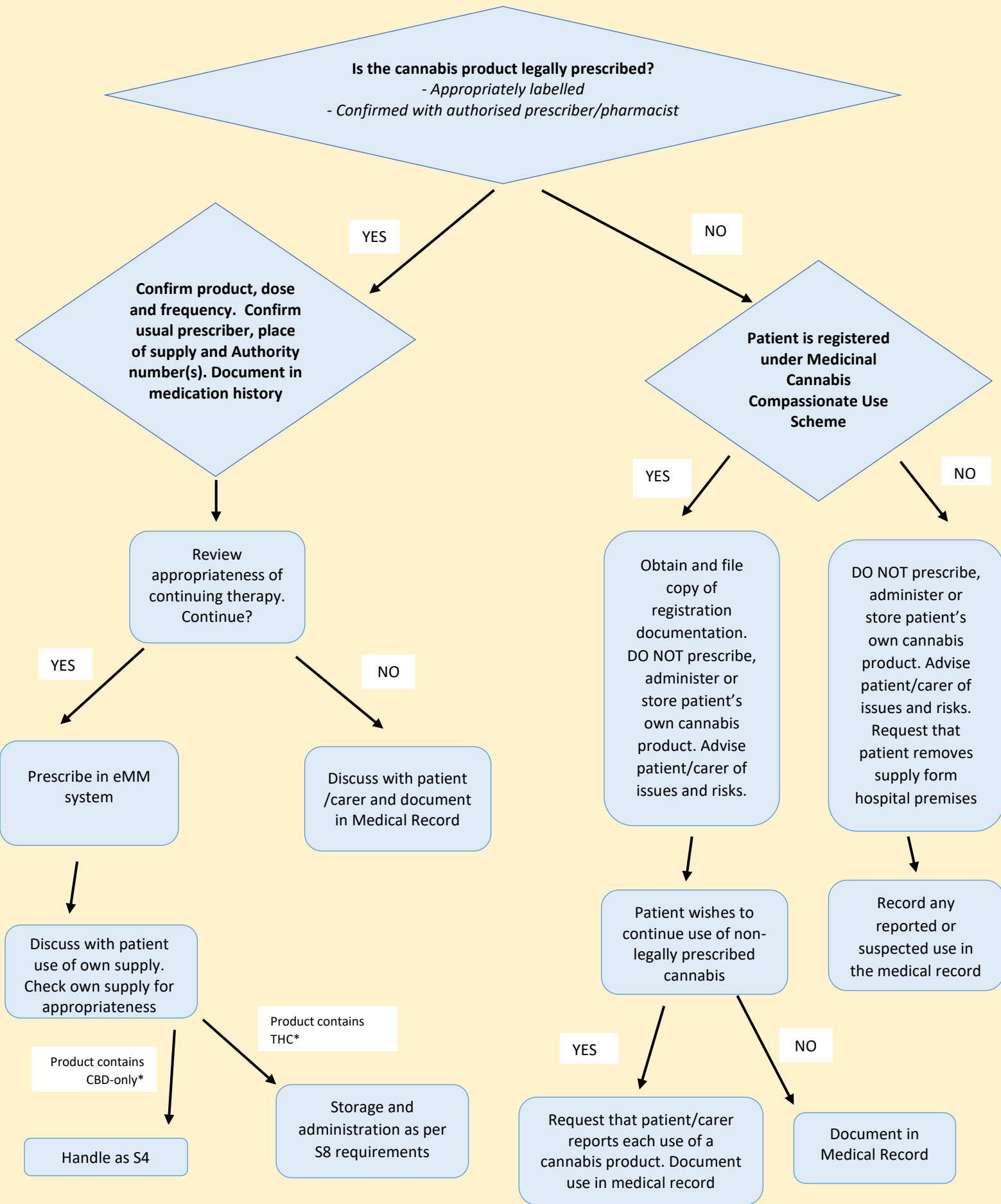
**Inpatient Management of Patients
Admitted to SESLHD facilities using
Medicinal Cannabis Products**

SESLHDPR/620

9. REVISION AND APPROVAL HISTORY

Date	Revision No.	Author and Approval
May 2018	DRAFT	Drafted by K. Hargreaves
June 2018	DRAFT	Feedback from Prof Richard Chye and advice from NSW Health Chief Pharmacist incorporated.
July 2018	DRAFT	Feedback from Dr Nick Lintzeris, Director of Drug and Alcohol Services incorporated.
August 2018	DRAFT	Feedback from Working Party members incorporated
August 2018	DRAFT	Further feedback from Working Party members incorporated following meeting
October 2018	DRAFT	Feedback received following Drafts for Comment period reviewed by Working Party and incorporated where relevant
November 2018	DRAFT	Processed by Executive Services prior to submission to SESLHD Quality Use of Medicine Committee and SESLHD Clinical and Quality Council.
December 2018	DRAFT	Approved at December SESLHD Quality Use of Medicine Committee
January 2019	1	Approved at December Clinical and Quality Council Meeting for publication.
November 2019	2	Changes made in accordance with revised MoH requirements as outlined in IB2019_041
December 2019	2	Approved at December Quality Use of Medicines Committee. To be tabled at the Clinical Quality Committee's February 2020 meeting.
March 2020	2	Approved at February 2020 Clinical and Quality Committee, noting that General Managers to manage refrigeration of S8 drug until March. Published by Executive Services.
March 2022	3	Minor review by Erica Wales: hyperlinks updated. Approved by Executive Sponsor. To be tabled at Quality Use of Medicines Committee.
April 2022	3	Approved at Quality Use of Medicines Committee.

MANAGEMENT OF PATIENTS PRESENTING TAKING CANNABIS FOR MEDICINAL PURPOSES



*CBD = Cannabidiol
THC = Tetrahydrocannabinol