

REGISTERED NURSE GRADSTART 2026



Prince of Wales Metro/ Rural exchange Stream



WHY CHOOSE US?

The Nursing Team at Prince of Wales is committed to the vision of transforming person-centred care together. To achieve this we enable our nurses to practice at their highest level in environments that support safe, person-centred care.

At Prince of Wales, we promote a unified, inclusive community of nursing that embraces CORE values that start with putting the person at the centre of everything we do. We are motivated to create the future of nursing and trust by working together we collaborate to achieve shared success.

We promote nurses to incorporate evidence based practice and seek opportunities to enhance practice through identified career development pathways. We also acknowledge the importance of focusing on supporting your wellbeing.

I look forward to sharing your nursing professional journey here at Prince of Wales and I wish you continued success and happiness as you progress your career ambitions.



Karen Tuqiri, Director of Nursing

OUR HOSPITAL

Prince of Wales Hospital and Community Health Service is a Level 6 Tertiary Referral Hospital with an inpatient bed base of 440. Each year we care for more than 60,000 patients in our Emergency Department and have around 50,000 admissions to the inpatient units. POWH offers outpatient and rural outreach services and provides more than 900,000 non-admitted patient care occasions each year, including innovative virtual models of care. We have transitioned the majority of inpatient units and wards to the Acute Services Building (ASB), including a state-of-the-art Emergency Department and Intensive Care Unit. POWH provides an exceptional staff experience and enhanced patient and family outcomes as a result of the provision of person-centred care.

Nursing Vision for Prince of Wales Hospital

“Transforming Person-Centred Care Together”



Nursing
@
Prince of Wales
Hospital



GRADSTART POWH

OUR PROGRAMS

Prince of Wales Hospital offers a range of options for the Gradstart program including:

- General stream
- Perioperative stream
- Metro/ rural exchange (February intake only)
- POWH/ Sydney Hospital and Sydney Eye Hospital (February intake only)
- Population and Community Health (February intake only)

COMMENCEMENT DATES

There are three intakes throughout the year with programs commencing in:

- February

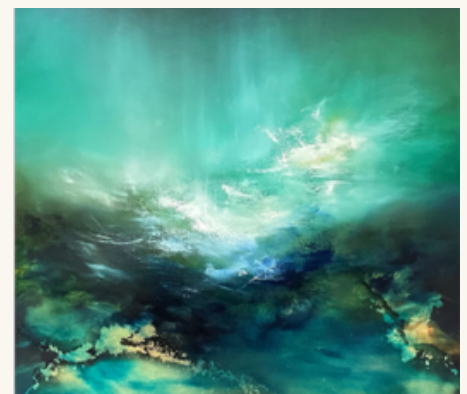


METRO/ RURAL EXCHANGE STREAM

Our 12-month Transition to Professional Practice Rural Metro Exchange is a unique program in partnership with South East Regional Hospital (Bega) in Southern NSW Local Health District. This stream will allow you to experience the difference between working in the 'big city' metropolitan area and also 'country' rural areas of NSW.

What we offer:

- A person-centred, friendly, caring and supportive workplace
- Rotations through two clinical facilities to develop comprehensive physical assessment skills and clinical reasoning in both metro and rural hospitals
- A dedicated preceptorship program
- Ongoing support from a wide range of clinicians and experts in their field, both in and after-hours
- An extended hospital, nursing and clinical orientation/ induction program, including supernumerary time
- Protected education time
- Graduate nurse-focused workshops
- Clinical reflective supervision
- Recognition of prior learning / Masters participants / ENs and previous work in health
- Individualised career development pathways
- Portfolio development
- Performance development feedback
- Specialty Clinical learning objectives
- Hospital and unit-specific training and education programs
- Facilitation of learning
- Clinical competency assessments
- Specialty workbooks
- Shared decision making
- Leadership development
- Coaching on an individual basis
- Clinical research involvement



Person Centred Care
Regeneration Artwork
Kris Ancog (RN)

By selecting Prince of Wales, you will have a smooth transition into the acute care clinical setting with many strategies that allow you to deliver nursing care in a safe environment.

GRADSTART POWH

LOCAL AREA

Randwick City

Randwick Local council is renowned for our world-class beaches and cafes and restaurants to tickle your taste-buds, The fascinating coastline and atmosphere will have you in awe the minute you arrive. Offering a mix of historic buildings, impressive beaches and coastal walks coupled with boutique restaurants, transport links and a vibrant nightlife, you'll never be short of things to do in this progressive community.

Transport

Prince of Wales Hospital is well serviced by the light rail and also by a regular public bus service to and from the city and surrounding beaches. For further information you may wish to view the Transport Infoline www.transport.nsw.info

Parking

Onsite parking is available for a fee in the privately managed car-park with a wait list available for nurses who wish to obtain a staff discounted parking space. There is limited on street parking in neighbouring streets.

Accommodation

There is no on-site accommodation at Prince of Wales Hospital however, there are many short and long-term options available within the local area.

Bega Valley

The Bega Valley Shire is an inclusive and welcoming community that integrates quality of life, prosperity, sustainable development, and conservation of the environment. With its stunning beaches, lush forests, and vibrant community, this region provides an ideal setting to grow your career while enjoying a relaxed, coastal way of life.

Accommodation

There may be on-site accommodation available in Bega for participants of this program. Contact the SERH coordinator for further information.



GRADSTART POWH

INFORMATION AND CONTACT

If you are interested in launching your nursing career at Prince of Wales Hospital or require any further information about us, please email or phone:

Nancy Yang

Nurse Manager – Workforce Planning and Development

Telephone: 02 9382 2074

Email: Ye.Yang@health.nsw.gov.au

Melissa Silva

Nurse Educator – Workforce Transition

Telephone: 02 9382 4535

Email: melissa.silva@health.nsw.gov.au

**More about Prince of Wales Hospital is available at
seslhd.health.nsw.gov.au/prince-of-wales-hospital**

**For more information about Nursing careers at Southern Local Health District
please email or phone:**

Kristy Wilson, District Nurse Educator/GradStart Coordinator

Telephone: 0419 436 461

Email: kristy.wilson@health.nsw.gov.au

**More about South East Regional Hospital is available at
nsw.gov.au/departments-and-agencies/nsw-health/service-directory/bega-south-east-regional-hospital**

All enquiries welcome!