

**SAQ 1**

You are preparing for your job interview for an Emergency Consultant position at a busy metropolitan hospital. You are aware that NEAT is an important national policy affecting Australian Emergency Departments.

a. What does NEAT stand for? ( 1 mark)

---

b. What is the definition of Access Block ? (2 Marks)

---

---

c. What is the National Emergency Access Target ? (2 Marks)

---

---

d. Outline potential solutions to improving Access Block & Overcrowding (6 Marks)

---

---

---

---

---

---

**SAQ 2**

A 48 year old haemodialysis patient presents to ED complaining of shortness of breath, muscle weakness and nausea

Vital signs are:

Temp 37.2 C BP 100/50 mmHg

RR 20/min SaO<sub>2</sub> 94% on air

GCS 15

Weight 76kg

The following ECG is obtained (see next page):

a. What is the most likely diagnosis?

---

b. List 5 potential causes of this condition in this patient

---

---

---

---

---

c. List 5 potential treatments for this condition in this patient

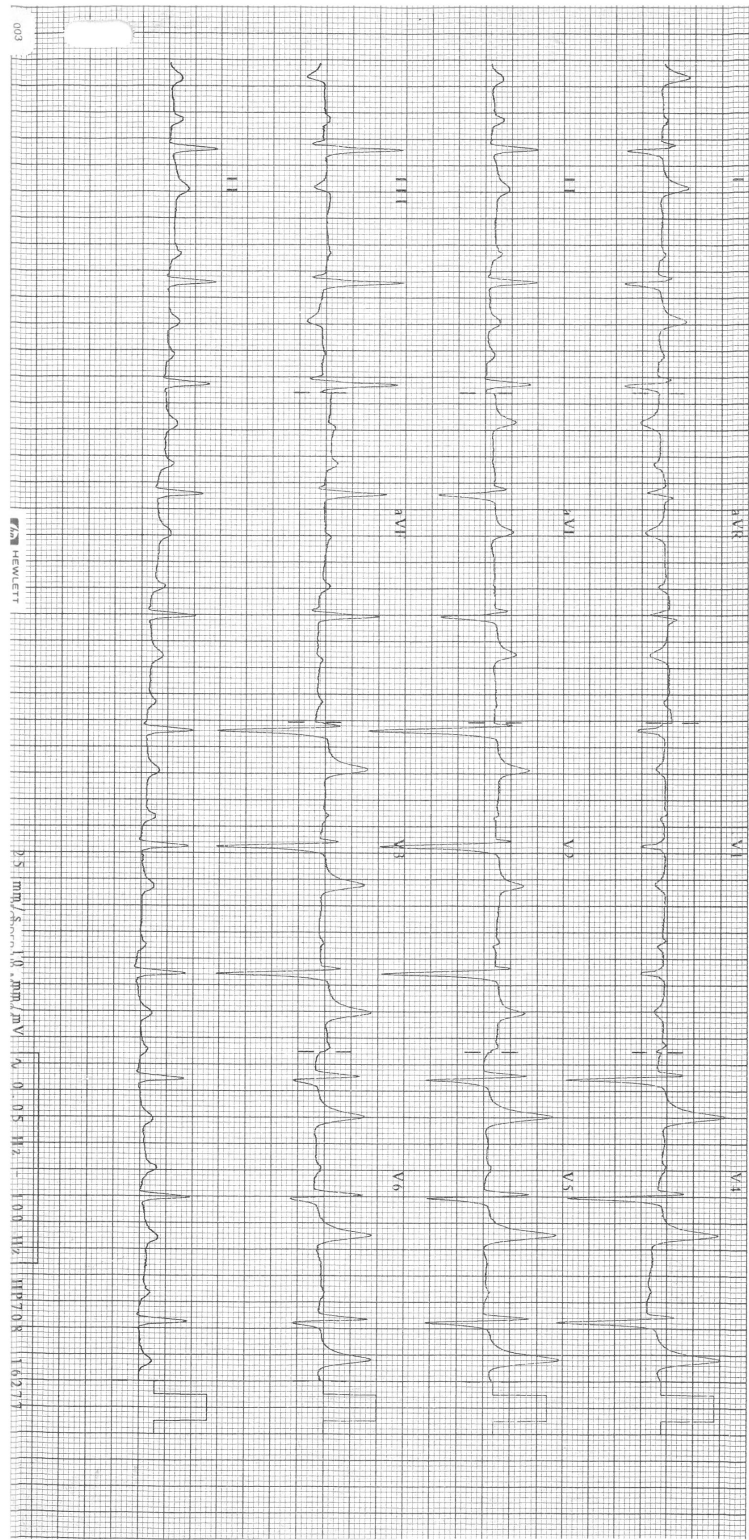
---

---

---

---

---



**SAQ 3**

A 60 year old male presents to you Emergency Department complaining of chest pain for the last 2 hours. He has no known medication history and does not take any regular medications.

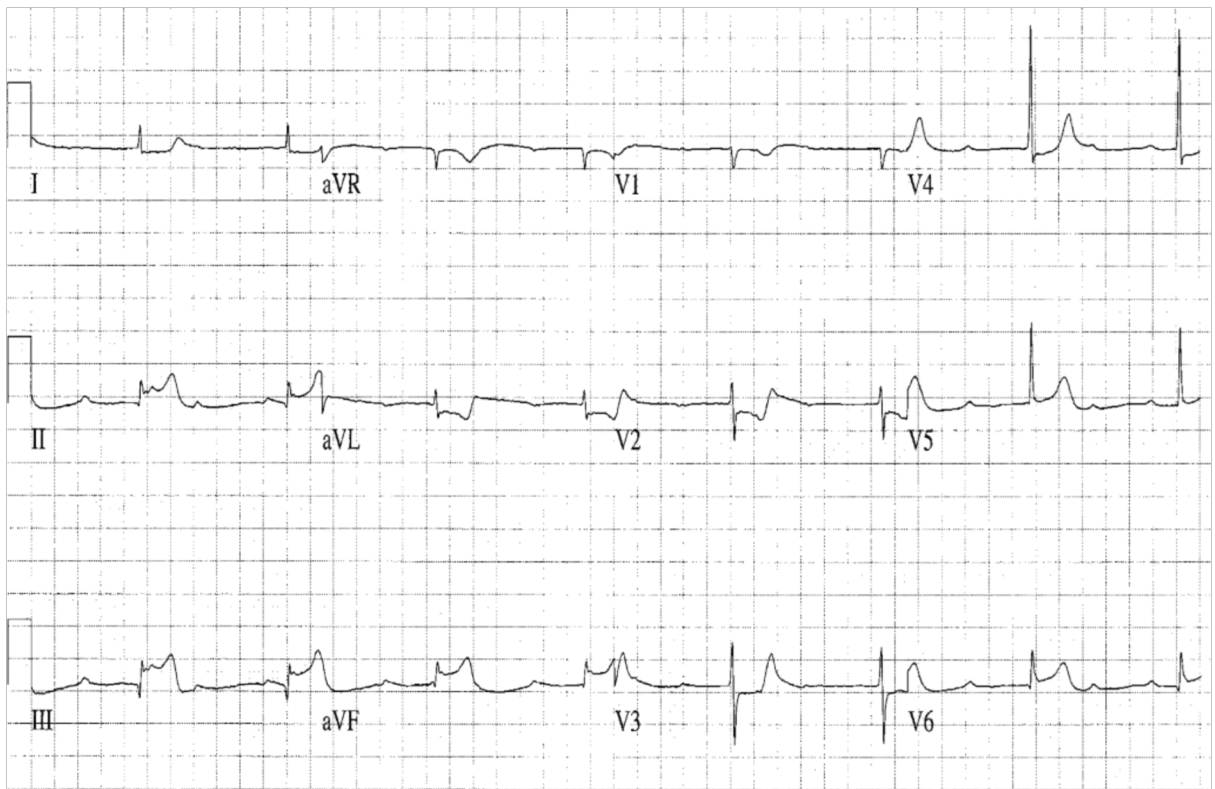
His ECG on arrival is below.

- a. What is your interpretation of his ECG ? (3 Marks)

---

---

---



b. The patient's blood pressure is 80mmHg. Outline the key steps in managing his hypotension. (4 Marks)

---

---

---

---

---

c. The cardiology team have advised you to commence the patient on a vasoactive agent to improve his blood pressure. List 3 appropriate inotropes / vasopressors and their dosing below. (3 Marks)

---

---

---

**SAQ 4**

a) Define triage (3 marks)

---

---

---

b) What are the underlying principles of triage? (2 marks)

---

---

c) Populate the following table with the correct values (5 marks)

ATS Category	Max waiting time	ACEM target % seen in time
ATS 1		
ATS 2		
ATS 3		
ATS 4		
ATS 5		

**SAQ 5**

A 14 year old woman is brought in by ambulance distressed and combative. She tells the nurse she has been sexually assaulted by a male relative but doesn't want to involve the police or her family to be informed.

1. List four potential medical complications (other than HIV) of sexual assault and any prophylactic treatments available that you will need to discuss with her.

---

---

---

---

2. List three factors you would take into consideration when considering HIV post-exposure prophylaxis.

---

---

---

3. Give three examples of strategies to preserve potential forensic evidence.

---

---

---

SAQ 6 & 7

You 're department receives a call notifying you of a chemical warfare incident in a city building near your tertiary centre. It is an unknown gas attack with approximately 100 people on the floor where the gas was released. HAZMAT is on scene and estimated casualties will begin to arrive at your hospital in approximately 30 minutes.

1. What are 5 of the components of the hospital emergency operation plan? (5 marks)

---

---

---

---

---

How will you triage patients coming in? (3 marks)

---

---

---

List 6 steps for a decontamination guideline for a disaster like this. (6 marks)

---

---

---

---

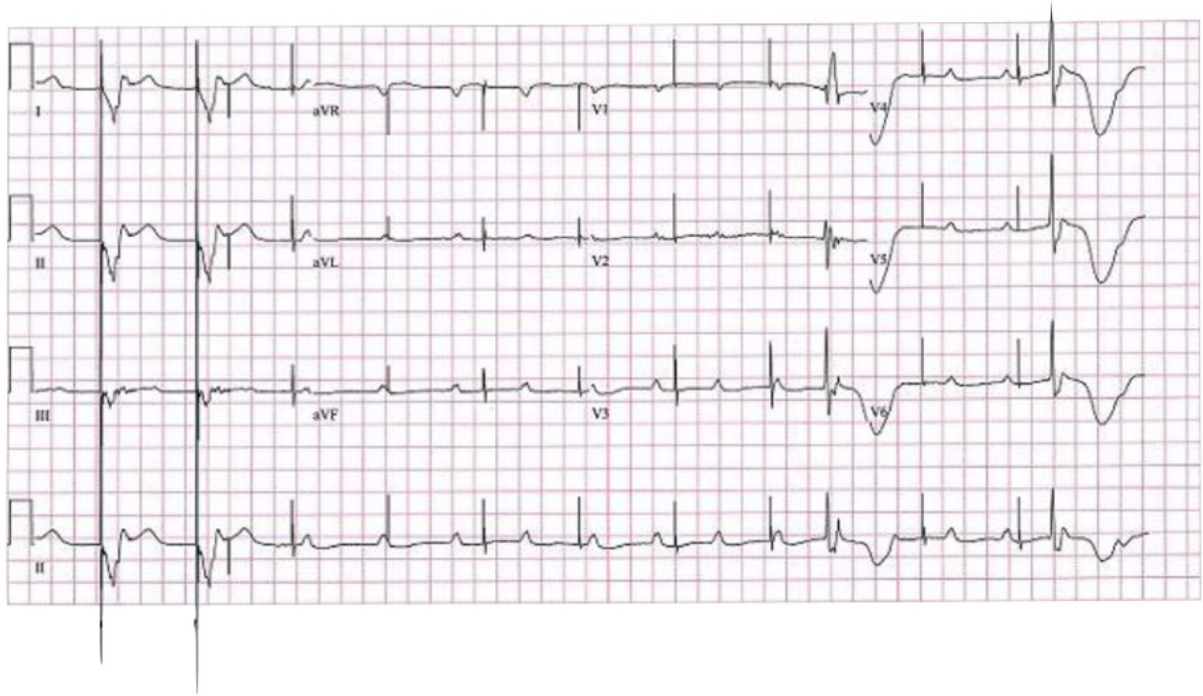
---

---



SAQ 8

A 16 year old boy with a congenital heart problem presents to ED with episodes of syncope. This is his ECG.



a) Describe the ECG (5 marks)

---

---

---

---

---

b) Name 5 possible causes for this ECG (5 marks)

---

---

---

---

---

SAQ 9

A 24 year old woman has just died in your ED despite active resuscitation after sustaining massive head injuries in a motor vehicle accident. Police are in attendance but her family members are unaware of the situation.

a) How will you break the news to the family? (6 marks)

---

---

---

---

---

---

---

b) In what circumstances must a death be reported to the coroner? (4 marks)

---

---

---

---

SAQ 10

A 25 year old woman presents to ED after a large wooden plank fell on her left foot. She describes pain in the mid-foot region.

a. What are the three components of the Ottawa foot rules ? ( 3 marks)

---

---

---

b. What are the three exclusion criteria for the application of the OFR's?

---

---

---

c. Foot x-rays are taken and reveal an isolated un-displaced fracture of tuberosity of the navicular bone. What are 5 important features of your subsequent management?

---

---

---

---

---