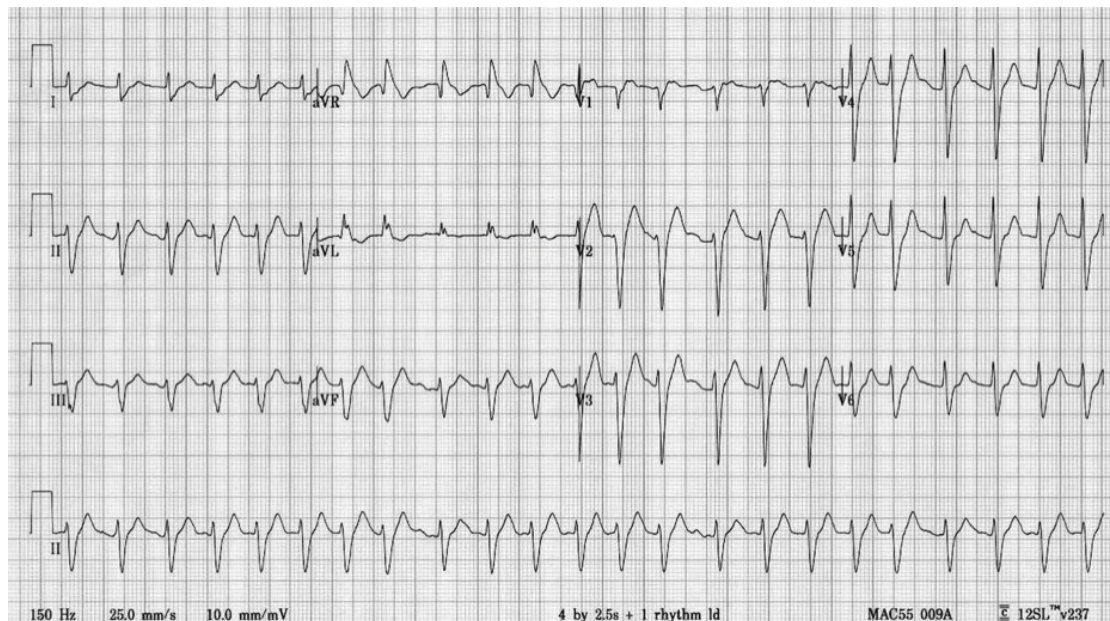


SAQ 2

A 46 year old man is brought to your emergency department by ambulance following an overdose of unknown medications. He has had a brief generalized seizure en route. On arrival his observations are:

GCS	12		
BP	85/60	mmHg	
Temperature	37.0	°C	
O ₂ Saturation	100	%	on 8 L/min O ₂



Describe the ECG (5 marks)

- Rate 150, Axis normal, Rhythm irregular broad complex tachycardia, R Prime AVR ,
- Interpretation – consistent with Na Channel Blockade
- QRS upper limit or slightly prolonged,
- QT almost half the RR along with examples gave extra marks

What are the first 5 things you would do to manage the patient?

- Mx in resus area, team approach, delegate care of rest of department
- treatment with NaHCO₃ (50 ml 8.4%, repeat to achieve pH 7.5 and QRS <120ms)
- Fluid Mx for hypotension (1litre 0.9% NaCl stat and repeat if necessary to achieve MAP > 65mmHg)
- Benzodiazepines for seizures (appropriate dose for agent chosen)
- RSI and ventilation to low normal CO₂