

The Prince Charles Hospital
The Royal Brisbane & Women Hospital
Redcliffe Hospital
Caboolture Hospital

Facility/hospital/clinical service name

Metro North Hospitals ACEM Fellowship Trial Examination

2017.1

Short Answer Questions

SAQ Paper

Props Booklet

This paper is property of Metro-north Emergency Departments. It should not be distributed or published without previous permission of the DEMA team please

ACEM Fellowship Trial Examination

2017.1

Short Answer Questions

SAQ Paper

Props Booklet

Examination time: 180 Minutes

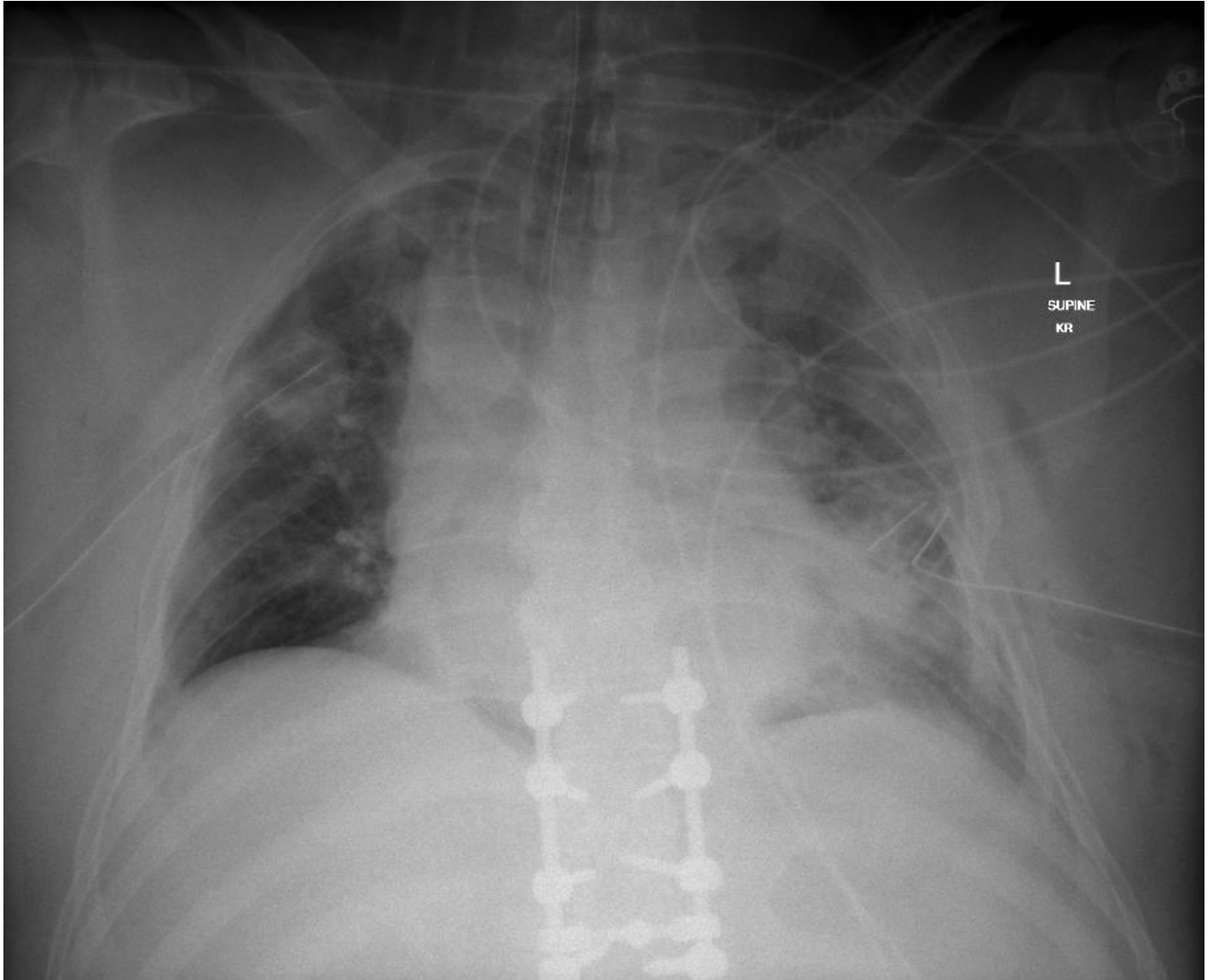
Direction to Candidates:

- 1- All questions must be attempted
- 2- Answer each question in the space provided
- 3- Enter your name for each question
- 4- This paper has been designed into 3 parts, each part required to be completed in 60 minutes

Booklet one:	SAQ 1-9
Booklet two:	SAQ 10-18
Booklet three:	SAQ 19-27
Props Booklet:	All props

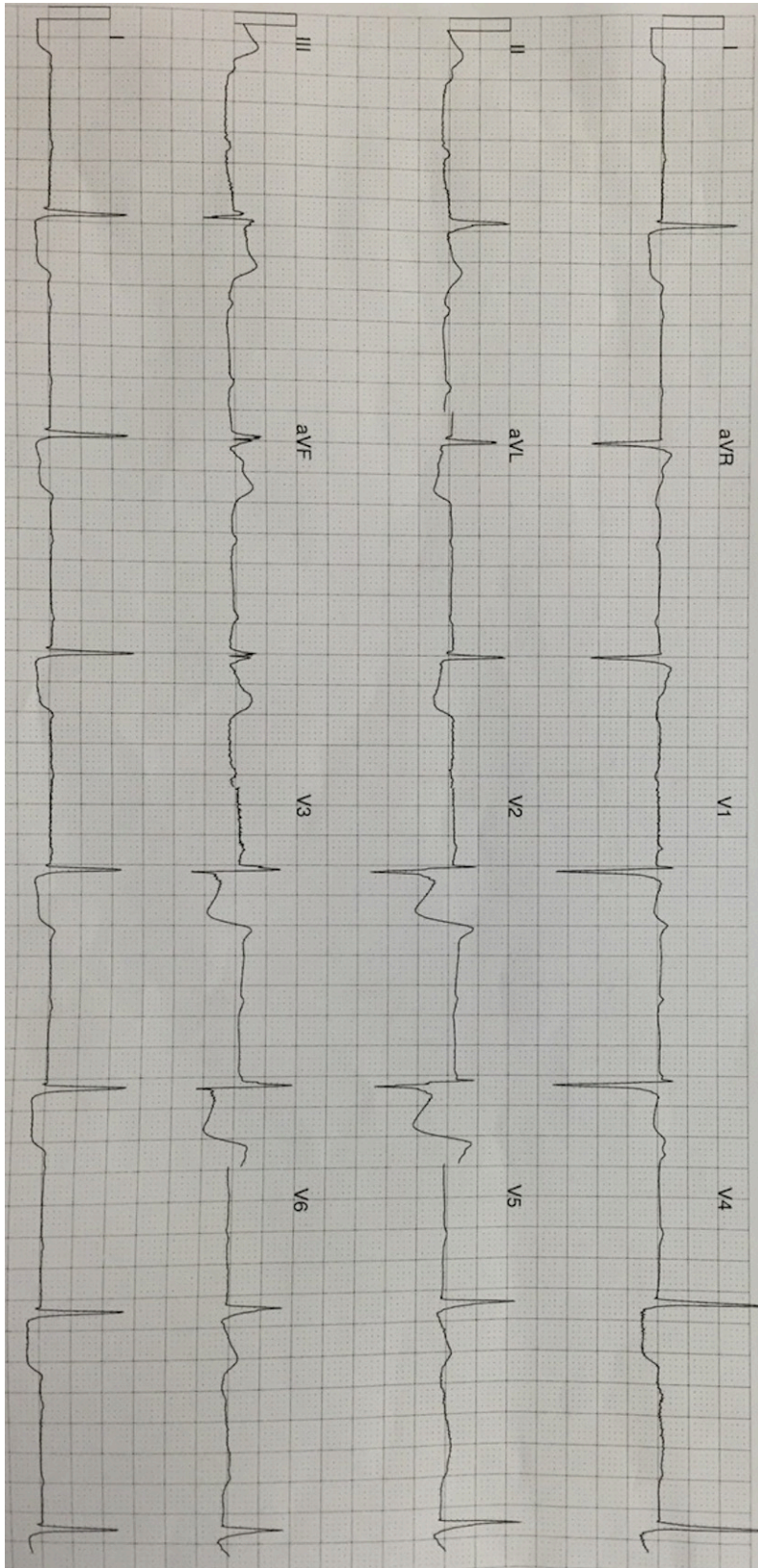
This paper is property of The Prince Charles, The Royal Brisbane & Women, Redcliffe and Caboolture Emergency Departments and should not be distributed or published without permission of the DEMENT teams.

SAQ 4:



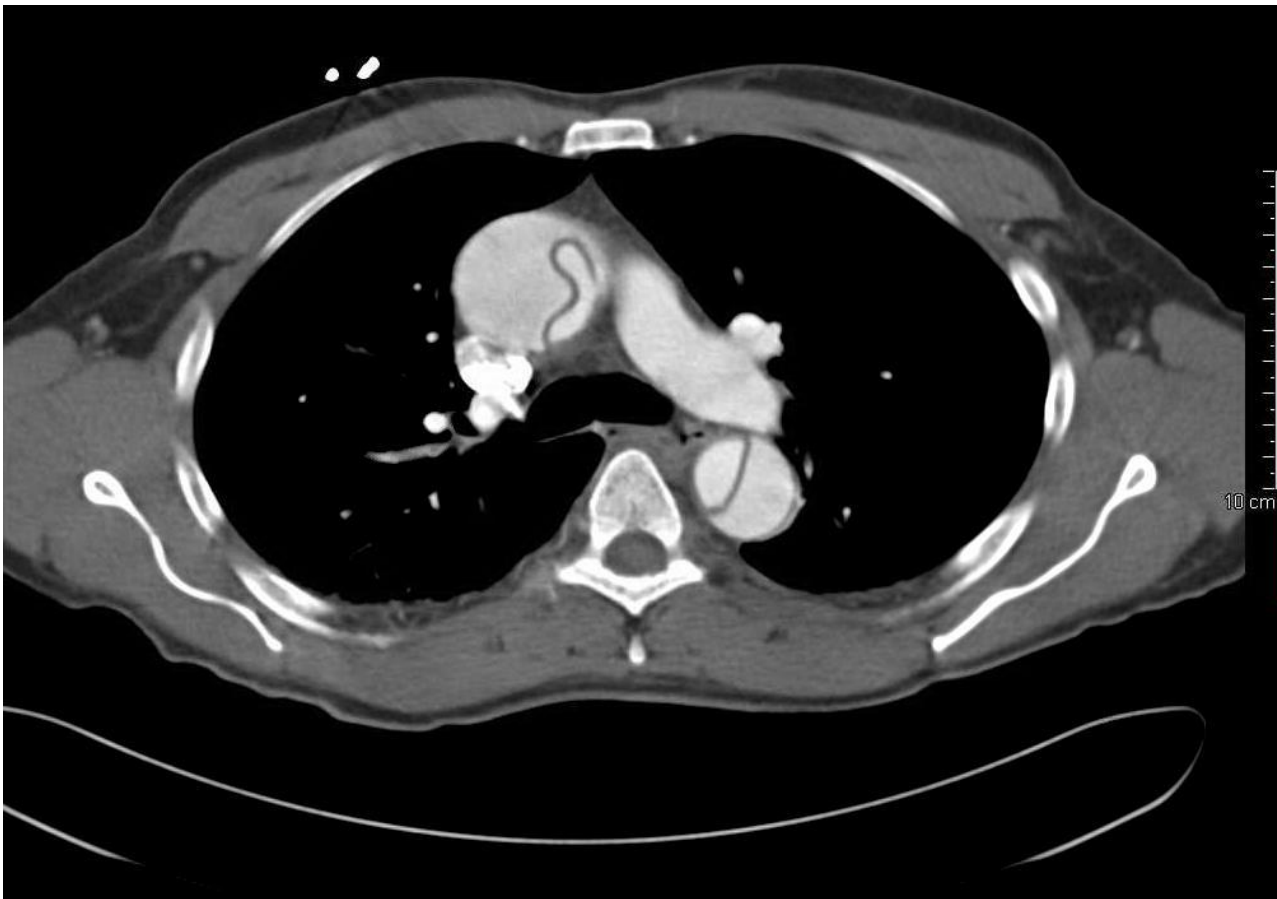
This paper is property of The Prince Charles, The Royal Brisbane & Women, Redcliffe and Caboolture Emergency Departments and should not be distributed or published without permission of the DEMENT teams.

SAQ 5:



This paper is property of The Prince Charles, The Royal Brisbane & Women, Redcliffe and Caboolture Emergency Departments and should not be distributed or published without permission of the DENT teams.

SAQ 7:



This paper is property of The Prince Charles, The Royal Brisbane & Women, Redcliffe and Caboolture Emergency Departments and should not be distributed or published without permission of the DEMENT teams.

SAQ 9:



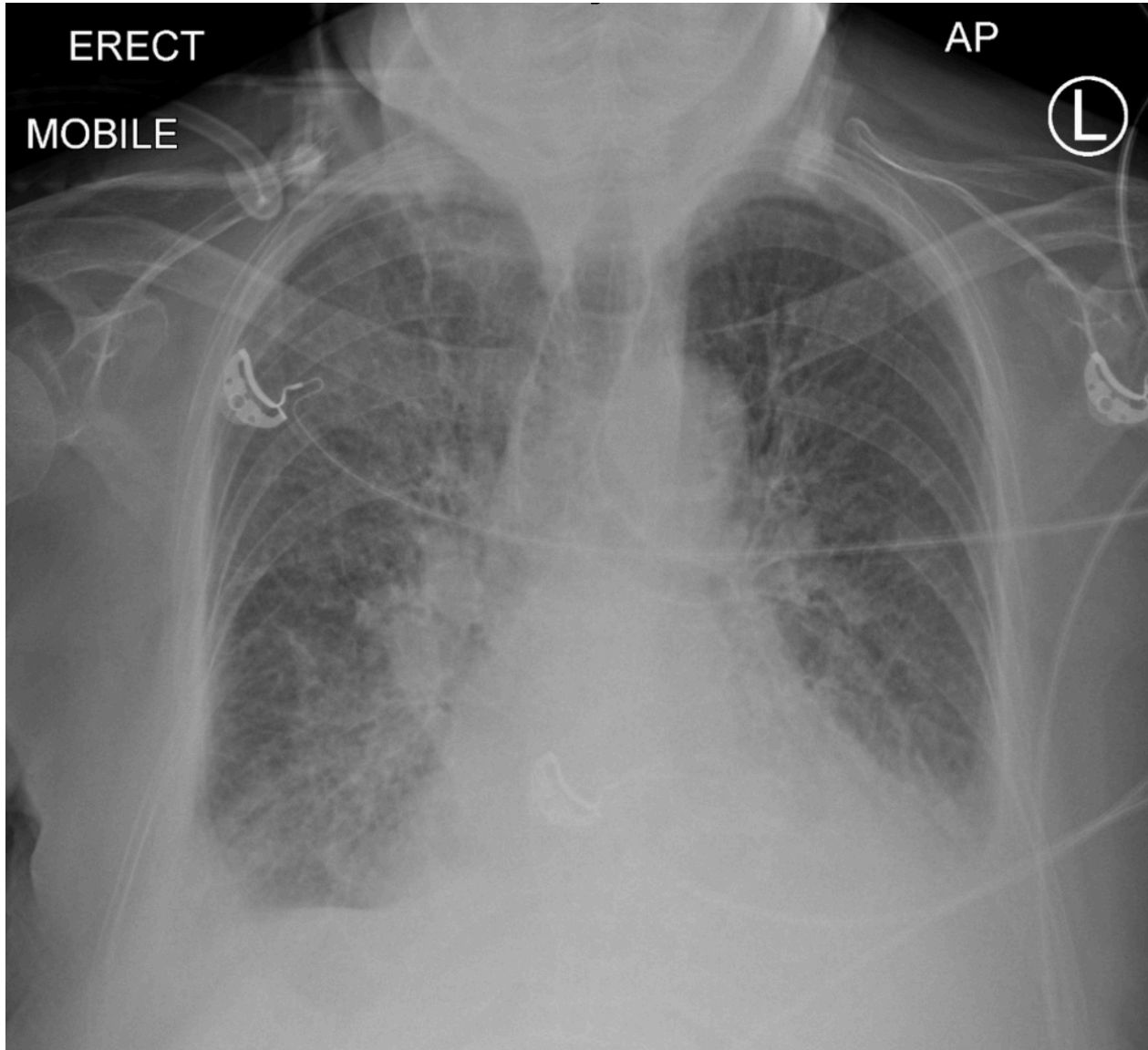
This paper is property of The Prince Charles, The Royal Brisbane & Women, Redcliffe and Caboolture Emergency Departments and should not be distributed or published without permission of the DEMENT teams.

SAQ 10:



This paper is property of The Prince Charles, The Royal Brisbane & Women, Redcliffe and Caboolture Emergency Departments and should not be distributed or published without permission of the DENT teams.

SAQ 12:



This paper is property of The Prince Charles, The Royal Brisbane & Women, Redcliffe and Caboolture Emergency Departments and should not be distributed or published without permission of the DENT teams.

SAQ 20:



This paper is property of The Prince Charles, The Royal Brisbane & Women, Redcliffe and Caboolture Emergency Departments and should not be distributed or published without permission of the DENT teams.

SAQ 21:



This paper is property of The Prince Charles, The Royal Brisbane & Women, Redcliffe and Caboolture Emergency Departments and should not be distributed or published without permission of the DEMENT teams.

SAQ 22:



This paper is property of The Prince Charles, The Royal Brisbane & Women, Redcliffe and Caboolture Emergency Departments and should not be distributed or published without permission of the DEMENT teams.

SAQ 24:



This paper is property of The Prince Charles, The Royal Brisbane & Women, Redcliffe and Caboolture Emergency Departments and should not be distributed or published without permission of the DENT teams.

SAQ 25:



This paper is property of The Prince Charles, The Royal Brisbane & Women, Redcliffe and Caboolture Emergency Departments and should not be distributed or published without permission of the DENT teams.

SAQ 26:



This paper is property of The Prince Charles, The Royal Brisbane & Women, Redcliffe and Caboolture Emergency Departments and should not be distributed or published without permission of the DENT teams.

SAQ 27:



This paper is property of The Prince Charles, The Royal Brisbane & Women, Redcliffe and Caboolture Emergency Departments and should not be distributed or published without permission of the DEMENT teams.