

Week 2 Q

1. List the causes of cardiac arrhythmias?

2. List the differences between VT (common) and SVT with aberrant conduction (rare) on ECG?

3. What are the settings for electrical cardioversion for the following:

VT without pulse

VT with pulse

Adult:

Children:

4. What are the pharmacological treatment for a patient with conscious VT?

5. What is the treatment of choice in a patient with VT due to :

Chloral hydrated toxicity:

TCA toxicity

Hypothermia

Stimulants

6. What are the risk factors for Torsades de pointes (TdP)?

7. List the potential causes of prolonged QT?

8. List your management steps for TdP

9. What are the common cardiac causes for sudden death

10. Which channelopathy causes Brugada syndrome?

11. List the ECG changes of Brugada syndrome?

12. What is the confirmatory test and the treatment for Brugada syndrome?

13. What is the pathophysiology of Arrhythmogenic right ventricular cardiomyopathy ?

14. What are the ECG characteristics of Arrhythmogenic right ventricular cardiomyopathy ?

15. What are the potential causes for atrial fibrillation or flutter?

16. Which patients are at risk of haemodynamic instability if they go into AF/AFlut?

17. What are the four potential treatment strategies for AF/AFlut?

18. What are the indications for observation strategy in a patient with new AF ?

19. In new AF what is the potential percentage of patients revert to SR within:

24h

48h

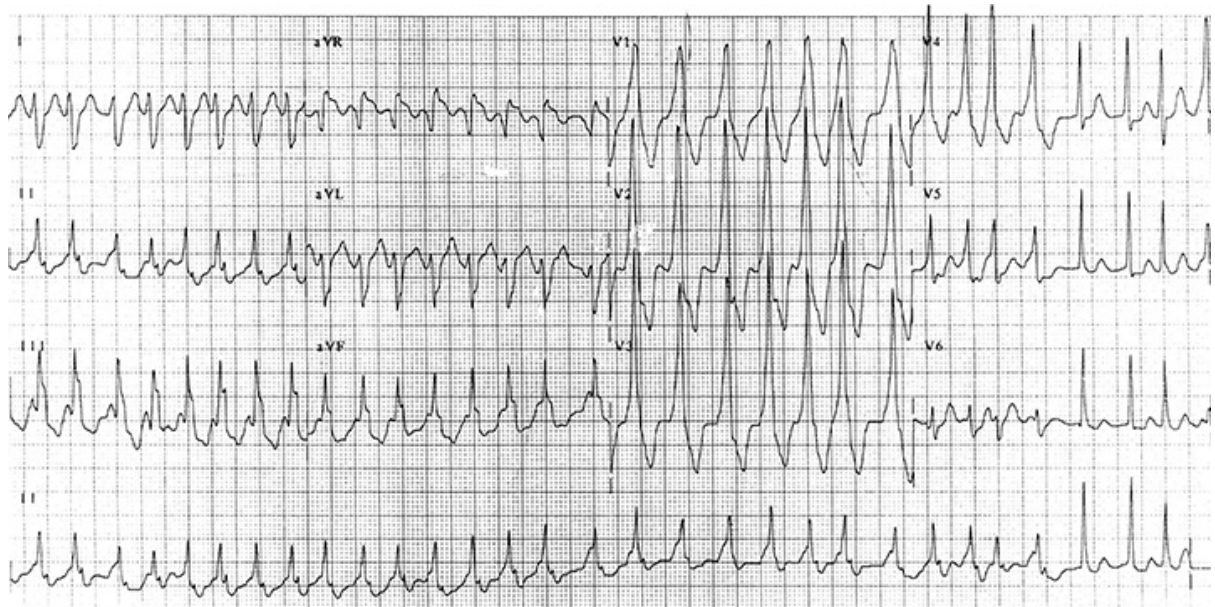
20. List the rhythm control options for a patient in AF?

21. What is the potential risk of stroke in a patient in AF?

22. List the treatment options for SVT?

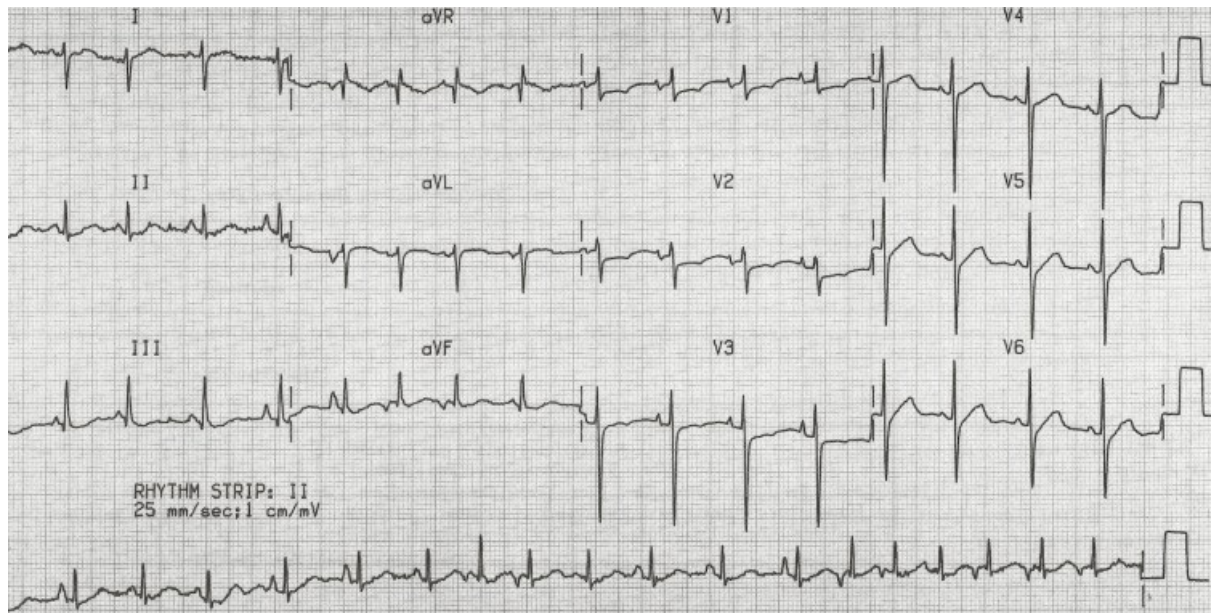
23. What are the different types of SVT with accessory pathway?

24. What are the indicated and contraindicated treatment options for the following arrhythmia?



25,What are the landmarks for carotid sinus for carotid sinus massage? And which side you start first?

26.What is the abnormality and what are the potential causes?



27. What is definition and What are the differential diagnosis for sinus bradycardia?

28. What are the correct position of pads, in:

Standard:

AP:

29. What are the Indications for transcutaneous emergency pacing?

30. What is the indication of asynchronous transcutaneous pacing?

**31. What is the indication of synchronous transcutaneous pacing?
And why its used?**

32. What is the average mA to achieve mechanical capture by transcutaneous pacing?

33. What are the indications for permanent pacing in adults?

34. List the potential complications of permanent pacemakers?

35. List the important potential causes for syncope that may be identified on ECG?

36. What are the anatomical landmarks for I/O assess for proximal tibia?

37. Which I/O site can be used for faster infusion rate?

38. How many different needles there are for EZ-IO powered drill set?

39. What is the normal value for CVP?

In hypovolemia?

In hypervolemia?

40. What are the causes of elevation in CVP?

41. What are the normal saline composition and the osmolality?

42. Hartmann's solution ingredients and osmolality?

43. How much dextrose exist one lit of 5% Dextrose?

44. How many mmol of ionised Ca in :

10 ml of CaCl₂ 10%:

10 ml of Ca gluconate 10%:

45. What are the four types of Pathophysiologically based shock? With an example of each?

46. What is the definition of massive blood transfusion?

47. What is the blood volume in adult, children and neonates?

48. What are the targets in massive blood transfusion?

49. What is the transfusion ratios in massive blood transfusion?

50. What are the complications for blood transfusion?

51. What is the target BP in Hypotensive resuscitation?

52. What are the Contraindications to hypotensive resuscitation ?

53. What is the dose for FFP?

54. What clotting factors are present in Prothrombin complex concentrate (PCC)(Prothrombinex) and what is the dose?

55. What is the main indication for Cryoprecipitate and what is the usual dose?

56. What was the result of the PATCH study regarding the use of platelets and atraumatic spontaneous intracranial haemorrhage?

57. What was the result of CRASH 2 study regarding the use of TXA in trauma patients?

58. What is the dose and timing of the TXA infusion in hypotensive trauma patient due to haemorrhage?

59. What SOFA score stand for?

60. What are the elements of qSOFA and what is the significant of presence of two or more of them?

61. What are the 'Sepsis Six'?

62. What are the empirical antibiotic choice in community acquired sepsis in immunocompetent adults where the source is unknown?

63. What are the empirical antibiotic choice community acquired sepsis in children < 2 months of age and meningitis not excluded?

64. What are the empirical antibiotic choice community acquired sepsis in children > 2 months of age and critically unwell?

65. List the techniques to prevent secondary injury?

66. What are the treatment options for increased ICP?