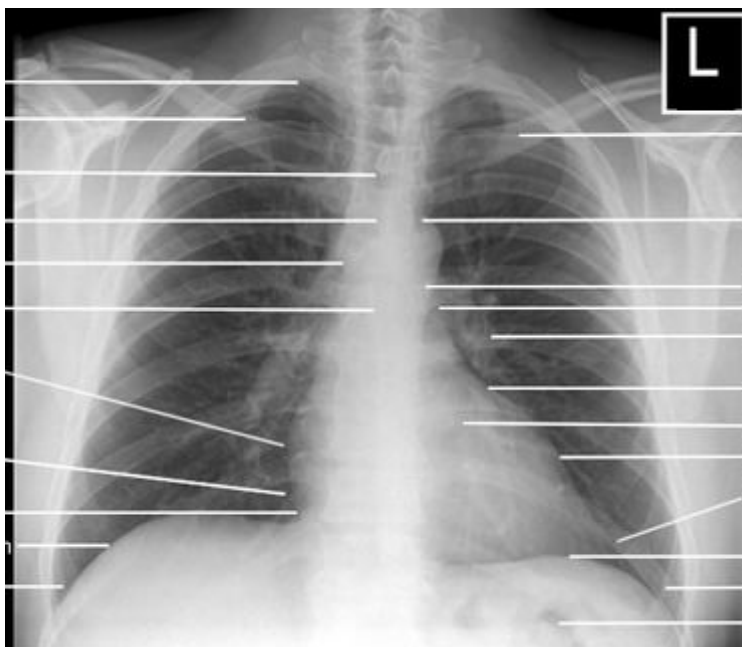


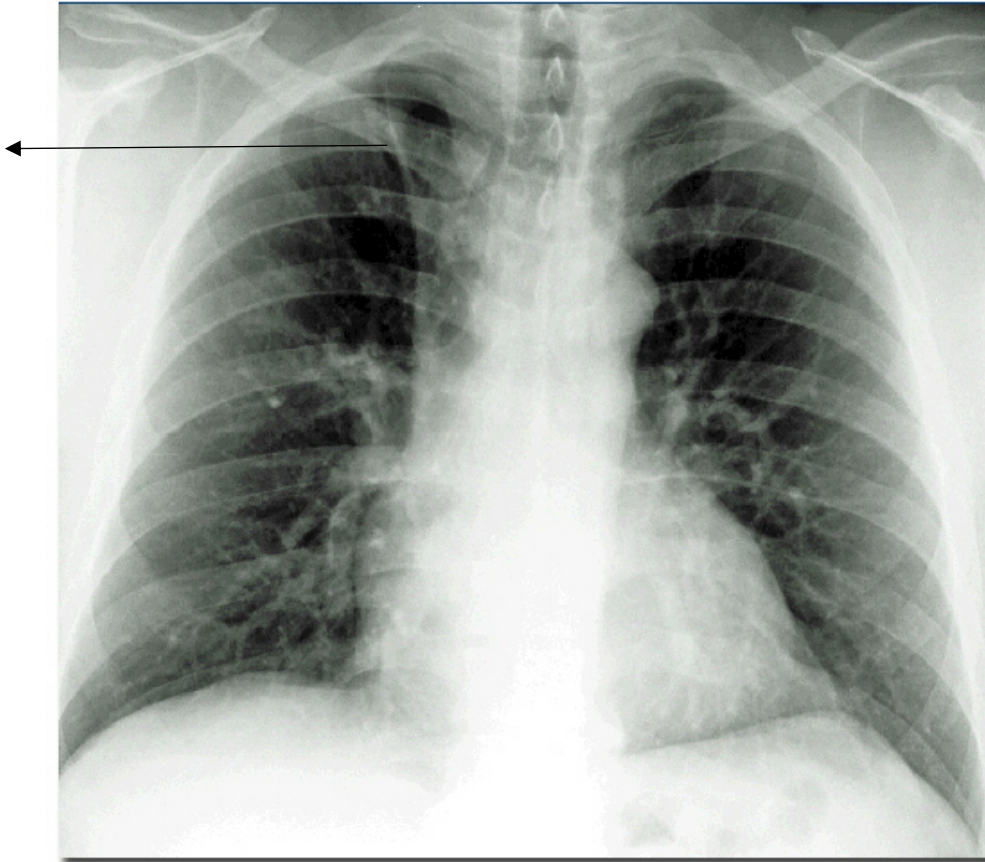
Respiratory disorders
Shortness of breath Asthma
Assessment of asthma Acute asthma management Bronchodilator agents
Management of life threatening asthma
Long term asthma management
Chronic obstructive pulmonary disease
Assessment of COPD
Management of COPD
Bronchiectasis
Home oxygen therapy
Tracheobronchial foreign bodies in children
Haemoptysis

1. At what level does usually lung finishes?

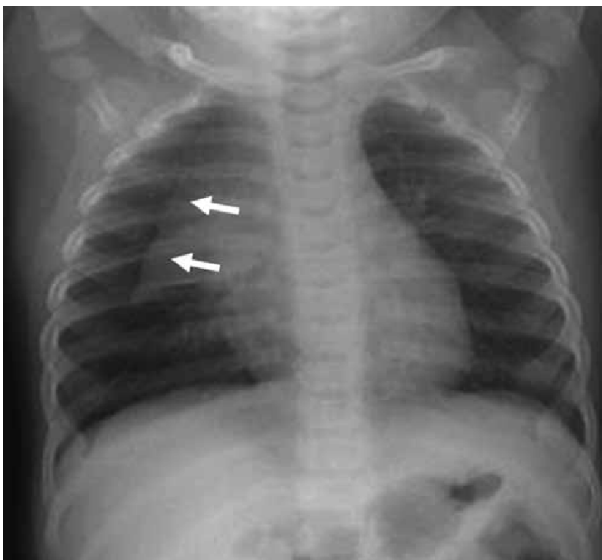
2. Name the following structure on a normal chest Xray:



3. What is the following structure?



4. What is the following opacification in this 6 months old child?



5. What are the potential causes of abscess in the lung?

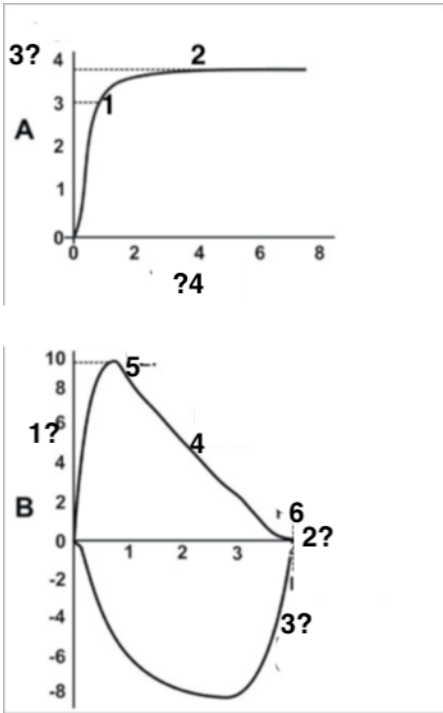
6. What is the estimated normal PEFr for an adult?

7. What is FEV₁ and what is the normal estimated value for FEV₁ for adult female and male?

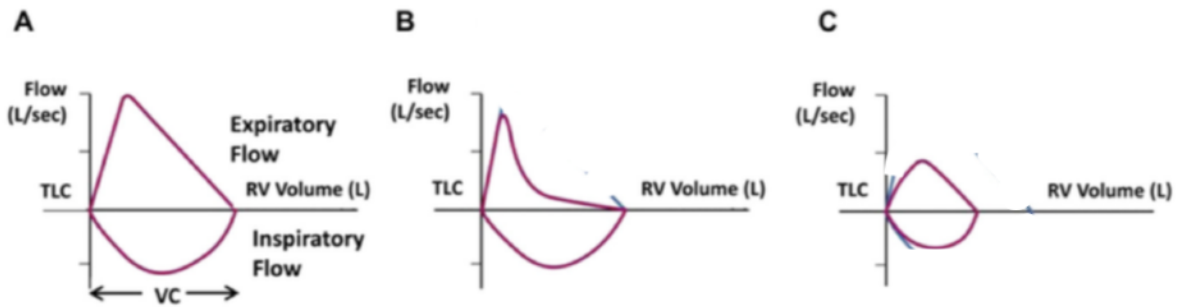
8. What is forced vital capacity?

9. What is the normal range for FEV₁/FVC?

10. Label the following diagrams from spirometry ?



11. What is the abnormality in each of the following diagrams?



12. By definition how much reversible airway obstruction after bronchodilator makes the diagnosis of asthma likely?

13. What are the important points in history in a patient with asthma?

14. What are the risk factors for potentially fatal asthma?

15. What are the features that are used to assess the severity of asthma?

16. What are the features of severe asthma?

17. What are the complications of asthma and also the complications of treatment of asthma?

18. What investigations are needed in mild-to-moderate asthma in the majority of cases?

19. What is the gold standard for assessing airflow obstruction in asthma?

20. List the steps to use **Peak flow meter** ?

21. What are the PaCO₂ and PaO₂ in a ABG, in an asthmatic patient that indicates life threatening asthma?

22. List all the potential medications that can be used for acute management of asthma attack with route and dose in adults and children?

23. What are the important points in action plan for an asthmatic patient?

24. What are the differences in management of asthma in pregnant and non-pregnant patients?

25. What is the technique to use Spacer for bronchodilators?

26. 6 puffs of salbutamol into a spacer equals to how many mg of salbutamol via nebuliser?

27. List the management of life-threatening asthma?

27. What are the initial ventilator settings for intubated asthmatic patient?

28. List the techniques to reduce end expiratory pressure in intubated and ventilated asthmatic patient?

29. List the steps in troubleshooting for sudden deterioration of intubated/ventilated asthmatic patient?

29. List the potential causes of cardiac arrest in an asthmatic patient?

30. List your management of PEA arrest in an asthmatic patient?

30. List your treatment of acute exacerbation of COPD?

31. What is the cause of hyperoxic hypercarbia in a chronic CO₂ retainer COPD patient?

32. How much blood in the event of alveolar bleeding can cause asphyxiation?

33. What are the common causes of massive haemoptysis?

34. List the management of massive haemoptysis?