

SUMMARY

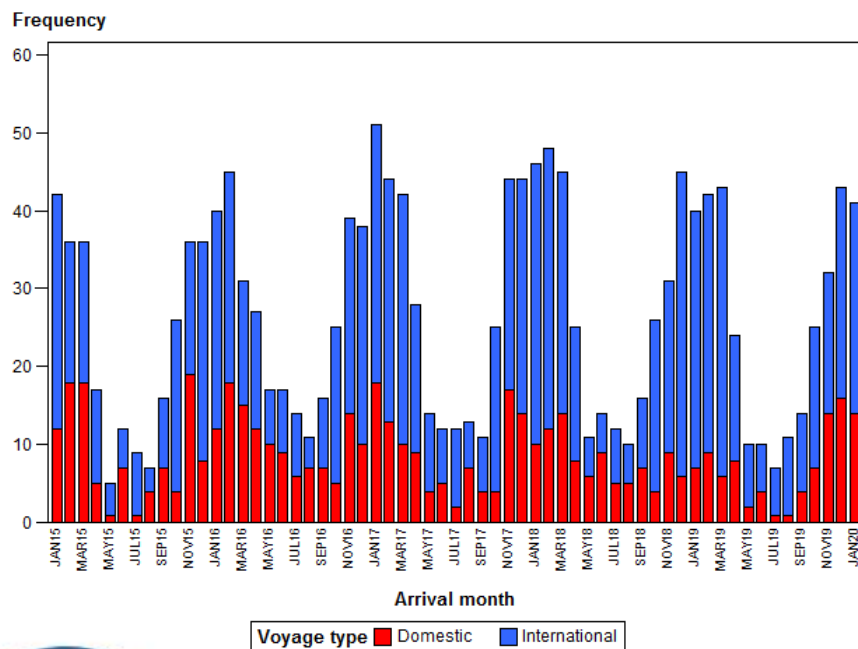
- In January, 41 voyages arrived in Sydney bringing almost 150,000 people.
- The average rate per cruise of gastrointestinal illness on board was low, at 0.1% or 1 case per 1000 people. The average weekly rate of gastro on ships decreased.
- The average rate per cruise of influenza-like illness was very low, at 0.08% or 0.83 cases per 1000 people.
- One outbreak* with influenza-like illness was reported on a cruise ship during January. The outbreak affected 1.35% of the ship's population.
- No outbreaks of gastrointestinal illness were reported in January.

Illness outbreaks* reported by cruise ships arriving in Sydney, 2020

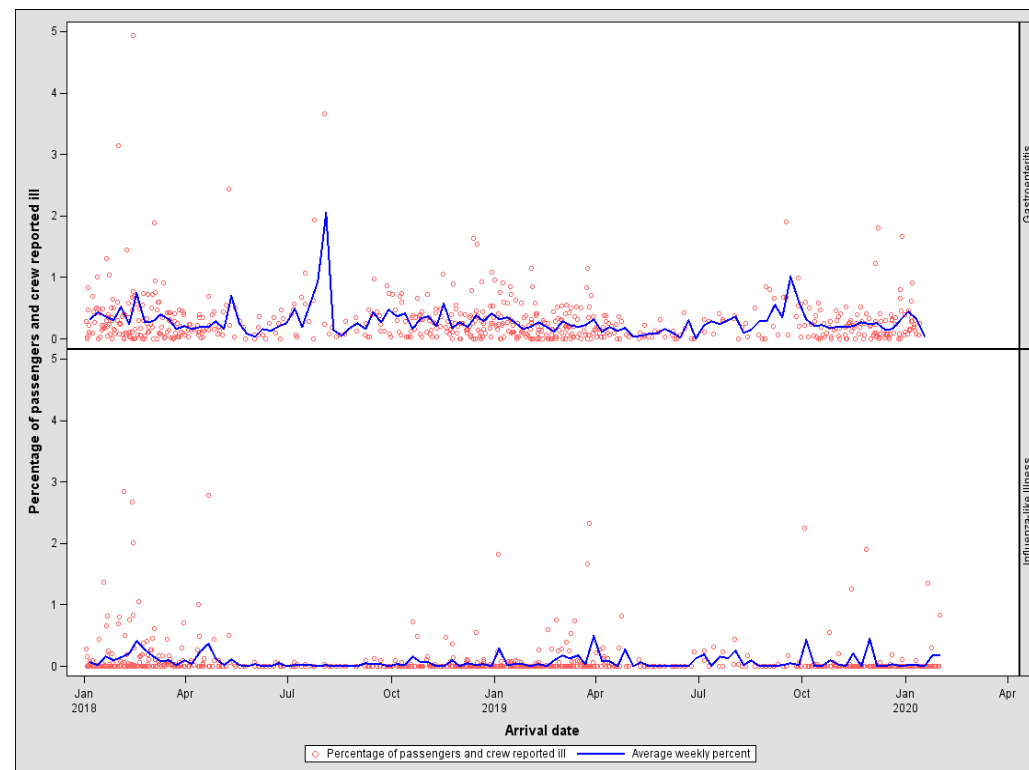
Cause	Number of outbreaks* reported	Total number of voyages
Influenza	1	41
Gastroenteritis	0	41

*The Public Health Unit investigates reports of illness in greater than 1% of a ships population. An outbreak affecting greater than 3% triggers a notification from the ADWR to a human biosecurity officer.

Number of cruise ship arrivals in the Port of Sydney Jan 2015-Jan 2020



Rate per cruise and average weekly rate of gastroenteritis and influenza on cruise ships Jan 2018-Jan 2020



CONTACT US
 South Eastern Sydney Public Health Unit
 T: 61 2 9382 8333
[Website](#) | [Facebook](#) | [Twitter](#) | [Email](#)

Notes:
 This report is prepared using the Australian Department of Agriculture and Water Resource's [Pre-Arrival Reports](#) submitted by the masters or their agents for cruise ships entering the Port of Sydney. Cruise ship masters are required by Australian quarantine law to report [all prescribed symptoms and diseases \(Biosecurity Act 2015\)](#). The graphs summarise the number of voyages and the reported proportion of acute gastrointestinal and influenza-like illness for each voyage, based on presentations to ships' medical clinics. Additional data that is collected by the South Eastern Sydney Public Health Unit's Cruise Ship Program during routine investigation of outbreaks on board ships is also included. For further information about this report or the Program please contact us.