

SYDNEY CRUISE SHIP HEALTH REPORT

February 2020



Health
South Eastern Sydney
Local Health District

SUMMARY

- In February, 45 voyages arrived in the Port of Sydney bringing almost 140,000 people.
- The average rate per cruise of gastrointestinal illness was 0.19% or 1.9 case per 1000 people.
- The average rate per cruise of influenza-like illness remained generally low at 0.17% or 1.7 cases per 1000 people, but higher than the previous month. This can likely be attributed to better ascertainment and reporting related to COVID-19 screening.
- One outbreak* of influenza-like illness was reported in February. The outbreak affected 1.22% of the ship's population. Influenza A was detected in 48 people.
- One outbreak of norovirus gastroenteritis was reported, which affected 2.2% of the ship's passengers.

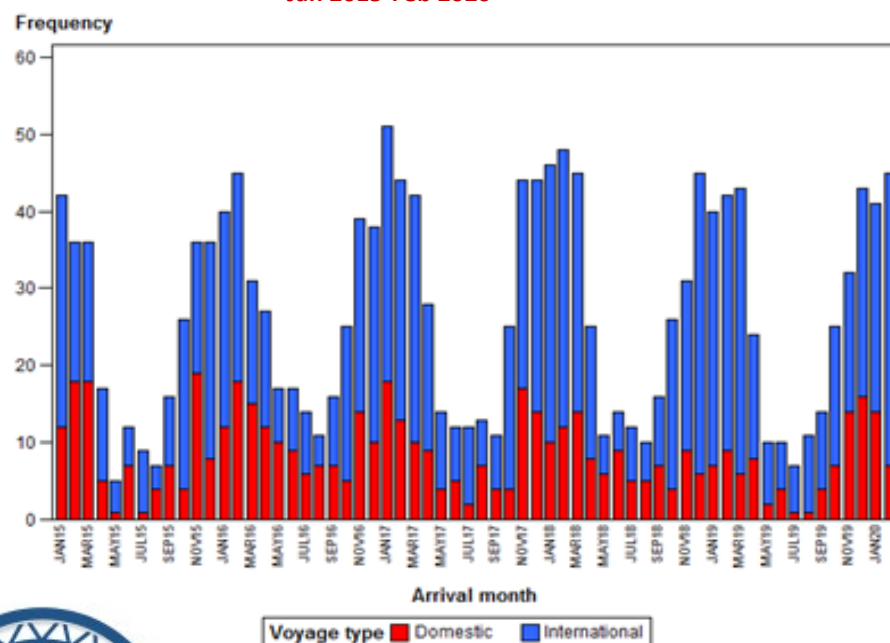
NSW Health has instituted a protocol for routine pre-arrival COVID-19 risk assessment of all cruise ships arriving in NSW ports. Cruise ships are required to provide standardised information from 48 hours before arrival. For more information about this process, please email SESLHD-PublicHealthUnit-CruiseShipSurv@health.nsw.gov.au

Illness outbreaks* reported by cruise ships arriving in Sydney, 2020

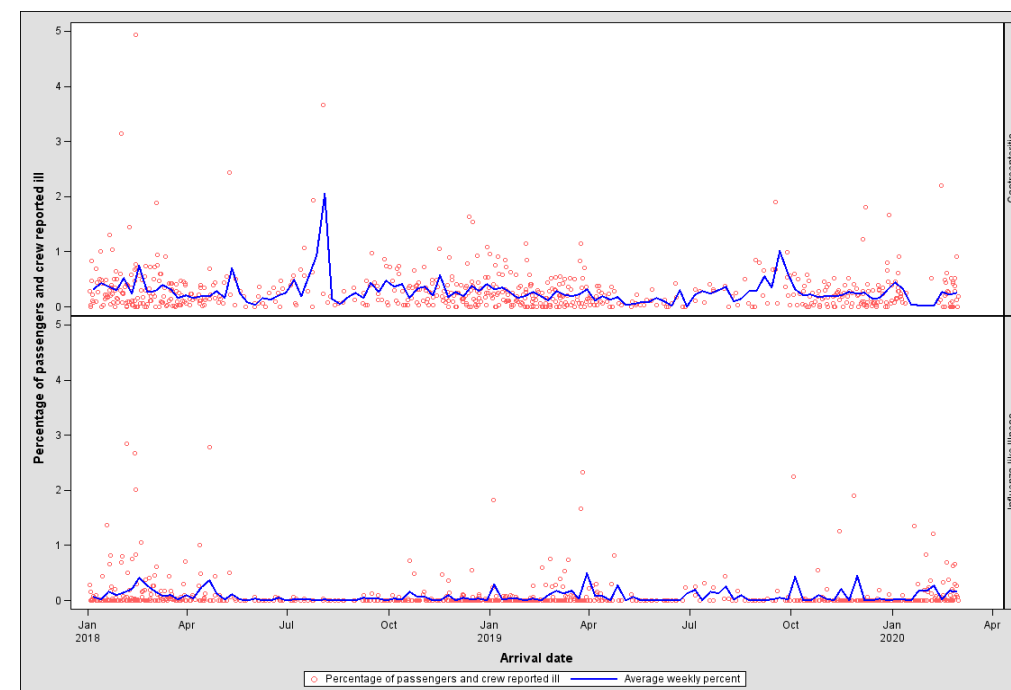
Cause	Number of outbreaks* reported	Total number of voyages
Influenza	2	86
Gastroenteritis	1	86

*The Public Health Unit investigates reports of illness in greater than 1% of a ship's population. An outbreak affecting greater than 3% triggers a notification from the ADWR to a human biosecurity officer.

Number of cruise ship arrivals in the Port of Sydney Jan 2015-Feb 2020



Rate per cruise and average weekly rate of gastroenteritis and influenza on cruise ships Jan 2018-Feb 2020



CONTACT US

South Eastern Sydney Public Health Unit

T: 61 2 9382 8333

[Website](#) | [Facebook](#) | [Twitter](#) | [Email](#)

Notes:

This report is prepared using the Australian Department of Agriculture and Water Resource's [Pre-Arrival Reports](#) submitted by the masters or their agents for cruise ships entering the Port of Sydney. Cruise ship masters are required by Australian quarantine law to report [all prescribed symptoms and diseases \(Biosecurity Act 2015\)](#). The graphs summarise the number of voyages and the reported proportion of acute gastrointestinal and influenza-like illness for each voyage, based on presentations to ships' medical clinics. Additional data that is collected by the South Eastern Sydney Public Health Unit's Cruise Ship Program during routine investigation of outbreaks on board ships is also included.

For further information about this report or the Program please contact us.