



Key messages for local services

New cases: In the 7 days to 9 December there were **5,112** new COVID-19 cases notified in SESLHD residents, which is a **0.2% increase** compared to the previous report. COVID-19 notifications continue mainly in adults, with a higher proportion amongst women. The number of influenza cases remains low with only 52 cases.

Deaths: There was one COVID-19 related death in the past 7 days among SESLHD residents. The total number of COVID-19 related deaths in SESLHD is 685.

Aged & Disabled Care Facilities: Thirty aged care facilities are under surveillance following recent COVID-19 exposure, with 18 experiencing an outbreak. There is one disability service that is currently experiencing a COVID-19 outbreak.

Boarding Houses & Temporary Accommodation: There are no temporary accommodation facilities with recent exposures.

Testing: COVID-19 PCR testing rates decreased across all LGAs and age groups again this week. The weekly positivity rate **increased** from 23.6% week ending 2 December to 26.1% week ending 9 December; all LGAs had increases in positivity, except for Woollahra. PCR tests represented 66% of all notifications.

As of 3 December, the COVID-19 variants that were dominant in the winter wave (BA.4 and BA.5) now make up less than 25% of circulating variants. Influenza activity is currently low, but vaccination is recommended if you are travelling to the northern hemisphere.

Data summary

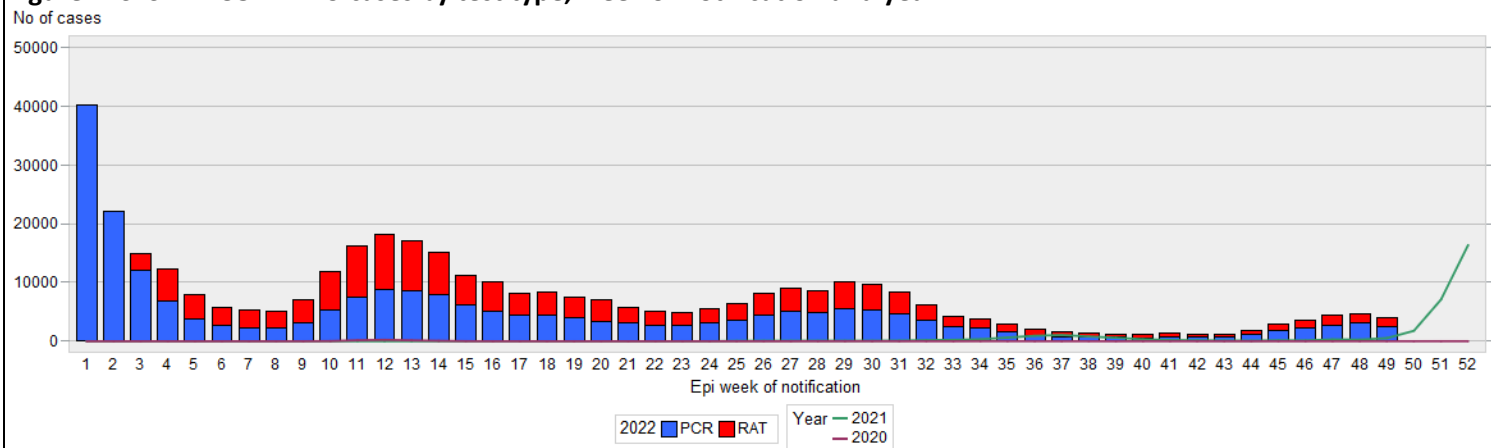
1. Case numbers

Table 1: SESLHD COVID PCR and RAT positive cases by LGA of residence and notification week

LGA	7 days*	14 days	28 days	Total	7 day crude rate per 100,000*	Total crude rate per 100,000*
Bayside	857	1,662	2,951	73,435	431	36,913
Georges River	937	1,836	3,172	68,080	580	42,150
Randwick	851	1,618	2,960	70,952	553	46,081
Sutherland Shire	1,522	2,831	4,911	110,121	636	46,033
Sydney	383	710	1,280	34,067	485	43,143
Waverley	333	634	1,125	32,774	454	44,710
Woollahra	229	462	881	23,422	399	40,832
SESLHD	5,112	9,753	17,280	412,851	527	42,546

*7day reporting period is now 2 December to 9 December 2022, due to changes in data availability

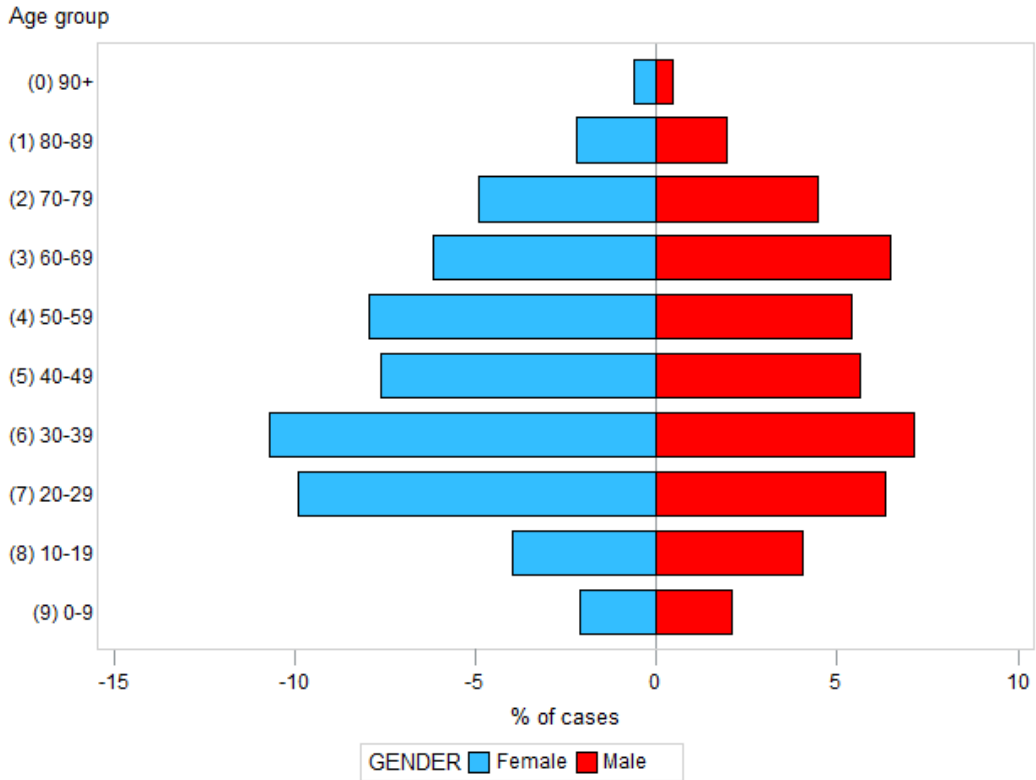
Figure 1: SESLHD COVID -19 cases by test type, week of notification and year*



*Data for week ending 9 December is incomplete due to change in data availability

2. Demographic Data

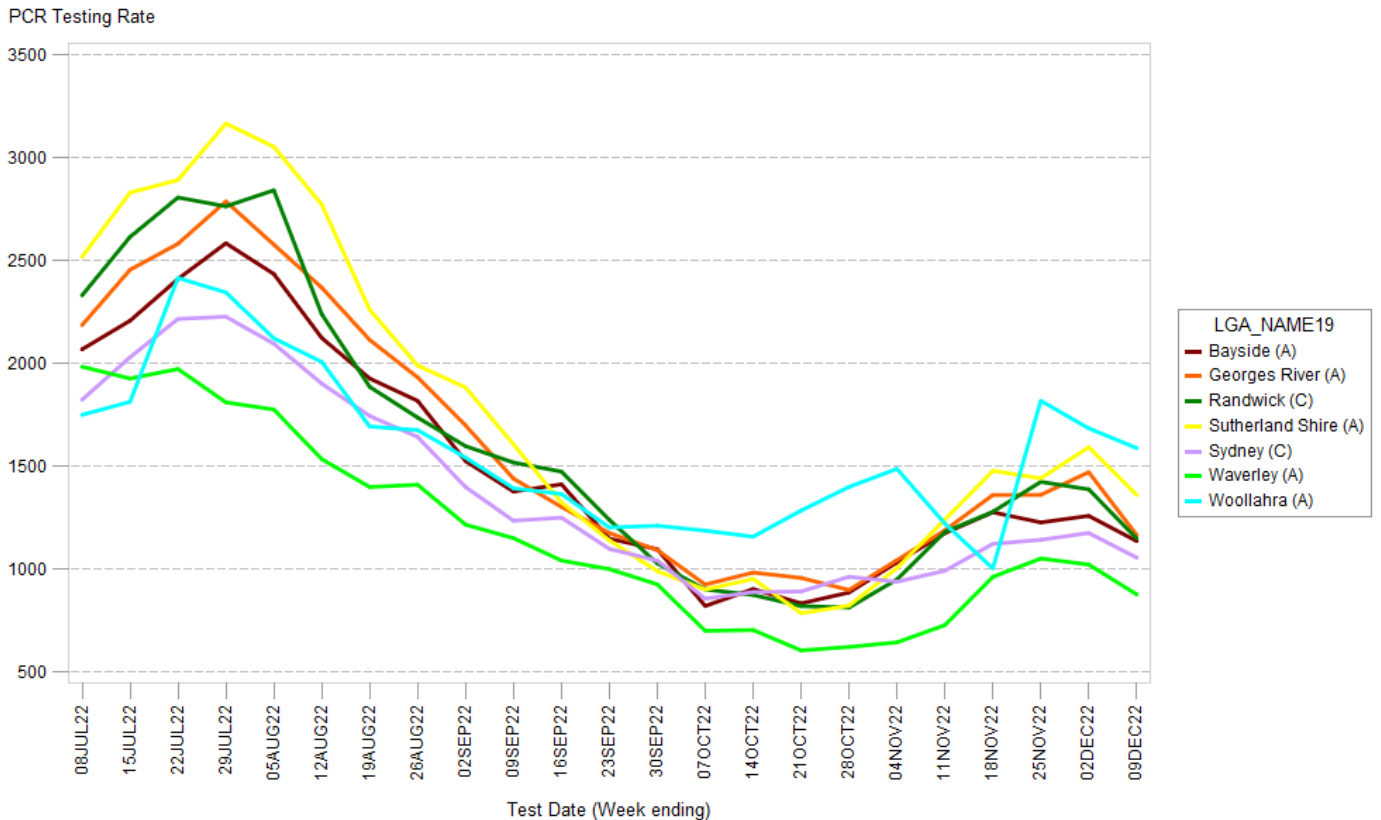
Figure 2: Percentage of COVID cases in the last 7 days by age group and gender*



*7day reporting period is now 2 December to 9 December 2022, due to changes in data availability

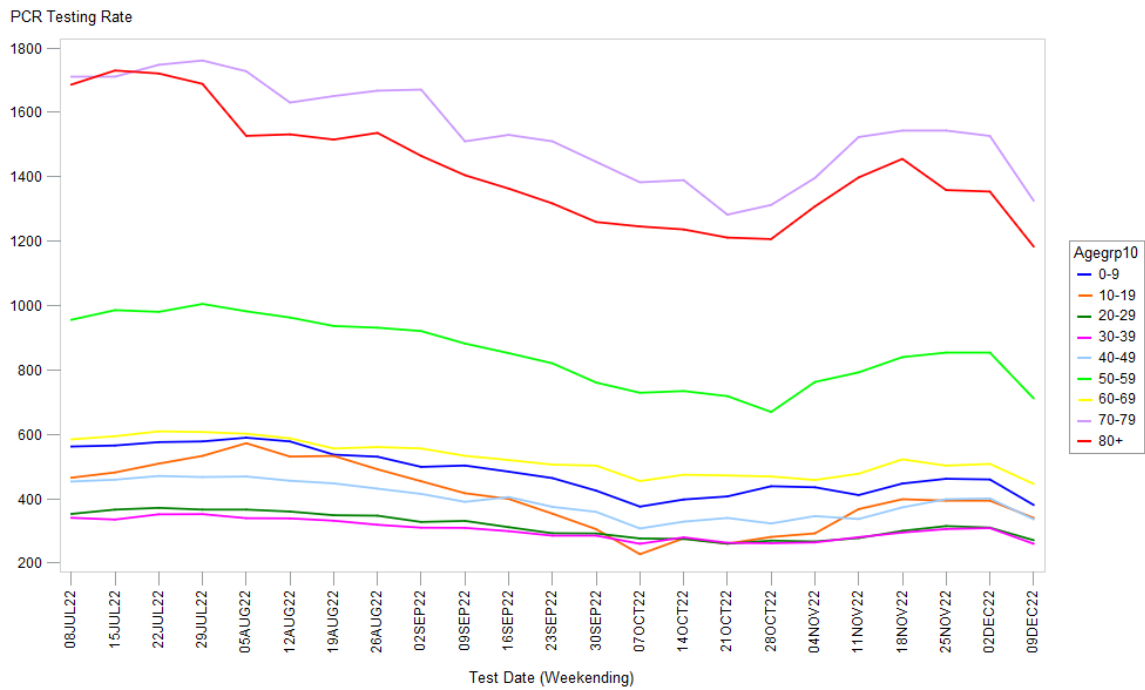
3. Testing Data

Figure 3: COVID-19 PCR weekly testing rate per 100,000 population and LGA of residence since July 2022*



*Data for week ending 9 December is incomplete due to change in data availability

Figure 4: COVID-19 weekly testing rates per 100,000 population by age group since July 2022*



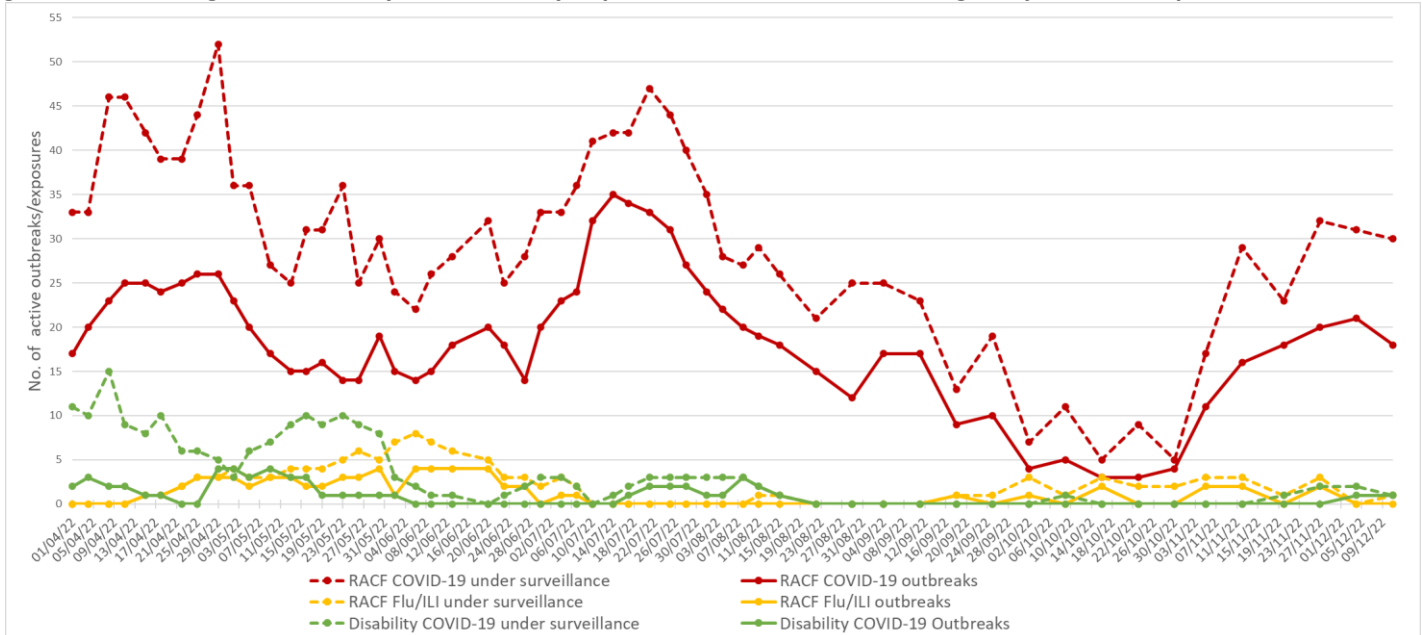
*Data for week ending 9 December is incomplete due to change in data availability

Table 2: COVID-19 weekly PCR positivity rate by LGA of residence

LGA	Week ending December 2 positivity rate (%)	Week ending December 9 positivity rate (%)
Bayside	27.1	27.5
Georges River	27.9	33.4
Randwick	22.4	25.3
Sutherland Shire	23.0	25.5
Sydney	24.4	26.2
Waverley	20.7	26.8
Woollahra	12.4	11.9

4. Residential facility outbreaks reported to the Public Health Unit

Figure 5: SESLHD aged care facility and disability exposures and outbreaks managed by the PHU, April to 12 Dec 2022



NB. 'Flu/ILI' outbreaks include outbreaks caused by RSV.

5. Emergency department presentations

Table 3: Emergency presentations within SESLHD weekending 11 December

Diagnosis / Category	Trend since last week	Compared to average for time of year (2017-2021)	Comment
Respiratory, fever and unspecified infection presentations	Steady	Above	1.4x higher than usual
Influenza like illness (ILI) presentations	Steady	Steady	
Coronaviruses/SARS	Steady	N/A	
Bronchiolitis presentations	Higher	Above	2.0x higher than last week 1.3x higher than usual

Data is from NSW Public Health Rapid Emergency Department Surveillance System. Increase or decrease indicates change >20% compared to previous week

Figure 6: Presentations to ED due to influenza like illness

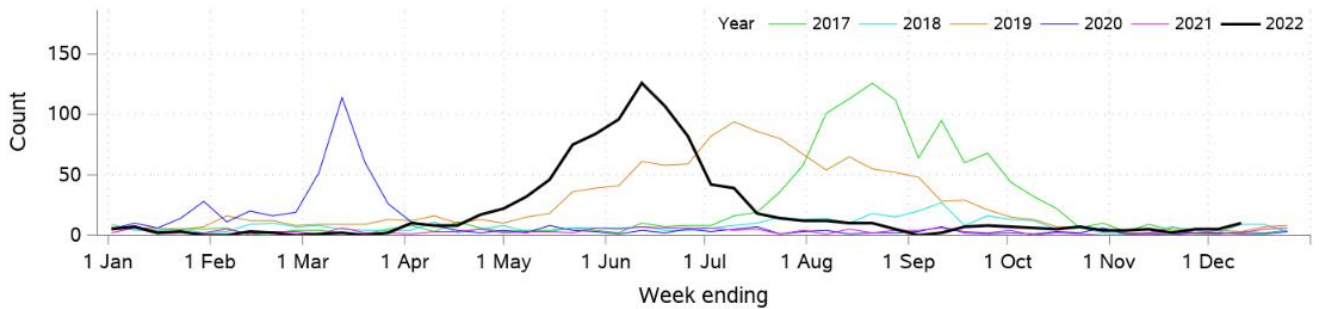


Figure 7: Presentations to ED due SARS coronavirus

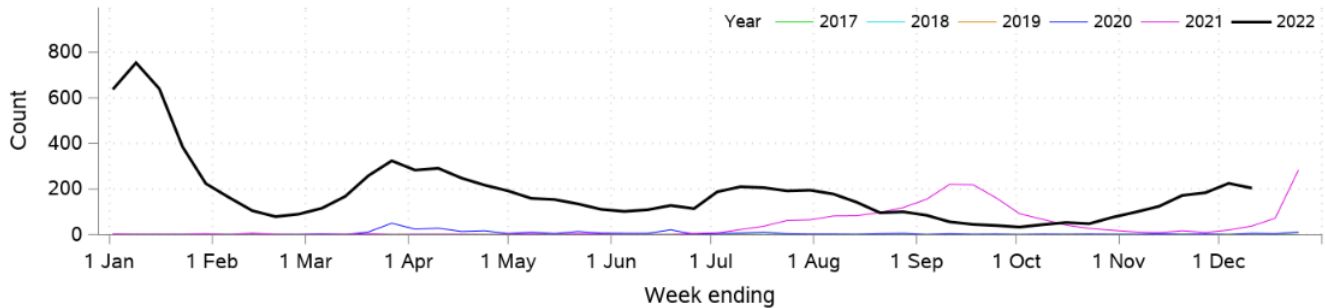


Figure 8: SARS coronavirus hospital admissions

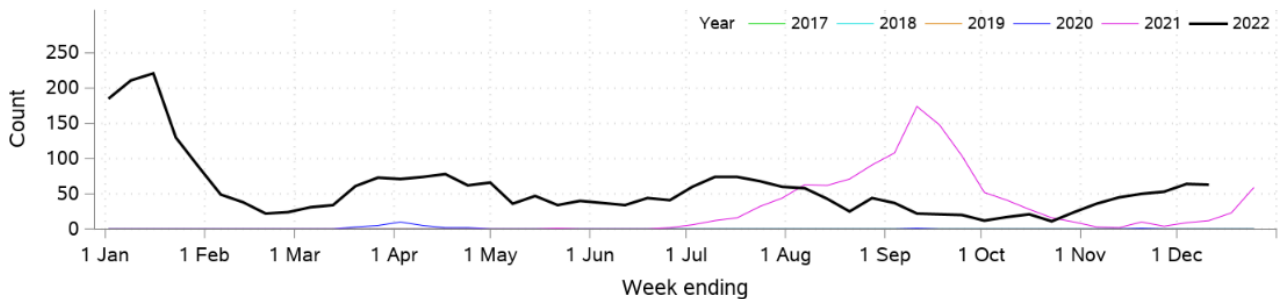


Figure 9: Pneumonia and ILI admissions

