



Key messages for local services

New cases: In the 7 days to 16 December there were **5,117** new COVID-19 cases notified in SESLHD residents, which is a **0.1% increase** compared to the previous report. COVID-19 notifications continue mainly in adults, with a higher proportion amongst women. The number of influenza cases has **increased 29%** from 52 cases to 67 cases in the past 7 days.

Deaths: There have been no COVID-19 related deaths reported in the past 7 days among SESLHD residents. The total number of COVID-19 related deaths in SESLHD is 692.

Aged & Disabled Care Facilities: Thirty aged care facilities are under surveillance following recent COVID-19 exposure, with 21 experiencing an outbreak. There are four disability services under surveillance following a recent COVID-19 exposure.

Boarding Houses & Temporary Accommodation: There are no temporary accommodation facilities with recent exposures.

Testing: COVID-19 PCR testing rates decreased across all LGAs and age groups again this week. The weekly positivity rate **increased** from 22.2% week ending 9 December to 26.9% week ending 16 December; all LGAs had increases in positivity, except for Georges River, Sydney and Waverley. PCR tests represented 67% of all notifications.

As of 10 December, there is still a mixed group of COVID-19 variants circulating, the BR.2 variant is the most common. Influenza activity is currently low, but vaccination is recommended if you are travelling to the northern hemisphere.

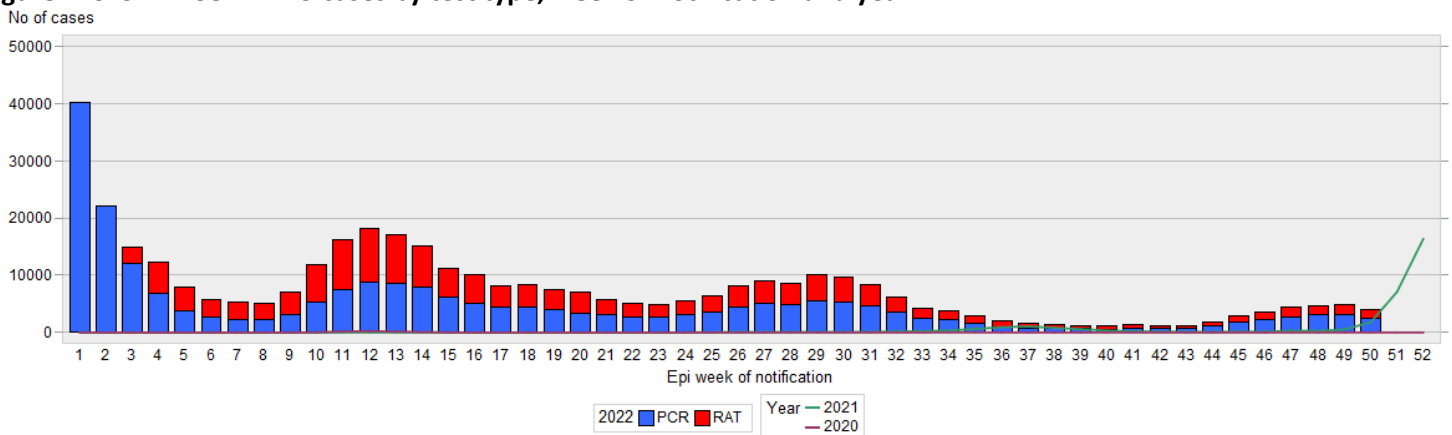
Data summary

1. Case numbers

Table 1: SESLHD COVID PCR and RAT positive cases by LGA of residence and notification week

LGA	7 days	14 days	28 days	Total	7 day crude rate per 100,000*	Total crude rate per 100,000*
Bayside	905	1,706	3,188	74,284	455	37,339
Georges River	901	1,763	3,421	68,906	558	42,661
Randwick	852	1,647	3,114	71,748	553	46,598
Sutherland Shire	1,636	3,072	5,494	111,670	684	46,681
Sydney	333	684	1,309	34,368	422	43,524
Waverley	258	559	1,106	33,000	352	45,018
Woollahra	232	446	916	23,639	404	41,210
SESLHD	5,117	9,877	18,548	417,615	527	43,037

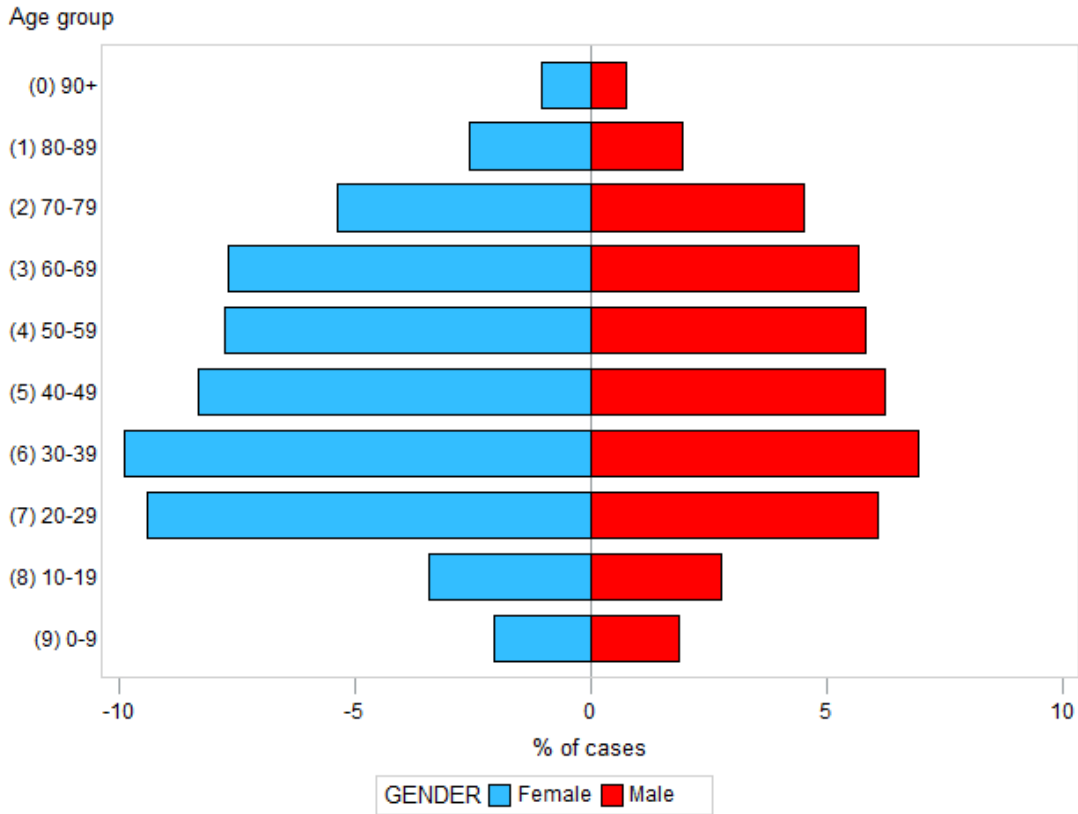
Figure 1: SESLHD COVID -19 cases by test type, week of notification and year*



*Data for week ending 16 December is incomplete due to data availability

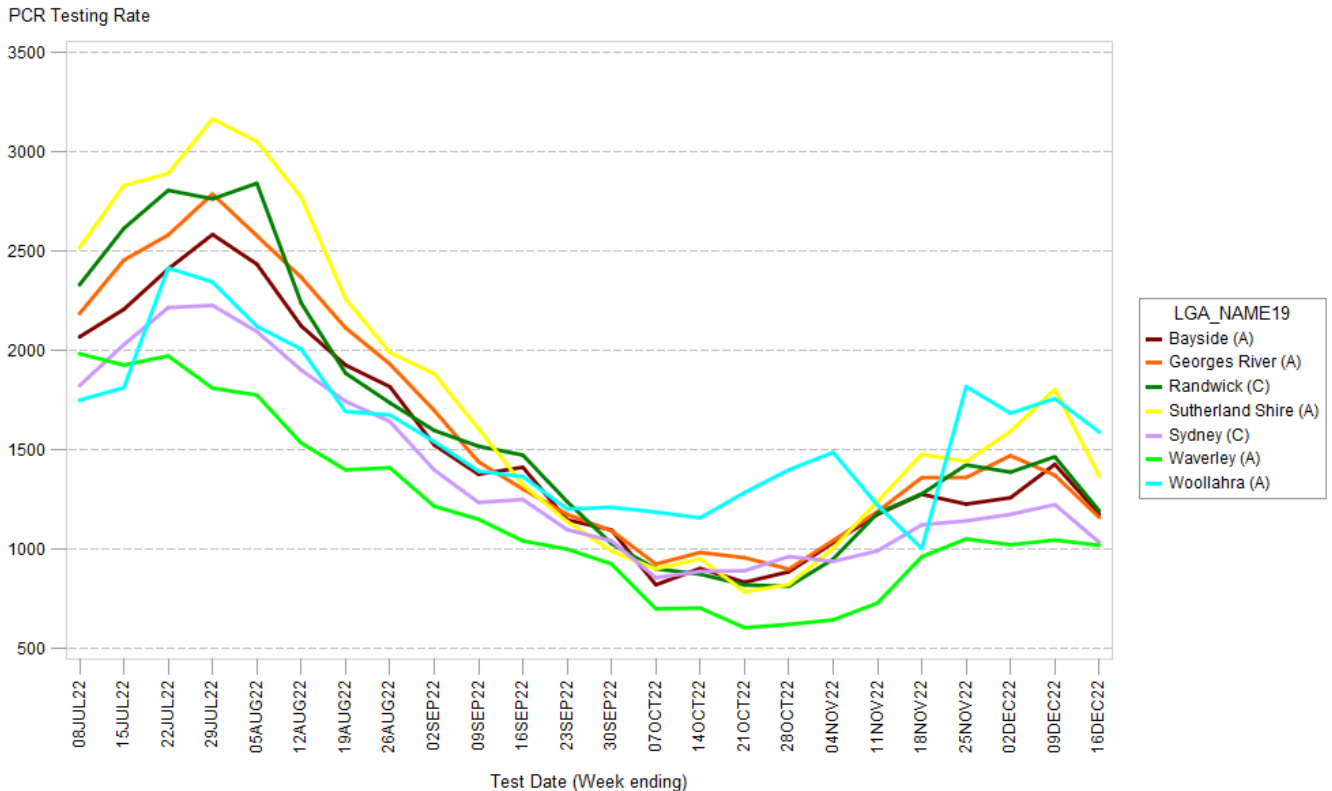
2. Demographic Data

Figure 2: Percentage of COVID cases in the last 7 days by age group and gender



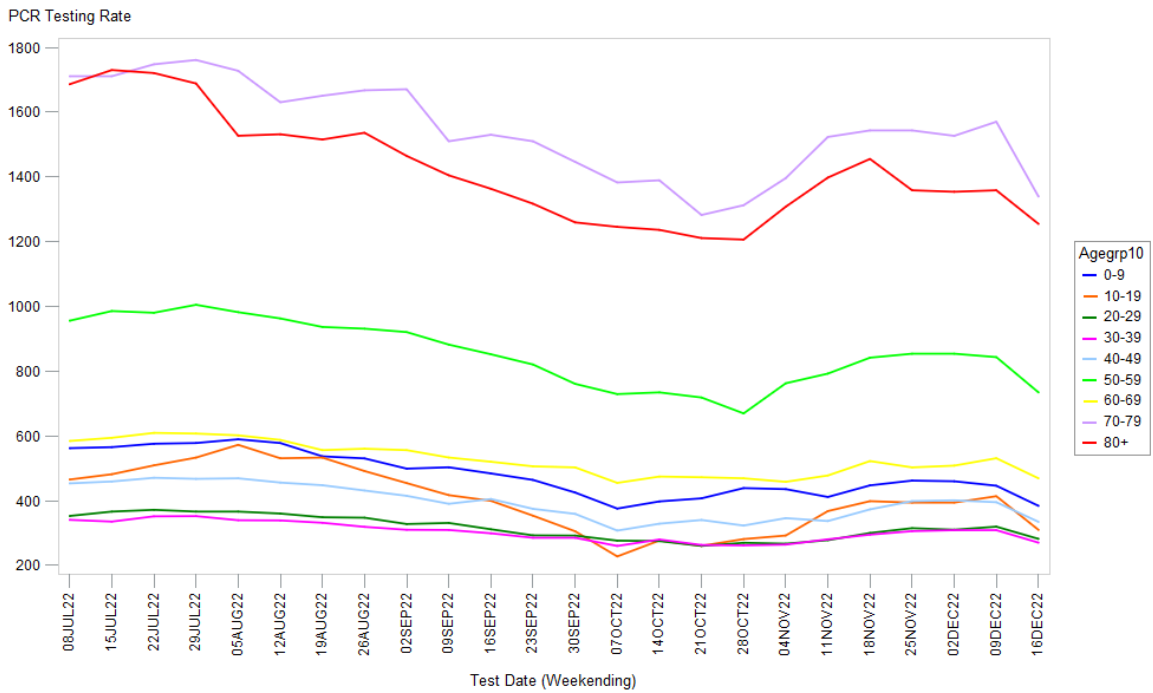
3. Testing Data

Figure 3: COVID-19 PCR weekly testing rate per 100,000 population and LGA of residence since July 2022*



*Data for week ending 16 December is incomplete due to data availability

Figure 4: COVID-19 weekly PCR testing rates per 100,000 population by age group since July 2022*



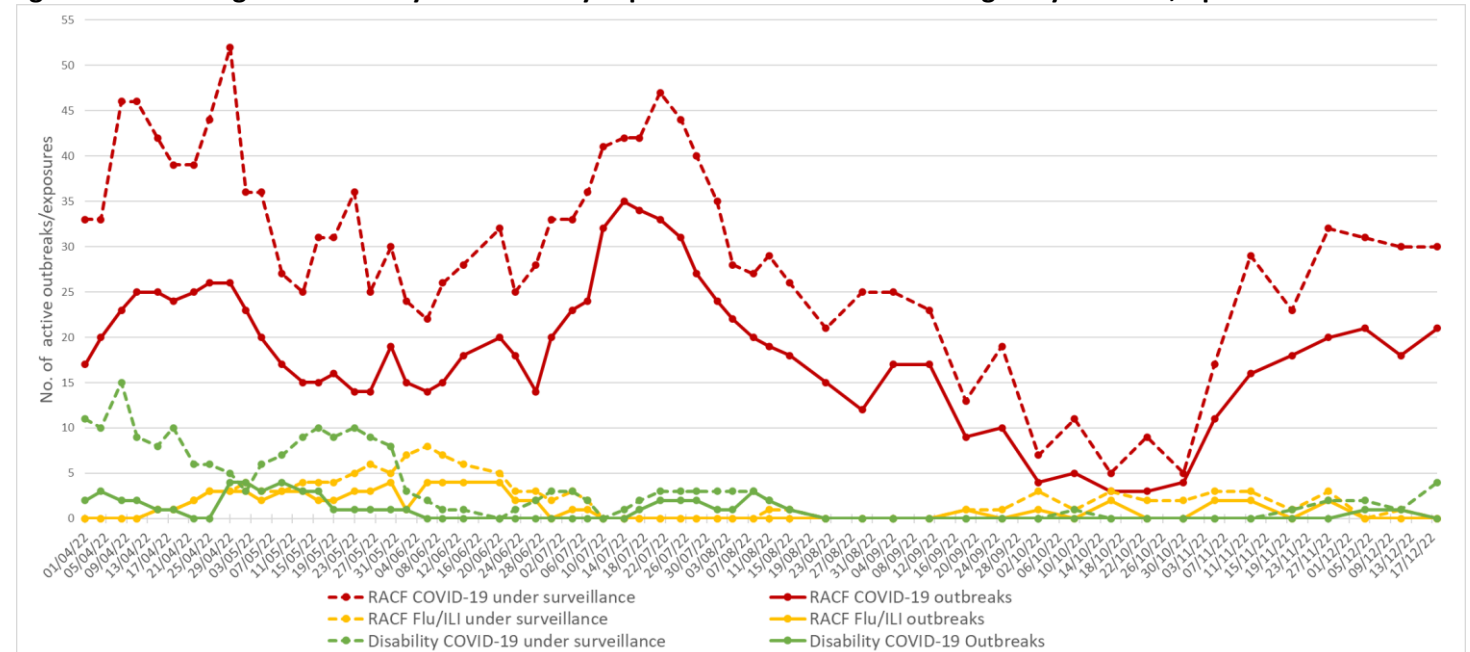
*Data for week ending 16 December is incomplete due to data availability

Table 2: COVID-19 weekly PCR positivity rate by LGA of residence

LGA	Week ending December 9 positivity rate (%)	Week ending December 16 positivity rate (%)
Bayside	23.3	28.3
Georges River	30.5	29.4
Randwick	20.6	28.2
Sutherland Shire	20.1	30.9
Sydney	25.1	21.9
Waverley	23.7	18.0
Woollahra	11.2	13.4

4. Residential facility outbreaks reported to the Public Health Unit

Figure 5: SESLHD aged care facility and disability exposures and outbreaks managed by the PHU, April to 18 Dec 2022



NB. 'Flu/ILI' outbreaks include outbreaks caused by RSV.

5. Emergency department presentations

Table 3: Emergency presentations within SESLHD weekending 18 December

Diagnosis / Category	Trend since last week	Compared to average for time of year (2017-2021)	Comment
Respiratory, fever and unspecified infection presentations	Steady	Above	1.3x higher than usual
Influenza like illness (ILI) presentations	Steady	Similar	
Coronaviruses/SARS	Steady	N/A	
Bronchiolitis presentations	Lower	Similar	0.7x lower than last week

Data is from NSW Public Health Rapid Emergency Department Surveillance System. Increase or decrease indicates change >20% compared to previous week

Figure 6: Presentations to ED due to influenza like illness

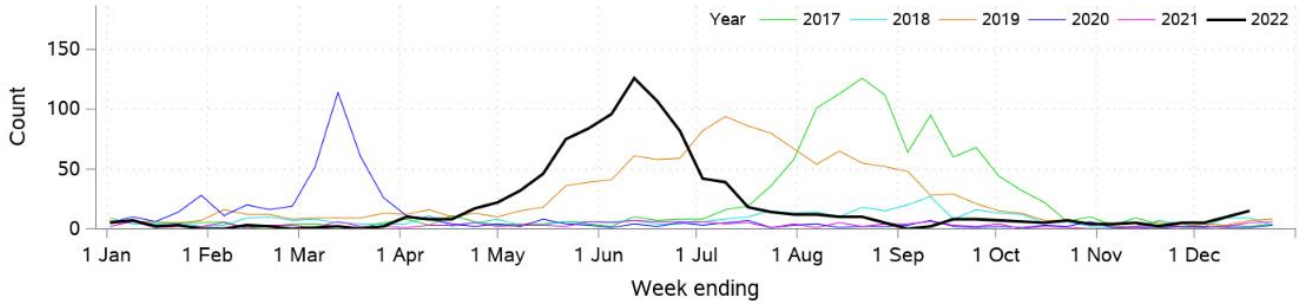


Figure 7: Presentations to ED due to Coronaviruses/SARS

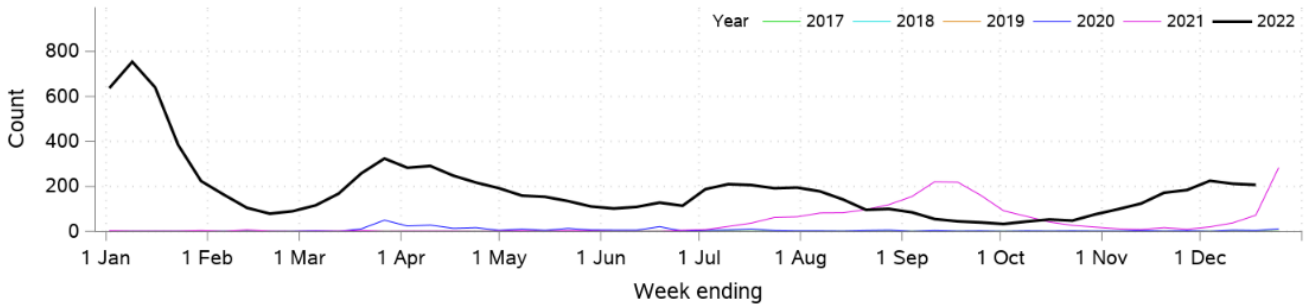


Figure 8: SARS coronavirus hospital admissions

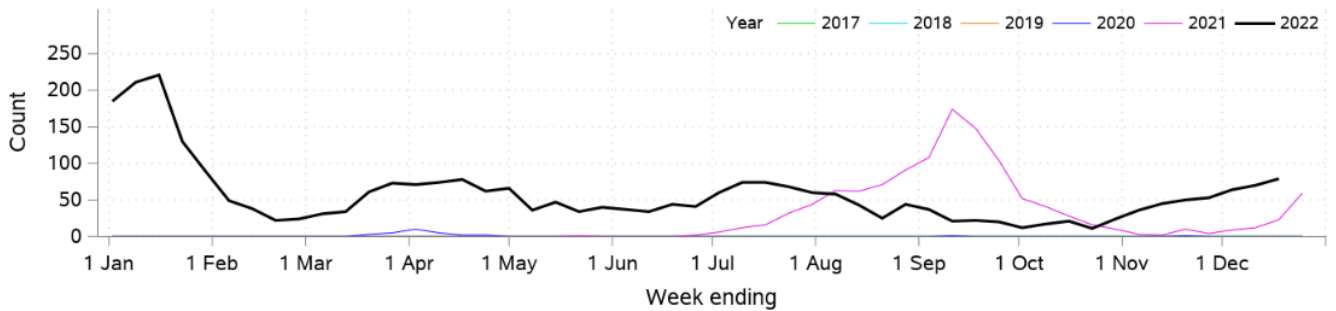


Figure 9: Pneumonia and ILI admissions

