



**Key messages for local services**

**New cases:** In the 7 days to 25 December there were **4,569** new COVID-19 cases notified in SESLHD residents, which is a **10.7% decrease** compared to the previous report, however testing access may have been affected due to the holidays; other indicators of COVID-19 impact are steady. COVID-19 notifications continue mainly in adults, with a higher proportion amongst women. There were 64 influenza notifications, similar to last week (67 cases).

**Deaths:** There have been 10 COVID-19 related deaths reported since the last report. The total number of COVID-19 related deaths in SESLHD is 702.

**Aged & Disabled Care Facilities:** Thirty-four aged care facilities are under surveillance following recent COVID-19 exposure, with 25 experiencing an outbreak. There are three disability services under surveillance following a recent COVID-19 exposure.

**Boarding Houses & Temporary Accommodation:** There is currently one homeless shelter that is experiencing a COVID-19 outbreak.

**Testing:** COVID-19 PCR testing rates decreased across all LGAs and age groups again this week. The weekly positivity rate **increased** from 24.4% week ending 16 December to 26.4% week ending 23 December; all LGAs had increases in positivity. PCR tests represented 69% of all notifications.

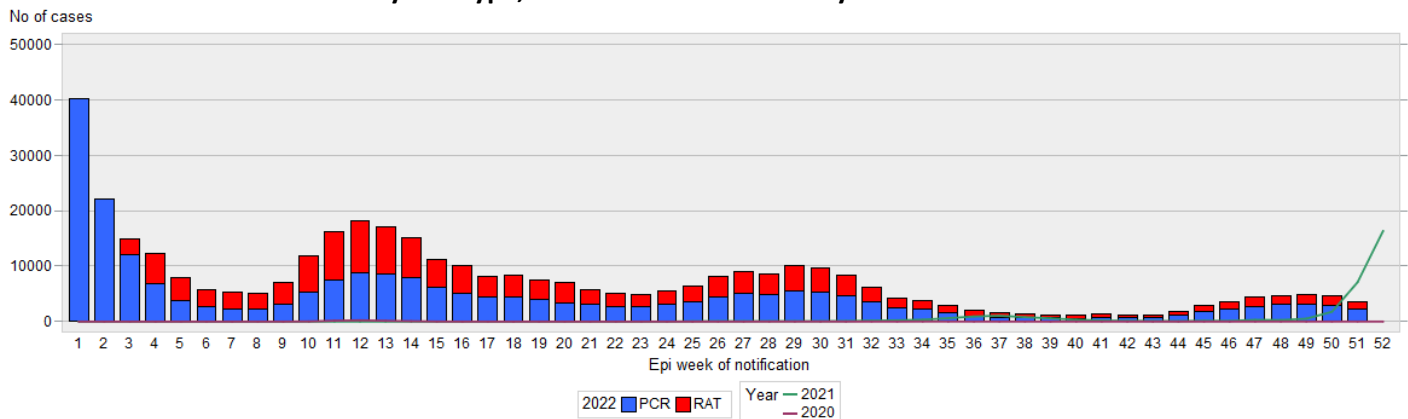
**Data summary**

**1. Case numbers**

**Table 1: SESLHD COVID PCR and RAT positive cases by LGA of residence and notification week**

LGA	7 days	14 days	28 days	Total	7 day crude rate per 100,000*	Total crude rate per 100,000*
Bayside	800	1,623	3,229	75,002	402	37,700
Georges River	807	1,633	3,394	69,638	500	43,114
Randwick	738	1,520	3,082	72,416	479	47,032
Sutherland Shire	1,461	2,941	5,686	112,975	611	47,226
Sydney	270	577	1,255	34,611	342	43,832
Waverley	269	500	1,102	33,242	367	45,348
Woollahra	224	430	877	23,837	391	41,555
<b>SESLHD</b>	<b>4,569</b>	<b>9,224</b>	<b>18,625</b>	<b>421,721</b>	<b>471</b>	<b>43,460</b>

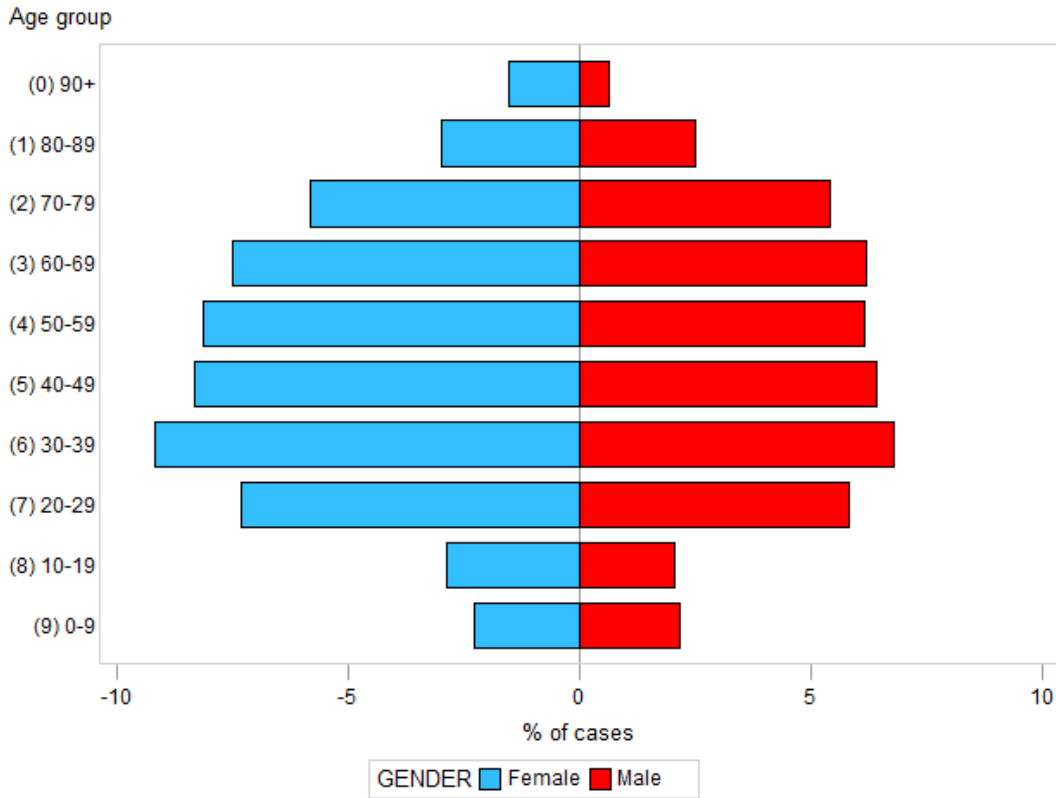
**Figure 1: SESLHD COVID -19 cases by test type, week of notification and year\***



\*Data for week ending 25 December is incomplete due to data availability

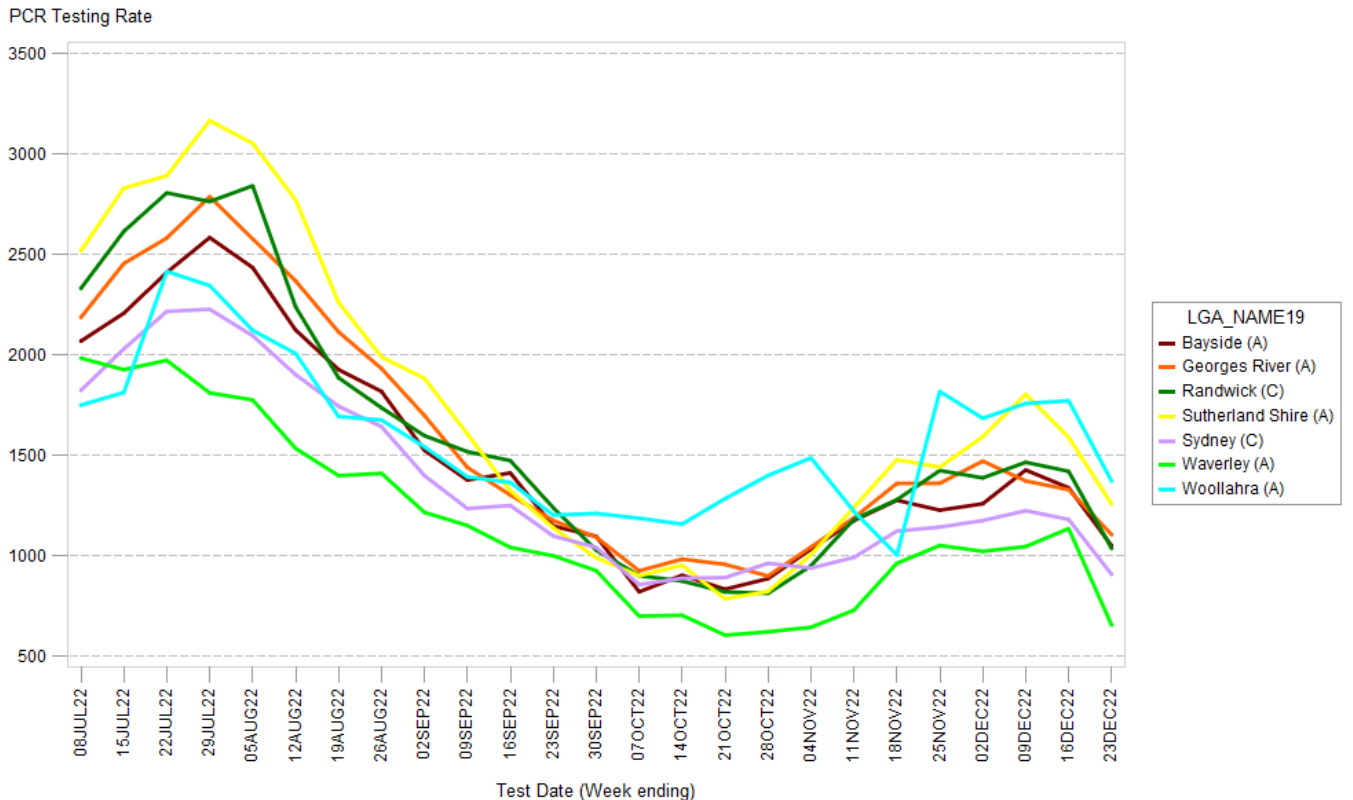
## 2. Demographic Data

Figure 2: Percentage of COVID cases in the last 7 days by age group and gender



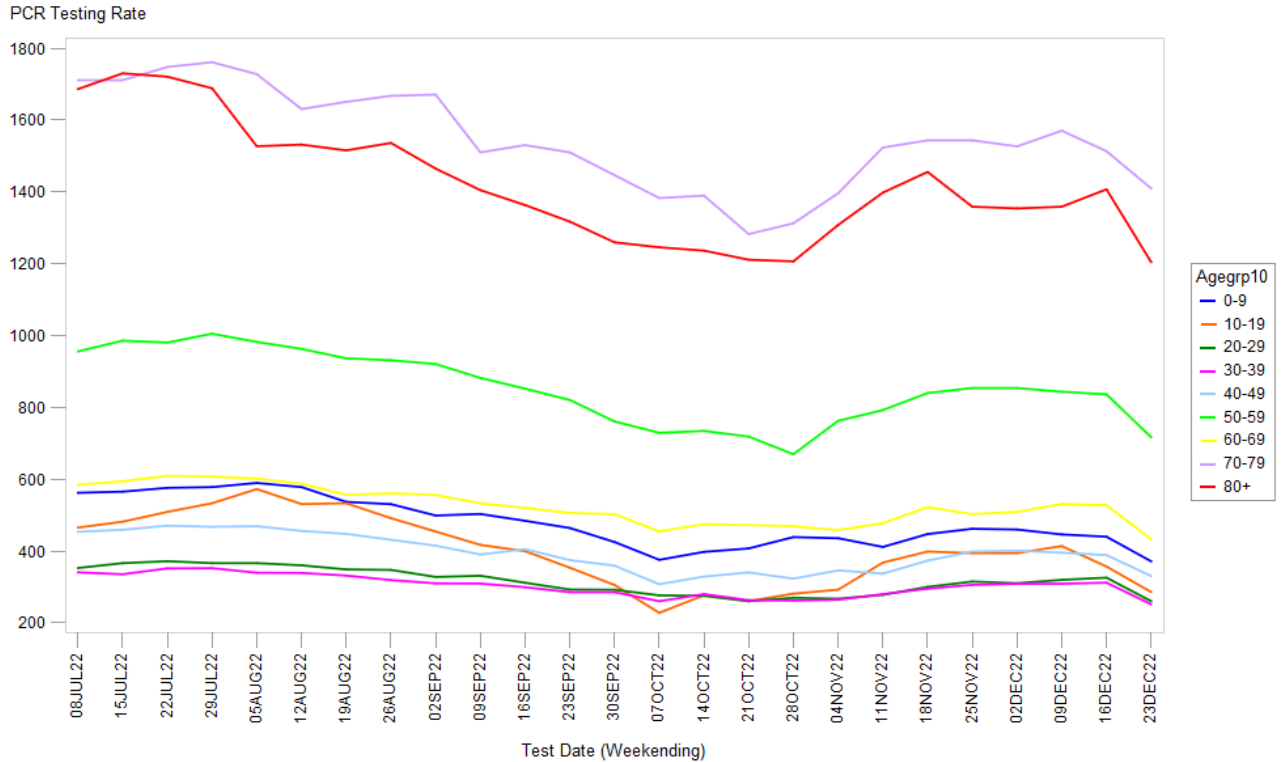
## 3. Testing Data

Figure 3: COVID-19 PCR weekly testing rate per 100,000 population and LGA of residence since July 2022\*



\*Data for week ending 25 December is incomplete due to data availability

**Figure 4: COVID-19 weekly PCR testing rates per 100,000 population by age group since July 2022\***



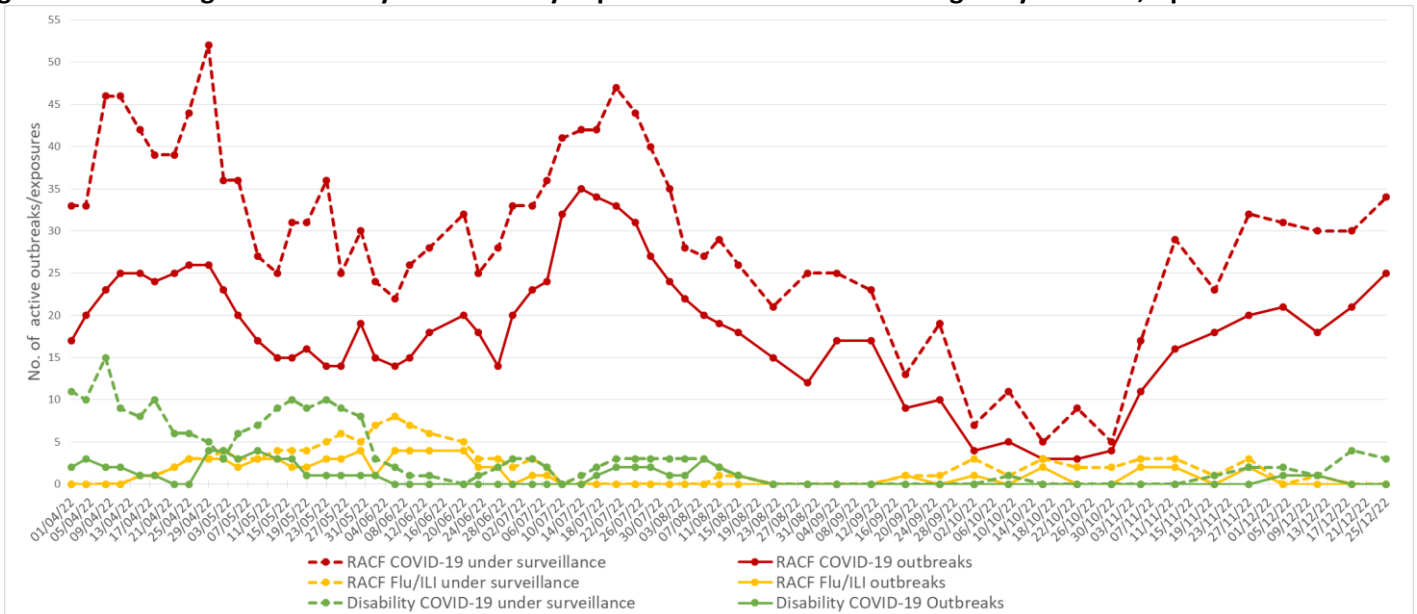
\*Data for week ending 25 December is incomplete due to data availability

**Table 2: COVID-19 weekly PCR positivity rate by LGA of residence**

LGA	Week ending December 16 positivity rate (%)	Week ending December 23 positivity rate (%)
Bayside	26.1	27.0
Georges River	27.1	28.7
Randwick	24.8	26.9
Sutherland Shire	27.4	28.9
Sydney	21.0	22.2
Waverley	16.9	26.5
Woollahra	12.5	13.1

**4. Residential facility outbreaks reported to the Public Health Unit**

**Figure 5: SESLHD aged care facility and disability exposures and outbreaks managed by the PHU, April to 25 Dec 2022**



NB. 'Flu/ILI' outbreaks include outbreaks caused by RSV.

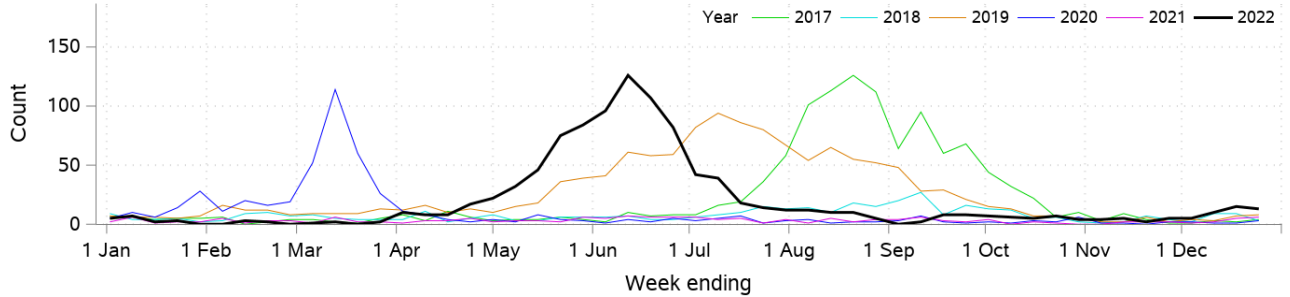
## 5. Emergency department presentations

**Table 3: Emergency presentations within SESLHD week ending 25 December**

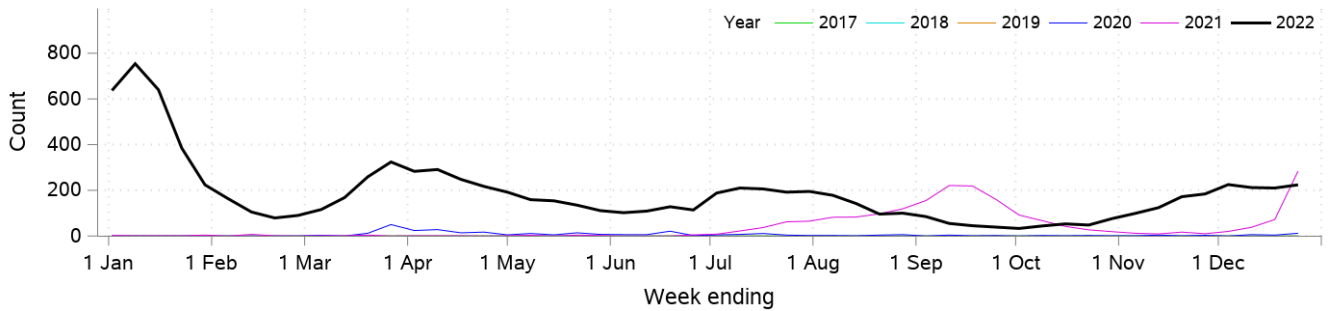
Diagnosis / Category	Trend since last week	Compared to average for time of year (2017-2021)	Comment
Respiratory, fever and unspecified infection presentations	Steady	Similar	
Influenza like illness (ILI) presentations	Steady	Similar	
Coronaviruses/SARS	Steady	N/A	
Bronchiolitis presentations	<b>Steady</b>	<b>Similar</b>	

Data is from NSW Public Health Rapid Emergency Department Surveillance System. Increase or decrease indicates change >20% compared to previous week

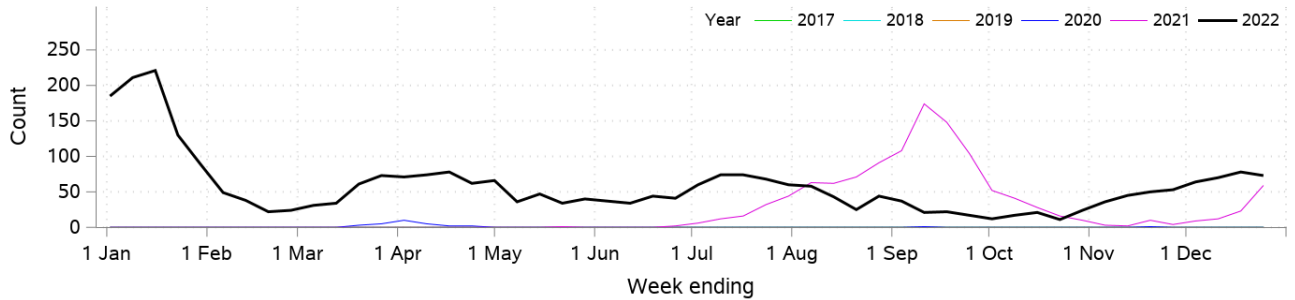
**Figure 6: Presentations to ED due to influenza like illness**



**Figure 7: Presentations to ED due Coronaviruses/SARS**



**Figure 8: SARS coronavirus hospital admissions**



**Figure 9: Pneumonia and ILI admissions**

