

Key messages for local services

New cases: In the 7 days to 10 February there were **740** new COVID-19 cases notified in SESLHD residents, which is a **5% increase** compared to the previous report. COVID-19 notifications continue mainly in adults. COVID-19 presentations to EDs and admissions from EDs have remained steady, with a decrease in pneumonia and ILI presentations. Influenza notifications decreased to 20.

Deaths: There have been 7 COVID-19 related deaths reported in the past week. The total number of COVID-19 related deaths in SESLHD is 762.

Aged & Disabled Care Facilities: Exposures in aged care facilities increased this week: seven aged care facilities are under surveillance following recent COVID-19 exposure, with two experiencing an outbreak. Two aged care facilities are under surveillance following recent influenza exposure, with one experiencing an outbreak. There are no disability services with a recent COVID-19 exposure.

Boarding Houses & Temporary Accommodation: There is no temporary accommodation facility with a recent exposure to COVID-19.

Testing: COVID-19 PCR testing rates continued to decrease across most LGAs and age groups this week. The 10-19 year age group saw a slight increase in testing. The weekly positivity rate **was steady** for SES over the past 2 weeks at 8%; however, the positivity rate is markedly higher in Bayside, Georges River, Randwick and Sutherland than the northern LGAs. PCR tests represented 62% of all notifications.

As of 4 February, XBF is now the most common variant circulating with BR.2 and other BA.2.75 sublineages also contributing to the variant mix.

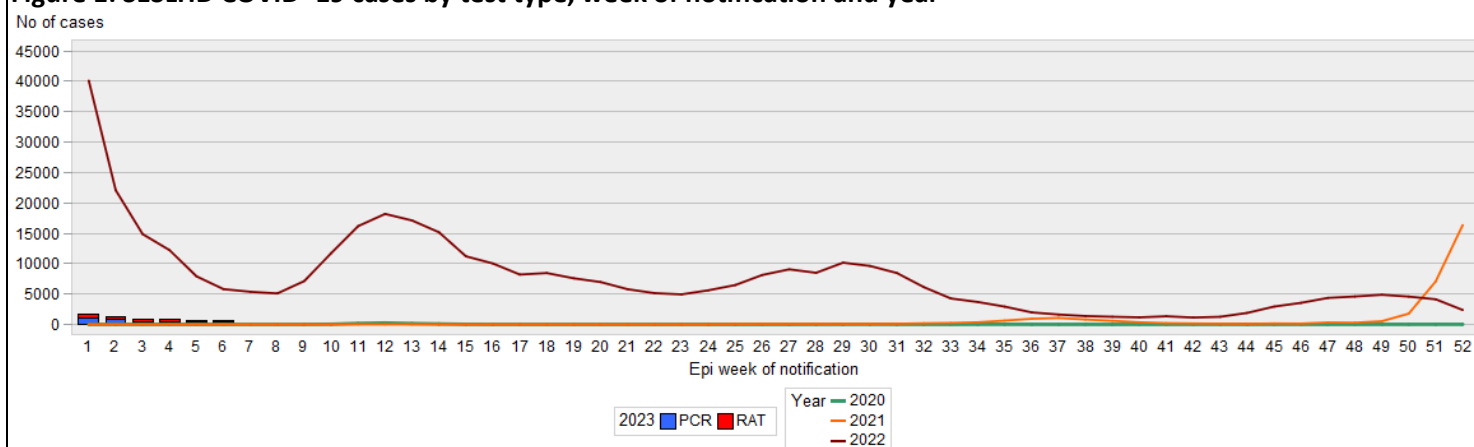
Data summary

1. Case numbers

Table 1: SESLHD COVID PCR and RAT positive cases by LGA of residence and notification week

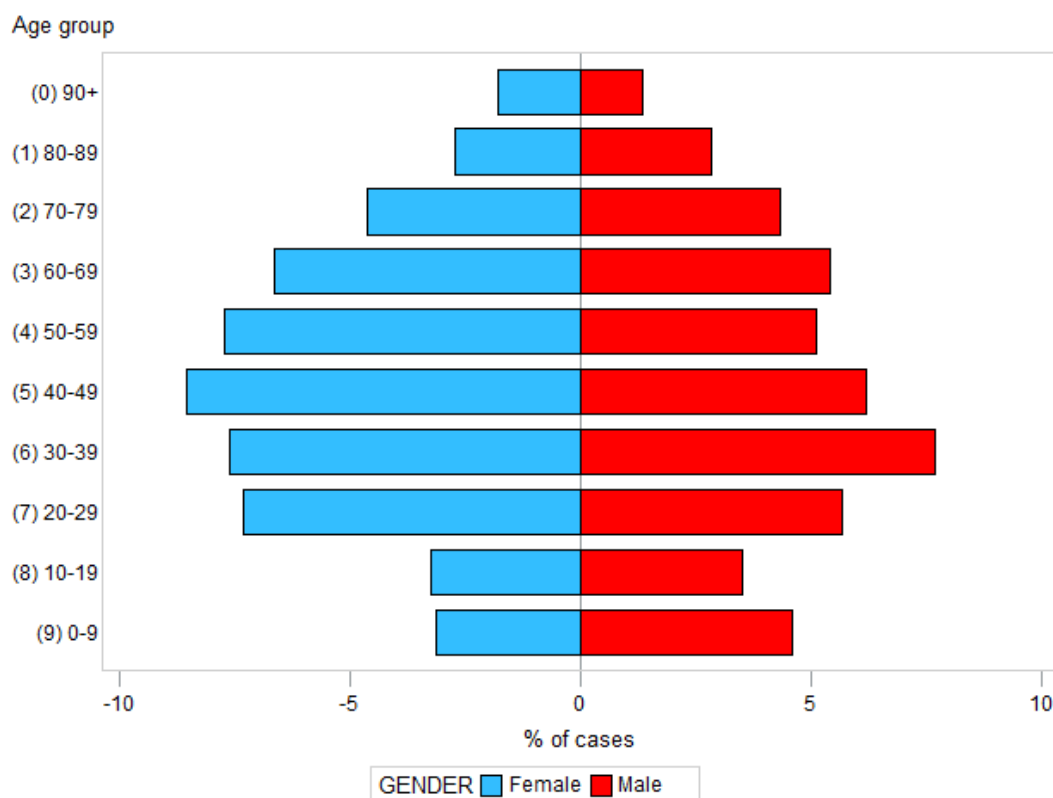
LGA	7 days	14 days	28 days	Total	7 day crude rate per 100,000*	Total crude rate per 100,000*
Bayside	136	259	583	76,604	68	38,506
Georges River	149	278	590	71,313	92	44,151
Randwick	149	265	608	74,008	97	48,066
Sutherland Shire	190	353	844	115,294	79	48,195
Sydney	38	78	212	35,232	48	44,617
Waverley	39	86	202	33,759	53	46,053
Woollahra	39	78	164	24,340	68	42,432
SESLHD	740	1,397	3,203	430,550	76	44,370

Figure 1: SESLHD COVID -19 cases by test type, week of notification and year



2. Demographic Data

Figure 2: Percentage of COVID cases in the last 7 days by age group and gender



3. Testing Data

Figure 3: COVID-19 PCR weekly testing rate per 100,000 population and LGA of residence since July 2022

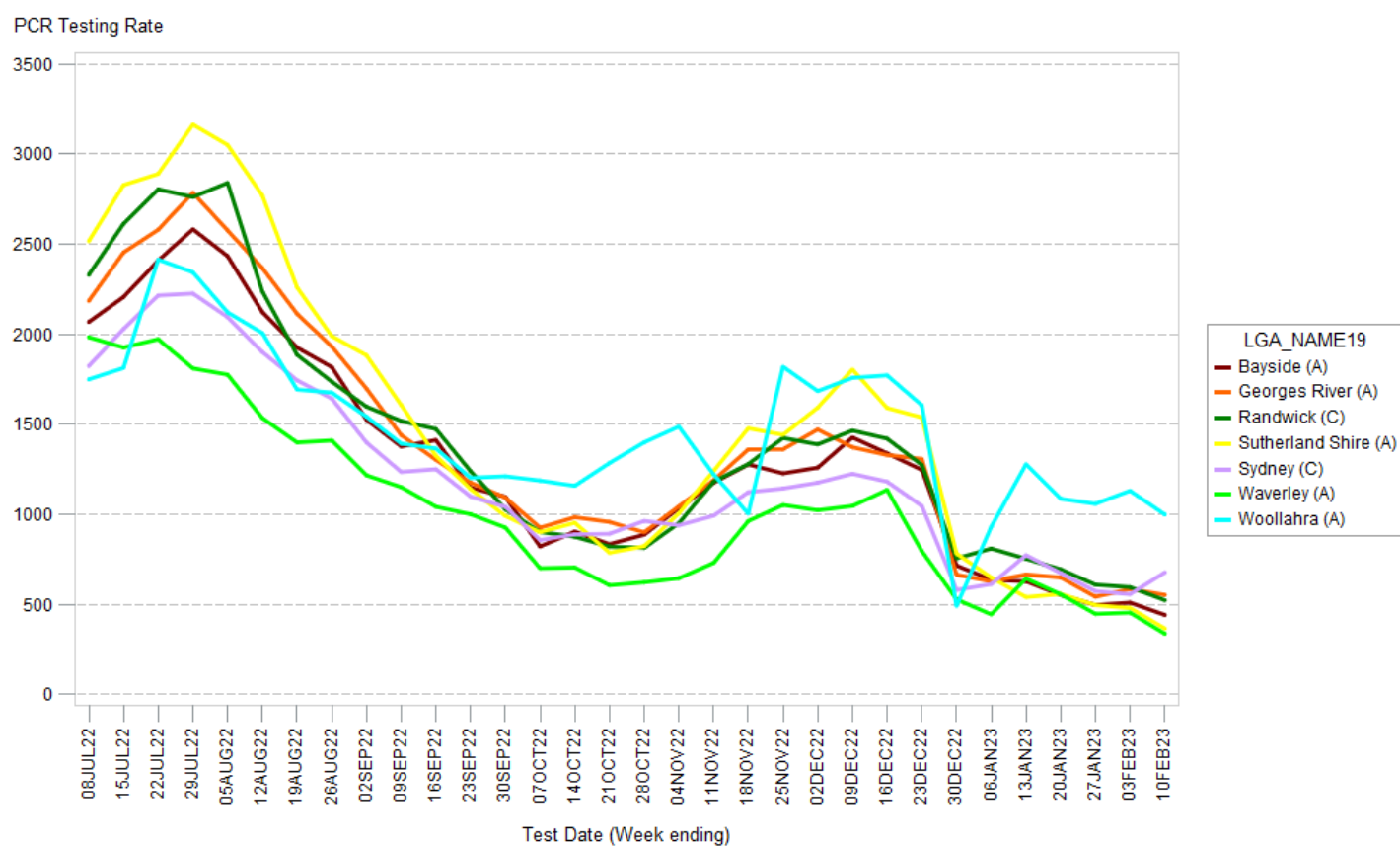


Figure 4: COVID-19 weekly PCR testing rates per 100,000 population by age group since July 2022

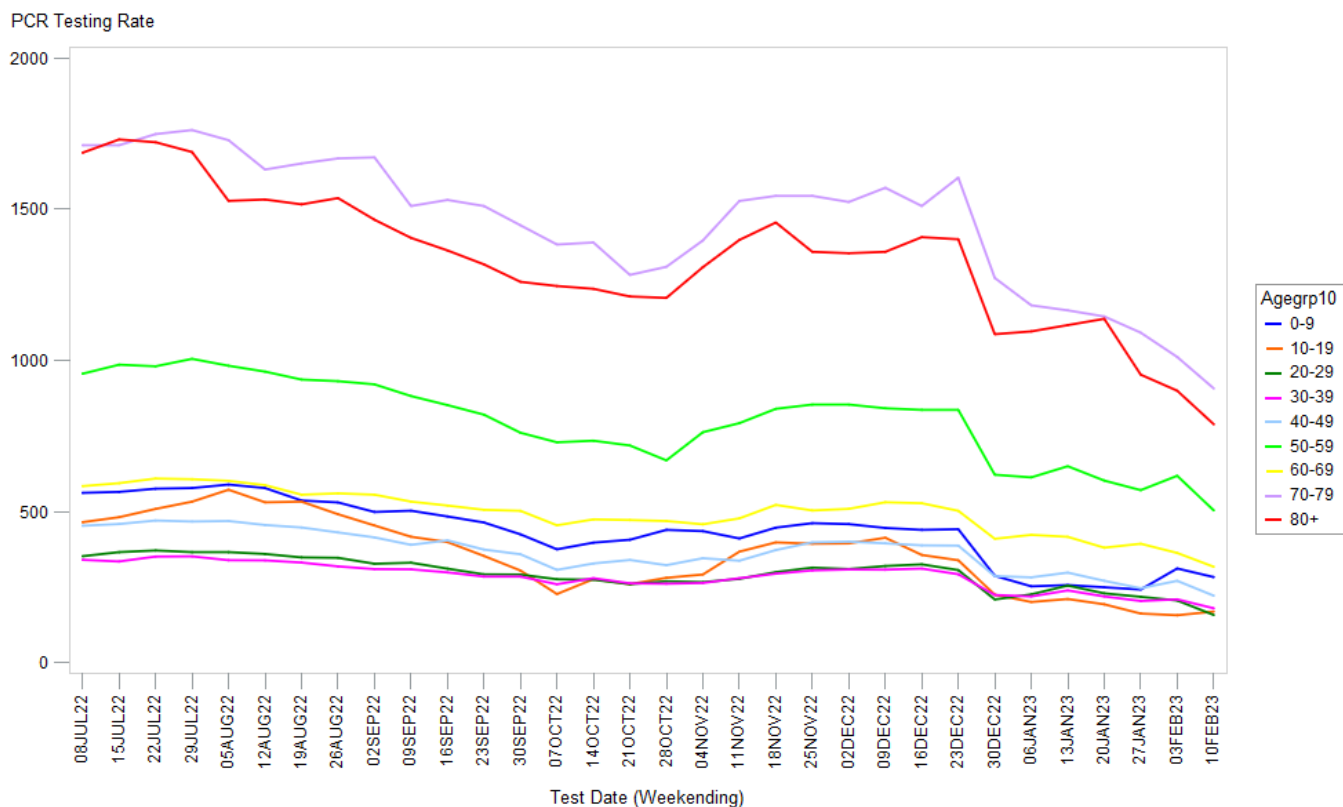
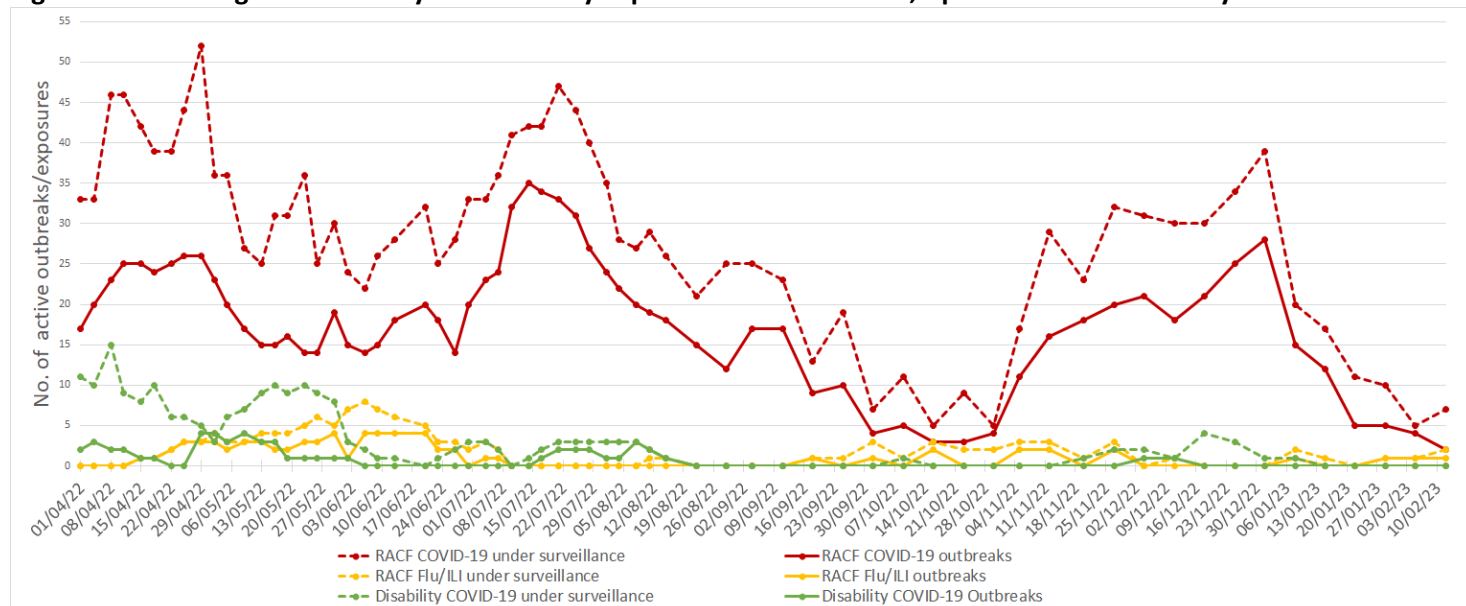


Table 2: COVID-19 weekly PCR positivity rate by LGA of residence

LGA	Week ending February 3, positivity rate (%)	Week ending February 10, positivity rate (%)
Bayside	10.2	11.6
Georges River	9.9	10.2
Randwick	8.7	10.2
Sutherland Shire	8.4	11.0
Sydney	6.9	1.7
Waverley	6.6	4.5
Woollahra	2.9	3.6

4. Residential facility outbreaks reported to the Public Health Unit

Figure 5: SESLHD aged care facility and disability exposures and outbreaks, April 2022 to 12 February 2023



NB. 'Flu/ILI' outbreaks include outbreaks caused by RSV.

5. Emergency department presentations

Table 3: Emergency presentations within SESLHD week ending 12 February 2023

Diagnosis / Category	Trend since last week	Compared to average for time of year (2017-2021)	Comment
Respiratory, fever and unspecified infection presentations	Steady	Similar	
Influenza like illness (ILI) presentations	Decreased	Decreased	0.4 & 0.5 x lower
Coronaviruses/SARS	Steady	N/A	
Bronchiolitis presentations	Increased	Similar	1.5 x higher (low numbers)

Data is from NSW Public Health Rapid Emergency Department Surveillance System. Increase or decrease indicates change >20% compared to previous week

Figure 6: Presentations to ED due to influenza like illness

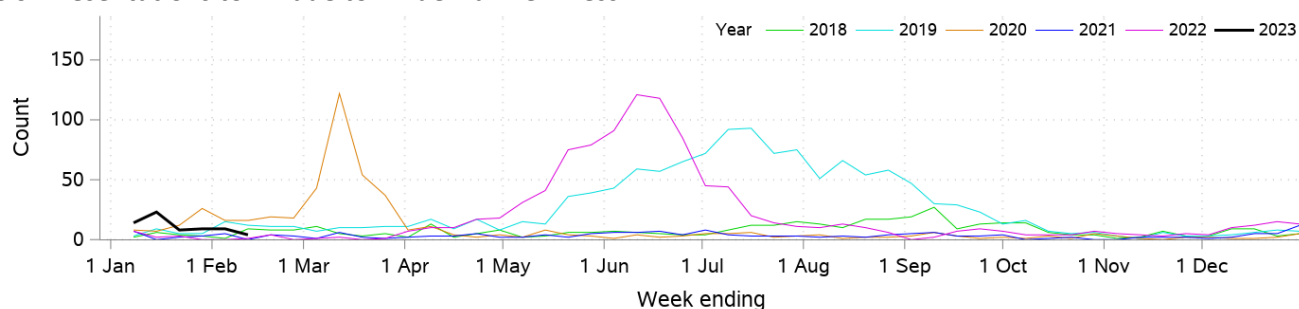


Figure 7: Presentations to ED due to Coronaviruses/SARS

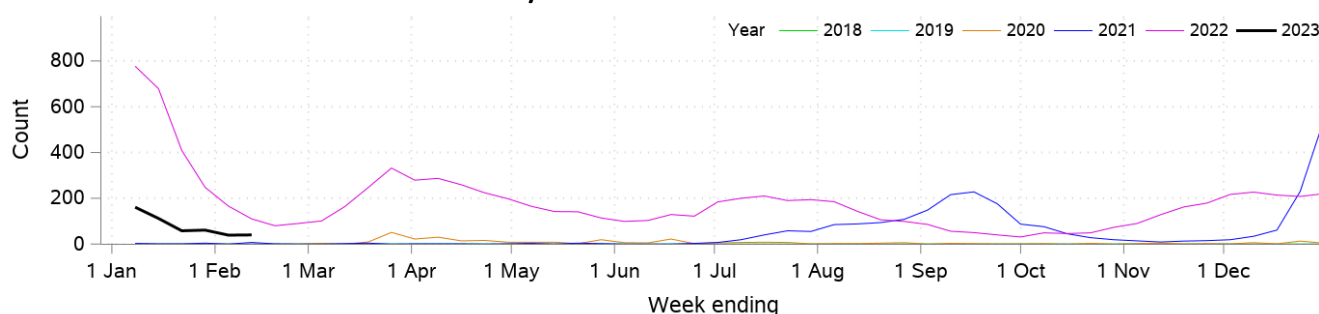


Figure 8: SARS coronavirus hospital admissions

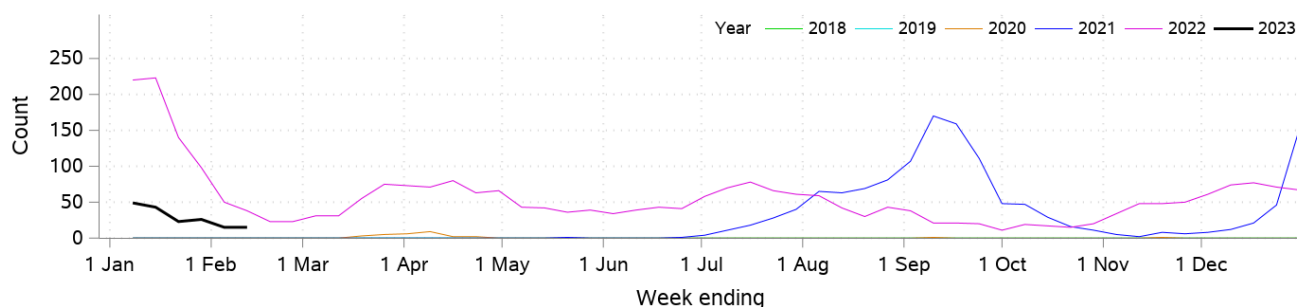


Figure 9: Pneumonia and ILI admissions

