



Key messages for local services

New cases: In the 7 days to 13 January there were **1,508** new COVID-19 cases notified in SESLHD residents, which is a **26.3% decrease** compared to the previous report. COVID-19 notifications continue mainly in adults, with a higher proportion among women. COVID-19 presentations to EDs are decreasing. There were 78 influenza notifications, a **6% decrease** compared to the previous week.

Deaths: There have been 14 COVID-19 related death reported since the last report. The total number of COVID-19 related deaths in SESLHD is 732.

Aged & Disabled Care Facilities: Exposures and outbreaks in aged care facilities decreased this week: 17 aged care facilities are under surveillance following recent COVID-19 exposure, with 12 experiencing an outbreak. There are no disability services under surveillance following a recent COVID-19 exposure.

Boarding Houses & Temporary Accommodation: There are currently no boarding houses or temporary accommodation facilities with a recent exposure to COVID-19.

Testing: COVID-19 PCR testing rates decreased across all LGAs and age groups again this week, except Woollahra. The weekly positivity rate **decreased** from 17.3% week ending 6 January to 14.1% week ending 13 January; all LGAs had decreases in positivity except Georges River LGA. PCR tests represented 63% of all notifications.

There is still a highly mixed group of sub-variants circulating; the BR.2 sub-variant is the most common. NSW Health continues to monitor emerging sub-variants including XBB.1.5 and XBF. Influenza activity is still at low levels, but showing slight signs of increase, which is often seen in January as people return and visit from the northern hemisphere Winter. Influenza vaccination is still recommended if travelling to the northern hemisphere.

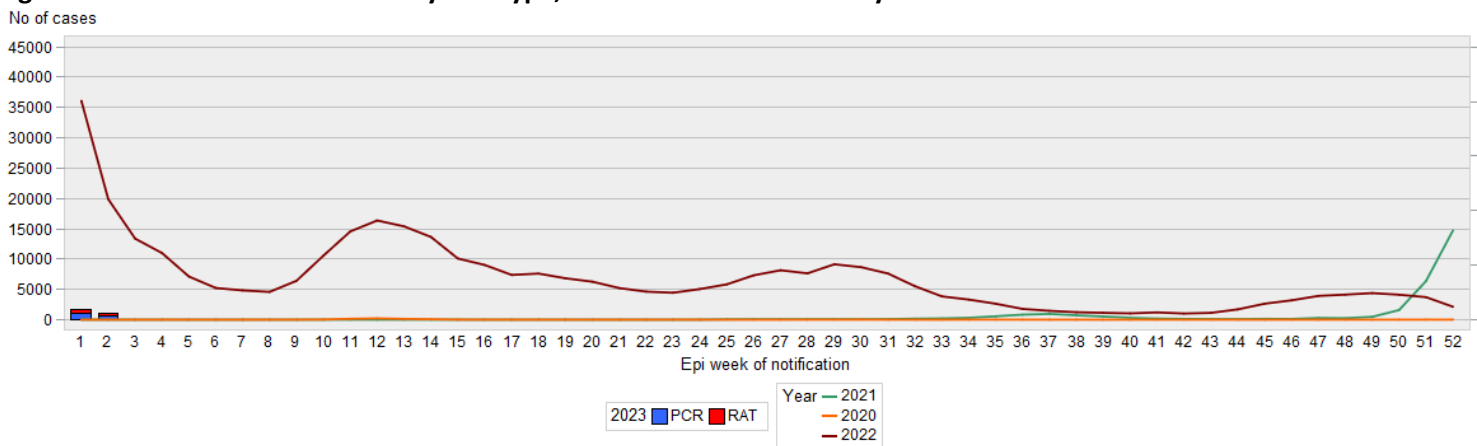
Data summary

1. Case numbers

Table 1: SESLHD COVID PCR and RAT positive cases by LGA of residence and notification week

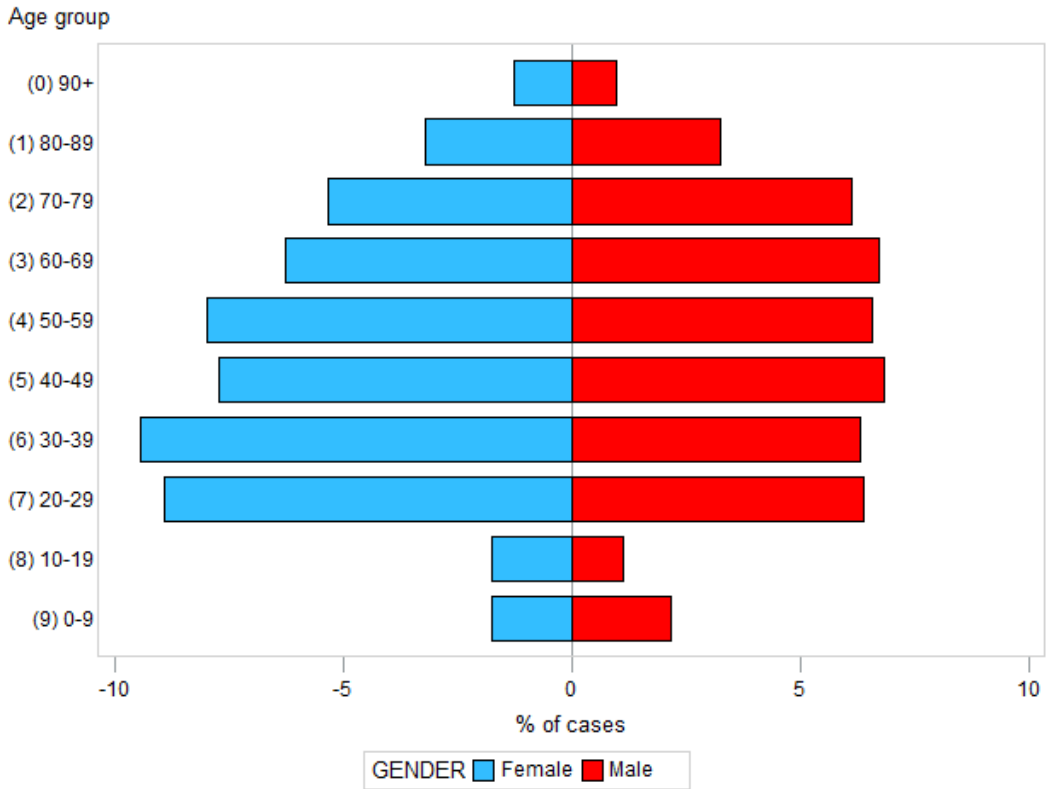
LGA	7 days	14 days	28 days	Total	7 day crude rate per 100,000*	Total crude rate per 100,000*
Bayside	256	628	1,837	76,039	129	38,222
Georges River	332	667	1,915	70,746	206	43,800
Randwick	307	651	1,736	73,414	199	47,680
Sutherland Shire	334	818	2,950	114,464	140	47,848
Sydney	102	238	684	35,025	129	44,356
Waverley	85	196	589	33,562	116	45,785
Woollahra	92	211	569	24,182	160	42,157
SESLHD	1,508	3,409	10,280	427,432	155	44,048

Figure 1: SESLHD COVID -19 cases by test type, week of notification and year



2. Demographic Data

Figure 2: Percentage of COVID cases in the last 7 days by age group and gender



3. Testing Data

Figure 3: COVID-19 PCR weekly testing rate per 100,000 population and LGA of residence since July 2022

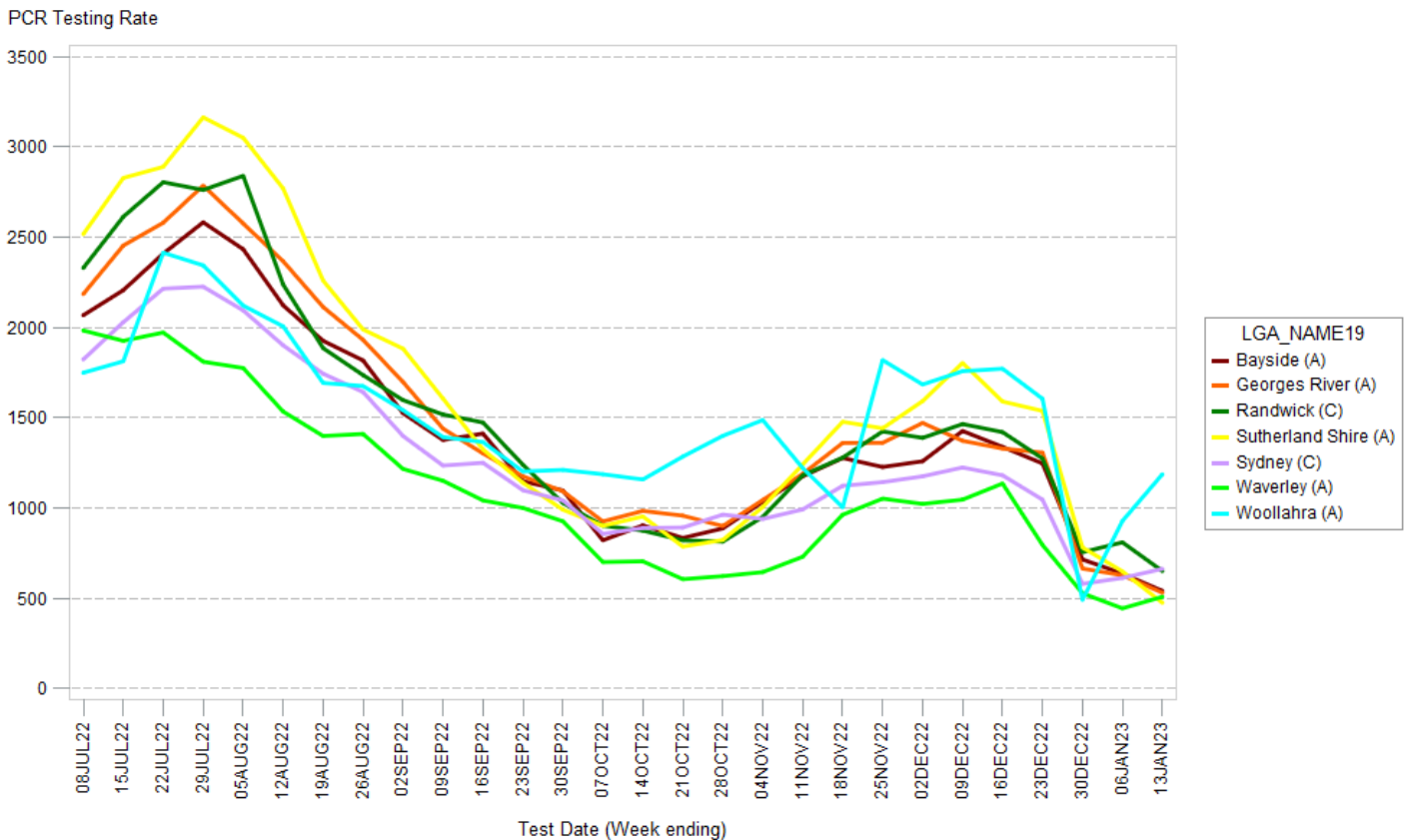


Figure 4: COVID-19 weekly PCR testing rates per 100,000 population by age group since July 2022

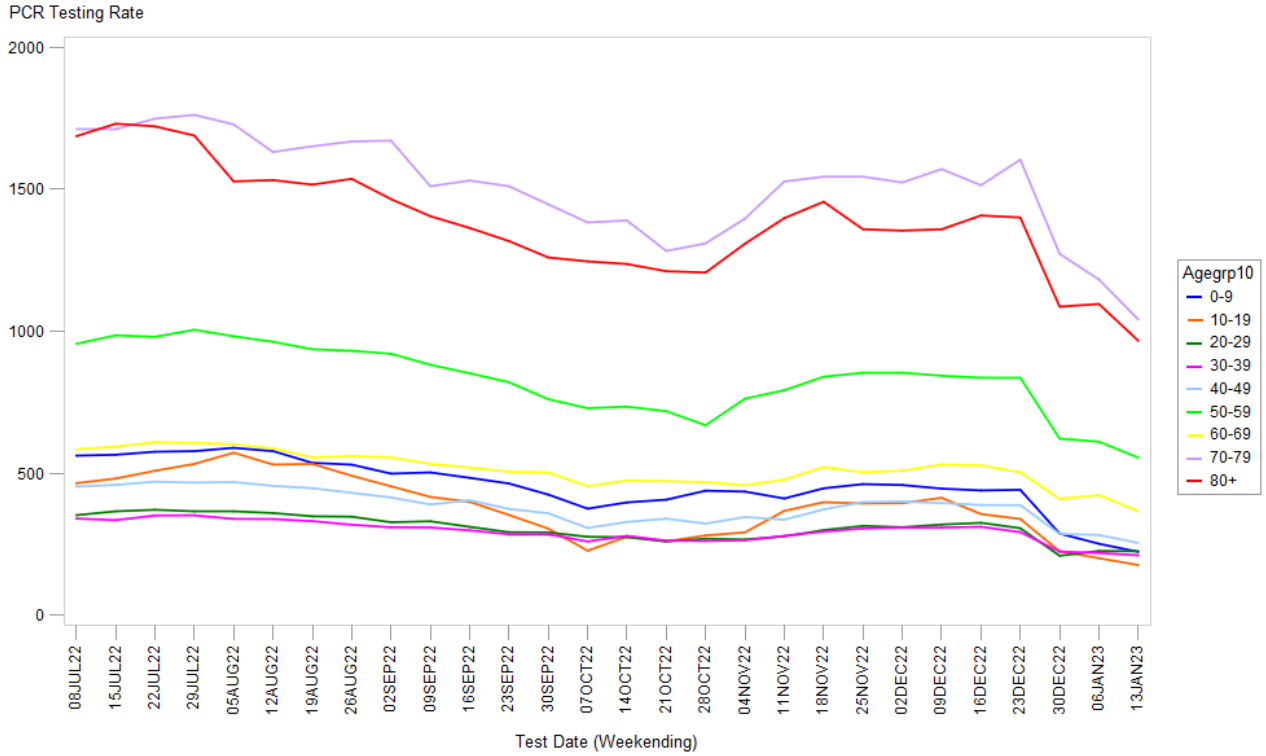
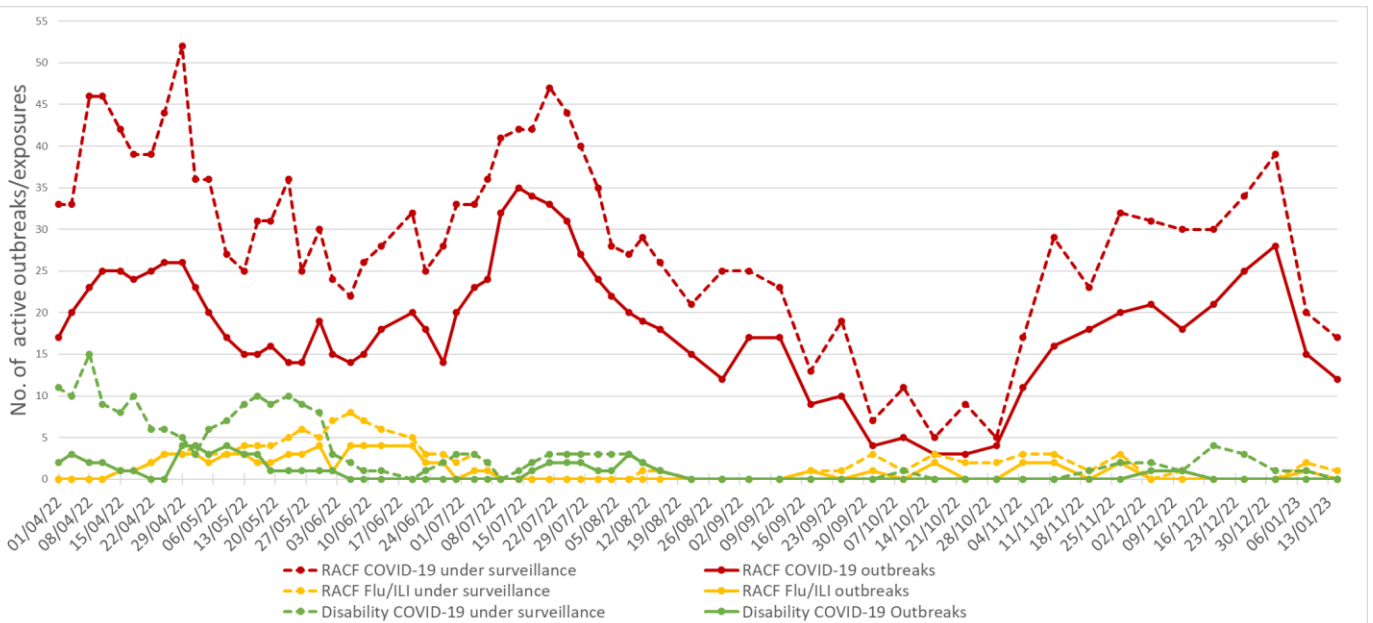


Table 2: COVID-19 weekly PCR positivity rate by LGA of residence

LGA	Week ending January 6, positivity rate (%)	Week ending January 13, positivity rate (%)
Bayside	21.1	15.9
Georges River	20.9	22.6
Randwick	15.1	15.5
Sutherland Shire	16.8	13.6
Sydney	15.5	8.9
Waverley	19.7	10.4
Woollahra	9.9	5.7

4. Residential facility outbreaks reported to the Public Health Unit

Figure 5: SESLHD aged care facility and disability exposures and outbreaks managed by the PHU, April to 15 January 2023



NB. 'Flu/ILI' outbreaks include outbreaks caused by RSV.

5. Emergency department presentations

Table 3: Emergency presentations within SESLHD weekending 15 January 2023

Diagnosis / Category	Trend since last week	Compared to average for time of year (2017-2021)	Comment
Respiratory, fever and unspecified infection presentations	Steady	Similar	
Influenza like illness (ILI) presentations	Above	Above	1.7x higher than last week 4.4 x higher than average
Coronaviruses/SARS	Decreased	N/A	0.7x lower than last week
Bronchiolitis presentations	Decreased	Below	

Data is from NSW Public Health Rapid Emergency Department Surveillance System. Increase or decrease indicates change >20% compared to previous week

Figure 6: Presentations to ED due to influenza like illness

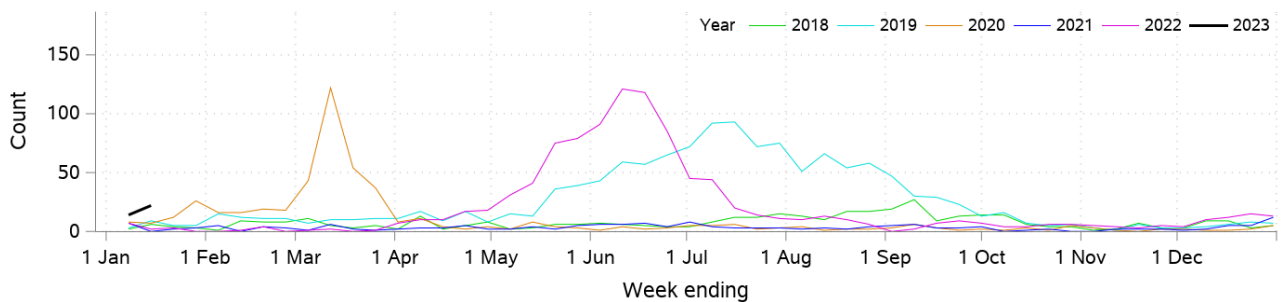


Figure 7: Presentations to ED due Coronaviruses/SARS

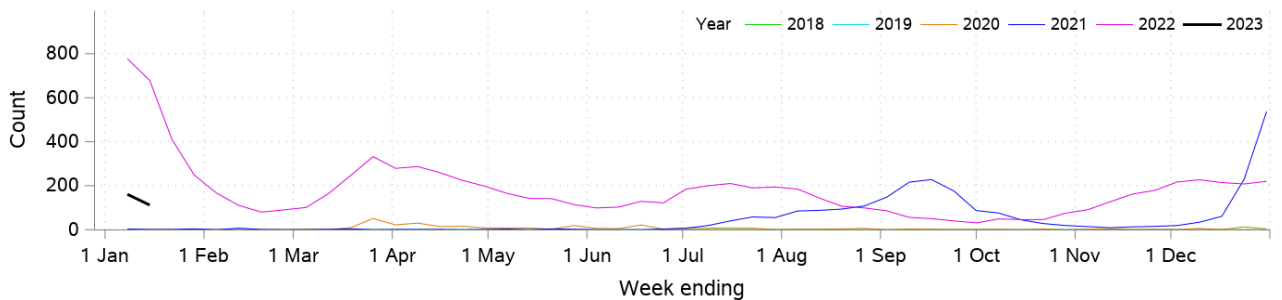


Figure 8: SARS coronavirus hospital admissions

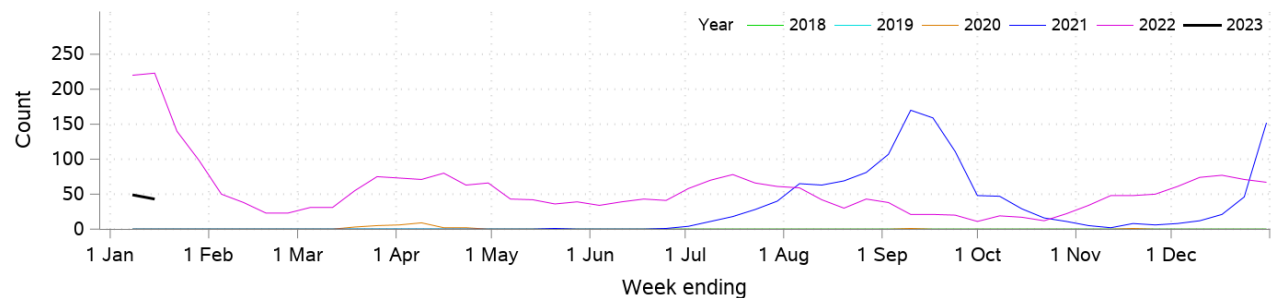


Figure 9: Pneumonia and ILI admissions

