

Key messages for local services

New cases: In the 6 days to 29 December there were **2,666** new COVID-19 cases notified in SESLHD residents, which is a decrease compared to the previous report, however this only includes cases up to Thursday 29 December; testing access may also have been affected due to the holidays; COVID-19 presentations to EDs are steady. COVID-19 notifications continue mainly in adults, with a higher proportion amongst women. There were 23 influenza notifications, a 64% decrease compared to last week (64 cases).

Deaths: There has been 1 COVID-19 related death reported since the last report but it is likely that deaths data haven't been updated due to the Christmas shutdown. The total number of COVID-19 related deaths in SESLHD is 703.

Aged & Disabled Care Facilities: Exposures and outbreaks in aged care facilities have increased again this week: 39 aged care facilities are under surveillance following recent COVID-19 exposure, with 28 experiencing an outbreak. There is one disability service under surveillance following a recent COVID-19 exposure.

Boarding Houses & Temporary Accommodation: There is currently two homeless shelters that are experiencing a COVID-19 outbreak.

Testing: COVID-19 PCR testing rates decreased across all LGAs and age groups again this week. The weekly positivity rate **increased** from 23.1% week ending 23 December to 30.3% week ending 30 December; all LGAs had increases in positivity except Waverley LGA. PCR tests represented 62% of all notifications.

Data summary

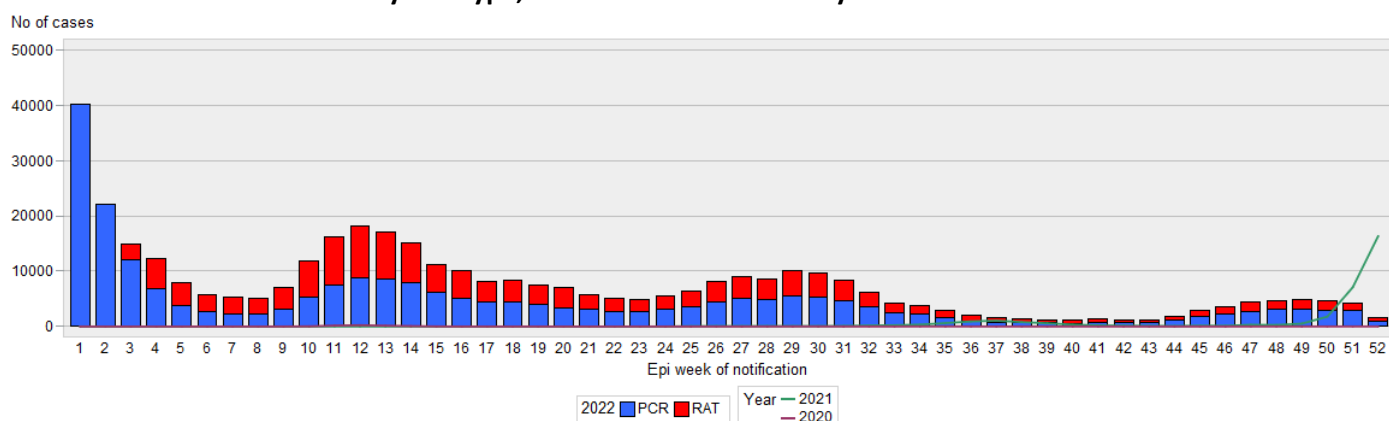
1. Case numbers

This data summary only includes data up to Thursday 29 December 2022

Table 1: SESLHD COVID PCR and RAT positive cases by LGA of residence and notification week

LGA	6 days	13 days	27 days	Total	6 day crude rate per 100,000*	Total crude rate per 100,000*
Bayside	475	1,190	2,814	75,392	238.8	37,896.3
Georges River	495	1,209	2,897	70,040	306.5	43,363.1
Randwick	408	1,070	2,647	72,748	265.0	47,247.2
Sutherland Shire	819	2,108	5,024	11,3622	342.4	47,496.5
Sydney	176	433	1,091	34,774	222.9	44,038.5
Waverley	144	388	920	33,361	196.4	45,510.5
Woollahra	149	354	774	23,967	259.8	41,782.0
SESLHD	2,666	6,752	16,167	423,904	274.7	43,684.78

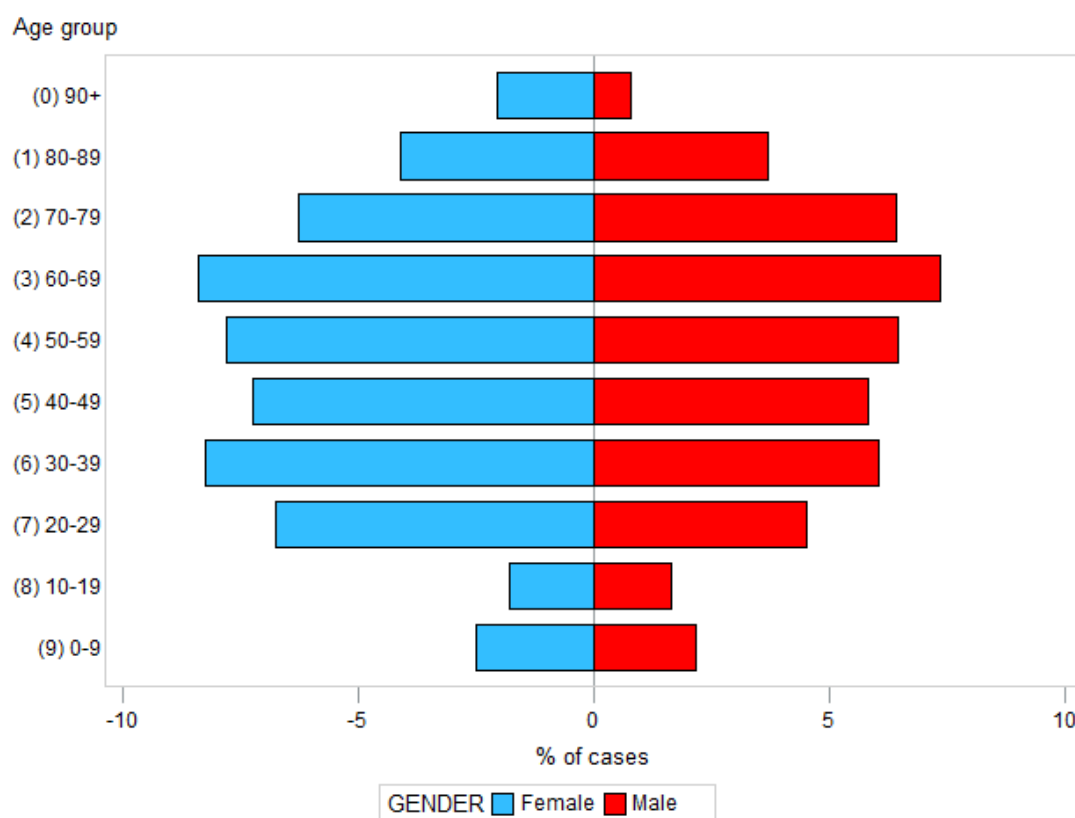
Figure 1: SESLHD COVID -19 cases by test type, week of notification and year*



*Data for week ending 31 December is incomplete due to data availability

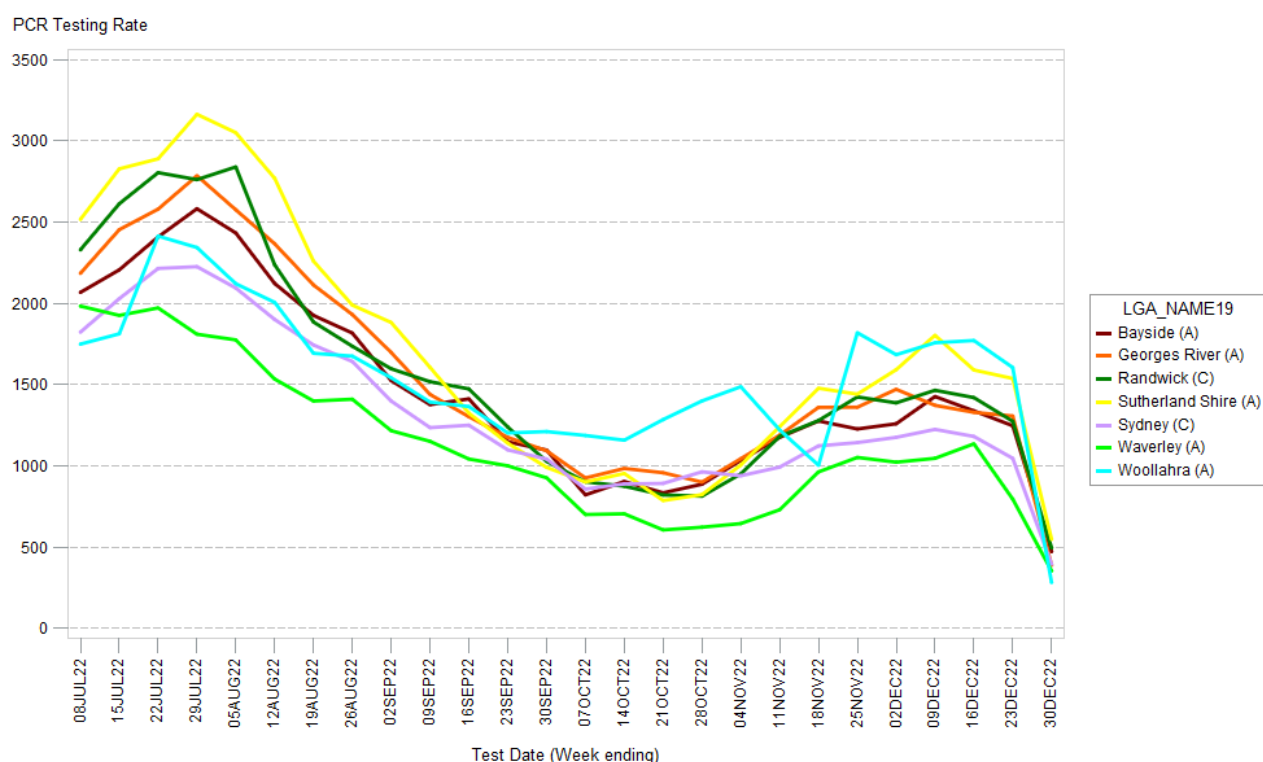
2. Demographic Data

Figure 2: Percentage of COVID cases in the last 7 days by age group and gender



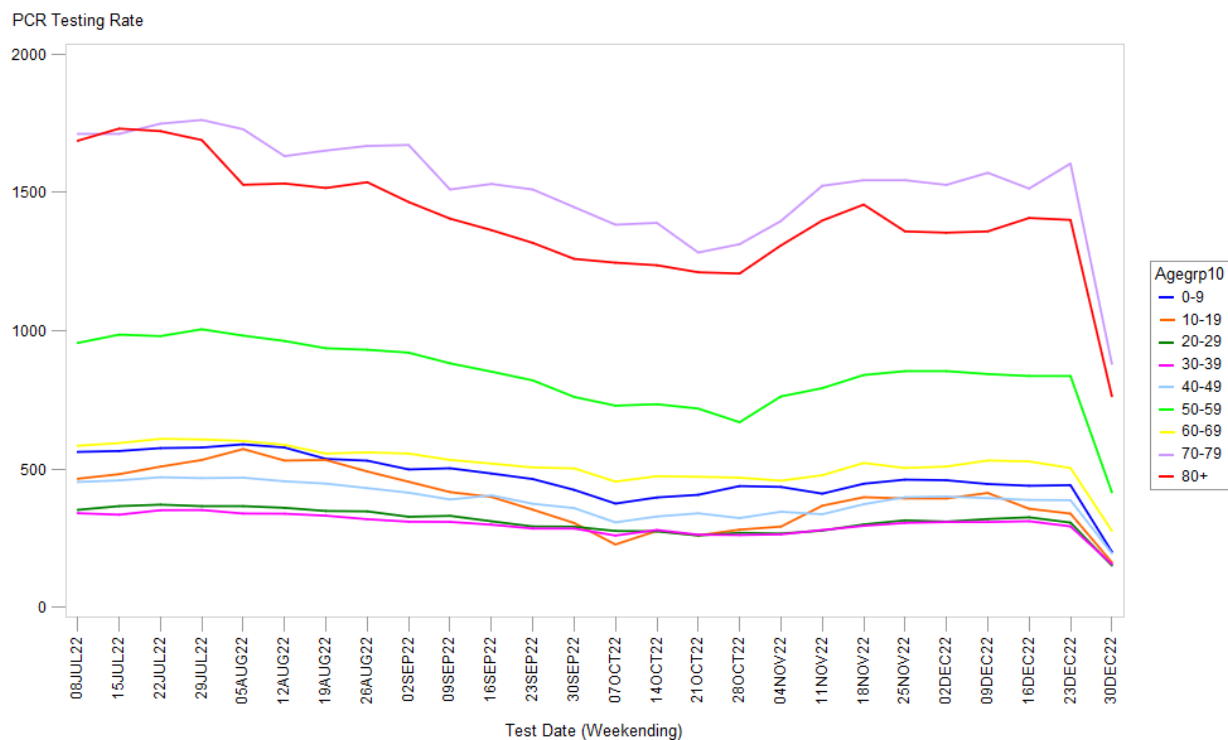
3. Testing Data

Figure 3: COVID-19 PCR weekly testing rate per 100,000 population and LGA of residence since July 2022*



*Data for week ending 30 December is incomplete due to data availability

Figure 4: COVID-19 weekly PCR testing rates per 100,000 population by age group since July 2022*



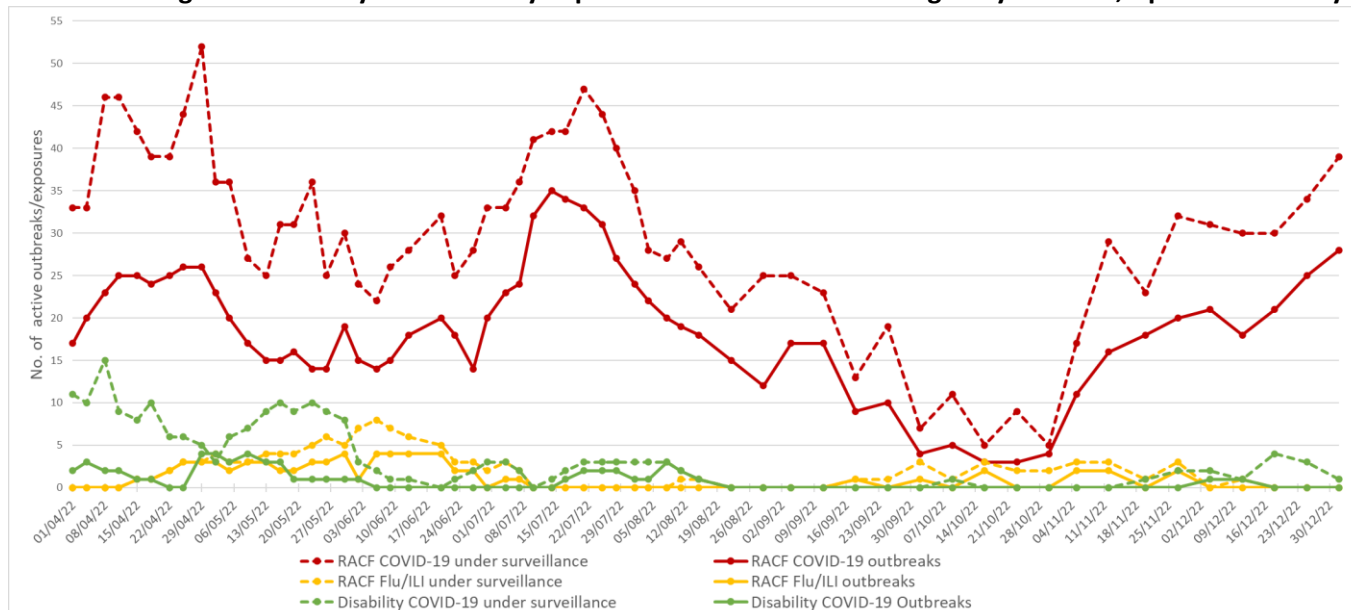
*Data for week ending 30 December is incomplete due to data availability

Table 2: COVID-19 weekly PCR positivity rate by LGA of residence

LGA	Week ending December 23 positivity rate (%)	Week ending December 30 positivity rate (%)
Bayside	23.6	30.8
Georges River	25.8	38.0
Randwick	22.7	25.9
Sutherland Shire	24.3	30.4
Sydney	21.5	26.7
Waverley	23.6	23.6
Woollahra	13.0	35.2

4. Residential facility outbreaks reported to the Public Health Unit

Figure 5: SESLHD aged care facility and disability exposures and outbreaks managed by the PHU, April to 1 January 2023



NB. 'Flu/ILI' outbreaks include outbreaks caused by RSV.

5. Emergency department presentations

Table 3: Emergency presentations within SESLHD week ending 30 December

Diagnosis / Category	Trend since last week	Compared to average for time of year (2017-2021)	Comment
Respiratory, fever and unspecified infection presentations	Steady	Similar	
Influenza like illness (ILI) presentations	Steady	Above	1.9 x higher than average
Coronaviruses/SARS	Steady	N/A	
Bronchiolitis presentations	Decreased	Below	0.7 x lower than average

Data is from NSW Public Health Rapid Emergency Department Surveillance System. Increase or decrease indicates change >20% compared to previous week

Figure 6: Presentations to ED due to influenza like illness

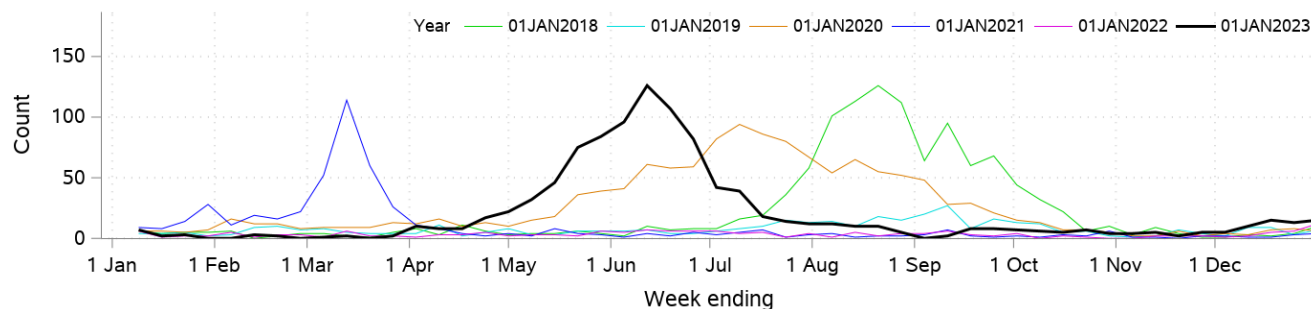


Figure 7: Presentations to ED due Coronaviruses/SARS

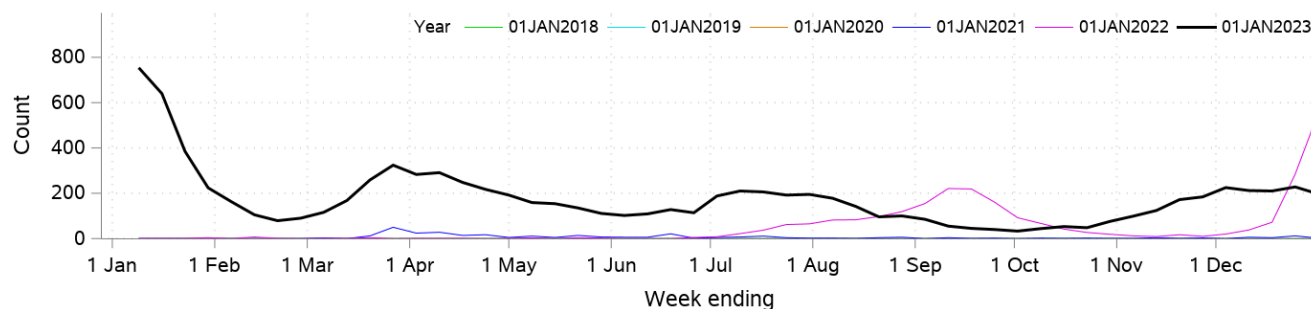


Figure 8: SARS coronavirus hospital admissions

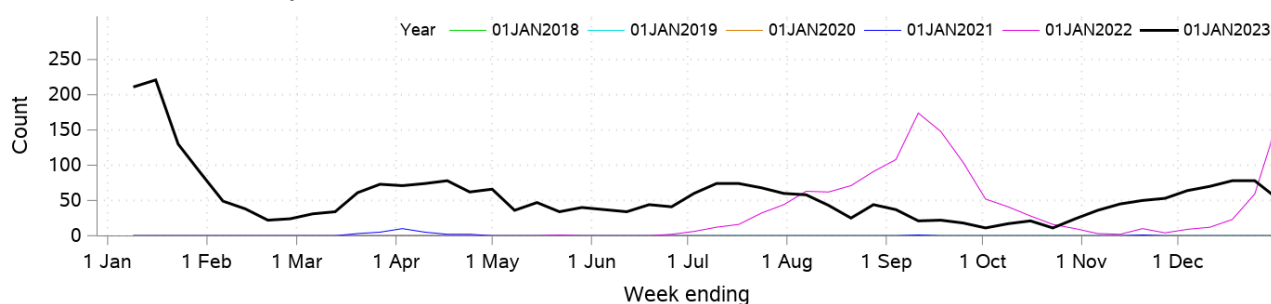


Figure 9: Pneumonia and ILI admissions

