



Key messages for local services

New cases: In the 7 days to 27 January there were **876** new COVID-19 cases notified in SESLHD residents, which is a **16% decrease** compared to the previous report. COVID-19 notifications continue mainly in adults, with a higher proportion among women. COVID-19 and ILI presentations to EDs are steady but there has been an increase in bronchiolitis presentations. Influenza notifications are steady with 42 notifications.

Deaths: There have been 4 COVID-19 related deaths reported in the past week. The total number of COVID-19 related deaths in SESLHD is 748.

Aged & Disabled Care Facilities: Exposures and outbreaks in aged care facilities were steady this week: 10 aged care facilities are under surveillance following recent COVID-19 exposure, with five experiencing an outbreak. There are no disability services with a recent COVID-19 exposure.

Boarding Houses & Temporary Accommodation: There is no temporary accommodation facility with a recent exposure to COVID-19.

Testing: COVID-19 PCR testing rates continued to decrease across all LGAs and age groups this week. The weekly positivity rate **increased** from 8.4% week ending 20 January to 11.1% week ending 27 January; all LGAs increased in positivity except Sydney, Waverley and Woollahra LGAs. PCR tests represented 60% of all notifications.

There is still a highly mixed group of variants circulating, the BR.2 variant is the most common followed by XBF.

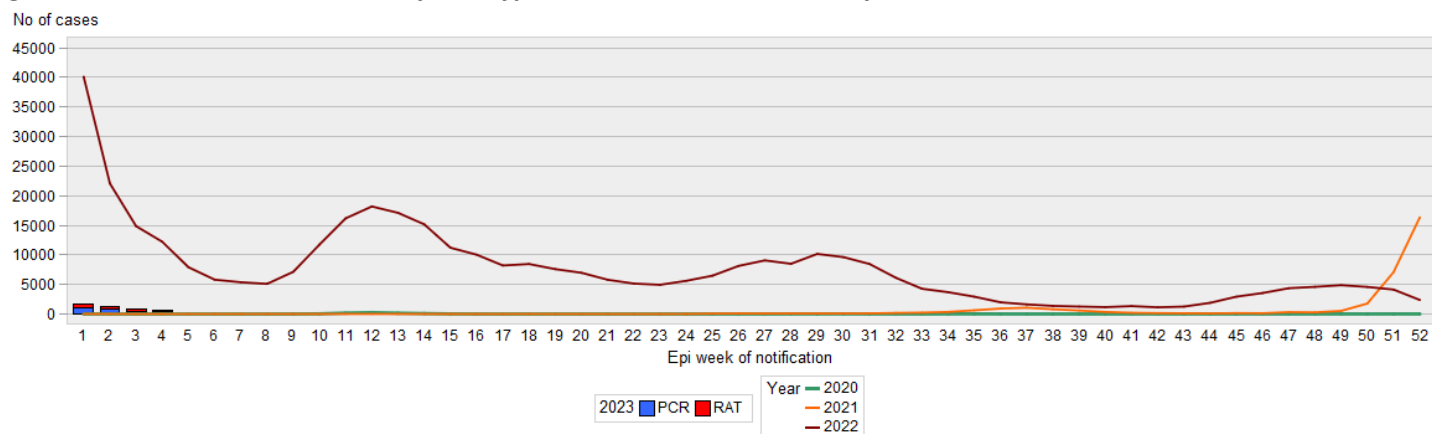
Data summary

1. Case numbers

Table 1: SESLHD COVID PCR and RAT positive cases by LGA of residence and notification week

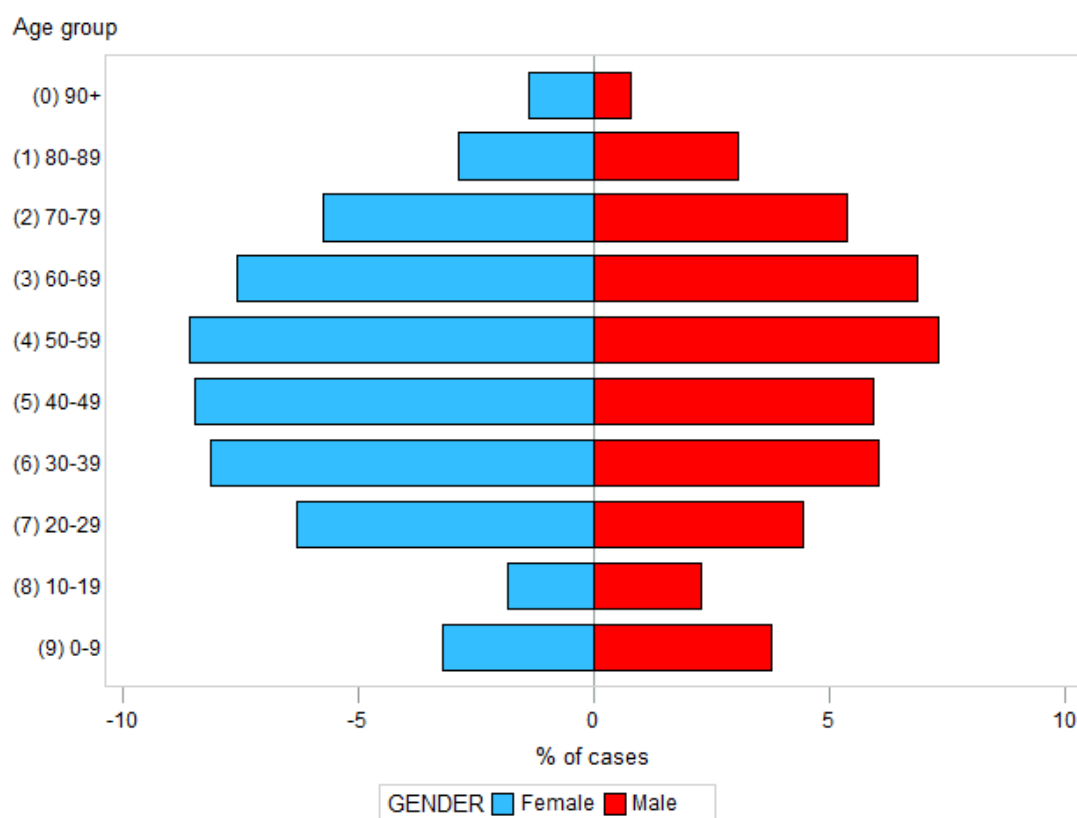
LGA	7 days	14 days	28 days	Total	7 day crude rate per 100,000*	Total crude rate per 100,000*
Bayside	148	329	939	76,350	74.4	38,377.8
Georges River	145	323	966	71,045	89.8	43,985.3
Randwick	169	351	988	73,751	109.8	47,898.7
Sutherland Shire	271	509	1,313	114,959	113.3	48,055.4
Sydney	50	134	368	35,154	63.3	44,519.8
Waverley	50	120	311	33,677	68.2	45,941.6
Woollahra	43	90	295	24,266	75.0	42,303.3
SESLHD	876	1,856	5,180	429,202	90.3	44,230.8

Figure 1: SESLHD COVID -19 cases by test type, week of notification and year



2. Demographic Data

Figure 2: Percentage of COVID cases in the last 7 days by age group and gender



3. Testing Data

Figure 3: COVID-19 PCR weekly testing rate per 100,000 population and LGA of residence since July 2022

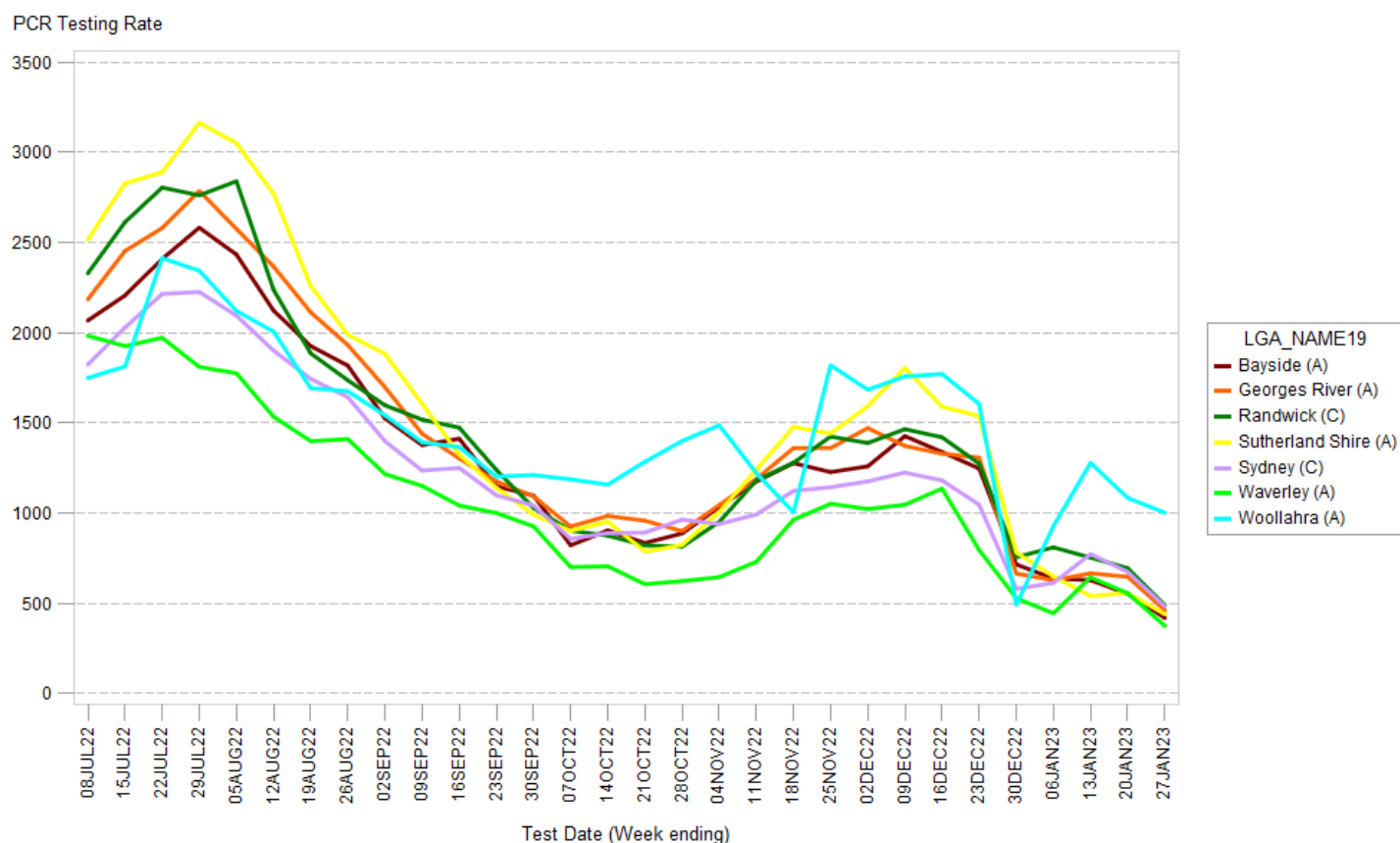


Figure 4: COVID-19 weekly PCR testing rates per 100,000 population by age group since July 2022

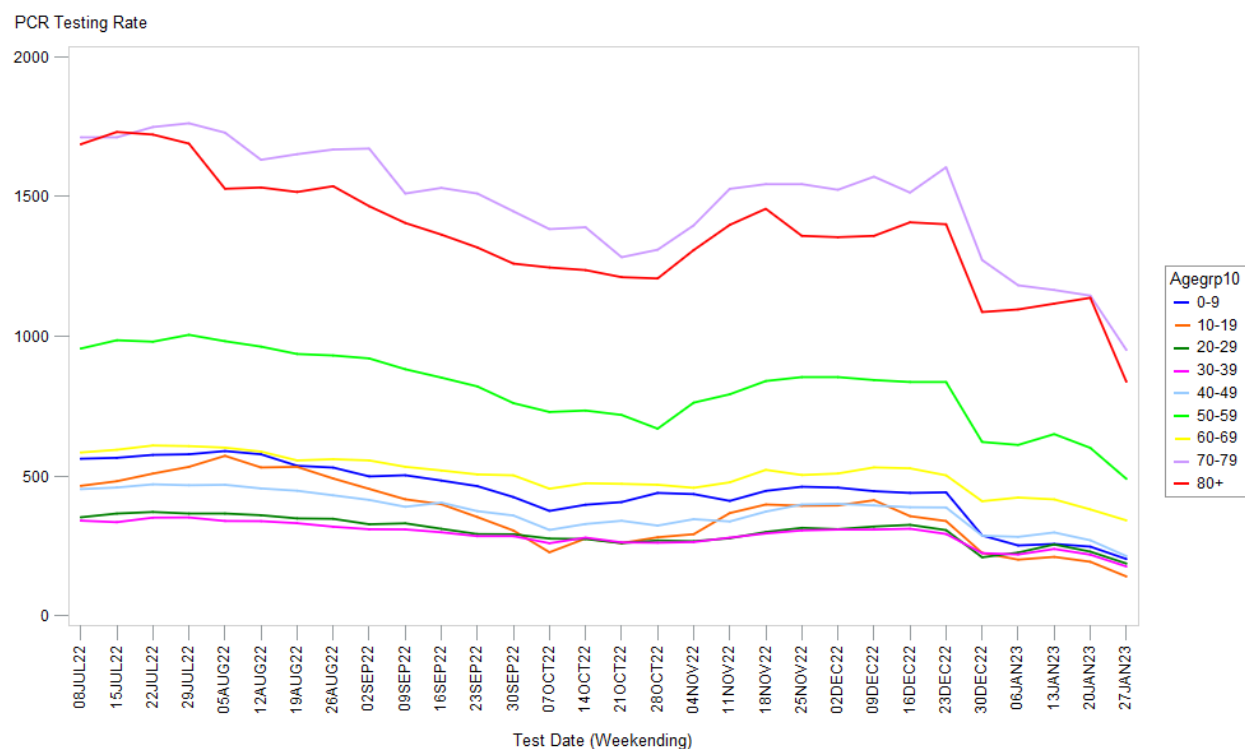
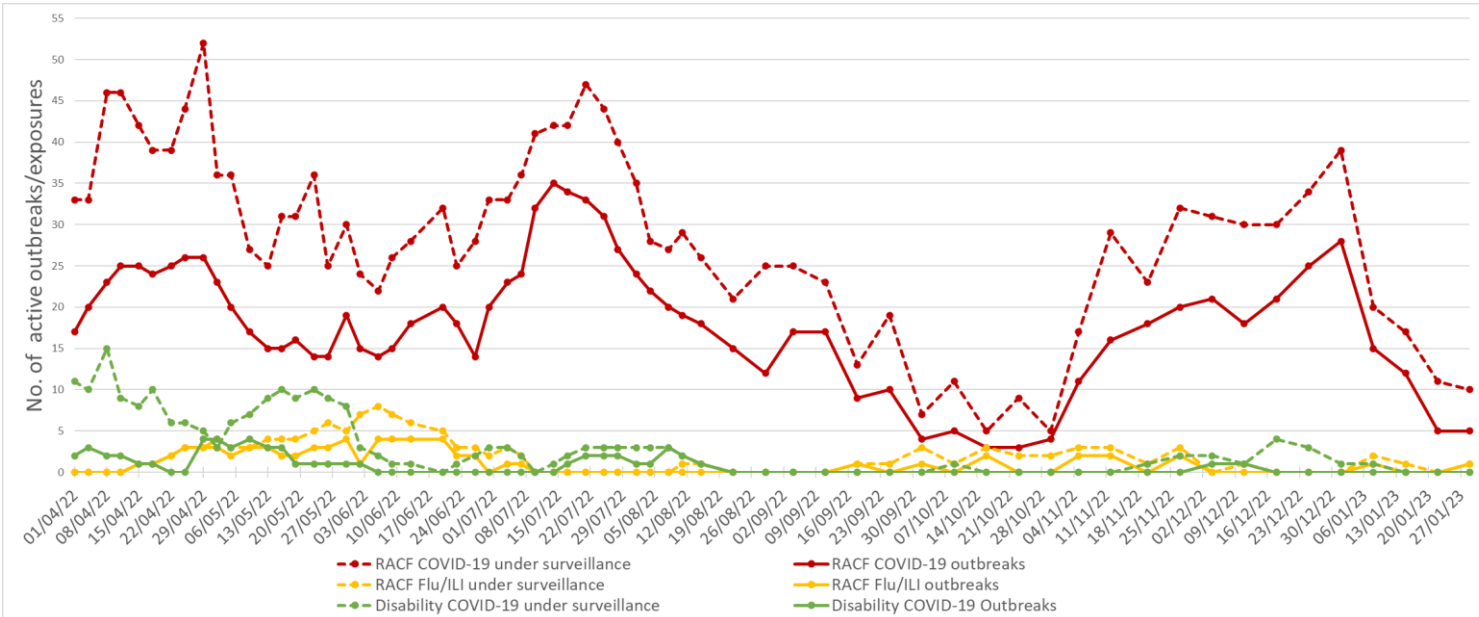


Table 2: COVID-19 weekly PCR positivity rate by LGA of residence

LGA	Week ending January 20, positivity rate (%)	Week ending January 27, positivity rate (%)
Bayside	8.9	12.6
Georges River	10.1	11.7
Randwick	7.2	13.7
Sutherland Shire	9.3	14.5
Sydney	9.6	5.9
Waverley	8.8	7.4
Woollahra	3.8	3.6

4. Residential facility outbreaks reported to the Public Health Unit

Figure 5: SESLHD aged care facility and disability exposures and outbreaks managed by the PHU, April to 22 January 2023



NB. 'Flu/ILI' outbreaks include outbreaks caused by RSV.

5. Emergency department presentations

Table 3: Emergency presentations within SESLHD week ending 22 January 2023

Diagnosis / Category	Trend since last week	Compared to average for time of year (2017-2021)	Comment
Respiratory, fever and unspecified infection presentations	Steady	Similar	
Influenza like illness (ILI) presentations	Steady	Above	1.3 x higher than average
Coronaviruses/SARS	Steady	N/A	
Bronchiolitis presentations	Increased	Above	2.3 x higher than last week 1.5 x higher than average

Data is from NSW Public Health Rapid Emergency Department Surveillance System. Increase or decrease indicates change >20% compared to previous week

Figure 6: Presentations to ED due to influenza like illness

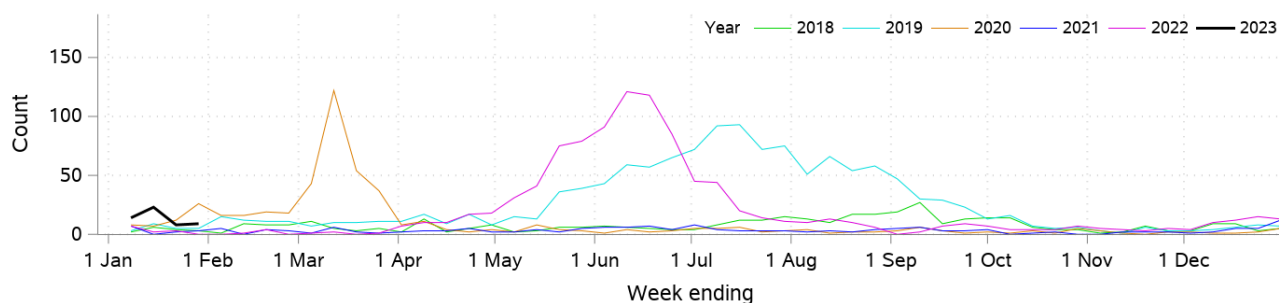


Figure 7: Presentations to ED due to Coronaviruses/SARS

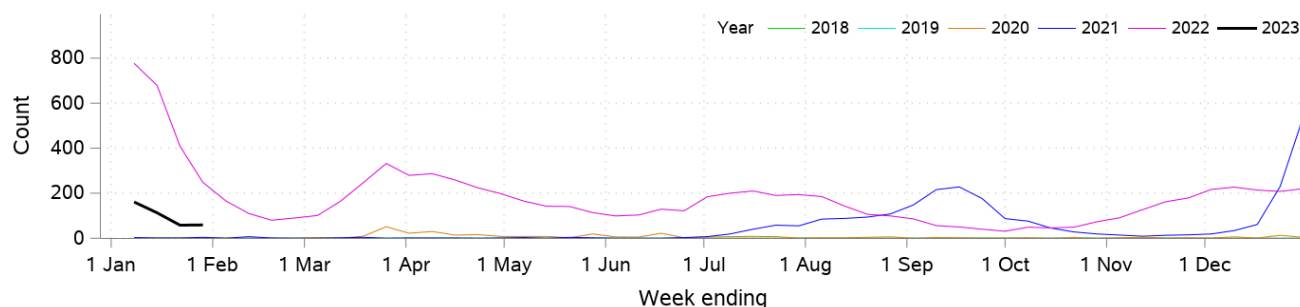


Figure 8: SARS coronavirus hospital admissions

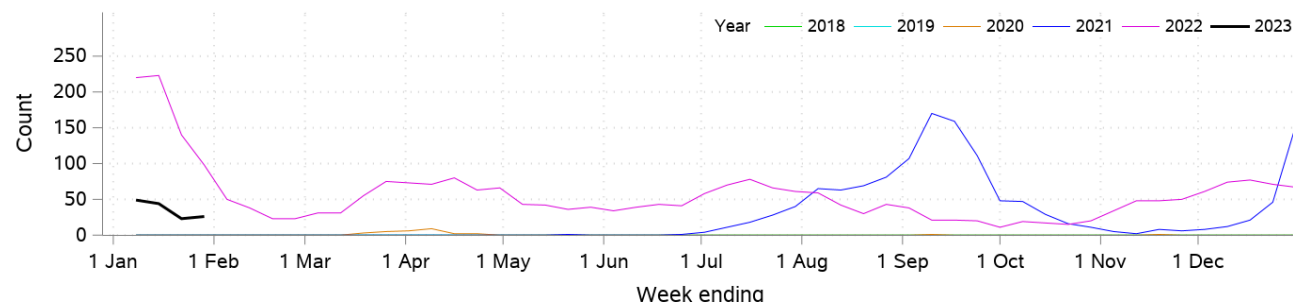


Figure 9: Pneumonia and ILI admissions

