



Key messages for local services

New cases: In the 7 days to 6 January there were **2,047** new COVID-19 cases notified in SESLHD residents, which is a 23.2% decrease compared to the previous report. COVID-19 notifications continue mainly in adults, with a higher proportion amongst women. COVID-19 presentations to EDs are steady. There were 83 influenza notifications, a significant increase compared to last week (23 cases), this is likely due to incomplete data over the holiday period.

Deaths: There has been 13 COVID-19 related death reported since the last report, although this sudden increase is likely due to delays in reporting over the holiday period. The total number of COVID-19 related deaths in SESLHD is 718.

Aged & Disabled Care Facilities: Exposures and outbreaks in aged care facilities decreased this week: 20 aged care facilities are under surveillance following recent COVID-19 exposure, with 15 experiencing an outbreak. There is one disability service under surveillance following a recent COVID-19 exposure.

Boarding Houses & Temporary Accommodation: There is currently no boarding houses or temporary accommodation facilities with a recent exposure to COVID-19.

Testing: COVID-19 PCR testing rates decreased across all LGAs and age groups again this week, except Woollahra. The weekly positivity rate **decreased** from 25.3% week ending 30 December 2022 to 19.0% week ending 6 January 2023; all LGAs had decreases in positivity except Waverley LGA. PCR tests represented 64% of all notifications.

There is still a highly mixed group of sub-variants circulating, the BR.2 sub variant is the most common. NSW Health continues to monitor emerging sub-variants including XBB.1.5, of which there have been a small number of detections in the two weeks to 24 December 2022.

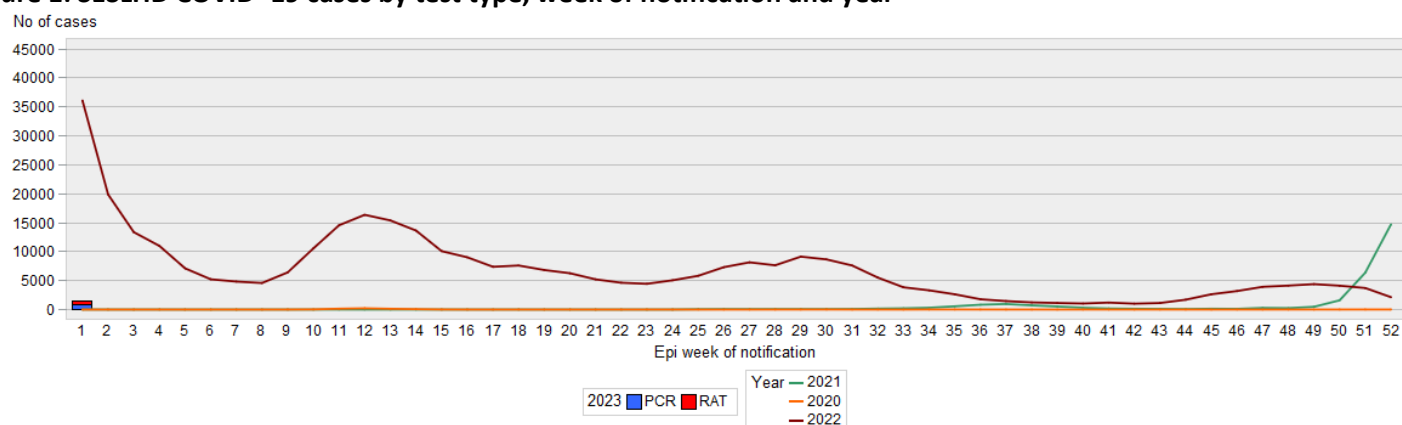
Data summary

1. Case numbers

Table 1: SESLHD COVID PCR and RAT positive cases by LGA of residence and notification week

LGA	7 days	14 days	28 days	Total	7 day crude rate per 100,000*	Total crude rate per 100,000*
Bayside	399	893	2,431	75,810	201	38,106
Georges River	360	894	2,434	70,439	223	43,610
Randwick	371	794	2,238	73,134	241	47,498
Sutherland Shire	524	1,366	4,135	114,169	219	47,725
Sydney	146	335	899	34,933	185	44,240
Waverley	119	268	743	33,485	162	45,680
Woollahra	128	281	692	24,099	223	42,012
SESLHD	2,047	4,831	13,572	426,069	211	43,908

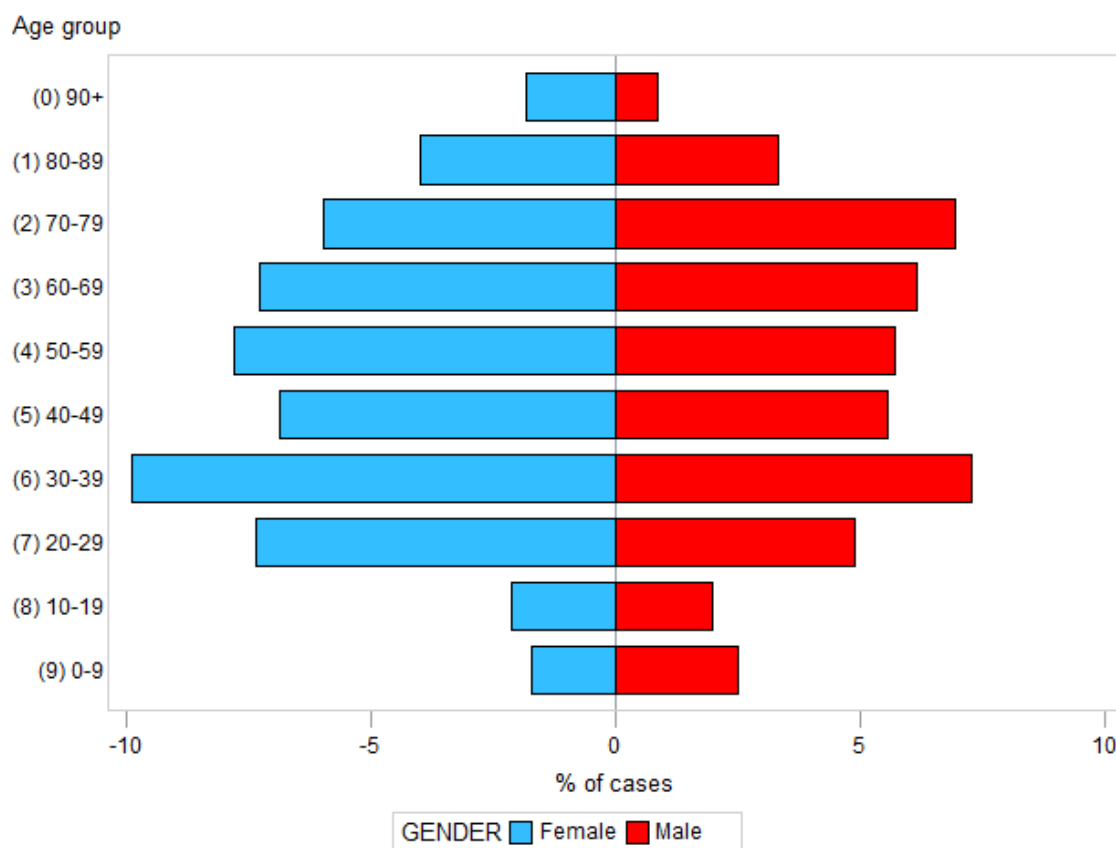
Figure 1: SESLHD COVID -19 cases by test type, week of notification and year*



*Data for week ending 6 January is incomplete due to data availability

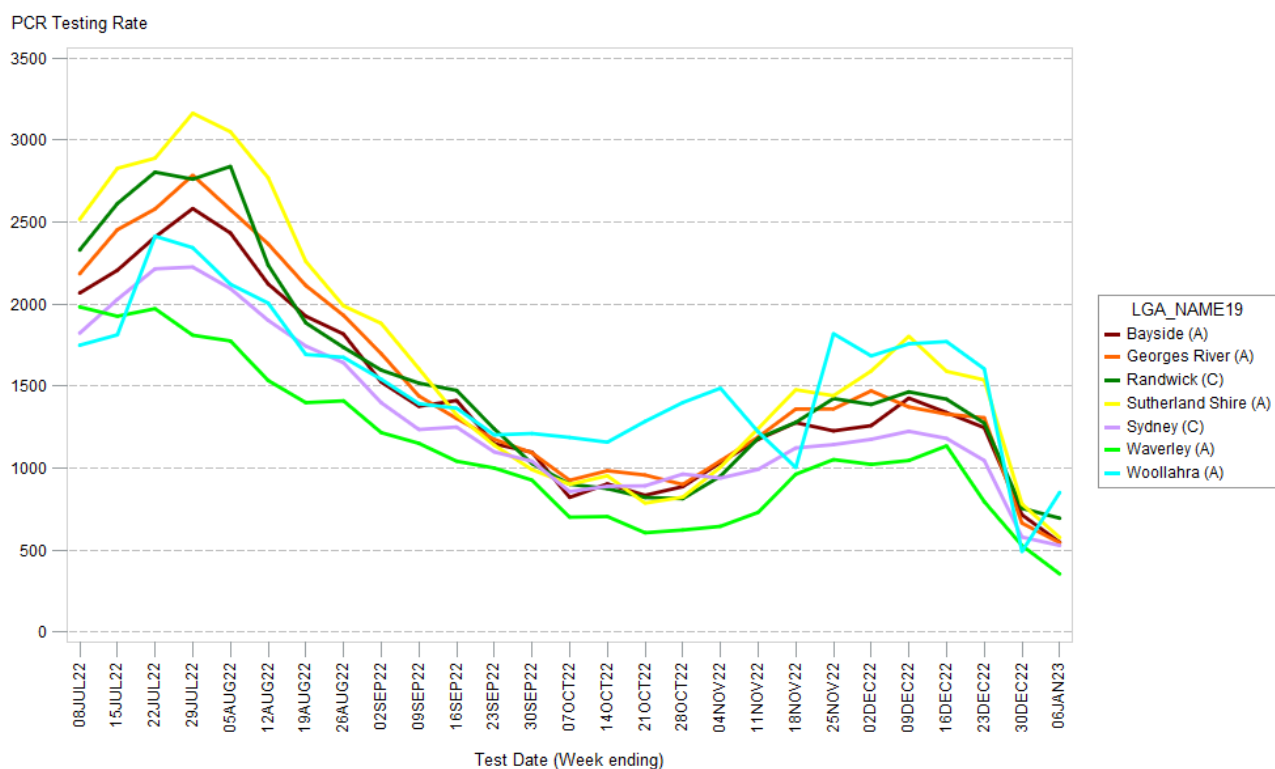
2. Demographic Data

Figure 2: Percentage of COVID cases in the last 7 days by age group and gender



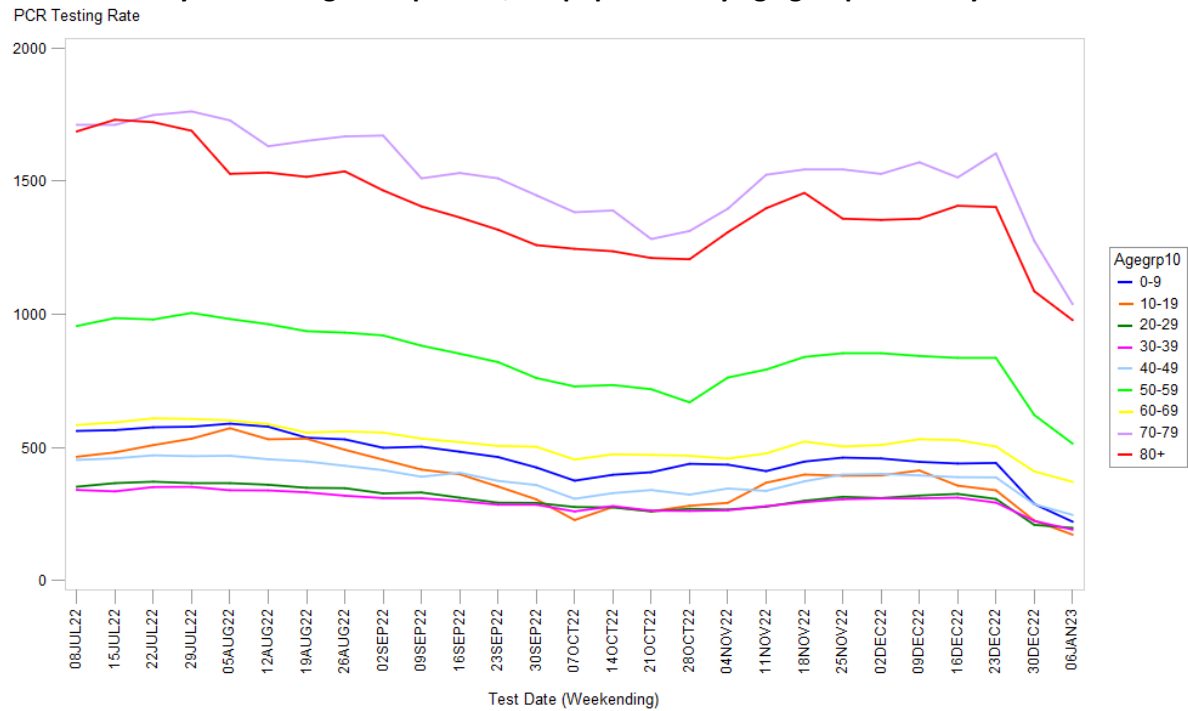
3. Testing Data

Figure 3: COVID-19 PCR weekly testing rate per 100,000 population and LGA of residence since July 2022*



*Data for week ending 6 January is incomplete due to data availability

Figure 4: COVID-19 weekly PCR testing rates per 100,000 population by age group since July 2022*



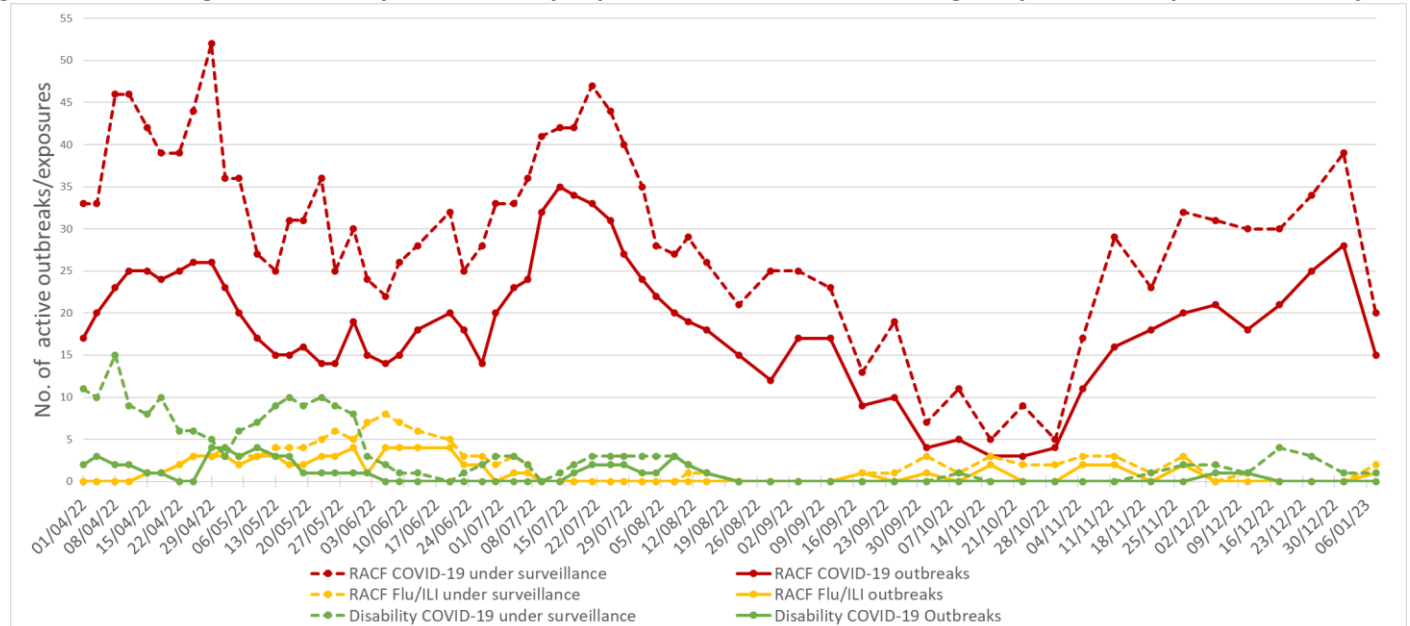
*Data for week ending 6 January is incomplete due to data availability

Table 2: COVID-19 weekly PCR positivity rate by LGA of residence

LGA	Week ending December 30, 2022, positivity rate (%)	Week ending January 6, 2023, positivity rate (%)
Bayside	25.2	23.4
Georges River	30.5	23.0
Randwick	22.3	16.8
Sutherland Shire	25.5	23.4
Sydney	23.6	16.5
Waverley	19.8	23.5
Woollahra	27.9	10.7

4. Residential facility outbreaks reported to the Public Health Unit

Figure 5: SESLHD aged care facility and disability exposures and outbreaks managed by the PHU, April to 8 January 2023



NB. 'Flu/ILI' outbreaks include outbreaks caused by RSV.

5. Emergency department presentations

Table 3: Emergency presentations within SESLHD week ending 8 January 2023

Diagnosis / Category	Trend since last week	Compared to average for time of year (2017-2021)	Comment
Respiratory, fever and unspecified infection presentations	Steady	Similar	
Influenza like illness (ILI) presentations	Steady	Above	2.6 x higher than average
Coronaviruses/SARS	Steady	N/A	
Bronchiolitis presentations	Decreased	Below	0.7 x lower than average

Data is from NSW Public Health Rapid Emergency Department Surveillance System. Increase or decrease indicates change >20% compared to previous week

Figure 6: Presentations to ED due to influenza like illness

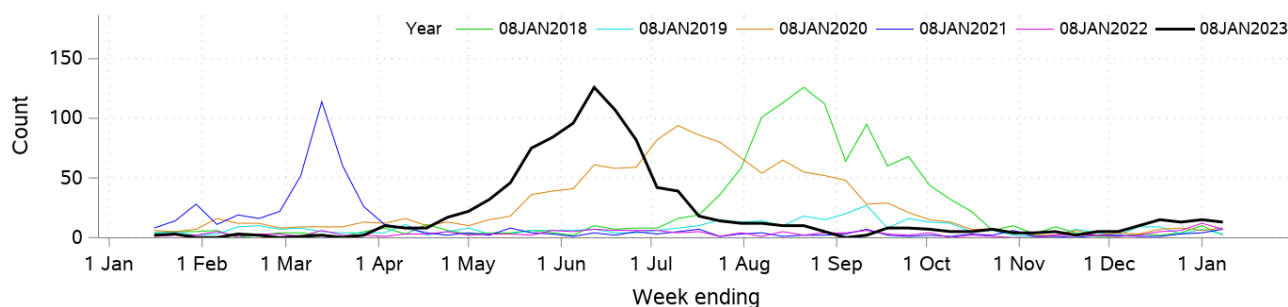


Figure 7: Presentations to ED due Coronaviruses/SARS

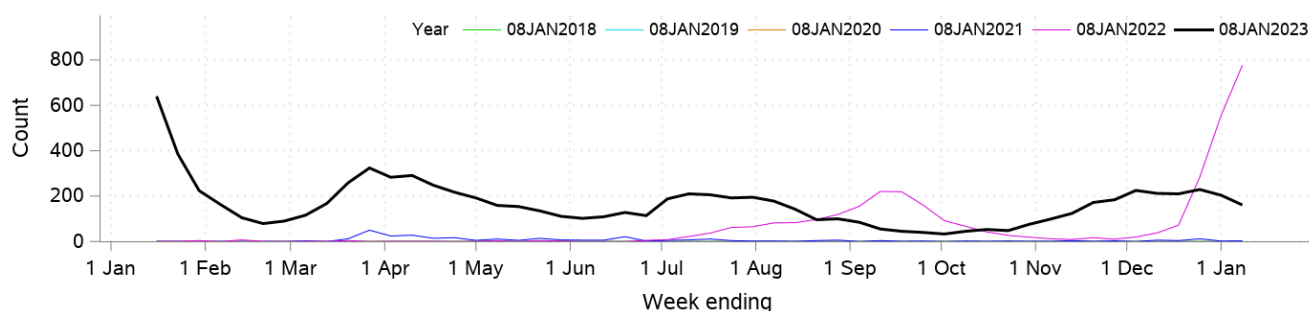


Figure 8: SARS coronavirus hospital admissions

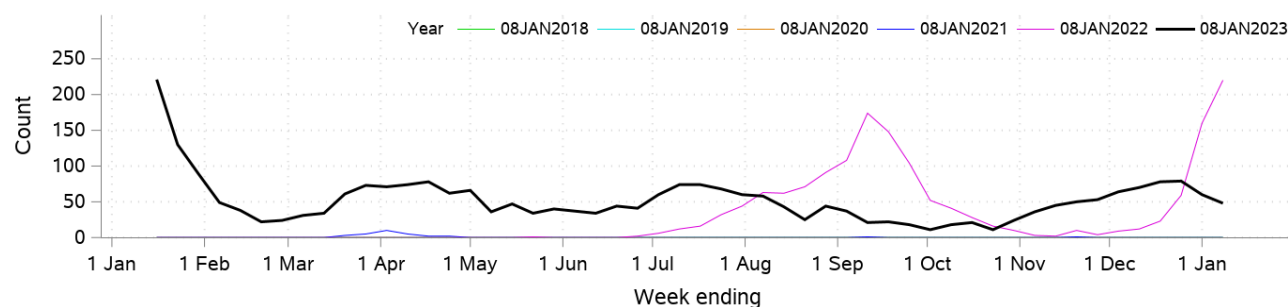


Figure 9: Pneumonia and ILI admissions

