

### Key messages for local services

**New cases:** In the past 7 days **3,120** new COVID-19 cases were notified in SESLHD residents, which is a **55% increase** compared to the previous report. COVID-19 notifications continue mainly in adults. The number of influenza cases remains low with only 17 cases.

**Deaths:** There were 3 COVID-19 related deaths reported among SESLHD residents (median age 81 years). Two were vaccinated and one was unvaccinated. The total number of COVID-19 related deaths in SESLHD is 667.

**Aged & Disabled Care Facilities:** Twenty nine aged care facilities are under surveillance following recent COVID-19 exposure, with 16 experiencing an outbreak. There are currently 3 aged care facilities under surveillance for other respiratory viruses: 2 with an RSV outbreak and 1 with a rhinovirus exposure. There are no disability services with recent exposure to COVID-19.

**Boarding Houses & Temporary Accommodation:** There are no temporary accommodation facilities with recent exposures.

**Testing:** COVID-19 PCR testing rates increased across most LGAs in SESLHD this week, except for Woollahra which saw a decrease and Sydney where it remains steady. Testing rates increased mostly in 50-59, 70-79 and 80+ age groups with testing steady or decreasing in other age groups. Positivity rate increased from 15.9% last week to a peak of 18.8% on 8 November; all LGAs had notable increases in positivity. PCR tests represented 66% of all notifications.

The most recent NSW data indicates that newer Omicron subvariants continue to emerge and increase, with BA.2 derived subvariants making up 49% of cases.

### Data summary

#### 1. Case numbers

**Table 1: SESLHD COVID PCR and RAT positive cases by LGA of residence and notification week**

LGA	7 days	14 days	28 days	Total	7 day crude rate per 100,000*	Total crude rate per 100,000*
Bayside	511	879	1,297	70,674	257	35,525
Georges River	555	924	1,329	65,106	344	40,308
Randwick	545	886	1,232	68,192	354	44,288
Sutherland Shire	886	1,493	2,095	105,535	370	44,116
Sydney	264	386	585	32,880	334	41,640
Waverley	210	342	464	31,722	287	43,275
Woollahra	149	251	361	22,600	260	39,399
<b>SESLHD</b>	<b>3,120</b>	<b>5,161</b>	<b>7,363</b>	<b>396,709</b>	<b>322</b>	<b>40,882</b>

**Table 2: SESLHD influenza positive cases by LGA of residence and notification week**

LGA	7 days	14 days	28 days	Total for 2022	7 day crude rate per 100,000*	2022 total crude rate per 100,000
Bayside	.	2	10	2,090	.	1,051
Georges River	1	3	9	1,372	0.6	849
Randwick	4	8	9	1,717	2.6	1,115
Sutherland Shire	5	10	25	4,202	2.1	1,757
Sydney	1	3	9	644	1.3	816
Waverley	3	7	9	1,044	4.1	1,424
Woollahra	3	3	6	914	5.2	1,593
<b>SESLHD</b>	<b>17</b>	<b>36</b>	<b>77</b>	<b>11,983</b>	<b>1.8</b>	<b>1,235</b>

\*based on DPIE LGA projections data 2021.

Figure 1: SESLHD COVID -19 cases by test type , week of notification and year

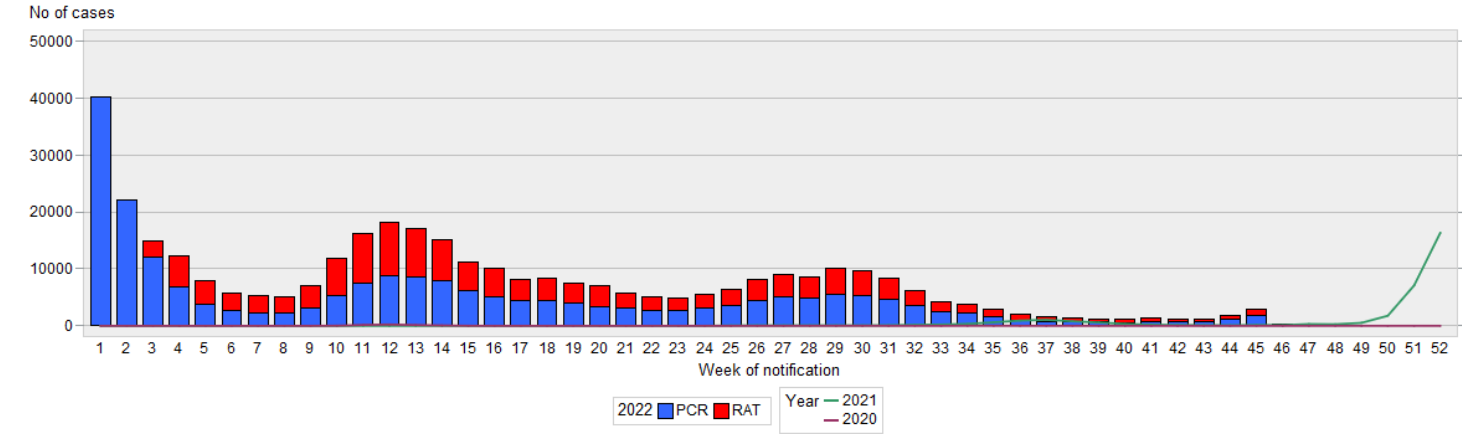
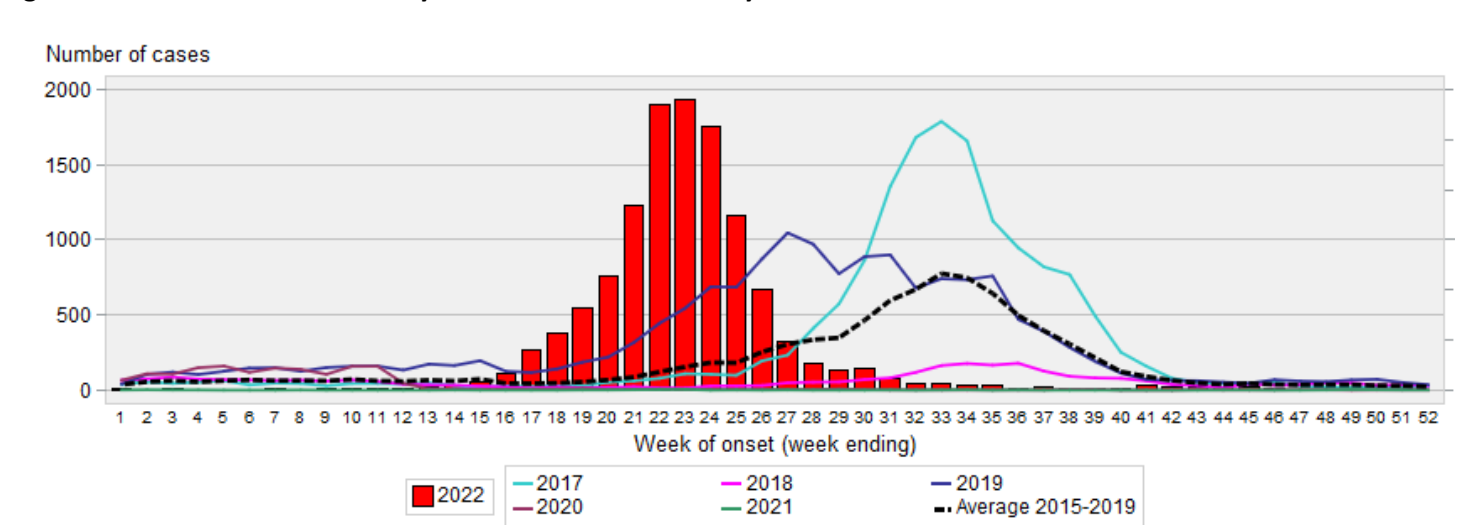
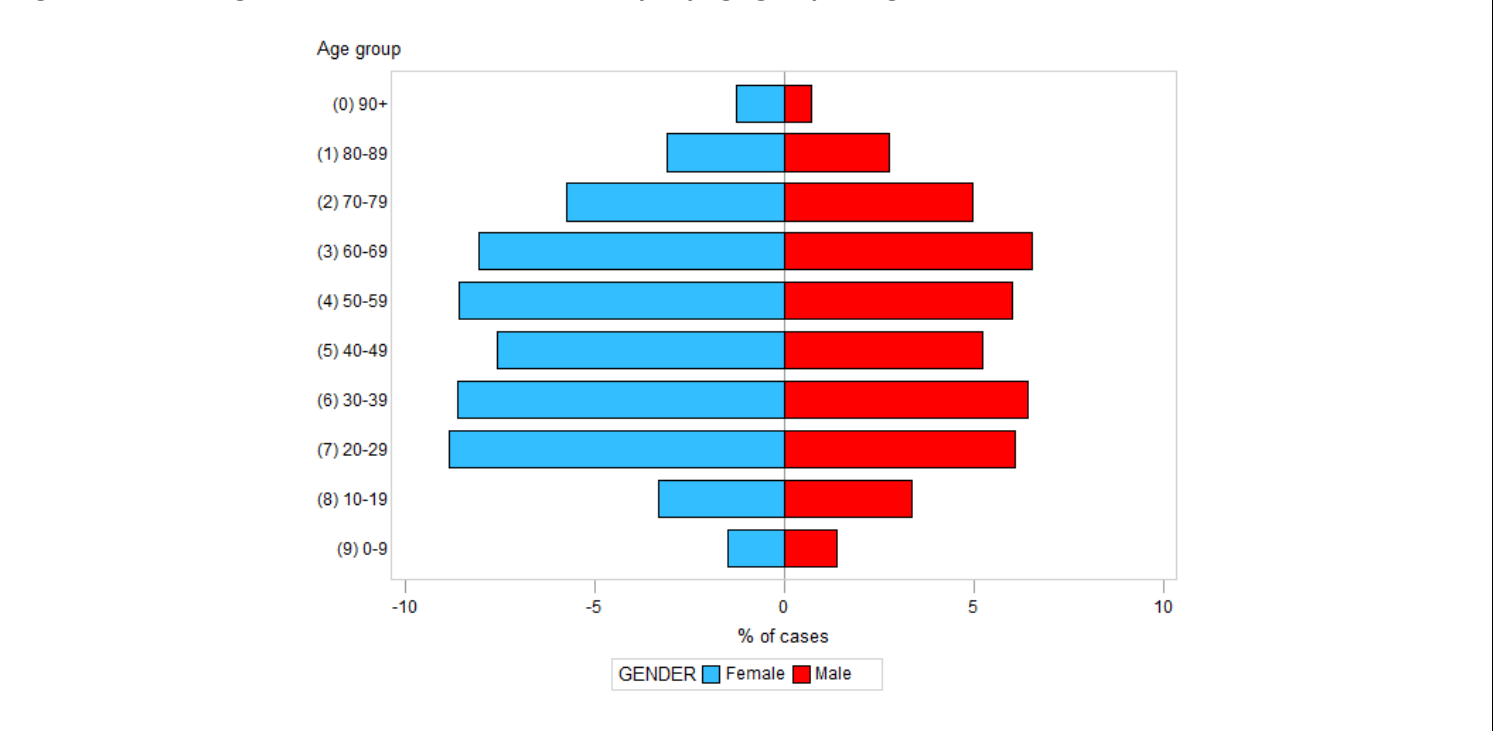


Figure 2: SESLHD influenza cases by week of notification and year



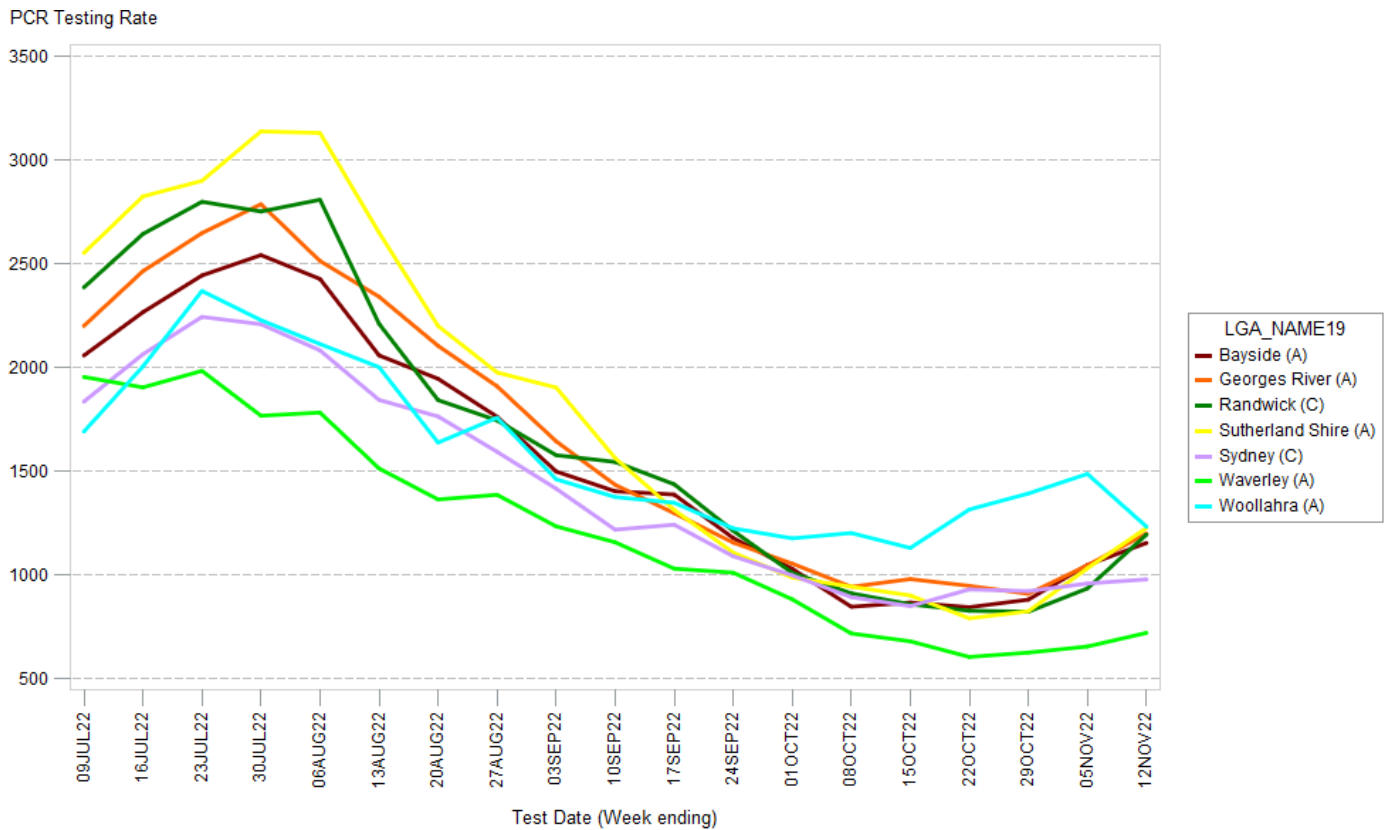
2. Demographic Data

Figure 3: Percentage of COVID cases in the last 7 days by age group and gender

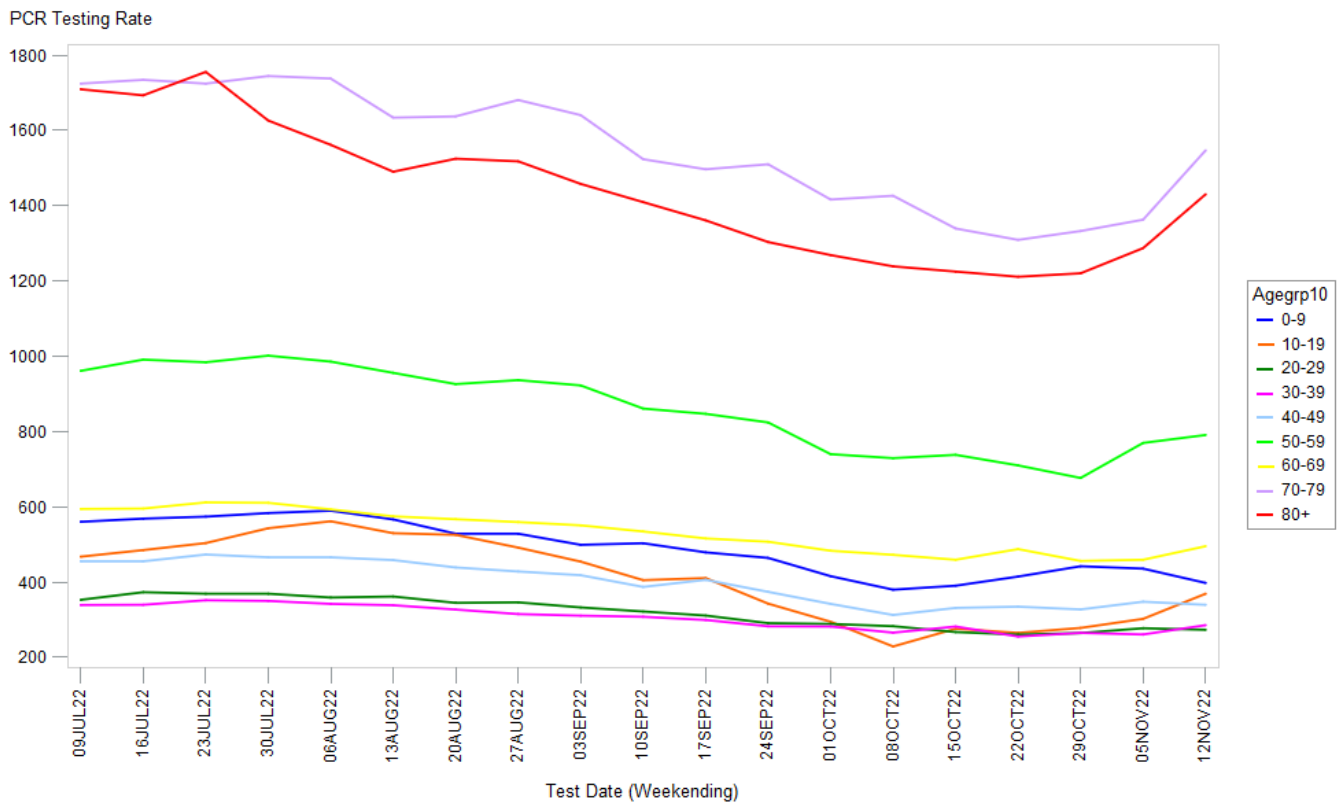


### 3. Testing Data

**Figure 4: COVID-19 PCR weekly testing rate per 100,000 population and LGA of residence since July 2022**



**Figure 5: COVID-19 weekly testing rates per 100,000 population by age group since July 2022**

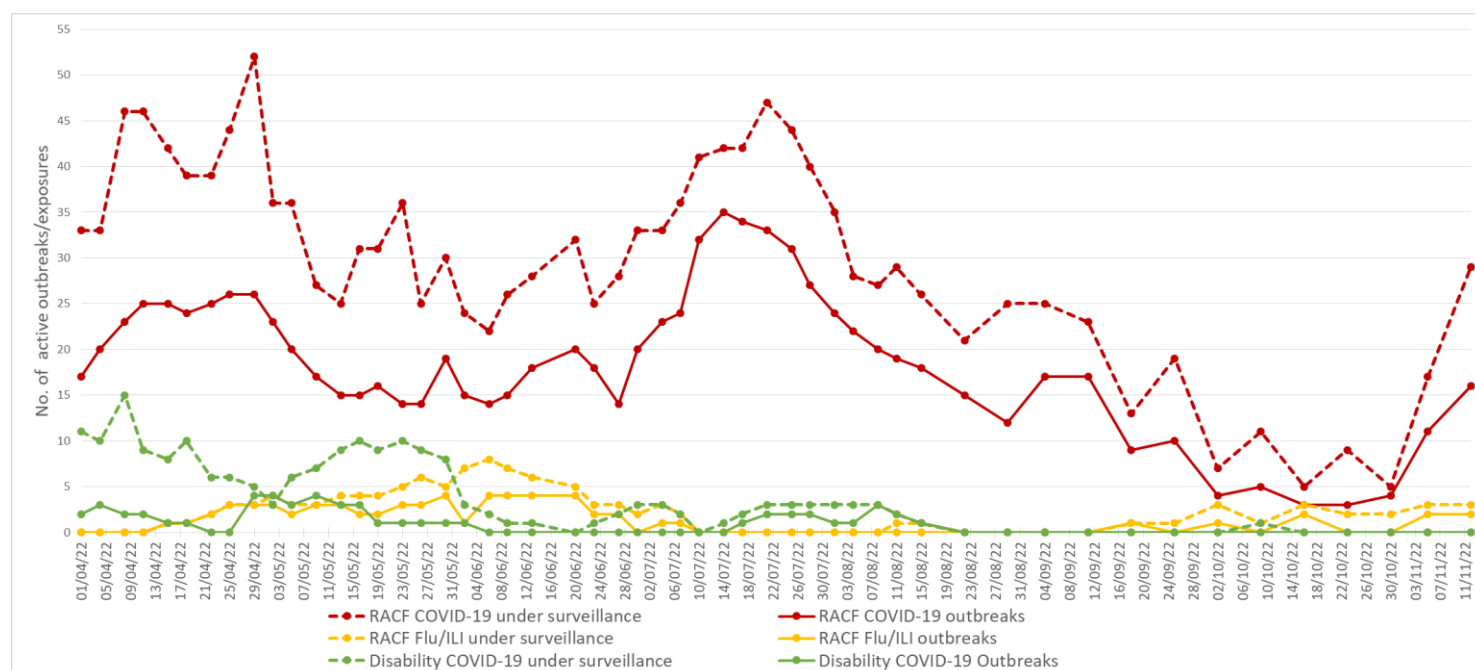


**Table 3: COVID-19 weekly PCR positivity rate by LGA of residence**

LGA	Week ending November 5 positivity rate (%)	Week ending November 12 positivity rate (%)
Bayside	13.1	17.3
Georges River	15.9	21.0
Randwick	13.2	16.5
Sutherland Shire	14.8	18.4
Sydney	8.6	16.7
Waverley	11.8	16.0
Woollahra	4.2	10.1

#### 4. Residential facility outbreaks reported to the Public Health Unit

**Figure 5: SESLHD aged care facility and disability exposures and outbreaks managed by the PHU, April to 13 November 2022**



NB. 'Flu/ILI' outbreaks include outbreaks caused by RSV.

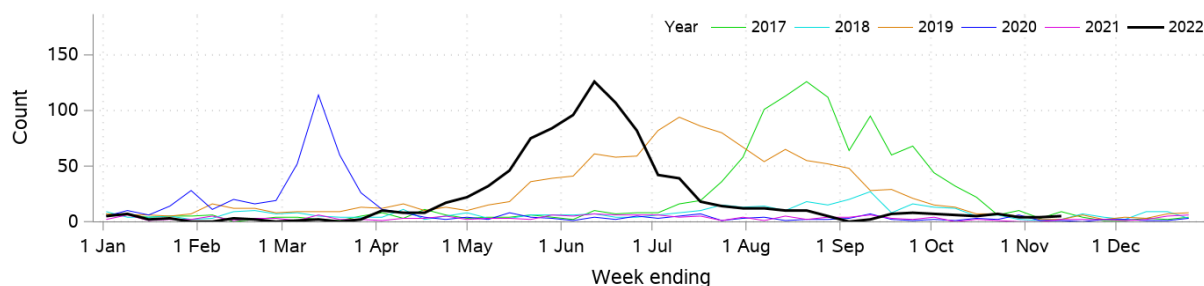
## 5. Emergency department presentations

**Table 4: Emergency presentations within SESLHD**

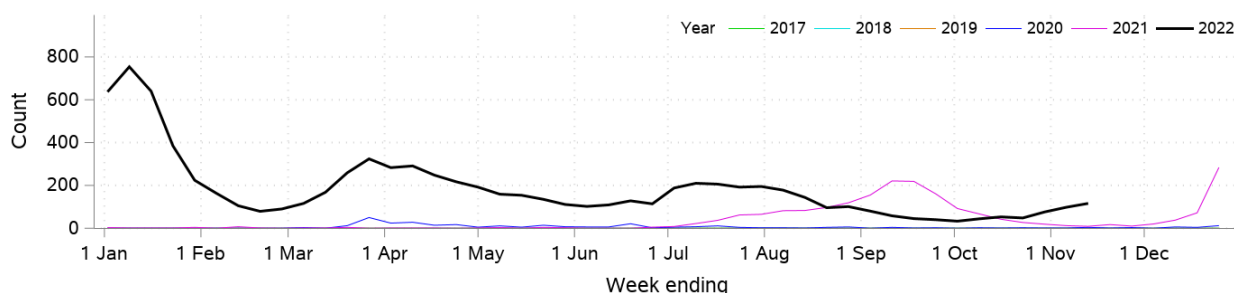
Diagnosis / Category	Trend since last week	Compared to average for time of year (2017-2021)	Comment
Respiratory, fever and unspecified infection presentations	Similar	Similar	
Influenza like illness (ILI) presentations	Higher	Above	1.7x higher than usual*
Coronaviruses/SARS	Similar	N/A	
Bronchiolitis presentations	Similar	Similar	

Data is from NSW Public Health Rapid Emergency Department Surveillance System. Increase or decrease indicates change >20% compared to previous week  
\*very small numbers

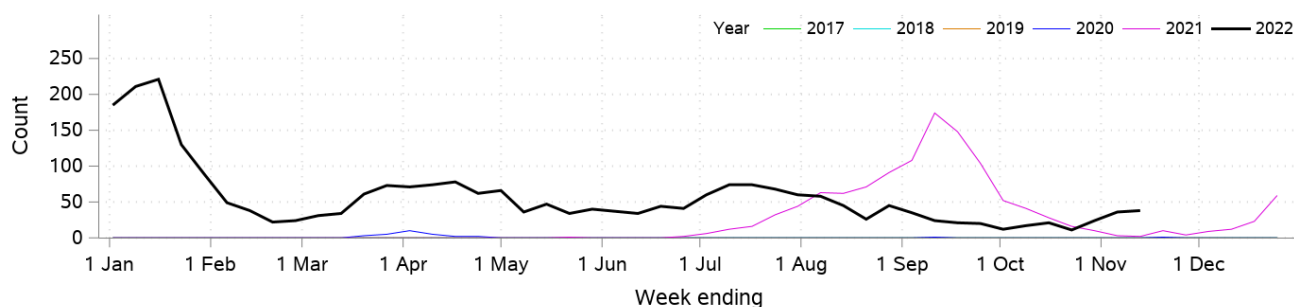
**Figure 6: Presentations to ED due to influenza like illness**



**Figure 7: Presentations to ED due SARS coronavirus**



**Figure 8: SARS coronavirus hospital admissions**



**Figure 9: Pneumonia and ILI admissions**

