

Key messages for local services

New cases: In the past 7 days **3,741** new COVID-19 cases were notified in SESLHD residents, which is a **20% increase** compared to the previous report. COVID-19 notifications continue mainly in adults, with a higher proportion amongst women. The number of influenza cases remains low with only 22 cases.

Deaths: There was 1 COVID-19 related death reported among SESLHD residents, this person was vaccinated. The total number of COVID-19 related deaths in SESLHD is 671.

Aged & Disabled Care Facilities: Twenty-three aged care facilities are under surveillance following recent COVID-19 exposure, with 18 experiencing an outbreak. There is currently one aged care facility under surveillance for an RSV exposure. There is one disability service with a recent exposure to COVID-19.

Boarding Houses & Temporary Accommodation: There are no temporary accommodation facilities with recent exposures.

Testing: COVID-19 PCR testing rates increased across most LGAs in SESLHD this week, except for Woollahra which saw a decrease and Randwick where it remains steady. Testing rates remained steady across all age groups this week. Positivity rate increased from 18.8% last week to a peak of 21.5% on 16 November; all LGAs had increases in positivity. PCR tests represented 64% of all notifications.

As of 12 November, there are several emerging subvariants of the virus circulating. An increasing proportion of cases are BA.2.75 (including BR.2) and BQ.1 sub-lineages.

Data summary

1. Case numbers

Table 1: SESLHD COVID PCR and RAT positive cases by LGA of residence and notification week

LGA	7 days	14 days	28 days	Total	7 day crude rate per 100,000*	Total crude rate per 100,000*
Bayside	641	1,185	1,699	71,284	322	35,831
Georges River	626	1,201	1,718	65,699	388	40,676
Randwick	707	1,250	1,720	68,850	459	44,716
Sutherland Shire	1,042	1,940	2,737	106,502	436	44,520
Sydney	283	556	744	33,151	358	41,983
Waverley	249	461	642	31,959	340	43,598
Woollahra	193	344	497	22,784	337	39,720
SESLHD	3,741	6,937	9,757	400,229	386	41,245

Table 2: SESLHD influenza positive cases by LGA of residence and notification week

LGA	7 days	14 days	28 days	Total for 2022	7 day crude rate per 100,000*	2022 total crude rate per 100,000
Bayside	1	1	8	2,091	0.5	1,051
Georges River	3	5	10	1,376	1.9	852
Randwick	4	8	12	1,721	2.6	1,118
Sutherland Shire	6	11	22	4,208	2.5	1,759
Sydney	2	2	5	645	2.5	817
Waverley	2	6	12	1,047	2.7	1,428
Woollahra	4	7	7	918	7.0	1,600
SESLHD	22	40	76	12,006	2.3	1,237

*based on DPIE LGA projections data 2021.

Figure 1: SESLHD COVID -19 cases by test type, week of notification and year

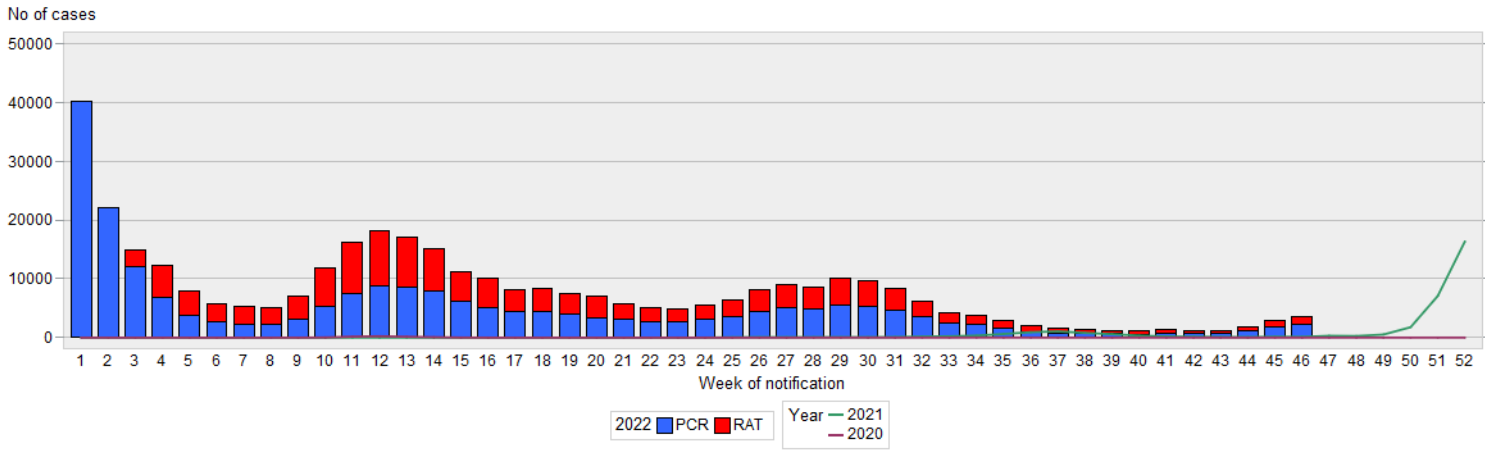
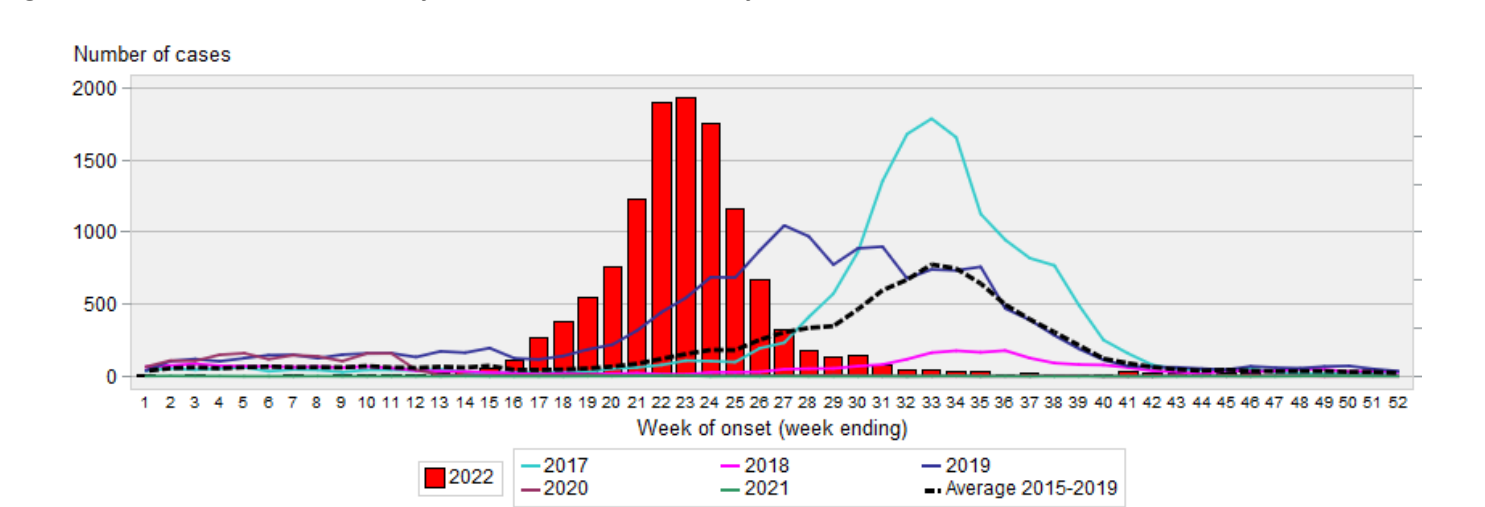
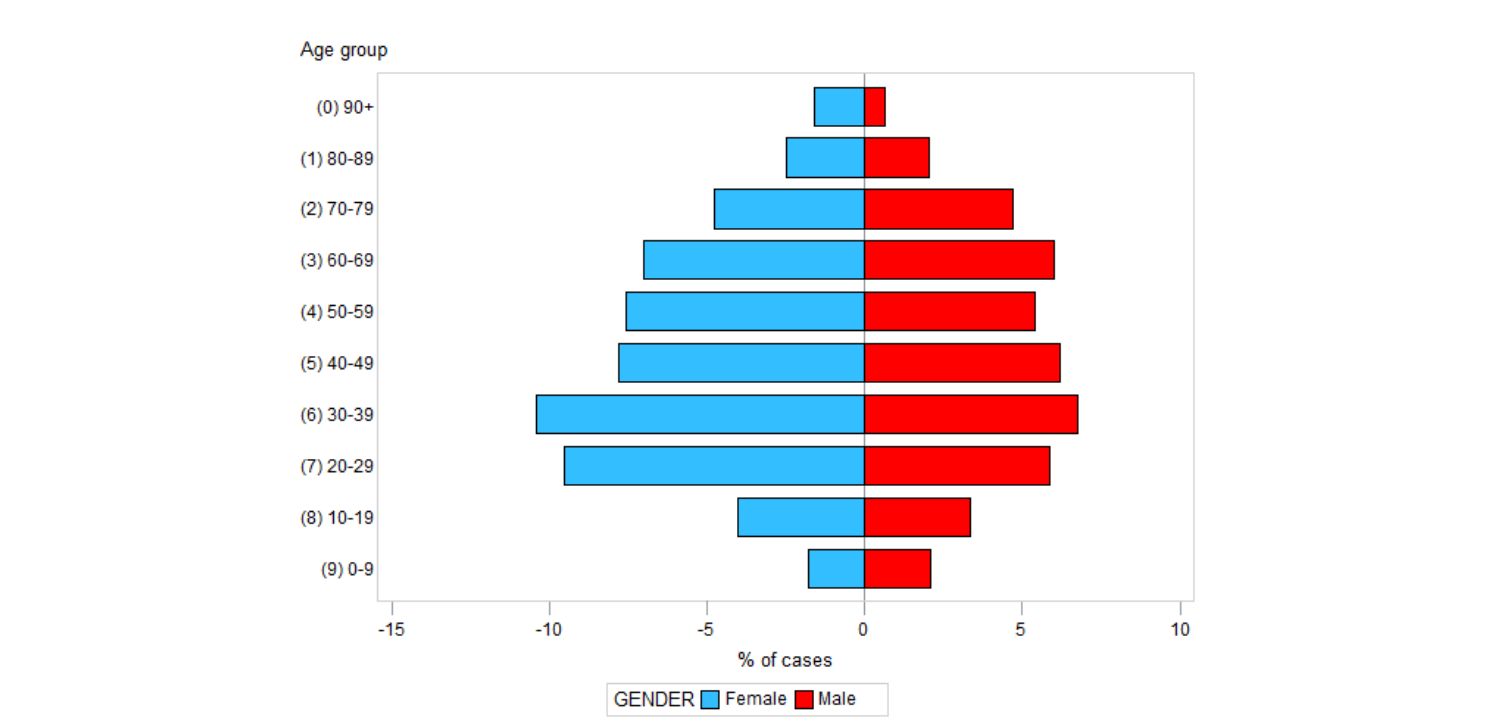


Figure 2: SESLHD influenza cases by week of notification and year



2. Demographic Data

Figure 3: Percentage of COVID cases in the last 7 days by age group and gender



3. Testing Data

Figure 4: COVID-19 PCR weekly testing rate per 100,000 population and LGA of residence since July 2022

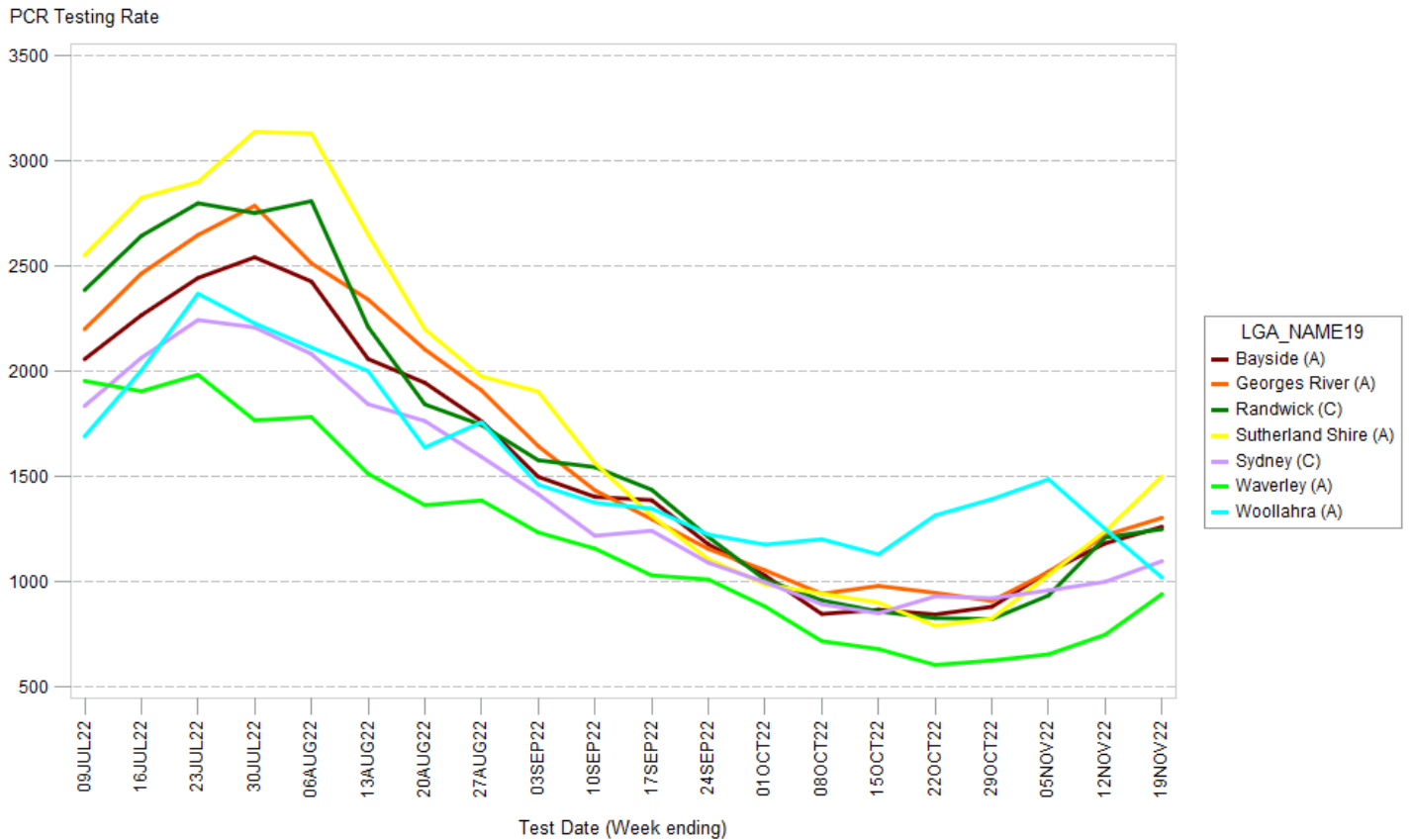


Figure 5: COVID-19 weekly testing rates per 100,000 population by age group since July 2022

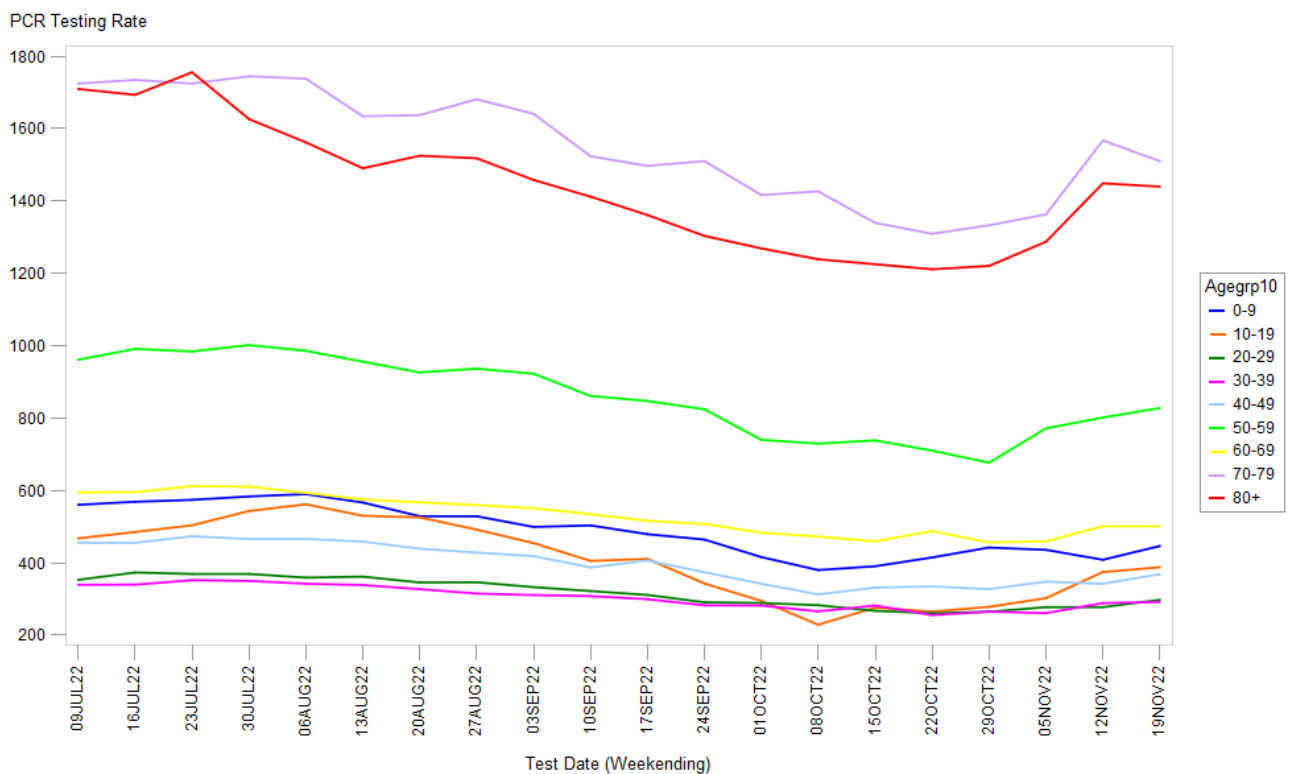
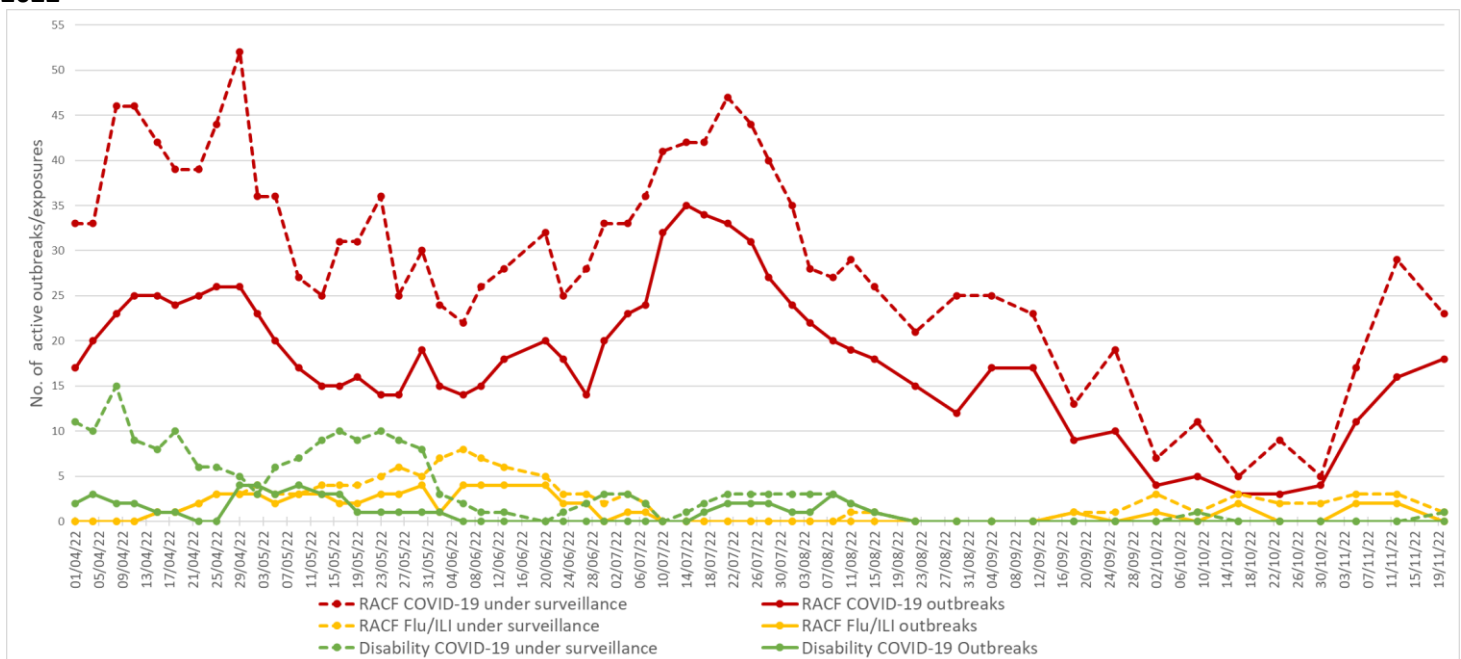


Table 3: COVID-19 weekly PCR positivity rate by LGA of residence

LGA	Week ending November 12 positivity rate (%)	Week ending November 19 positivity rate (%)
Bayside	17.3	18.9
Georges River	21.0	21.3
Randwick	16.5	20.5
Sutherland Shire	18.4	16.9
Sydney	16.7	18.0
Waverley	16.0	16.9
Woollahra	10.1	13.3

4. Residential facility outbreaks reported to the Public Health Unit

Figure 5: SESLHD aged care facility and disability exposures and outbreaks managed by the PHU, April to 20 November 2022



NB. 'Flu/ILI' outbreaks include outbreaks caused by RSV.

5. Emergency department presentations

Table 4: Emergency presentations within SESLHD

Diagnosis / Category	Trend since last week	Compared to average for time of year (2017-2021)	Comment
Respiratory, fever and unspecified infection presentations	Steady	Above	1.5x higher than usual
Influenza like illness (ILI) presentations	Steady	Similar	
Coronaviruses/SARS	Increased	N/A	1.5x higher than last week
Bronchiolitis presentations	Decreased	Below	0.7x lower than last week 0.7x lower than usual

Data is from NSW Public Health Rapid Emergency Department Surveillance System. Increase or decrease indicates change >20% compared to previous week

Figure 6: Presentations to ED due to influenza like illness

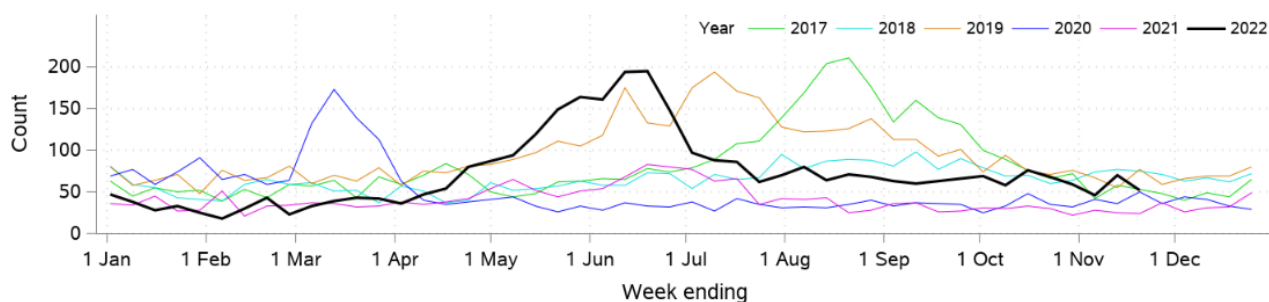


Figure 7: Presentations to ED due SARS coronavirus

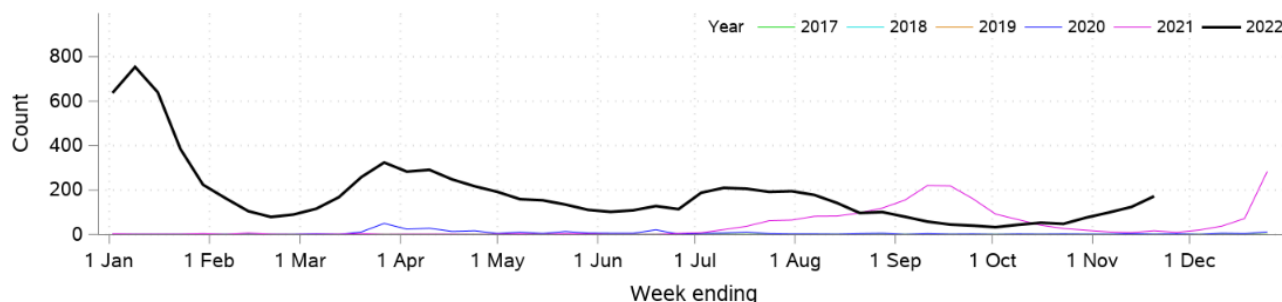


Figure 8: SARS coronavirus hospital admissions

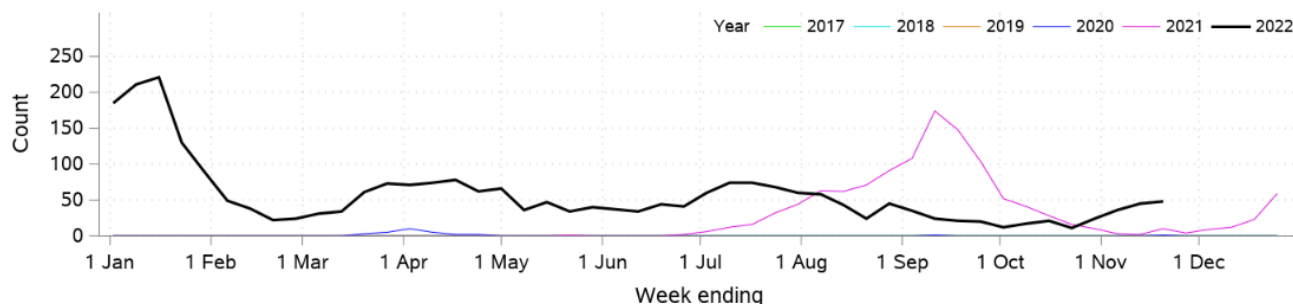


Figure 9: Pneumonia and ILI admissions

