

Key messages for local services

New cases: In the past 7 days **4,638** new COVID-19 cases were notified in SESLHD residents, which is a **24% increase** compared to the previous report. COVID-19 notifications continue mainly in adults, with a higher proportion amongst women. The number of influenza cases remains low with only 27 cases.

Deaths: There was no COVID-19 related deaths in the past 7 days among SESLHD residents. The total number of COVID-19 related deaths in SESLHD is 673.

Aged & Disabled Care Facilities: Thirty aged care facilities are under surveillance following recent COVID-19 exposure, with 20 experiencing an outbreak. There are currently three aged-care facilities under surveillance for recent influenza like illness exposure, with two experiencing an RSV outbreak. There are two disability services with a recent exposure to COVID-19.

Boarding Houses & Temporary Accommodation: There are no temporary accommodation facilities with recent exposures.

Testing: COVID-19 PCR testing rates remain steady across most LGAs in SESLHD this week, except for Bayside which saw a decrease and Woollahra which saw an increase. Testing rates remained steady across most age groups this week, with a slight decrease in testing seen in those aged 80 years or older. Positivity rate increased from 21.5% last week to a peak of 24.8% on 24 November; all LGAs had increases in positivity, particularly Georges River where positivity was 29%. PCR tests represented 66% of all notifications.

As of 19 November, this wave of COVID-19 infections is now characterised by a diverse mix of sublineages including BR.2 and BQ.1.1.

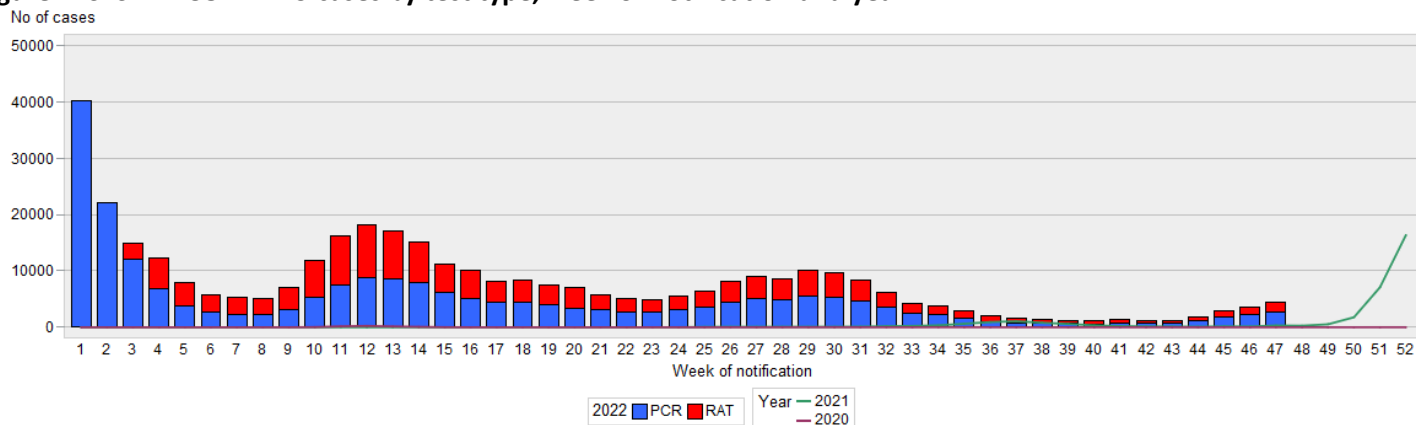
Data summary

1. Case numbers

Table 1: SESLHD COVID PCR and RAT positive cases by LGA of residence and notification week

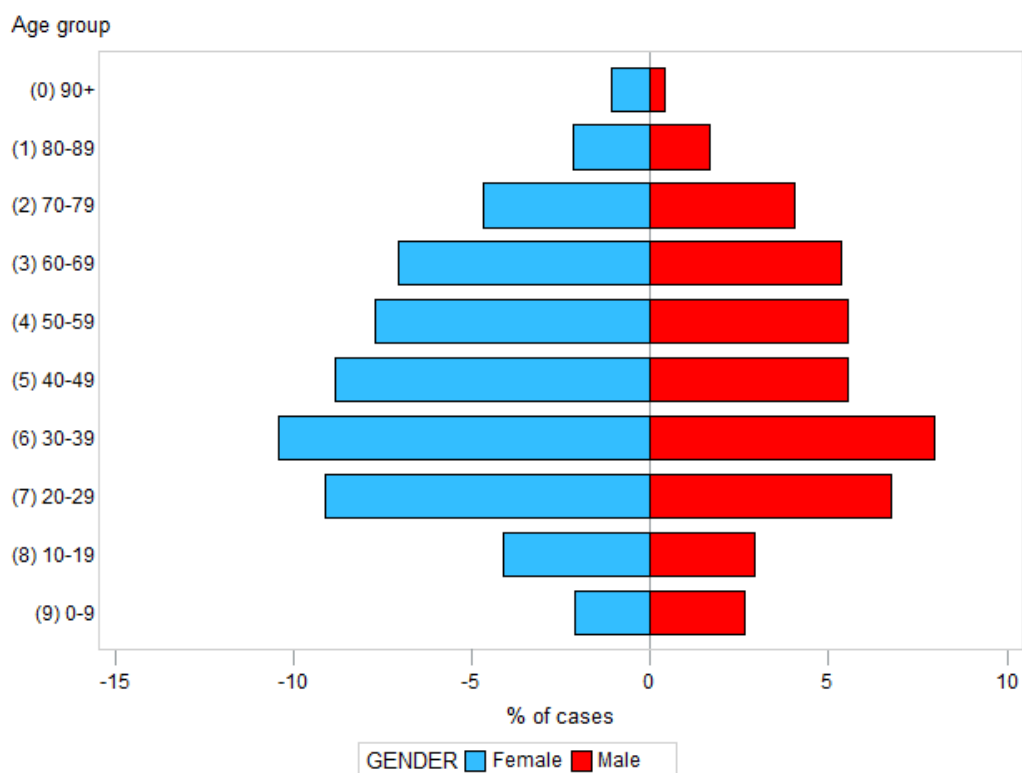
LGA	7 days	14 days	28 days	Total	7 day crude rate per 100,000*	Total crude rate per 100,000*
Bayside	777	1,476	2,197	72,025	391	36,204
Georges River	886	1,566	2,337	66,554	549	41,205
Randwick	802	1,536	2,277	69,608	521	45,208
Sutherland Shire	1,281	2,374	3,620	107,705	536	45,023
Sydney	332	642	965	33,465	421	42,381
Waverley	284	549	832	32,229	387	43,966
Woollahra	276	478	686	23,045	481	40,175
SESLHD	4,638	8,621	12,914	404,631	478	41,699

Figure 1: SESLHD COVID -19 cases by test type, week of notification and year



2. Demographic Data

Figure 2: Percentage of COVID cases in the last 7 days by age group and gender



3. Testing Data

Figure 3: COVID-19 PCR weekly testing rate per 100,000 population and LGA of residence since July 2022

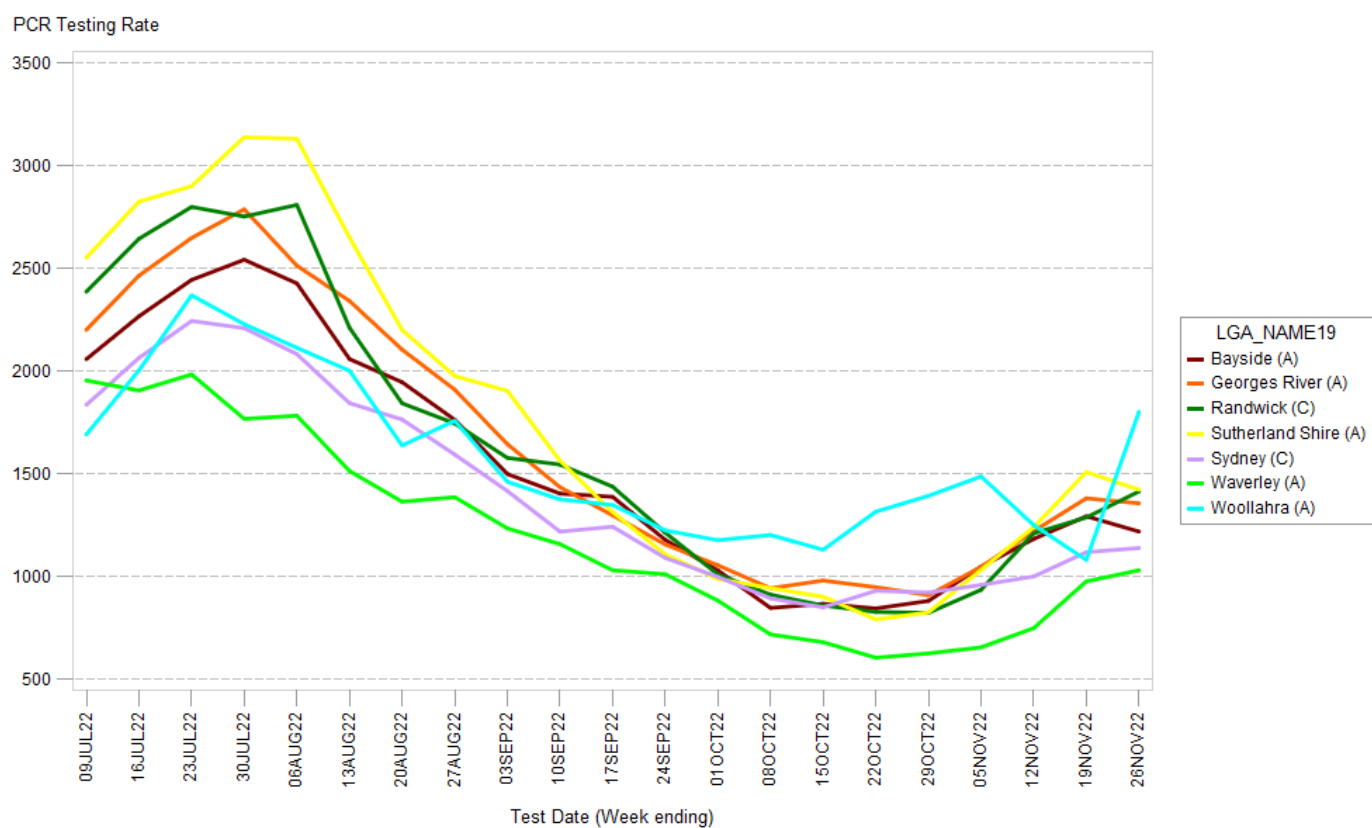


Figure 4: COVID-19 weekly testing rates per 100,000 population by age group since July 2022

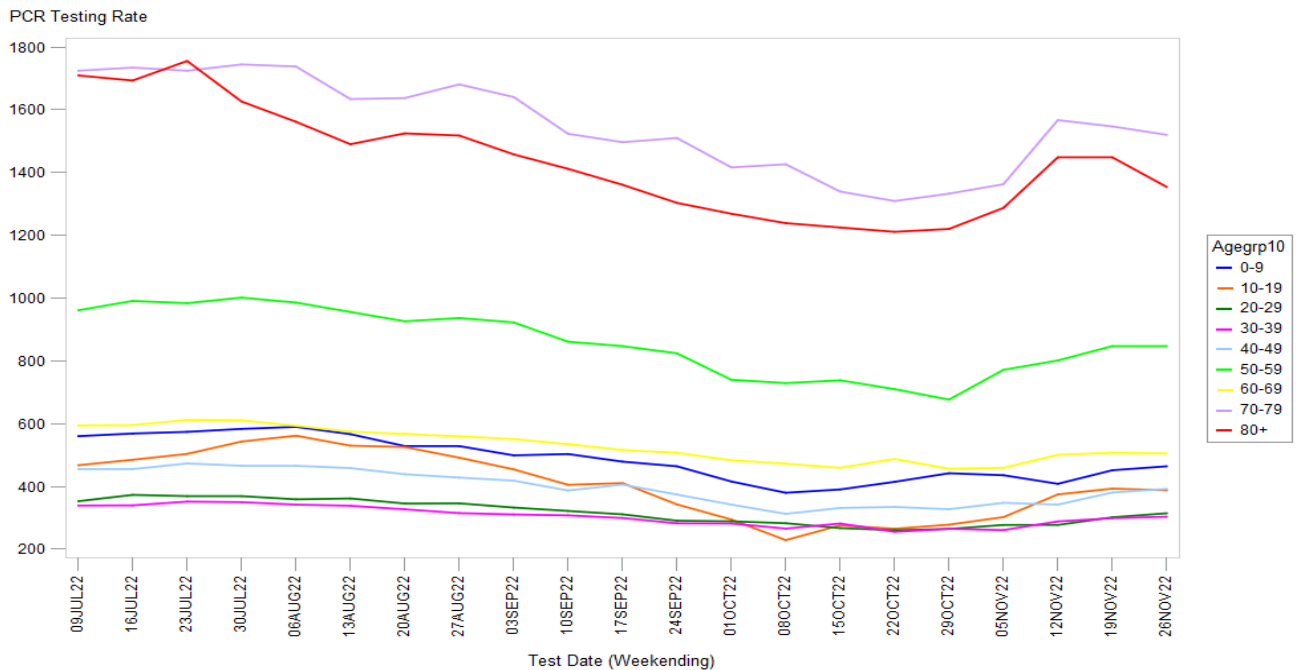
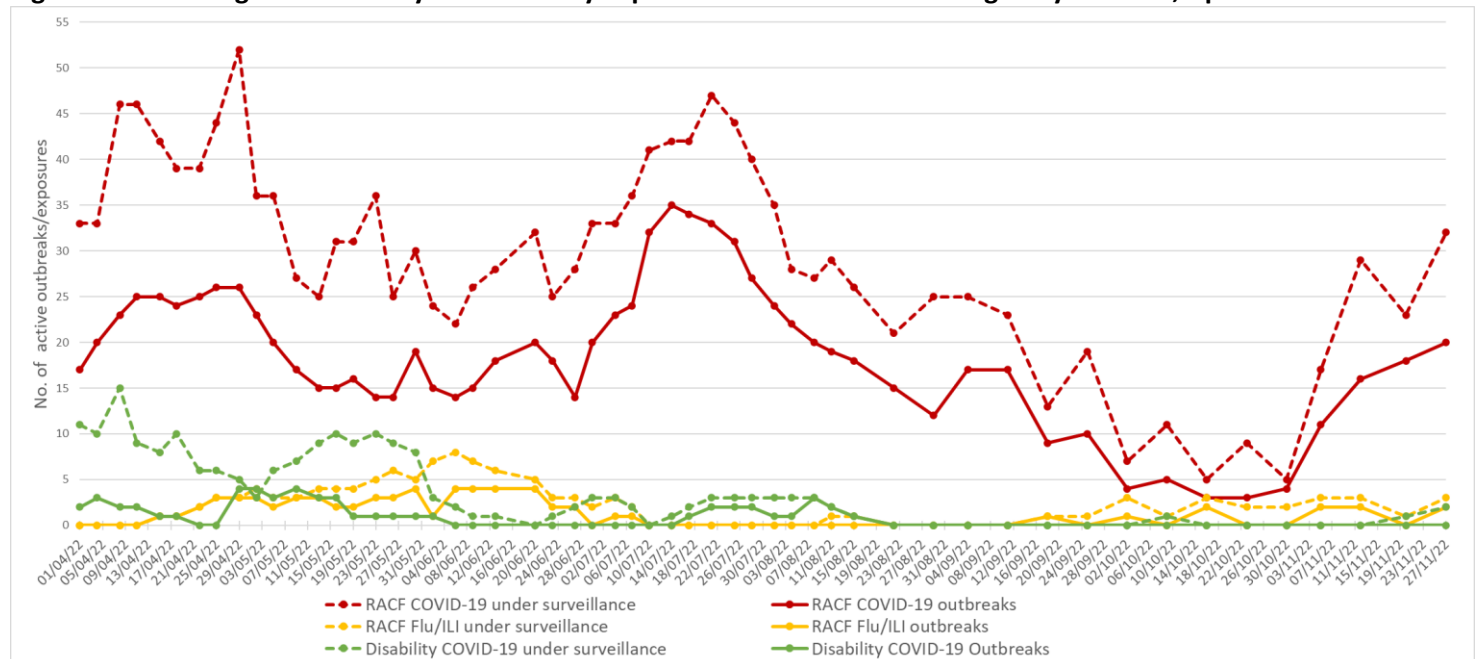


Table 2: COVID-19 weekly PCR positivity rate by LGA of residence

LGA	Week ending November 19 positivity rate (%)	Week ending November 26 positivity rate (%)
Bayside	18.9	23.3
Georges River	21.3	29.0
Randwick	20.5	19.9
Sutherland Shire	16.9	23.0
Sydney	18.0	18.5
Waverley	16.9	20.5
Woollahra	13.3	12.7

4. Residential facility outbreaks reported to the Public Health Unit

Figure 5: SESLHD aged care facility and disability exposures and outbreaks managed by the PHU, April to 27 Nov 2022



NB. 'Flu/ILI' outbreaks include outbreaks caused by RSV.

5. Emergency department presentations

Table 3: Emergency presentations within SESLHD

Diagnosis / Category	Trend since last week	Compared to average for time of year (2017-2021)	Comment
Respiratory, fever and unspecified infection presentations	Steady	Above	1.3x higher than usual
Influenza like illness (ILI) presentations	Steady	Similar	
Coronaviruses/SARS	Steady	N/A	
Bronchiolitis presentations	Steady	Similar	

Data is from NSW Public Health Rapid Emergency Department Surveillance System. Increase or decrease indicates change >20% compared to previous week

Figure 6: Presentations to ED due to influenza like illness

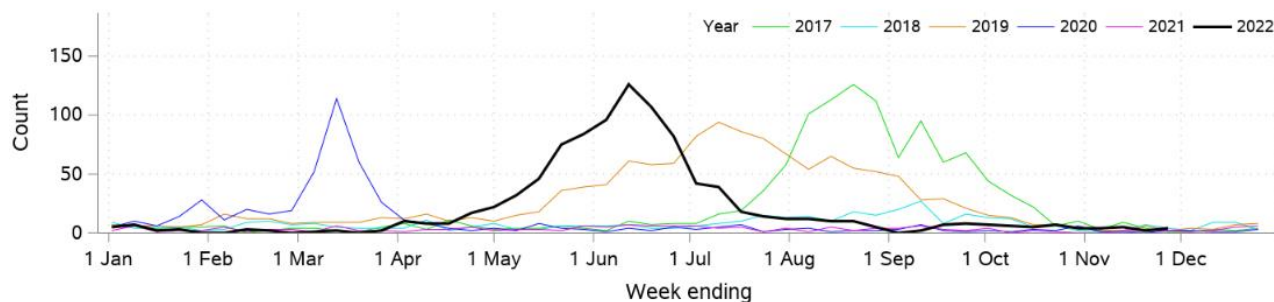


Figure 7: Presentations to ED due SARS coronavirus

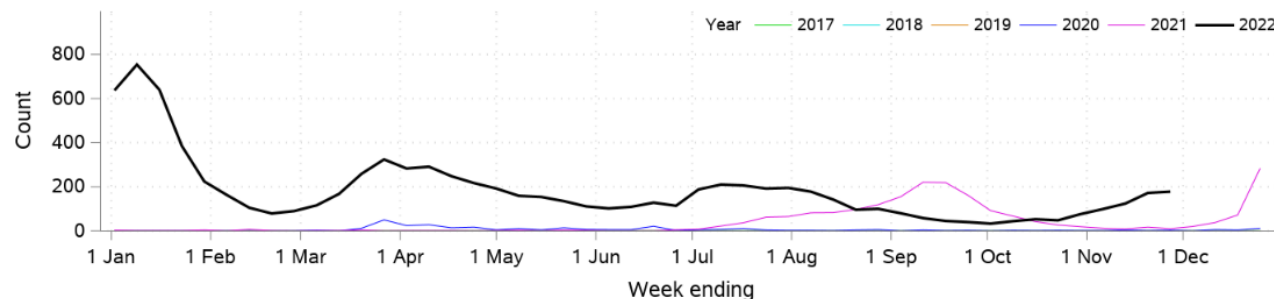


Figure 8: SARS coronavirus hospital admissions

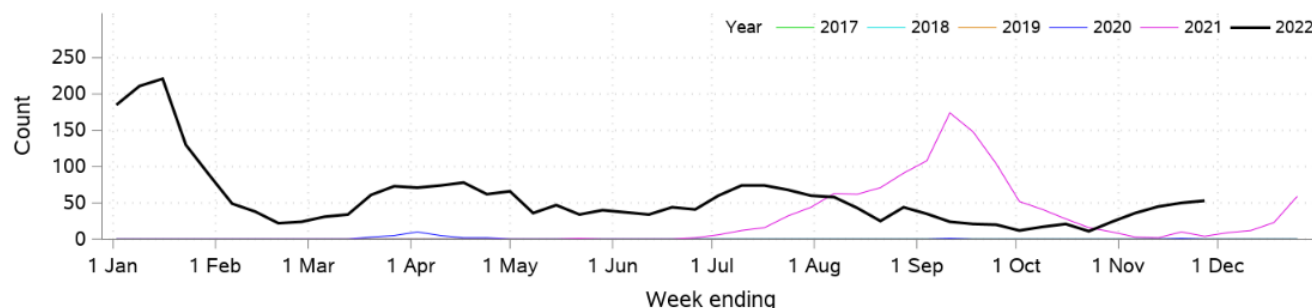


Figure 9: Pneumonia and ILI admissions

