



**Key messages for local services**

**New cases:** In the past 7 days **2010** new COVID-19 cases were notified in SESLHD residents, which is a **51.5% increase** compared to the previous report. COVID-19 notifications continue mainly in adults. The number of influenza cases remains low with only 13 cases.

**Deaths:** There was one COVID-19 related death reported among SESLHD residents, who was vaccinated. The total number of COVID-19 related deaths in SESLHD is 664.

**Aged & Disabled Care Facilities:** Seventeen aged care facilities are under surveillance following recent COVID-19 exposure, with 11 experiencing an outbreak. There are currently 3 aged care facilities under surveillance for other respiratory viruses: 2 with an RSV outbreak and 1 with a human metapneumovirus exposure. There are no disability services with recent exposure to COVID-19.

**Boarding Houses & Temporary Accommodation:** There are no temporary accommodation facilities with recent exposures.

**Testing:** COVID-19 PCR testing rates increased across most LGAs in SESLHD this week, except for Waverley and Sydney where they remain steady. Testing rates increased mostly in 50-59, 70-79 and 80+ age groups with testing steady or decreasing in other age groups. Positivity rate increased from 10.9% last week to a peak of 15.9% on 4 November; most LGAs had notable increases in positivity except Woollahra and Sydney. PCR tests represented 67% of all notifications.

As of 4 November, BA.4 and BA.5 continue to be the most common variants across NSW, however their dominance is declining with new escape sub-lineages making up at least 40% of circulating virus in the NSW community. This includes XBB, BA.2.75 and BQ.1.

**Data summary**

**1. Case numbers**

**Table 1: SESLHD COVID PCR and RAT positive cases by LGA of residence and notification week**

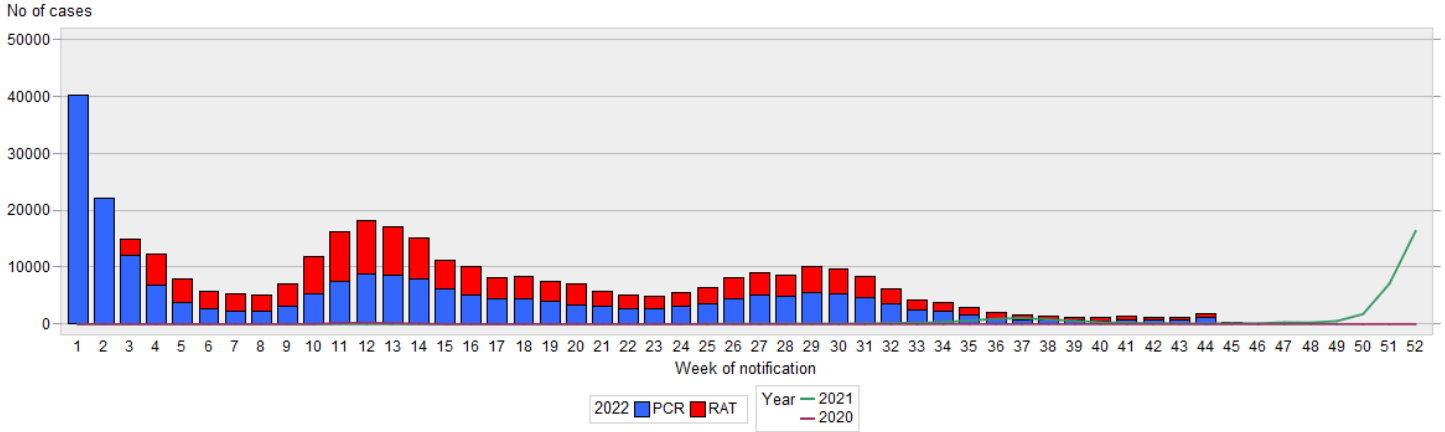
LGA	7 days	14 days	28 days	Total	7 day crude rate per 100,000*	Total crude rate per 100,000*
Bayside	356	636	1048	70,184	179	35,278
Georges River	356	616	1097	64,573	220	39,978
Randwick	336	570	885	67,668	218	43,948
Sutherland Shire	615	1010	1592	104,701	257	43,767
Sydney	121	231	439	32,622	153	41,313
Waverley	127	213	368	31,524	173	43,005
Woollahra	99	180	284	22,458	173	39,151
<b>SESLHD</b>	<b>2010</b>	<b>3456</b>	<b>5713</b>	<b>393,730</b>	<b>207</b>	<b>40,575</b>

**Table 2: SESLHD influenza positive cases by LGA of residence and notification week**

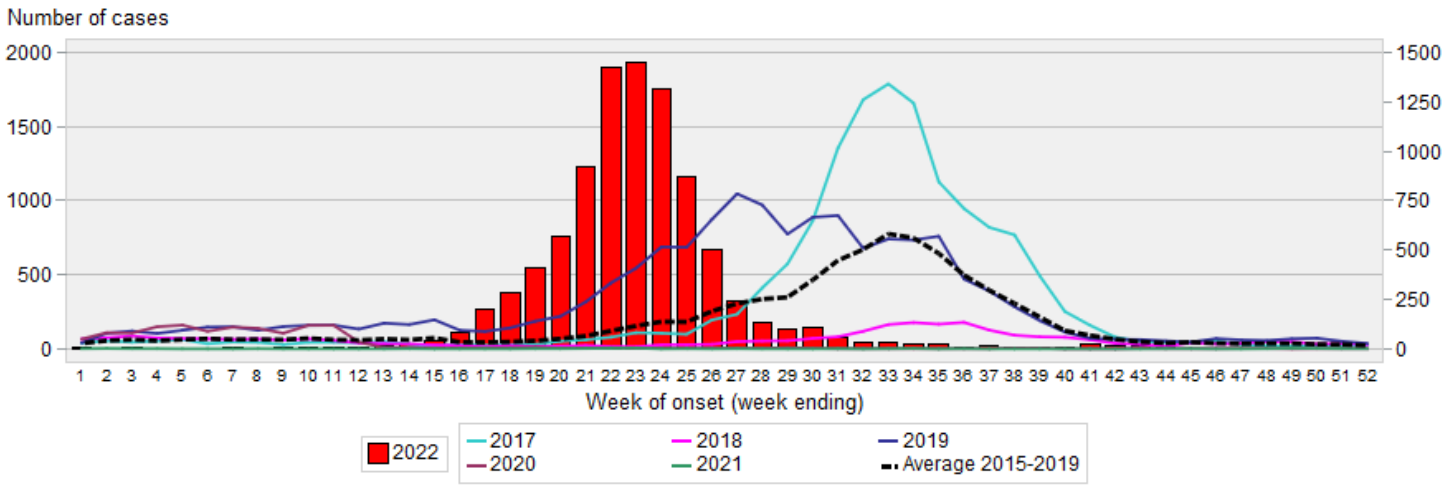
LGA	7 days	14 days	28 days	Total for 2022	7 day crude rate per 100,000*	2022 total crude rate per 100,000
Bayside	2	7	12	2,090	1	1,051
Georges River	1	4	9	1,370	1	848
Randwick	4	4	9	1,713	3	1,113
Sutherland Shire	4	10	25	4,196	2	1,754
Sydney	0	1	6	639	.	809
Waverley	2	4	13	1,038	3	1,416
Woollahra	0	0	5	911	.	1,588
<b>SESLHD</b>	<b>13</b>	<b>30</b>	<b>79</b>	<b>11,957</b>	<b>1.3</b>	<b>1,232</b>

\*based on DPIE LGA projections data 2021.

**Figure 1: SESLHD COVID -19 cases by test type , week of notification and year**

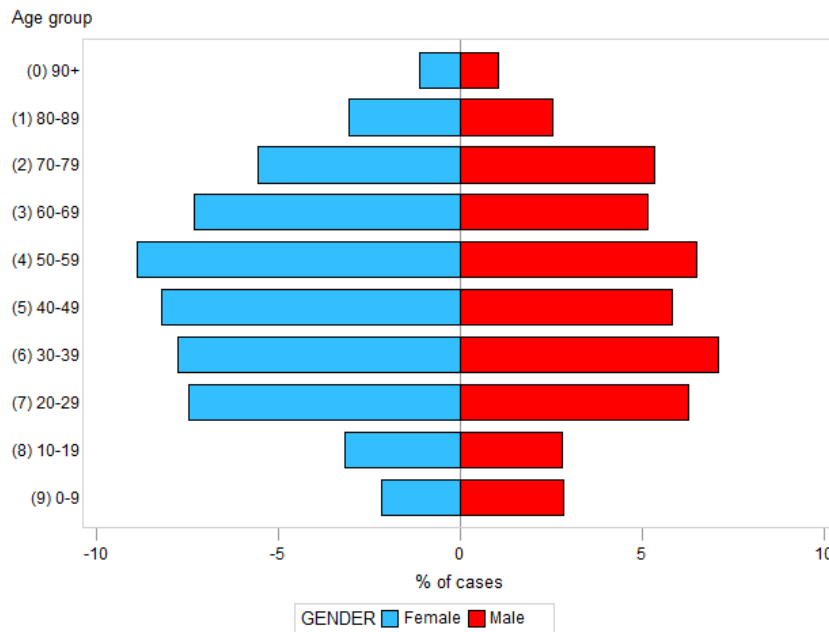


**Figure 2: SESLHD influenza cases by week of notification and year**



## 2. Demographic Data

**Figure 3: Percentage of COVID cases in the last 7 days by age group and gender**



### 3. Testing Data

Figure 4: COVID-19 PCR weekly testing rate per 100,000 population and LGA of residence since July 2022

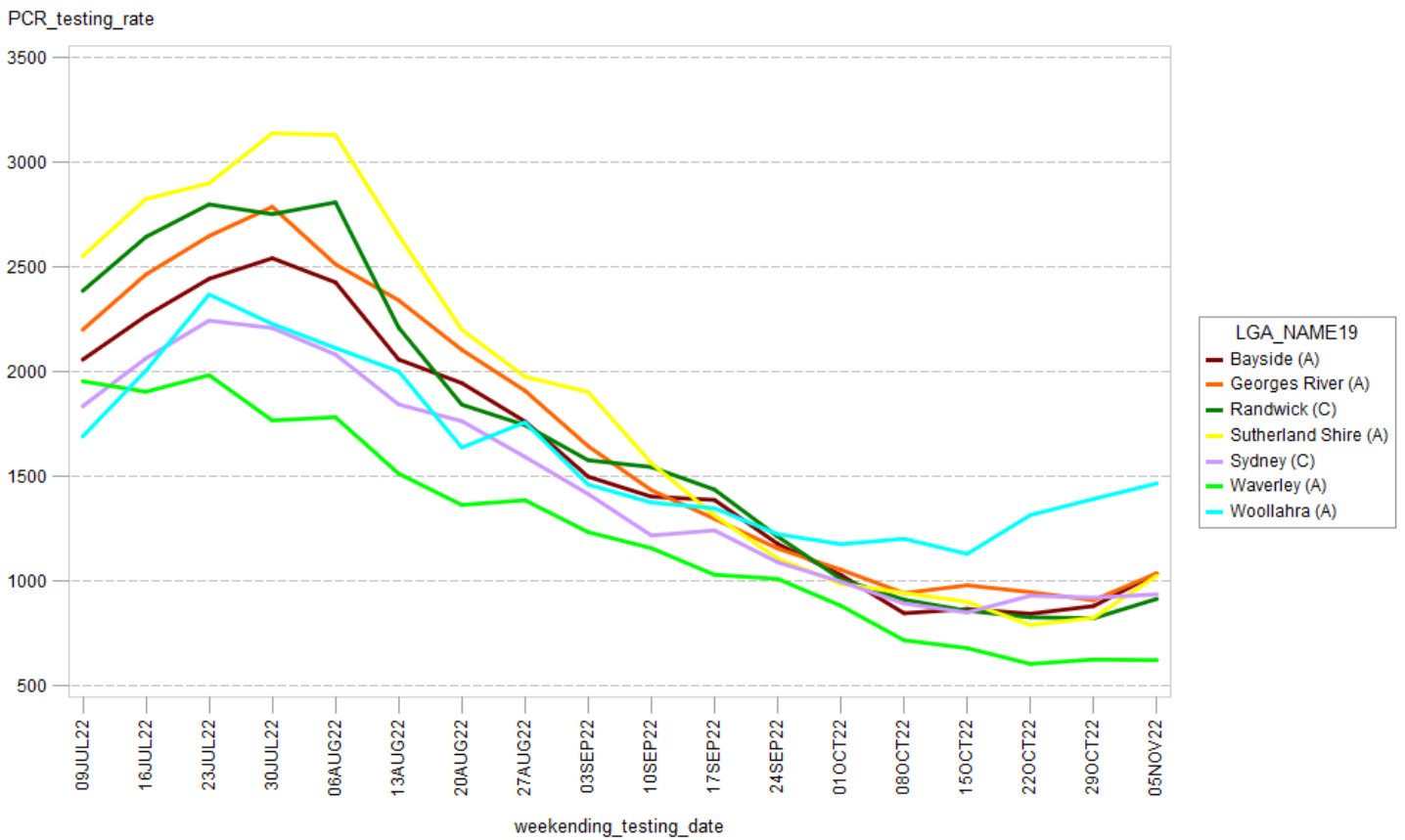
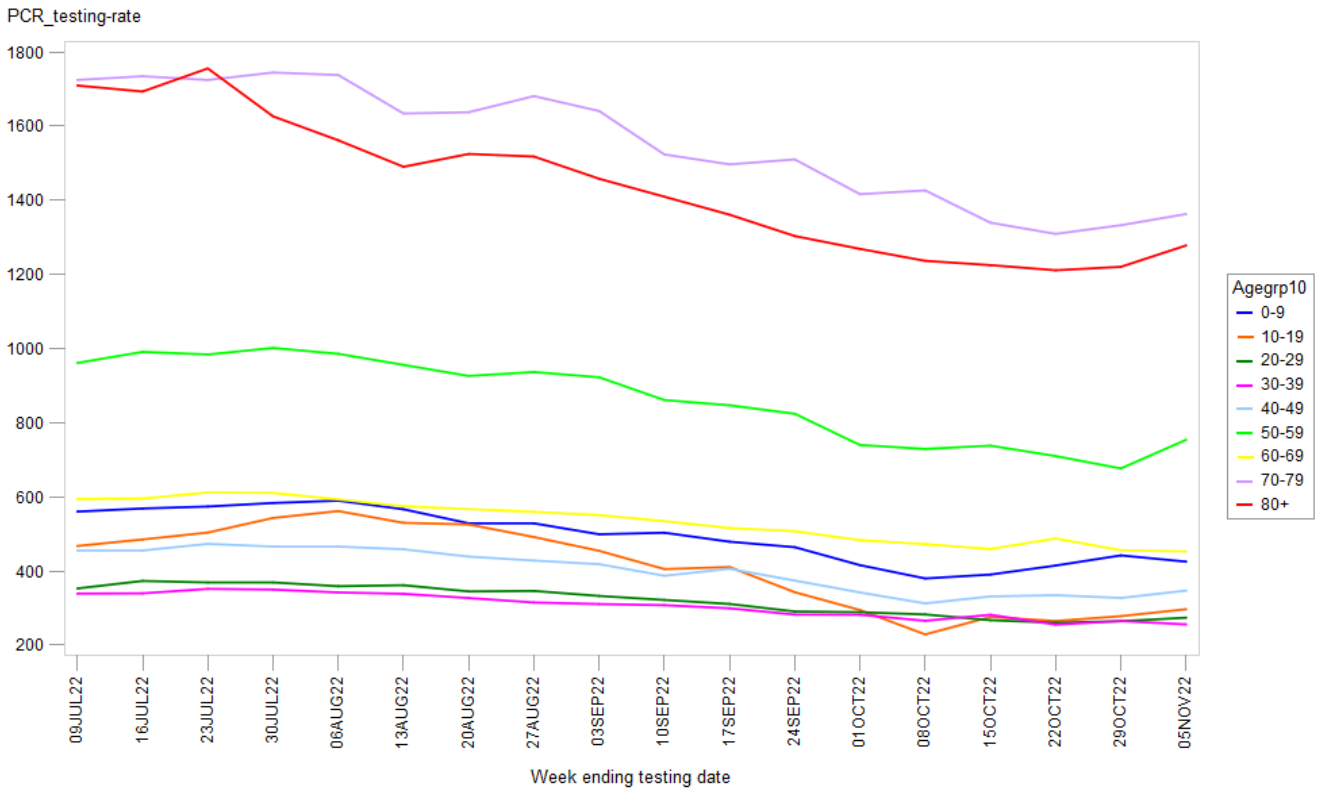


Figure 5: COVID-19 weekly testing rater per 100,000 population by age group since July 2022

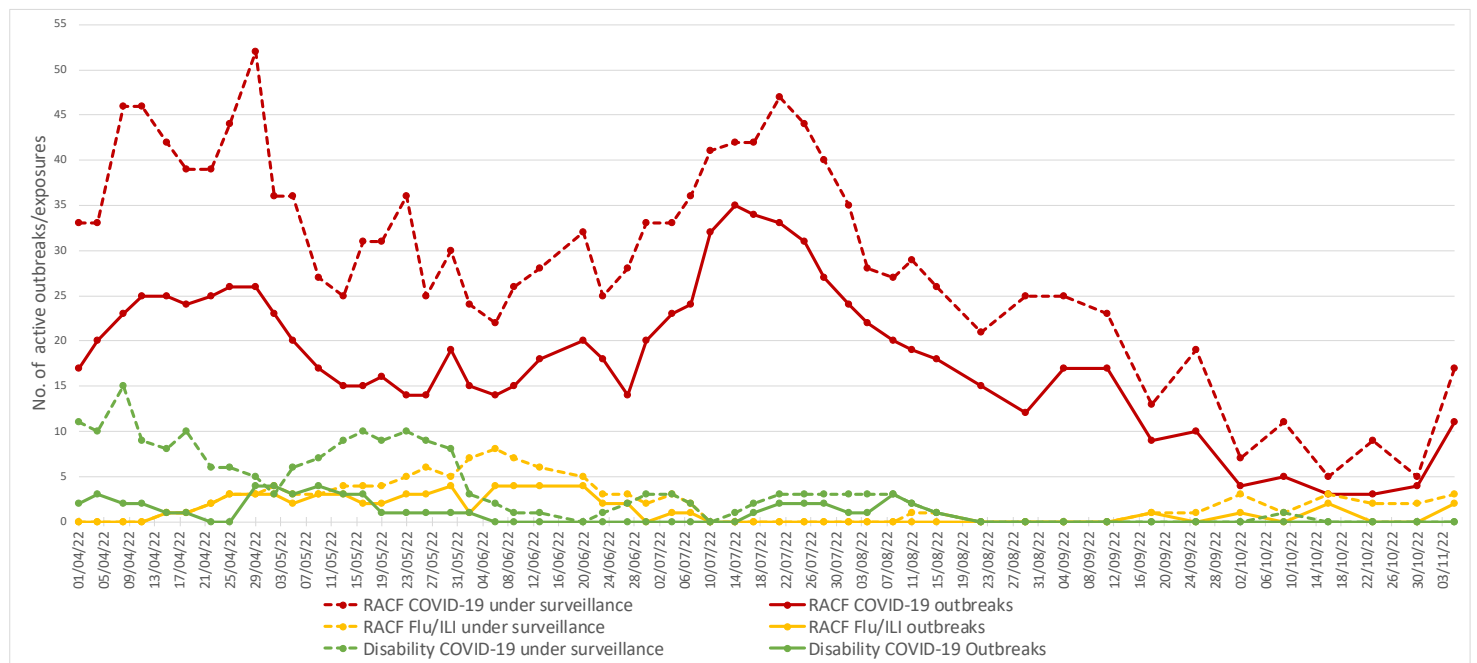


**Table 3: COVID-19 weekly PCR positivity rate by LGA of residence**

LGA	Week ending October 29 positivity rate (%)	Week ending November 5 positivity rate (%)
Bayside	11.8	13.1
Georges River	12.4	15.9
Randwick	9.9	13.2
Sutherland Shire	9.8	14.8
Sydney	8.2	8.6
Waverley	9.3	11.8
Woollahra	4.2	4.2

**4. Residential facility outbreaks reported to the Public Health Unit**

**Figure 5: SESLHD aged care facility and disability exposures and outbreaks managed by the PHU, April to 30 October 2022**



NB. 'Flu/ILI' outbreaks include outbreaks caused by RSV.

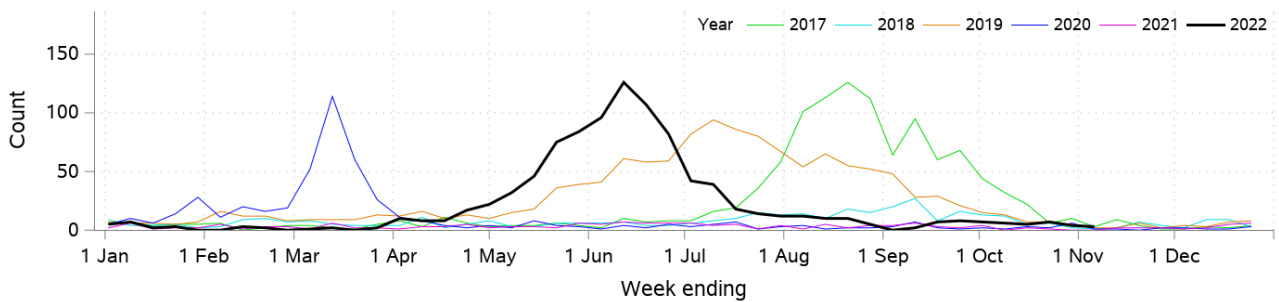
## 5. Emergency department presentations

**Table 4: Emergency presentations within SESLHD**

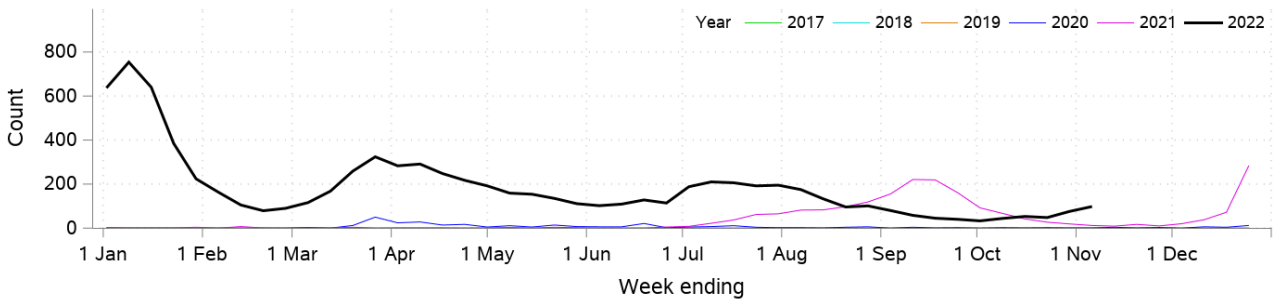
Diagnosis / Category	Trend since last week	Compared to average for time of year (2017-2021)	Comment
Respiratory, fever and unspecified infection presentations	Steady	Above	1.3x higher than usual
Influenza like illness (ILI) presentations	Similar	Above	3x higher than usual*
Coronaviruses/SARS	Higher	N/A	1.3x higher than last week
Bronchiolitis presentations	Similar	Similar	

Data is from NSW Public Health Rapid Emergency Department Surveillance System. Increase or decrease indicates change >20% compared to previous week  
\*very small numbers

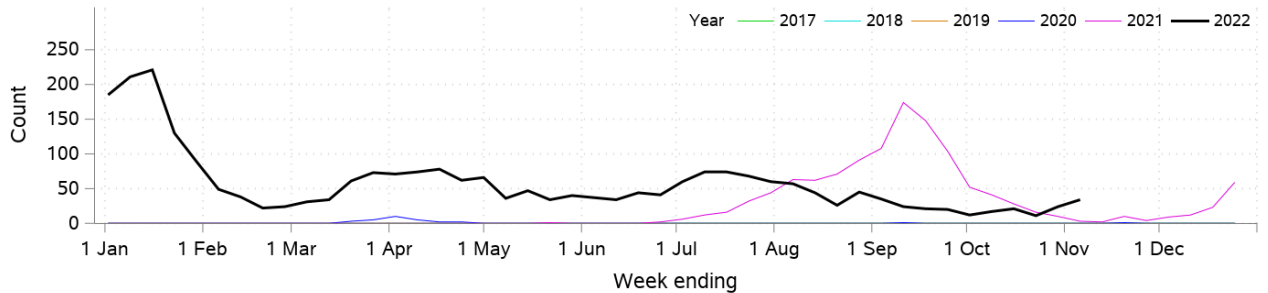
**Figure 6: Presentations to ED due to influenza like illness**



**Figure 7: Presentations to ED due SARS coronavirus**



**Figure 8: SARS coronavirus hospital admissions**



**Figure 9: Pneumonia and ILI admissions**

