

Key messages for local services

New cases: In the past 7 days **1,327** new COVID-19 cases were notified in SESLHD residents, which is a 9.6% **increase** compared to the previous report. COVID-19 notifications continue mainly in adults. The number of influenza cases notified decreased from 22 to **15**.

Deaths: There was one COVID-19 related death reported among SESLHD residents, who was vaccinated. The total number of COVID-19 related deaths in SESLHD is 662.

Aged & Disabled Care Facilities: Five aged care facilities are under surveillance following recent COVID-19 exposure, with 4 experiencing an outbreak. There are currently 2 aged care facilities under surveillance following RSV and human metapneumovirus exposures. There are no disability services with recent exposure to COVID-19.

Boarding Houses & Temporary Accommodation: There are no temporary accommodation facilities with recent exposures.

Testing: COVID-19 PCR testing rates continued to decrease across most LGAs in SESLHD this week, except Woollahra which increased again. Positivity rate is slowly trending upwards with it reaching a peak of 10.9% on 27 October; Randwick and Georges River LGAs had notable increases in positivity. Testing rates increased in children under 10 years of age, with testing steady or decreasing in other age groups. PCR tests represented 66% of all notifications.

As of 22 October, BA.4 and BA.5 continue to be the most common variants across NSW, however their dominance is declining (72%) and we are seeing an emergence of a mix of variants including XBB and BQ1.1. Influenza activity is at low levels but influenza vaccination continues to be recommended.

Data summary

1. Case numbers

Table 1: SESLHD COVID PCR and RAT positive cases by LGA of residence and notification week

LGA	7 days	14 days	28 days	Total	7 day crude rate per 100,000*	Total crude rate per 100,000*
Bayside	258	482	907	69,843	130	35,107
Georges River	241	462	946	64,222	149	39,761
Randwick	212	397	743	67,342	138	43,736
Sutherland Shire	350	697	1,320	104,115	146	43,522
Sydney	99	217	433	32,507	125	41,168
Waverley	88	150	328	31,405	120	42,842
Woollahra	79	129	255	22,366	138	38,991
SESLHD	1,327	2,534	4,932	391,800	137	40,376

Table 2: SESLHD influenza positive cases by LGA of residence and notification week

LGA	7 days	14 days	28 days	Total for 2022	7 day crude rate per 100,000*	2022 total crude rate per 100,00
Bayside	5	8	13	2,088	2.51	1,050
Georges River	3	6	10	1,369	1.86	848
Randwick	.	1	7	1,709	.	1,110
Sutherland Shire	4	13	20	4,190	1.67	1,752
Sydney	1	4	7	639	1.27	809
Waverley	2	2	11	1,036	2.73	1,413
Woollahra	.	3	6	911	.	1,588
SESLHD	15	37	74	11,942	1.5	1,231

*based on DPIE LGA projections data 2021.

Figure 1: SESLHD COVID -19 cases by test type , week of notification and year

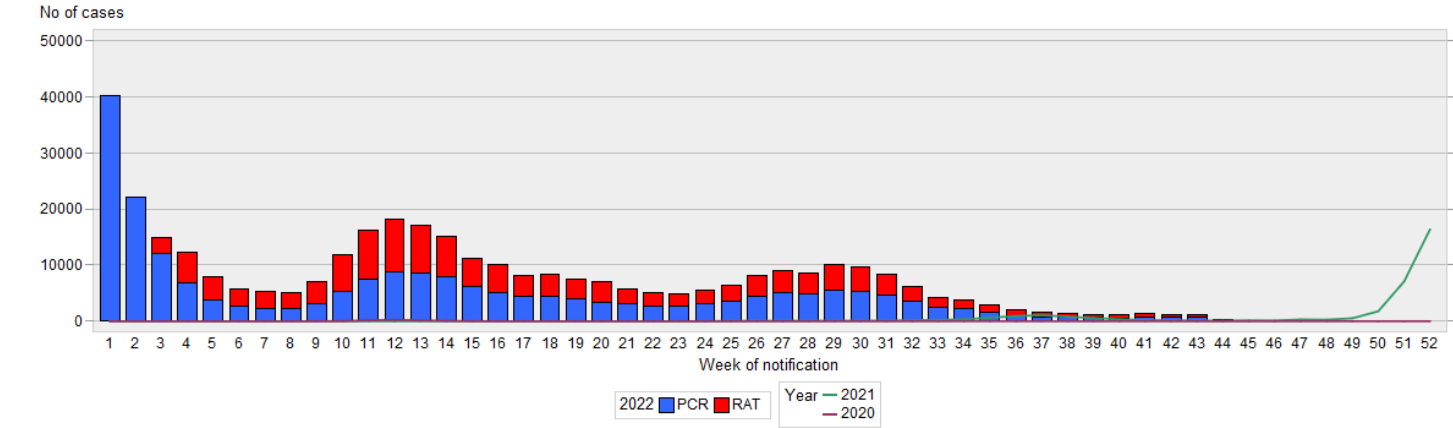
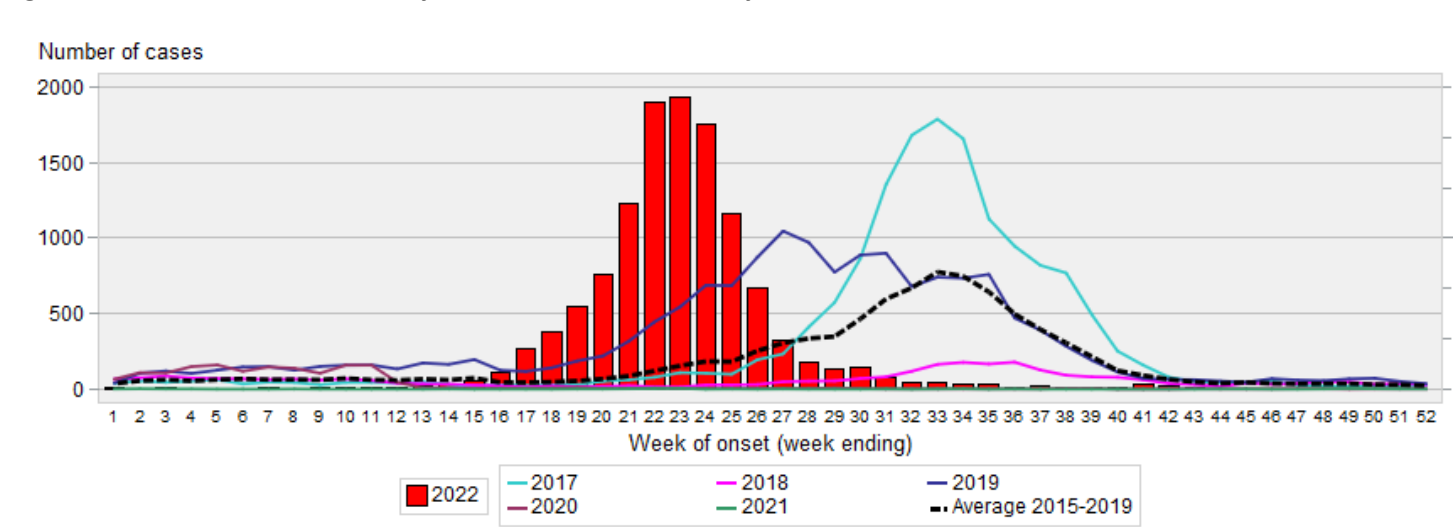
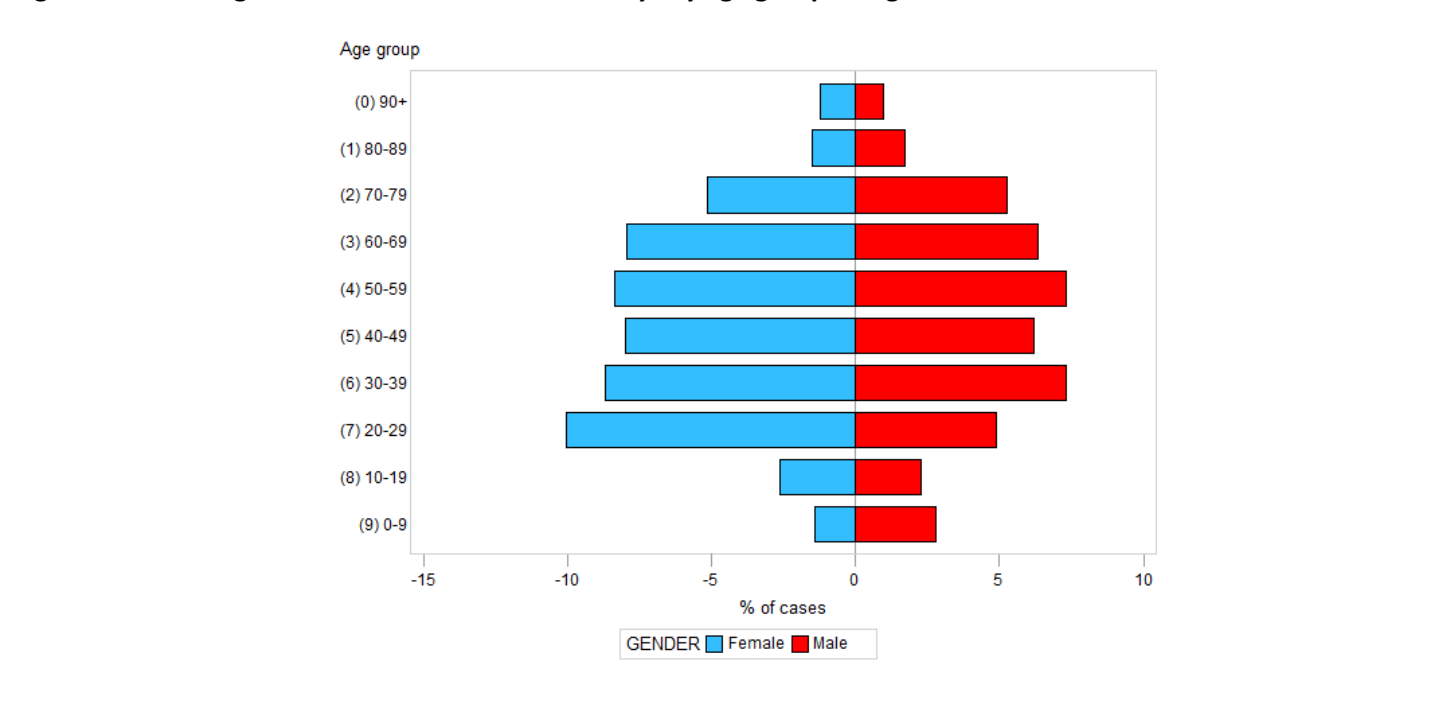


Figure 2: SESLHD influenza cases by week of notification and year



2. Demographic Data

Figure 3: Percentage of COVID cases in the last 7 days by age group and gender



3. Testing Data

Figure 4: COVID-19 PCR weekly testing rate per 100,000 population and LGA of residence since July 2022

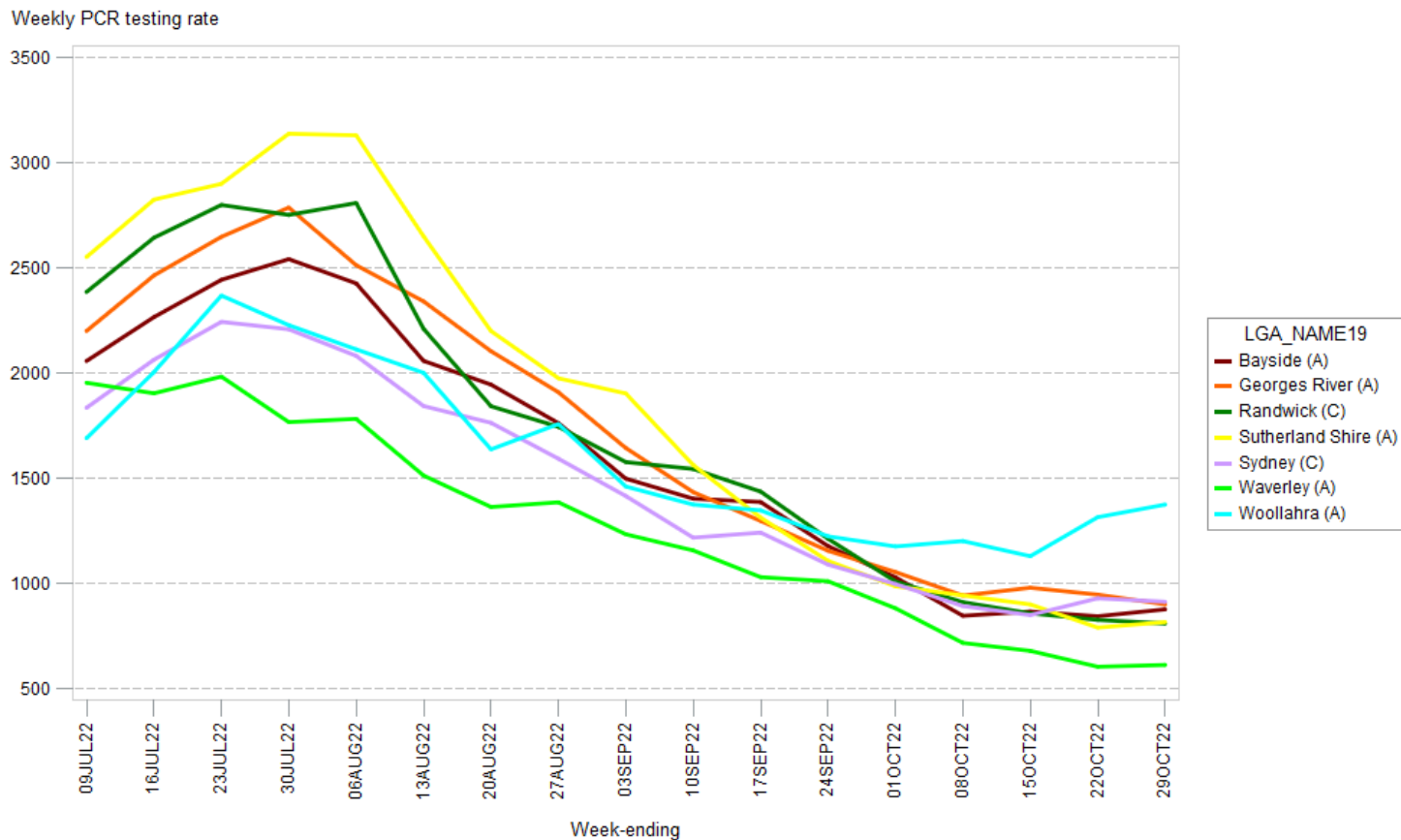


Figure 5: COVID-19 weekly testing rater per 100,000 population by age group since July 2022

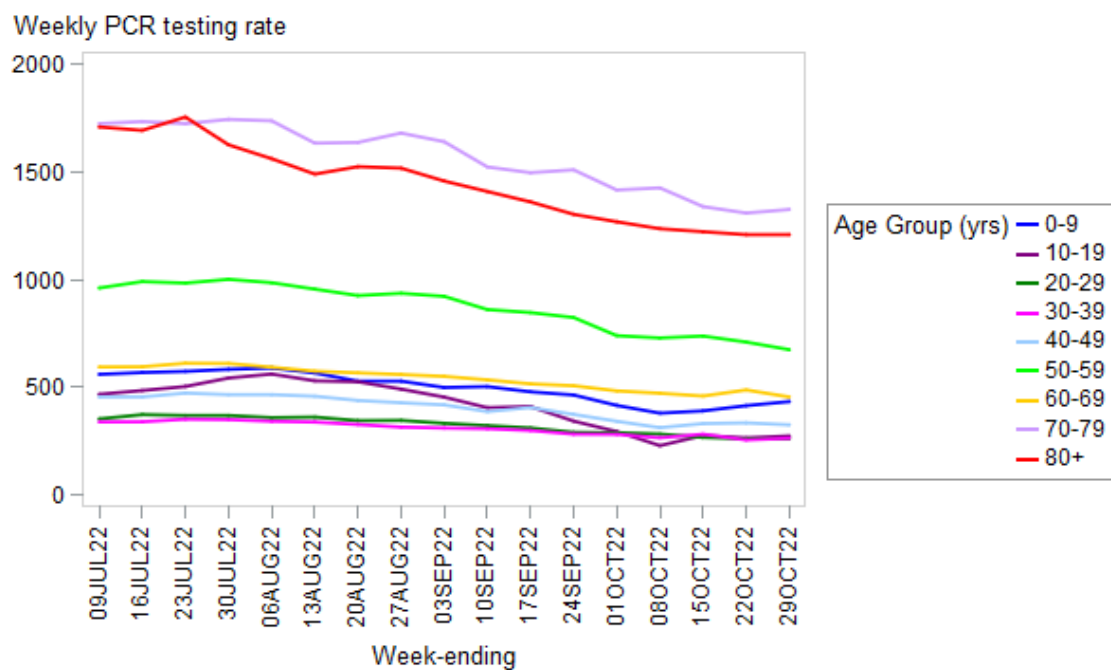
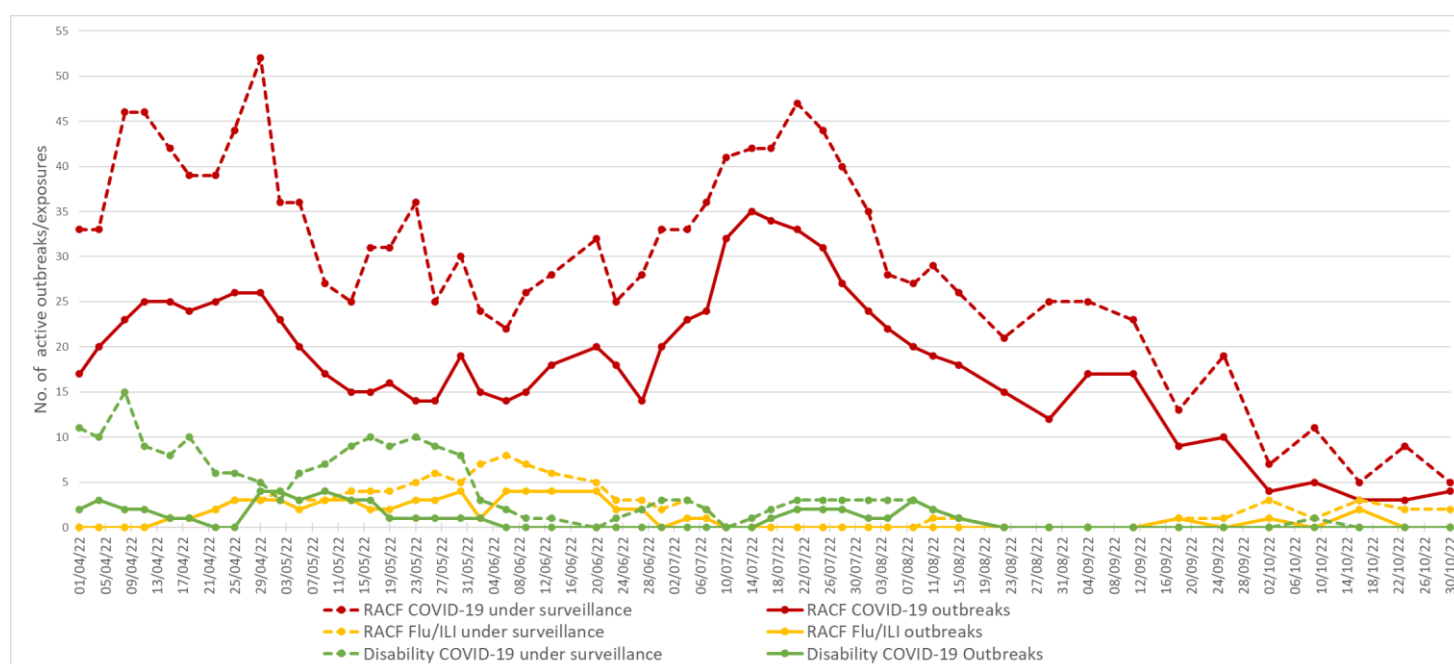


Table 3: COVID-19 weekly PCR positivity rate by LGA of residence

LGA	Week ending October 22 positivity rate (%)	Week ending October 29 positivity rate (%)
Bayside	9.0	9.0
Georges River	9.3	12.4
Randwick	7.6	10.0
Sutherland Shire	10.3	9.9
Sydney	6.8	8.1
Waverley	7.8	9.5
Woollahra	3.9	4.1

4. Residential facility outbreaks reported to the Public Health Unit

Figure 5: SESLHD aged care facility and disability exposures and outbreaks managed by the PHU, April to 30 October 2022



NB. 'Flu/ILI' outbreaks include outbreaks caused by RSV.

5. Emergency department presentations

Table 4: Emergency presentations within SESLHD

Diagnosis / Category	Trend since last week	Compared to average for time of year (2017-2021)	Comment
Respiratory, fever and unspecified infection presentations	Steady	Above	1.4x higher than usual
Influenza like illness (ILI) presentations	Lower	Similar	0.6x lower than last week
Coronaviruses/SARS	Higher	N/A	1.7x higher than last week
Bronchiolitis presentations	Lower	Similar	0.7x lower than last week

Data is from NSW Public Health Rapid Emergency Department Surveillance System. Increase or decrease indicates change >20% compared to previous week

Figure 6: Presentations to ED due to influenza like illness

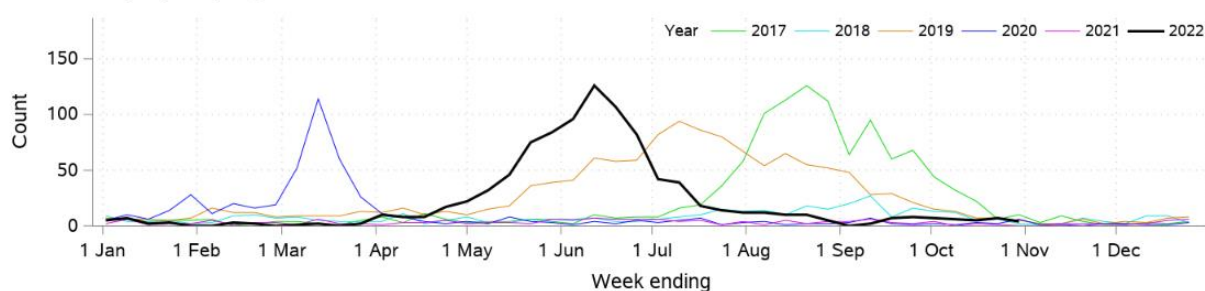


Figure 7: Presentations to ED due SARS coronavirus

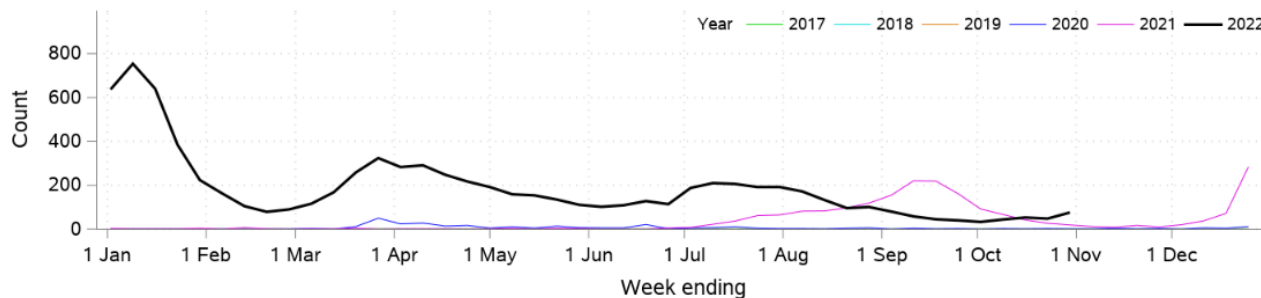


Figure 8: SARS coronavirus hospital admissions

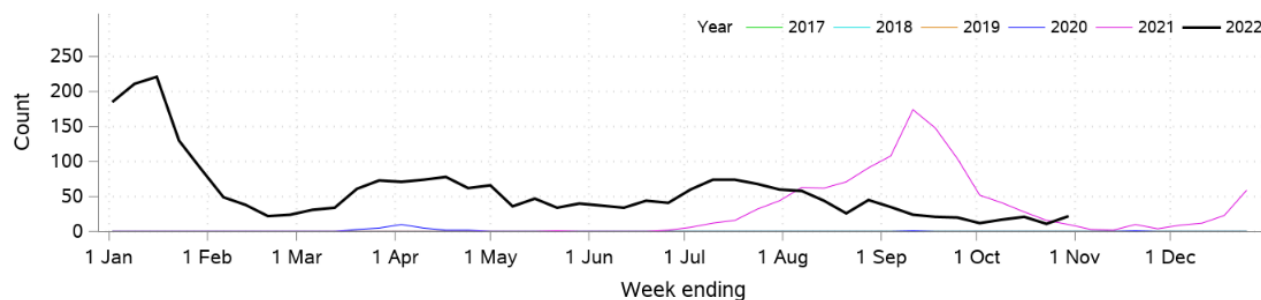


Figure 9: Pneumonia and ILI admissions

