

South Eastern Sydney LHD Influenza Update – April 2022

Summary

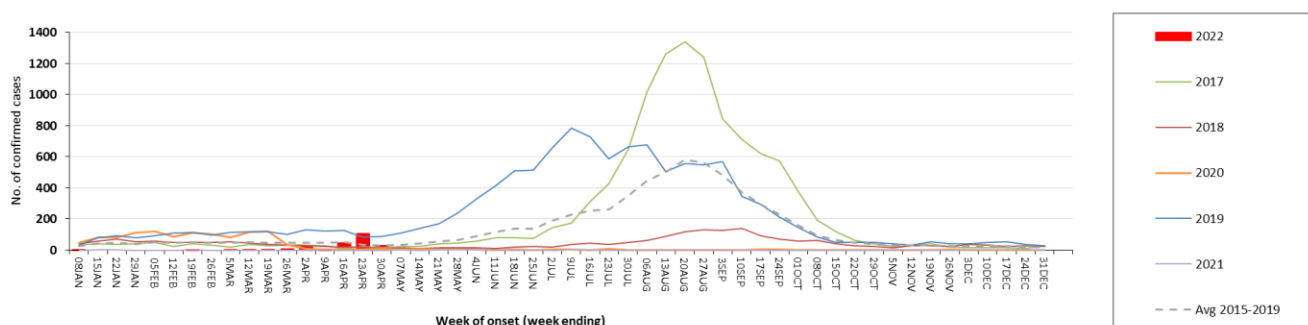
- **Laboratory notifications:** are low but above the 5 year average level (2015-2019) for this time of the year.
- **Outbreaks:** three influenza like illness outbreaks in residential aged care facilities were notified this month.
- **Emergency Departments:** presentations for influenza like illnesses are 4.1 times higher than the previous month.

1. South Eastern Sydney LHD (SESLHD)

1.1 Laboratory notifications of influenza

- The weekly number of notifications is low but 1.6 times higher than the 5 year (2015-2019) average level for this time of year and 4.1 times higher than in March.

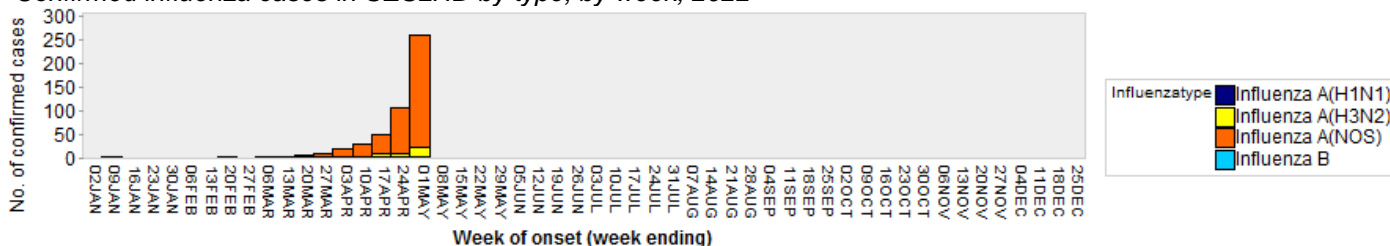
Confirmed influenza cases in SESLHD, 2022 compared to previous 5 years



450 notifications of influenza were received in April. They were all influenza A.

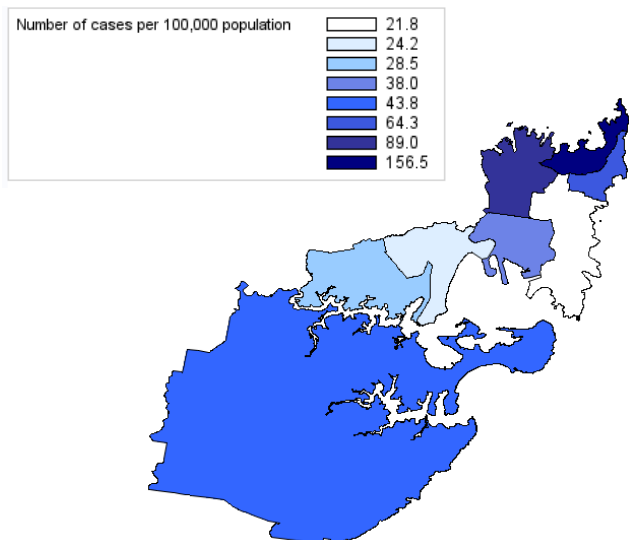
Influenza A Total	Influenza A			Influenza A&B	Influenza B	Influenza not typed	Total
	Not Subtyped	A(H3N2)	A(H1N1)				
450 (100%)	403	37	10	0	0 (0%)	0	450

- Confirmed influenza cases in SESLHD by type, by week, 2022

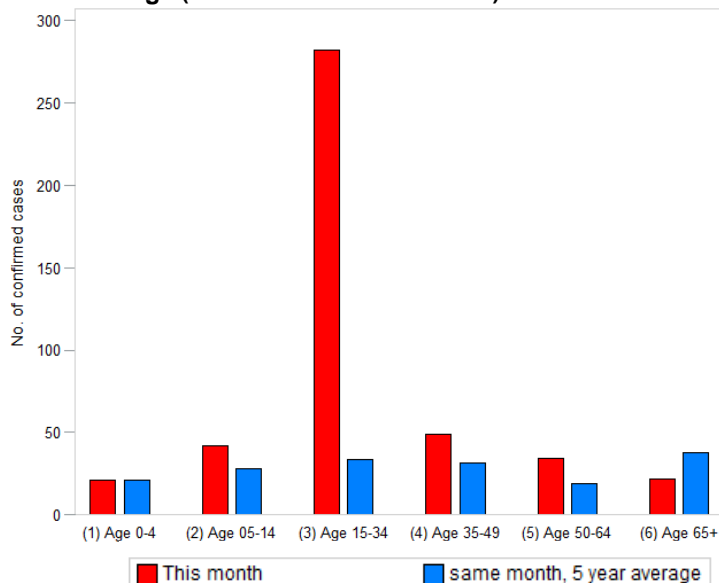


- The number of notifications is above average for all age groups except for 65 years and over. The 25-29 year age group is the most affected.
- Woollahra and Sydney LGAs have the highest rate of notifications with 156.5 and 89.0 cases per 100,000 residents respectively. Note: that for Sydney LGA the rate has been adjusted using 33% of the Sydney LGA total population

Rate of confirmed cases (per 100,000) by local government area



Number of confirmed cases compared to 5 year average (does not include 2020 or 2021)



1.2 Aged Care Facility outbreaks reported to Public Health Unit

Outbreak type	2022			2021 YTD	2020 YTD
	People affected*	Number this month	Year to date		
Influenza	NA	0	0	0	1
Influenza-like illness	24 (7.0%)	3	4	1	16

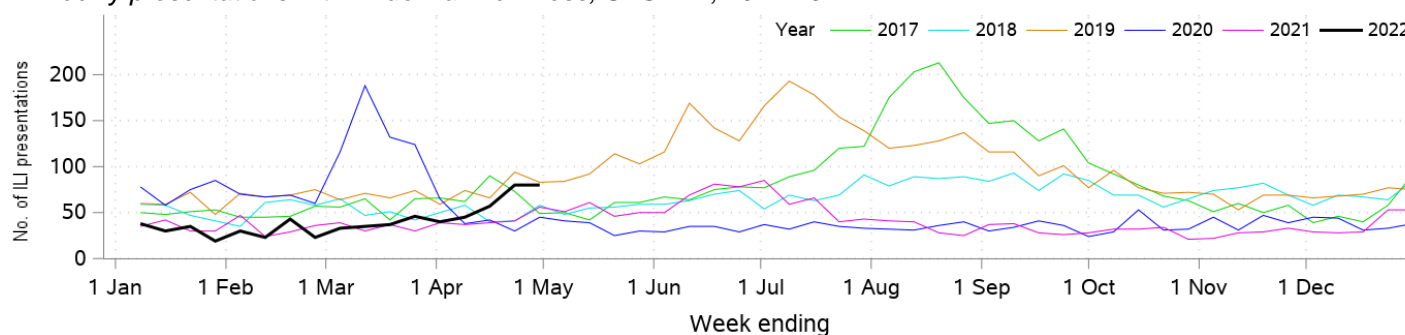
*Includes residents and staff, based on reports received by the Public Health Unit.

1.3 Presentations to Emergency Departments located within SESLHD – PHREDSS*

- For the period 4 April 2022 to 1 May 2022

Diagnosis / Category	Trend since last month	Compared to usual range for time of year	Comment
Influenza-like illness (ILI) presentations	Increased	Lower	4.1x higher than last month
Pneumonia presentations	Increased	Usual	1.4x higher than last month
Pneumonia and ILI admissions	Increased	Usual	1.2x higher than last month
Pneumonia and ILI critical care admissions	Steady	Lower	
Bronchiolitis presentations	Increased	Usual	1.6x higher than last month
Respiratory, fever and unspecified infection presentations	Steady	Lower	

Weekly presentations with influenza-like illness, SESLHD, 2017-2022



*PHREDSS = Public Health Rapid Emergency Disease Surveillance System