

Sexually Transmissible Infections in South Eastern Sydney Local Health District

End of Year Report, 2022

Summary

Chlamydia

- 5122 notifications received in 2022, a 2.4% increase from 2021
- 69% are male, mean age 32 years, 44% are aged 20-29 years, and 40% reside in Sydney LGA.
- Of the 4603 single infection sites reported, 3022 (66%) were genitourinary, 1428 (31%) anorectal, 144 (3%) throat, and 9 (0.2%) eye. The proportion of anorectal chlamydia infections was similar to 2021.

Gonorrhoea

- 3020 notifications received in 2022, a 39% increase from 2021
- The proportion of notifications in women increased from 11% (238) in 2021 to 13% (401) in 2022
- 87% are male, mean age 35 years, 38% are aged 30-39 years, and 51% reside in Sydney LGA.
- Of the 2313 single infection sites, 789 (34%) were throat, 620 (27%) anorectal, 902 (39%) genitourinary tract, and 2 eye (0.1%) infections.

Infectious Syphilis

- 693 notifications were received in 2022, a 12% increase from 2021.
- 96% are male, mean age 38 years, 43% are aged 30-39 years, and 60% reside in the Sydney LGA.
- 27 women were diagnosed with infectious syphilis in 2022 compared to 23 in 2021. Seven are from Randwick, 7 from Sydney, 3 from Sutherland Shire, 3 from Georges River, 3 from Botany Bay and 1 from Waverley LGA
- 3 notifications were received for transgender people in 2022
- 10 cases (1.4%) identified as Aboriginal and/or Torres Strait Islander
- Sex of partner for males: 426 (65%) male, 54 (8%) female, 21 (3%) male and female, and 157 (24%) unknown
- Sex work: 130 (19%) males and 2 (0.3%) females were current sex workers.
- Diagnosing practices are provided in table 4 (page 12). In 2022, Sydney Sexual Health Clinic diagnosed 24% of syphilis notifications. Holdsworth House and Taylor Square Private Clinic diagnosed respectively 7.7% and 7.4% of infectious syphilis in South Eastern Sydney residents.

Other Infections

- 25 cases of mpox were notified in 2022, all in males, mean age 36 years, associated with a global mpox outbreak amongst men who have sex with men. 84% reside in Sydney LGA.
- 11 locally acquired cases of shigellosis were notified in 2022, similar to 2021(10) and 85% lower than in 2020 (74).
- 3 LGV notifications were received in 2022, the same as in 2021 and 70% lower than in 2020 (10).

CONTACT US

Public Health Unit
Locked Mail Bag 88 Randwick NSW 2031
(Tel) 61 2 9382 8333 (Fax) 61 2 9382 8334

 @SESPUBLICHEALTH

 http://www.seslhd.health.nsw.gov.au/Public_Health/

Sexually Transmissible Infections in South Eastern Sydney Local Health District End of Year Report, 2022

Contents

Chlamydia	3
Gonorrhoea	6
Infectious Syphilis.....	9
Mpox.....	14
Lymphogranuloma Venereum (LGV)	15
Shigellosis	16

Figures

Figure 1: Chlamydia notifications in South Eastern Sydney residents by month and gender 2008- 2022.....	3
Figure 2: Chlamydia notifications in South Eastern Sydney residents by age group and quarter, 2014- 2022	3
Figure 3: Chlamydia notifications in South Eastern Sydney residents by site and sex 2014- 2022	4
Figure 4: Chlamydia notifications in South Eastern Sydney residents by LGA and quarter, 2014- 2022	4
Figure 5: Gonorrhoea notifications in South Eastern Sydney residents by month and gender 2008- 2022	6
Figure 6: Gonorrhoea notifications in South Eastern Sydney residents by age group and quarter, 2014- 2022.....	6
Figure 7: Gonorrhoea notifications in South Eastern Sydney residents by LGA and quarter, 2014 - 2022.....	7
Figure 8: Gonorrhoea notifications in South Eastern Sydney residents by site and sex 2014- 2022	7
Figure 9: Infectious syphilis notifications in South Eastern Sydney residents by month and gender 2008- 2022	9
Figure 10: Infectious syphilis notifications in South Eastern Sydney residents by age group and quarter, 2014- 2022	9
Figure 11: Infectious syphilis notifications in South Eastern Sydney residents by LGA and quarter, 2014- 2022	10
Figure 12: Mpox notifications in South Eastern Sydney residents in 2022	14
Figure 13: LGV notifications in South Eastern Sydney residents 2008 - 2022	15
Figure 14: Locally acquired (in NSW) shigellosis notifications in SESLHD residents by sex 2008- 2022.....	16

Notes:

This report is prepared by the South Eastern Sydney Local Health District Public Health Unit using the NSW Health Notifiable Conditions Information Management System (NCIMS) accessed through SAPHaRI. LGAs are the 2016 LGAs.

Appropriate acknowledgement of the Public Health Unit should accompany any approved use.

All dates reported are based on the calculated date of onset.

Data may be incomplete, especially for infectious syphilis cases where a longer time frame occurs from notification date to the date of classification of infectious cases.

The data within this report may be subject to revision and should not be published or distributed further without approval of the Director, Public Health, SESLHD.

Data extracted 28 February 2023.

Sexually Transmissible Infections in South Eastern Sydney Local Health District
End of Year Report, 2022

Chlamydia

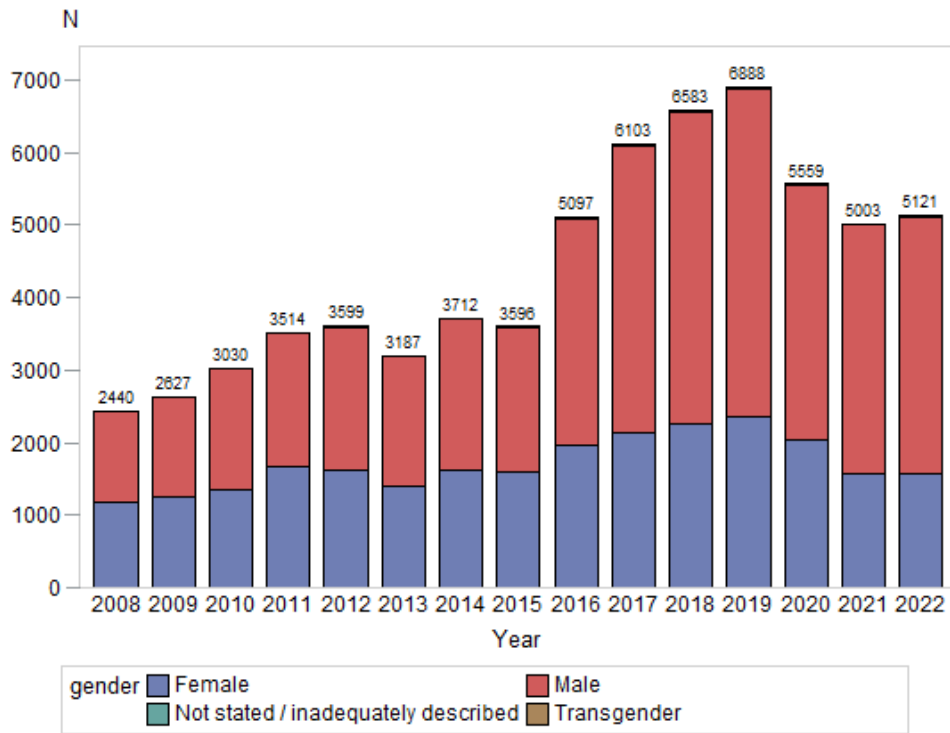


Figure 1: Chlamydia notifications in South Eastern Sydney residents by month and gender 2008- 2022

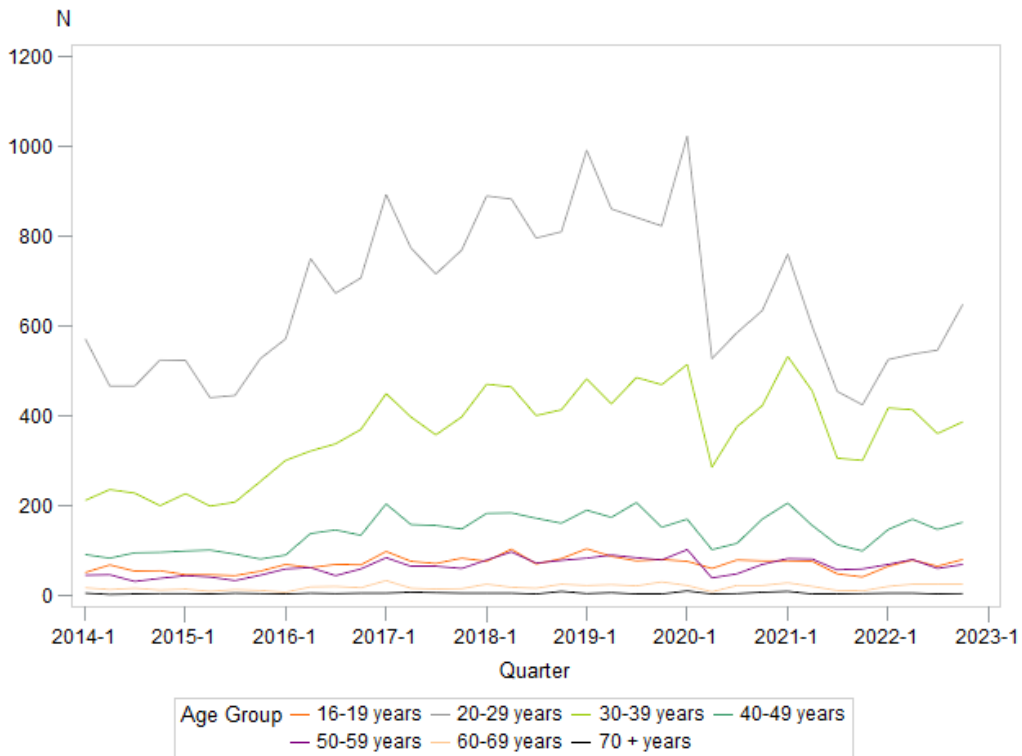


Figure 2: Chlamydia notifications in South Eastern Sydney residents by age group and quarter, 2014- 2022

Sexually Transmissible Infections in South Eastern Sydney Local Health District End of Year Report, 2022

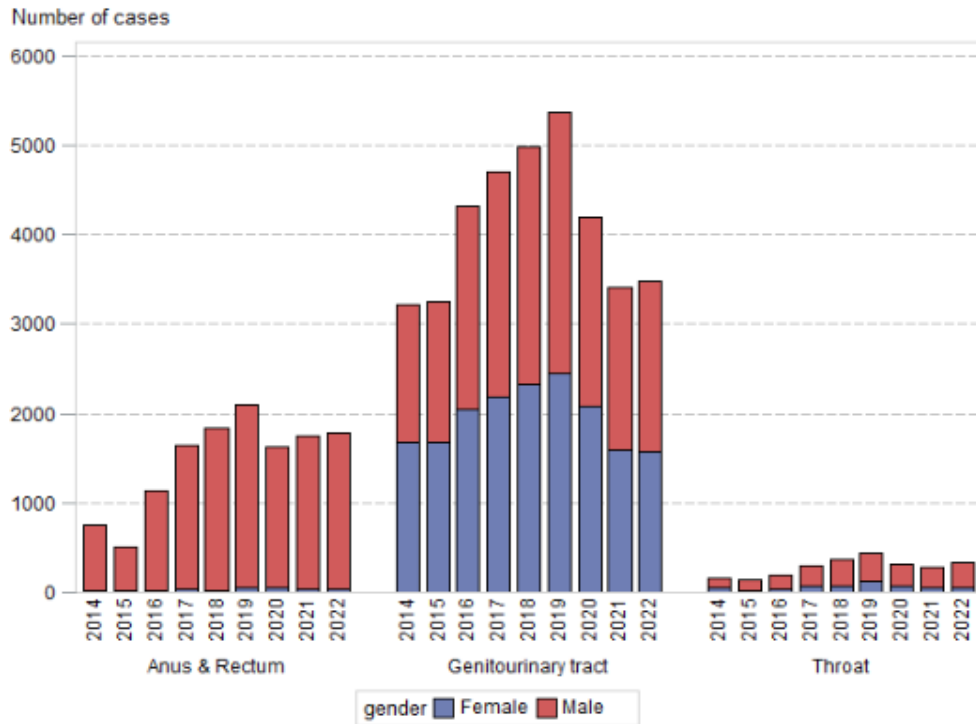


Figure 3: Chlamydia notifications in South Eastern Sydney residents by site and sex 2014- 2022

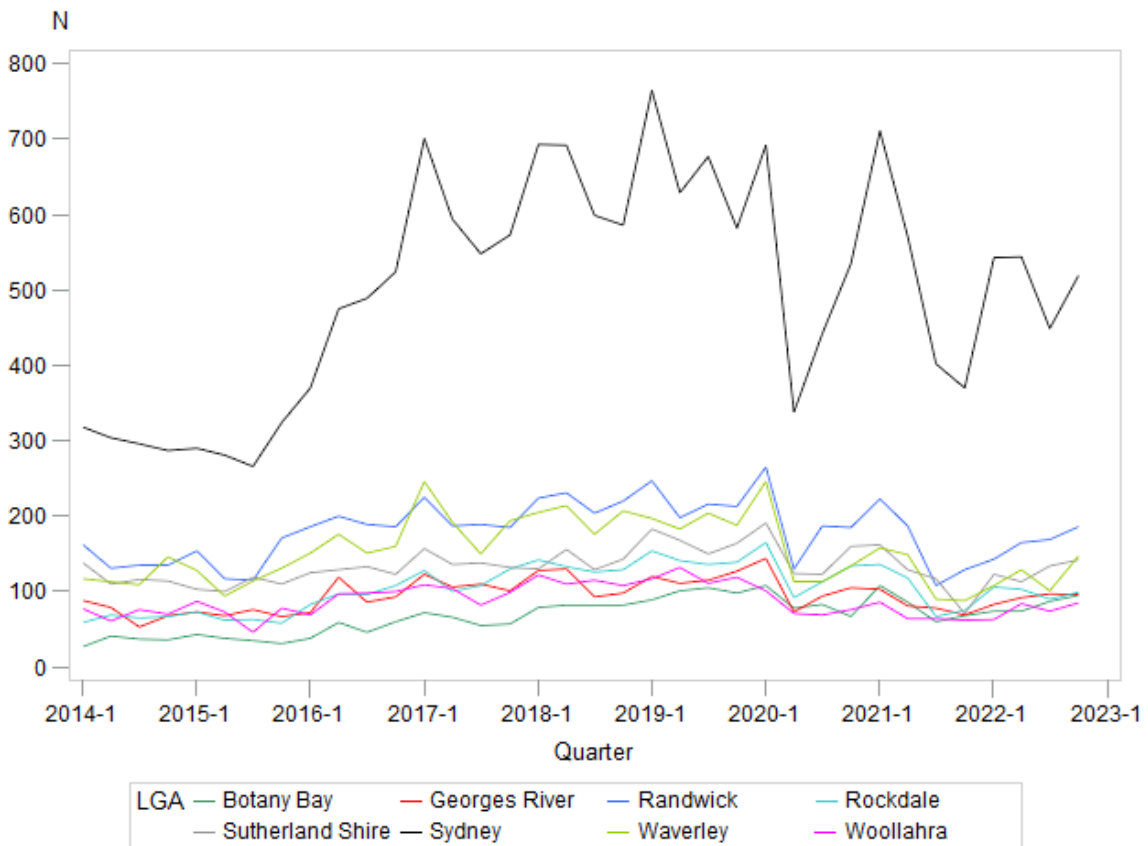


Figure 4: Chlamydia notifications in South Eastern Sydney residents by LGA and quarter, 2014- 2022

Sexually Transmissible Infections in South Eastern Sydney Local Health District End of Year Report, 2022

Table 1: Chlamydia notifications in South Eastern Sydney residents 2016-2022

	Year													
	2016		2017		2018		2019		2020		2021		2022	
	N	%	N	%	N	%	N	%	N	%	N	%	N	%
GENDER														
Female	1964	38.5	2144	35.1	2270	34.5	2362	34.3	2044	36.8	1576	31.5	15	30.6
Male	3122	61.3	3938	64.5	4286	65.1	4504	65.4	3498	62.9	3419	68.3	35	69.3
Not stated	7	0.1	10	0.2	15	0.2	15	0.2	8	0.1	4	0.1	2	0.0
Transgender	4	0.1	11	0.2	12	0.2	7	0.1	9	0.2	4	0.1	6	0.1
LGA														
Botany Bay	204	4.0	250	4.1	325	4.9	394	5.7	337	6.1	324	6.5	33	6.4
Georges River	371	7.3	440	7.2	451	6.9	473	6.9	417	7.5	333	6.7	36	7.2
Randwick	762	15.0	786	12.9	884	13.4	875	12.7	767	13.8	650	13.0	66	12.9
Rockdale	385	7.6	466	7.6	531	8.1	570	8.3	506	9.1	397	7.9	39	7.8
Sutherland Shire	513	10.1	563	9.2	560	8.5	666	9.7	601	10.8	480	9.6	51	10.0
Sydney	1859	36.5	2417	39.6	2570	39.0	2655	38.6	2007	36.1	2054	41.1	20	40.1
Unincorporated	.	.	4	0.1	1	0.0	1	0.0	.	.	2	0.0	1	0.0
Waverley	639	12.5	783	12.8	805	12.2	774	11.2	607	10.9	486	9.7	48	9.5
Woollahra	364	7.1	394	6.5	456	6.9	480	7.0	317	5.7	277	5.5	30	6.0
AGE GROUP														
0-15 years	9	0.2	2	0.0	14	0.2	8	0.1	8	0.1	11	0.2	4	0.1
16-19 years	264	5.2	324	5.3	327	5.0	344	5.0	288	5.2	238	4.8	28	5.6
20-29 years	2701	53.0	3152	51.7	3379	51.3	3518	51.1	2769	49.8	2237	44.7	22	44.1
30-39 years	1327	26.0	1600	26.2	1747	26.5	1862	27.0	1596	28.7	1592	31.8	15	30.8
40-49 years	504	9.9	662	10.9	696	10.6	719	10.4	554	10.0	570	11.4	62	12.2
50-59 years	220	4.3	270	4.4	322	4.9	332	4.8	254	4.6	275	5.5	27	5.4
60-69 years	59	1.2	74	1.2	80	1.2	93	1.4	70	1.3	65	1.3	91	1.8
70+ years	13	0.3	19	0.3	18	0.3	12	0.2	20	0.4	15	0.3	13	0.3
Total (ALL)	5097	100.0	6103	100.0	6583	100.0	6888	100.0	5559	100.0	5003	100.0	51	100.

Sexually Transmissible Infections in South Eastern Sydney Local Health District
End of Year Report, 2022

Gonorrhoea

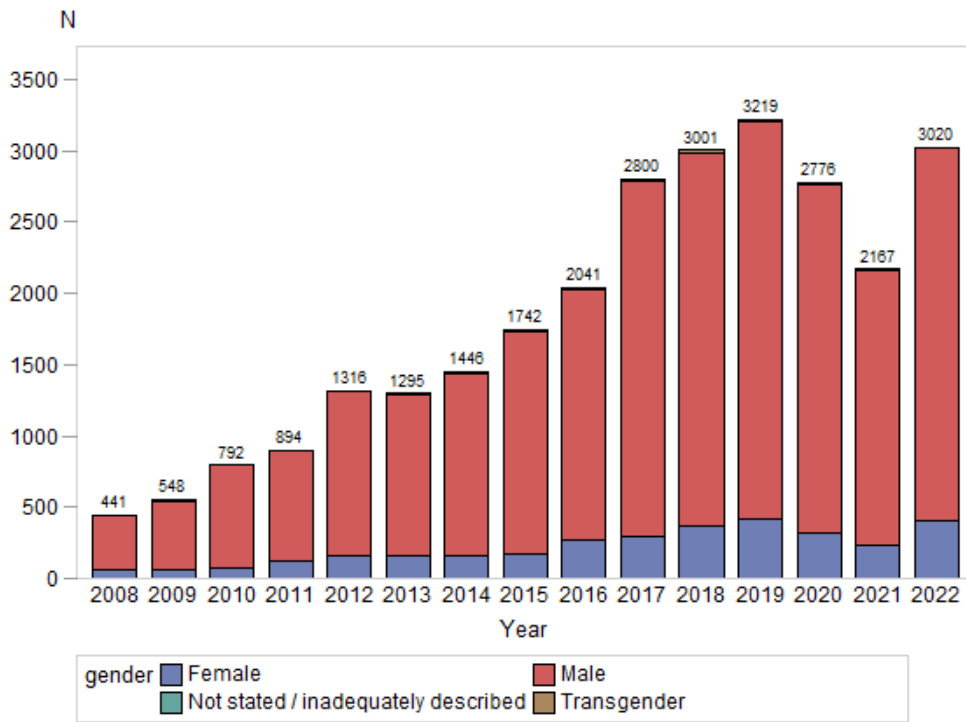


Figure 5: Gonorrhoea notifications in South Eastern Sydney residents by month and gender 2008- 2022

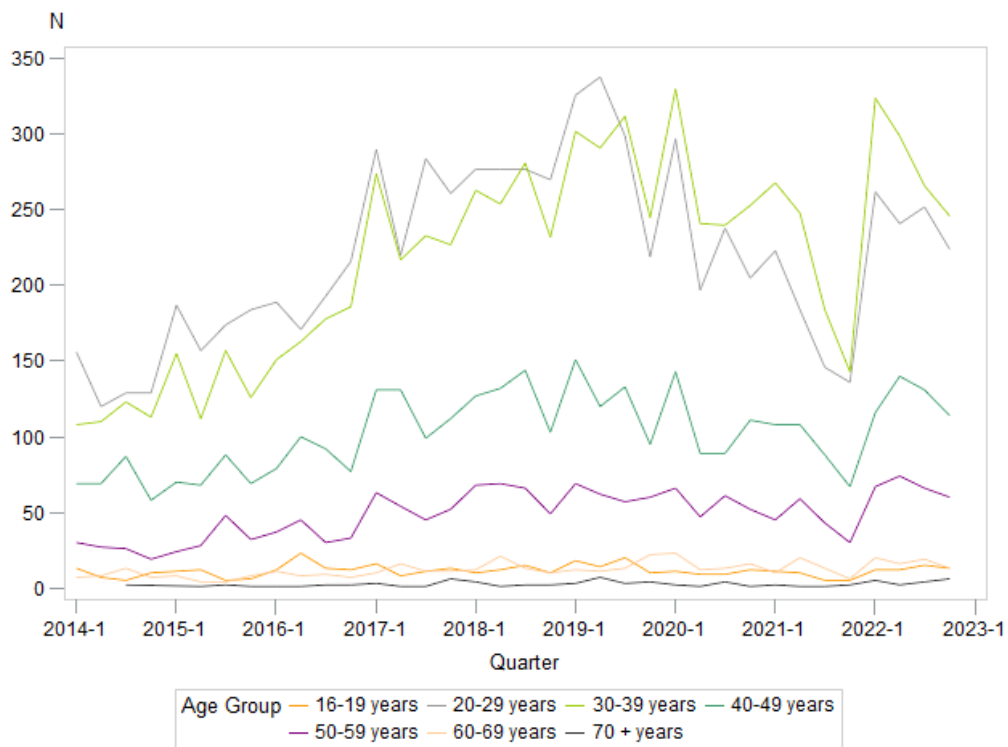


Figure 6: Gonorrhoea notifications in South Eastern Sydney residents by age group and quarter, 2014- 2022

**Sexually Transmissible Infections in South Eastern Sydney Local Health District
End of Year Report, 2022**

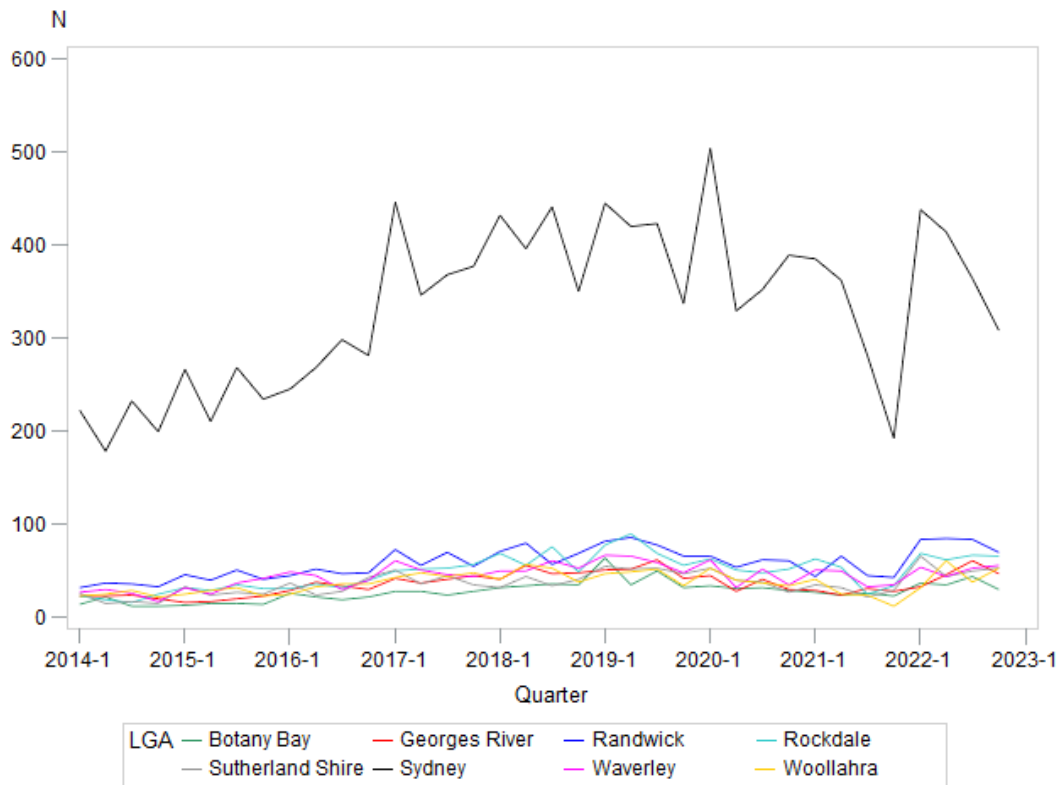


Figure 7: Gonorrhoea notifications in South Eastern Sydney residents by LGA and quarter, 2014 - 2022

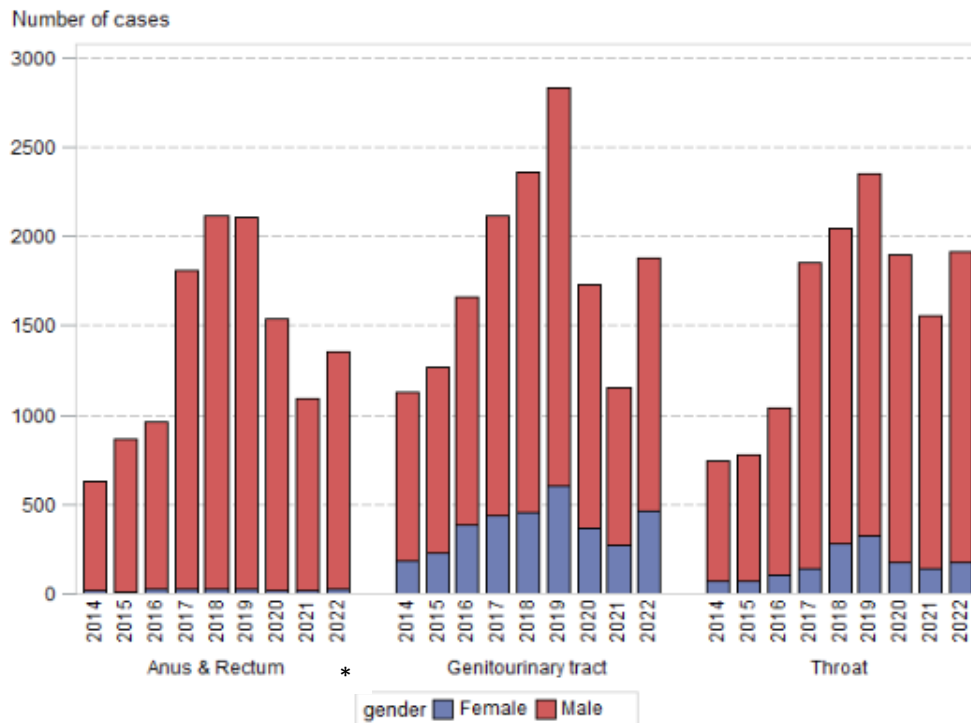


Figure 8: Gonorrhoea notifications in South Eastern Sydney residents by site and sex 2014- 2022

**Sexually Transmissible Infections in South Eastern Sydney Local Health District
End of Year Report, 2022**

Table 2: Gonorrhoea notifications in SESLHD 2016 –2022

	Year													
	2016		2017		2018		2019		2020		2021		2022	
	N	%	N	%	N	%	N	%	N	%	N	%	N	%
GENDER														
Female	268	13.1	300	10.7	364	12.1	423	13.1	323	11.6	238	11.0	401	13.3
Male	1759	86.2	2484	88.7	2612	87.0	2777	86.3	2436	87.8	1921	88.7	2612	86.5
Not stated	8	0.4	6	0.2	7	0.2	8	0.3	10	0.4	3	0.1	.	.
Transgender	6	0.29	10	0.4	18	0.6	11	0.3	7	0.3	5	0.2	7	0.2
LGA														
Botany Bay	85	4.2	104	3.7	133	4.4	177	5.5	122	4.4	96	4.4	142	4.7
Georges River	127	6.2	161	5.7	188	6.3	203	6.3	140	5.0	108	5.0	183	6.1
Randwick	188	9.2	250	8.9	273	9.1	308	9.6	239	8.6	194	8.9	319	10.6
Rockdale	135	6.6	208	7.4	246	8.2	289	9.0	210	7.6	172	7.9	260	8.6
Sutherland Shire	128	6.3	163	5.8	147	4.9	203	6.3	154	5.5	114	5.3	209	6.9
Sydney	1092	53.5	1537	54.9	1619	53.9	1625	50.5	1575	56.7	1220	56.3	1524	50.5
Waverley	160	7.8	198	7.1	210	7.0	236	7.3	177	6.4	165	7.6	203	6.7
Woollahra	126	6.2	179	6.4	185	6.2	178	5.5	160	5.8	98	4.5	180	6.0
AGE GROUP														
0-15 years	3	0.1	4	0.1	1	0.0	1	0.0
16-19 years	60	2.9	48	1.7	47	1.6	62	1.9	41	1.5	31	1.4	52	1.7
20-29 years	769	37.7	1055	37.7	1101	36.7	1181	36.7	938	33.8	689	31.8	979	32.4
30-39 years	678	33.2	951	34.0	1030	34.3	1151	35.7	1064	38.3	843	38.9	1135	37.6
40-49 years	348	17.0	473	16.9	506	16.9	499	15.5	432	15.6	371	17.1	501	16.6
50-59 years	145	7.1	214	7.6	252	8.4	248	7.7	226	8.1	177	8.2	267	8.8
60-69 years	35	1.7	48	1.7	56	1.9	58	1.8	64	2.3	49	2.3	68	2.3
70 + years	6	0.3	11	0.4	9	0.3	17	0.5	8	0.3	6	0.3	17	0.6
Total (ALL)	2041	100.0	2800	100.0	3001	100.0	3219	100.0	2777	100.0	2167	100.0	3020	100.00

Sexually Transmissible Infections in South Eastern Sydney Local Health District
End of Year Report, 2022

Infectious Syphilis

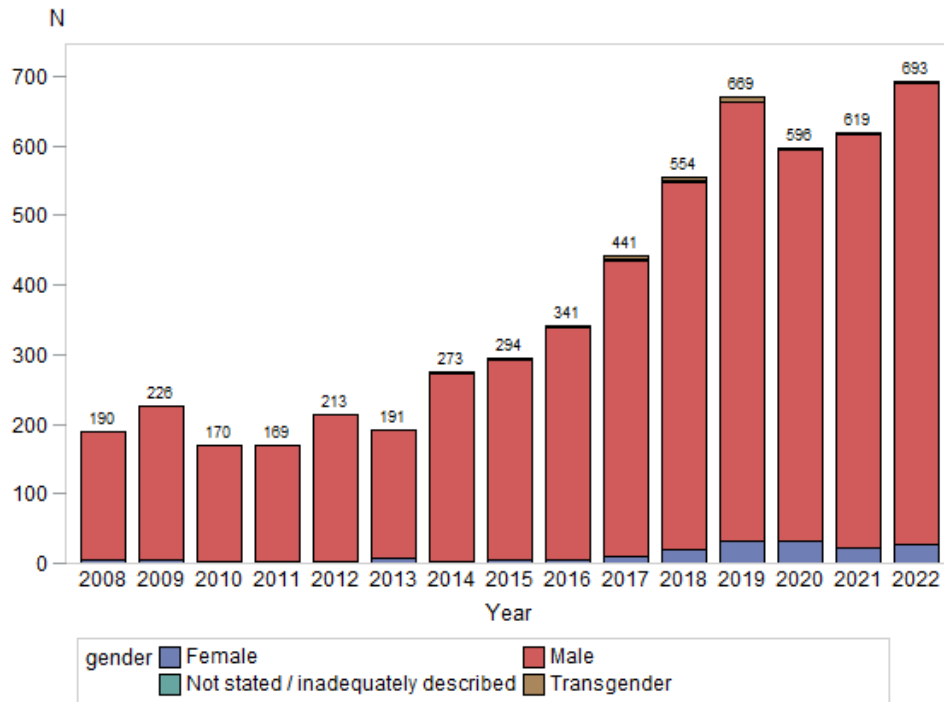


Figure 9: Infectious syphilis notifications in South Eastern Sydney residents by month and gender 2008- 2022

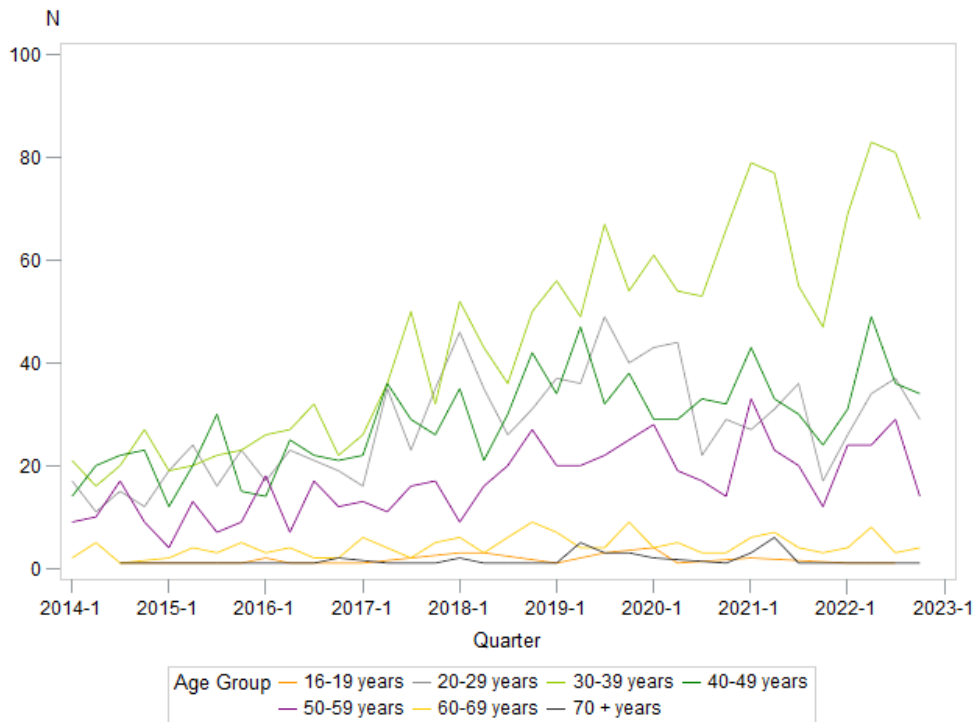


Figure 10: Infectious syphilis notifications in South Eastern Sydney residents by age group and quarter, 2014- 2022

Sexually Transmissible Infections in South Eastern Sydney Local Health District End of Year Report, 2022

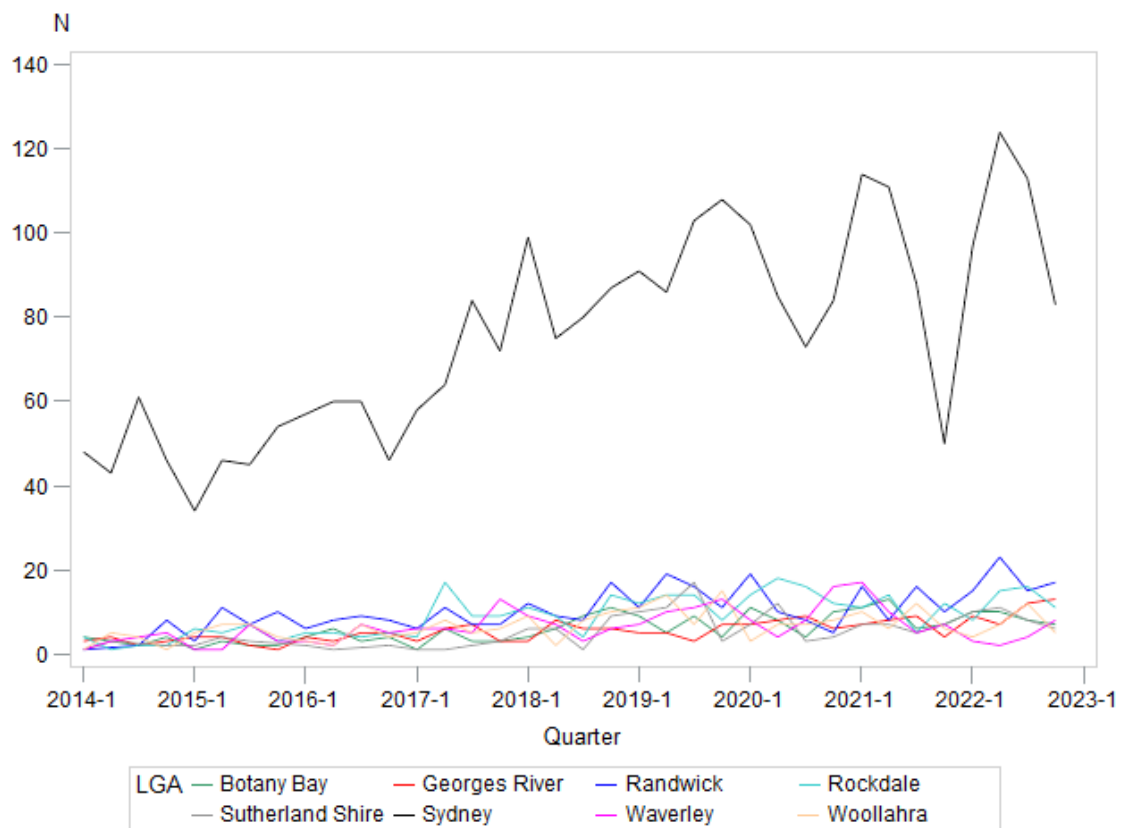


Figure 11: Infectious syphilis notifications in South Eastern Sydney residents by LGA and quarter, 2014- 2022

Sexually Transmissible Infections in South Eastern Sydney Local Health District End of Year Report, 2022

Table 3: Infectious syphilis notifications in SESLHD 2016- 2022

	Year													
	2016		2017		2018		2019		2020		2021		2022	
	N	%	N	%	N	%	N	%	N	%	N	%	N	%
GENDER														
Female	6	1.8	9	2.0	20	3.6	33	4.9	31	5.2	23	3.7	27	3.9
Male	333	97.7	425	96.4	527	95.1	629	94.0	562	94.3	594	96.0	663	95.7
Not stated	1	0.3	4	0.9	2	0.4	1	0.2	1	0.2
Transgender	1	0.3	3	0.7	5	0.9	6	0.9	2	0.3	2	0.3	3	0.4
INDIGENOUS STATUS														
Aboriginal	2	0.6	7	1.6	9	1.6	12	1.8	9	1.5	15	2.4	9	1.3
Both Aboriginal and Torres Strait Islander	1	0.2	.	.	1	0.2	.	.	1	0.1
Not Aboriginal or Torres Strait Islander	297	87.1	389	88.2	502	90.6	600	89.7	529	88.8	540	87.2	608	87.7
Torres Strait Islander	.	.	2	0.5	1	0.2
Unknown	42	12.3	43	9.8	42	7.6	57	8.5	56	9.4	64	10.3	75	10.8
LGA														
Botany Bay	13	3.8	13	3.0	30	5.4	27	4.0	33	5.5	37	6.0	35	5.1
Georges River	17	5.0	19	4.3	23	4.2	20	3.0	30	5.0	28	4.5	41	5.9
Randwick	31	9.1	31	7.0	46	8.3	57	8.5	42	7.1	50	8.1	70	10.1
Rockdale	19	5.6	39	8.8	38	6.9	48	7.2	60	10.1	42	6.8	50	7.2
Sutherland Shire	5	1.5	7	1.6	22	4.0	41	6.1	26	4.4	26	4.2	35	5.1
Sydney	223	65.4	278	63.0	341	61.6	388	58.0	344	57.7	363	58.6	417	60.2
Waverley	17	5.0	30	6.8	25	4.5	41	6.1	36	6.0	39	6.3	17	2.5
Woollahra	16	4.7	24	5.4	29	5.2	47	7.0	25	4.2	34	5.5	28	4.0
Age Group														
0-15 years	1	0.2
16-19 years	4	1.2	3	0.7	6	1.1	6	0.9	5	0.8	2	0.3	2	0.3
20-29 years	80	23.5	109	24.7	138	24.9	162	24.2	138	23.2	111	17.9	126	18.2
30-39 years	107	31.4	144	32.7	181	32.7	226	33.8	234	39.3	258	41.7	301	43.4
40-49 years	82	24.1	113	25.6	128	23.1	151	22.6	123	20.6	130	21.0	150	21.7
50-59 years	54	15.8	57	12.9	72	13.0	87	13.0	78	13.1	88	14.2	91	13.1
60-69 years	11	3.2	13	3.0	24	4.3	24	3.6	15	2.5	20	3.2	19	2.7
70 + years	3	0.9	2	0.5	5	0.9	12	1.8	3	0.5	10	1.6	4	0.6
Total (ALL)	341	100.0	441	100.0	554	100.0	669	100.0	596	100.0	619	100.0	693	100.0

**Sexually Transmissible Infections in South Eastern Sydney Local Health District
End of Year Report, 2022**

Table 4: Diagnosing practice for infectious syphilis, 2022.

Practice name	N	%
Sydney Sexual Health Clinic	162	23.6
Holdsworth House Medical Practice	53	7.7
Taylor Square Private Clinic	51	7.4
Albion St Centre	31	4.5
Oxford Village Medical Centre	27	3.9
Hyde Park Medical Centre	24	3.5
Kirketon Road Centre	24	3.5
East Sydney Doctors	23	3.3
Darlinghurst Medical Centre	22	3.2
St George Hospital Sexual Health Clinic	17	2.5
St Vincent's Hospital	11	1.6
Crown St Medical Centre	10	1.5
Bondi Junction 7 Day Medical Centre	8	1.2
Botany Medical Centre	7	1.0
MyHealth Potts Point	6	0.9
Myhealth Potts Point	6	0.9
Royal Prince Alfred Hospital Sexual Health Clinic	6	0.9
Miranda Medical Centre	5	0.7
Prince Of Wales Hospital	5	0.7
RPAH Sexual Health Clinic	5	0.7
Shop 18 Oxford Village Medical Centre	5	0.7
St George Hospital Emergency Department	5	0.7
St Vincents Hospital Emergency Department	5	0.7
Sydney CBD Medical Centre	5	0.7
Sydney Hospital Emergency Department	5	0.7
World Square CBD Medical Centre	5	0.7
Fountain Medical Practice	4	0.6
Macleay Street Medical Practice	4	0.6
Prince Of Wales Hospital, Infectious Diseases Departme	4	0.6
GP (Other)*s	132	19.2
No practice name	6	0.9
Missing	4	0.6
TOTAL	687	100.0

*Any general practice with <3 infectious syphilis notifications were grouped as GP (Other)

Sexually Transmissible Infections in South Eastern Sydney Local Health District End of Year Report, 2022

Table 5: Additional data from syphilis enhanced surveillance, 2022

	Gender						Total (ALL) N
	Female		Male		Transgender		
	N	%	N	%	N	%	
Stage							
Primary	9	1.3	195	28.4	2	0.3	206
Secondary	9	1.3	196	28.5	.	.	205
Early Latent	7	1.0	131	19.1	.	.	138
Unknown	1	0.2	136	19.8	1	0.2	138
Symptoms							
Yes	14	2.0	261	38.0	2	0.3	277
No	10	1.5	270	39.3	1	0.2	281
Unknown/Not specified	2	0.3	127	18.5			129
Chancere							
Yes	3	0.4	86	12.5	1	0.2	90
Skin rash							
Yes	6	0.9	94	13.7	.	.	100
Lymphadenopathy							
Yes	1	0.2	9	1.3	.	.	10
Place of disease acquisition							
Acquired in Australia outside NSW	.	.	6	0.9	.	.	6
Acquired in NSW	15	2.2	278	40.5	2	0.3	295
Acquired outside Australia	1	0.2	27	3.9	.	.	28
Unknown/Not specified	10	1.46	347	50.51	1	0.15	358
PrEP							
Yes	1	0.2	166	24.2	.	.	167
No	23	3.4	330	48.0	2	0.3	355
Unknown/Not specified	2	0.3	162	23.58	1	0.15	165
Sex of partner							
Person(s) of the opposite sex only	18	2.6	54	7.9	1	0.2	73
Person(s) of the same sex only	1	0.2	426	62.0	2	0.3	429
Persons of both sexes	1	0.2	21	3.1	.	.	22
Sexual exposure unknown/Not specified	6	0.88	157	22.85	0	0	163
Is person a current sex worker?							
Yes	2	0.3	13	1.9	2	0.3	17
No	15	2.2	404	58.8	1	0.2	420
Unknown/Not specified	9	1.31	241	35.08	0	0	250
Total (ALL)	26	3.8	658	95.8	3	0.4	687

Note: this data extracted directly from NCIMS without additional data cleaning done by SAPHaRI. The data are incomplete due to the delay between the notification and the return of the enhanced questionnaire from doctors.

**Sexually Transmissible Infections in South Eastern Sydney Local Health District
End of Year Report, 2022**

Mpox

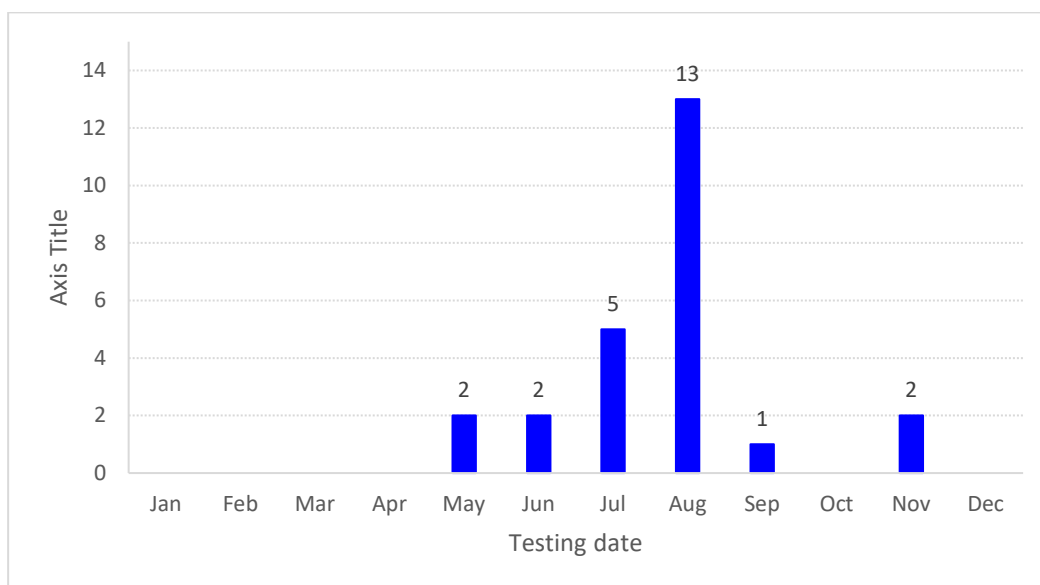


Figure 12: Mpox notifications in South Eastern Sydney residents in 2022

Table 6: Mpox notifications in SESLHD in 2022

	Year	
	2022	
	N	%
GENDER		
Male	25	100.0
LGA		
Randwick	3	12.0
Rockdale	1	4.0
Sydney	21	84.0
AGE GROUP		
20-29 years	4	16.0
30-39 years	15	60.0
40-49 years	5	20.0
50-59 years	1	4.0
Total (ALL)	25	100.0

Sexually Transmissible Infections in South Eastern Sydney Local Health District
End of Year Report, 2022

Lymphogranuloma Venereum (LGV)

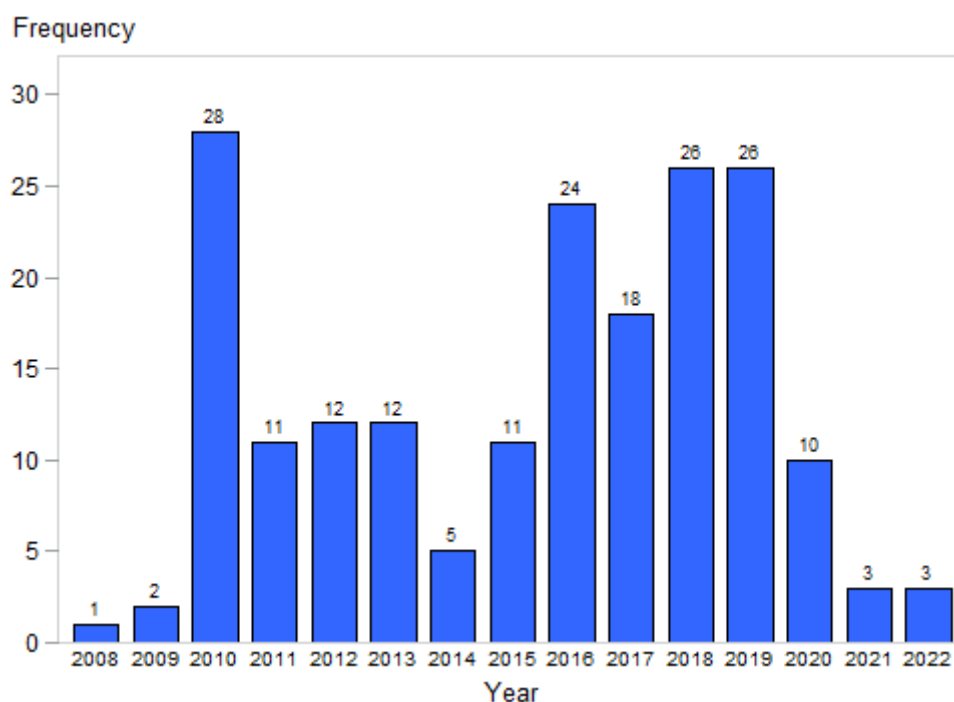


Figure 13: LGV notifications in South Eastern Sydney residents 2008 - 2022

Table 7: LGV notifications in SESLHD 2016- 2022

	Year													
	2016		2017		2018		2019		2020		2021		2022	
	N	%	N	%	N	%	N	%	N	%	N	%	N	%
GENDER														
Male	24	100.0	18	100.0	26	100.0	26	100.0	10	100.0	3	100.0	3	100.0
LGA														
Botany Bay	1	4.2	1	5.6	3	11.5	1	33.3	.	.
Georges River	2	7.7	1	3.8	1	33.3
Randwick	1	4.2	2	11.1	1	3.8	3	11.5	1	10.0
Rockdale	1	10.0
Sutherland Shire	2	7.7	1	3.8
Sydney	19	79.2	15	83.3	14	53.8	18	69.2	7	70.0	2	66.7	2	66.7
Waverley	1	4.2	.	.	2	7.7	1	3.8
Woollahra	2	8.3	.	.	2	7.7	2	7.7	1	10.0
Age Group														
20-29 years	6	25.0	6	33.3	5	19.2	6	23.1	2	20.0	.	.	1	100.0
30-39 years	9	37.5	7	38.9	12	46.1	10	38.5	6	60.0	2	66.7	2	66.7
40-49 years	4	16.7	3	16.7	6	23.1	7	26.9	1	10.0	1	33.3	.	.
50-59 years	5	20.8	2	11.1	1	3.8	3	11.5	1	10.0
60-69 years	1	3.8
70+ years	1	3.8
Total (ALL)	24	100.0	18	100.0	26	100.0	26	100.0	10	100.0	3	100.0	3	100.0

Sexually Transmissible Infections in South Eastern Sydney Local Health District
End of Year Report, 2022

Shigellosis

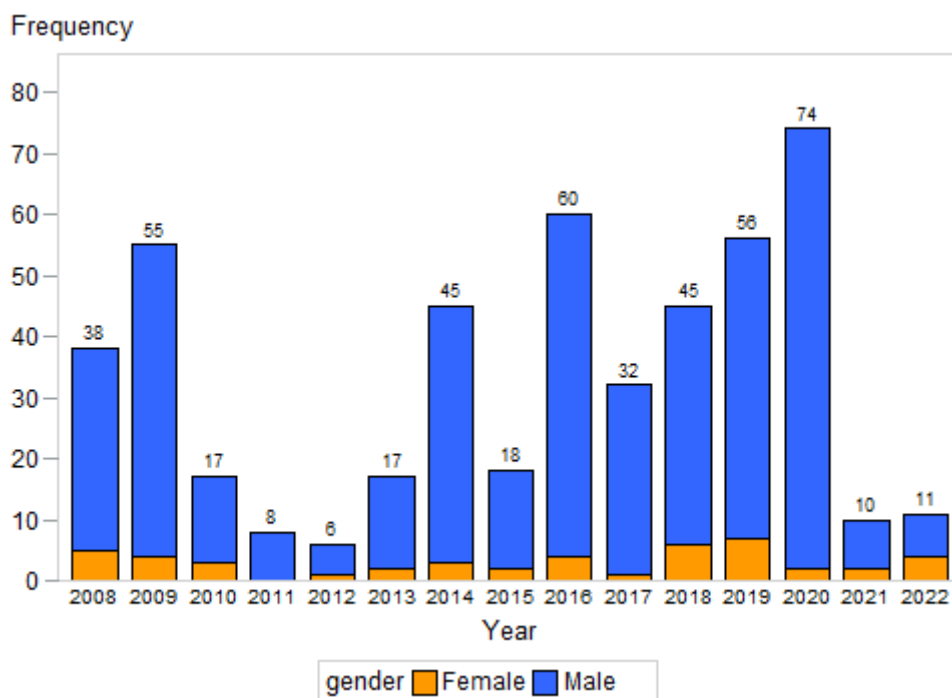


Figure 14: Locally acquired (in NSW) shigellosis notifications in SESLHD residents by sex 2008- 2022

Table 8: Locally acquired shigellosis notifications in SESLHD residents 2016- 2022

	Year													
	2016		2017		2018		2019		2020		2021		2022	
	N	%	N	%	N	%	N	%	N	%	N	%	N	%
GENDER														
Female	4	6.7	1	3.1	6	13.3	7	12.5	2	2.7	2	20.0	4	36.4
Male	56	93.3	31	96.9	39	86.7	49	87.5	72	97.3	8	80.0	7	63.6
LGA														
Botany Bay	3	5.0	1	3.1	3	6.7	2	3.6	1	1.4
Georges River	4	7.1	3	4.1	1	10.0	1	9.1
Randwick	7	11.7	2	6.3	8	17.8	5	8.9	5	6.8	1	10.0	.	.
Rockdale	4	6.7	2	6.3	3	6.7	3	5.4	4	5.4	1	10.0	.	.
Sutherland Shire	1	1.7	.	.	1	2.2	5	8.9	6	8.1	1	10.0	1	9.1
Sydney	40	66.7	23	71.9	25	55.6	29	51.8	47	63.5	4	40.0	6	54.6
Waverley	3	5.0	4	12.5	4	8.9	2	3.6	5	6.8	1	10.0	2	18.2
Woollahra	2	3.3	.	.	1	2.2	6	10.7	3	4.1	1	10.0	1	9.1
AGE GROUP														
0-15 years	.	.	1	3.1	.	.	1	1.8	2	18.2
16-19 years	1	2.2
20-29 years	15	25.0	4	12.5	4	8.9	10	17.9	22	29.7	3	30.0	3	27.3
30-39 years	19	31.7	10	31.3	16	35.6	21	37.5	19	25.7	3	30.0	2	18.2
40-49 years	17	28.3	9	28.1	7	15.6	16	28.6	21	28.4	1	10.0	2	18.2
50-59 years	8	13.3	6	18.8	10	22.2	3	5.4	6	8.1	1	10.0	2	18.2
60-69 years	1	1.7	2	6.3	5	11.1	2	3.6	5	6.8	2	20.0	.	.
70+ years	2	4.4	3	5.4	1	1.4
TOTAL	60	100.0	32	100.0	45	100.0	56	100.0	74	100.0	10	100.0	11	100.0